

Jackson A#1
SW SW NW
36-1-19W

3-3-10 1750'
3-4-10 2350'
3-5-10 3138
3-6-10 3490' DST#1
3-7-10 3711'
3-8-10 3634' Running
prod. csg.

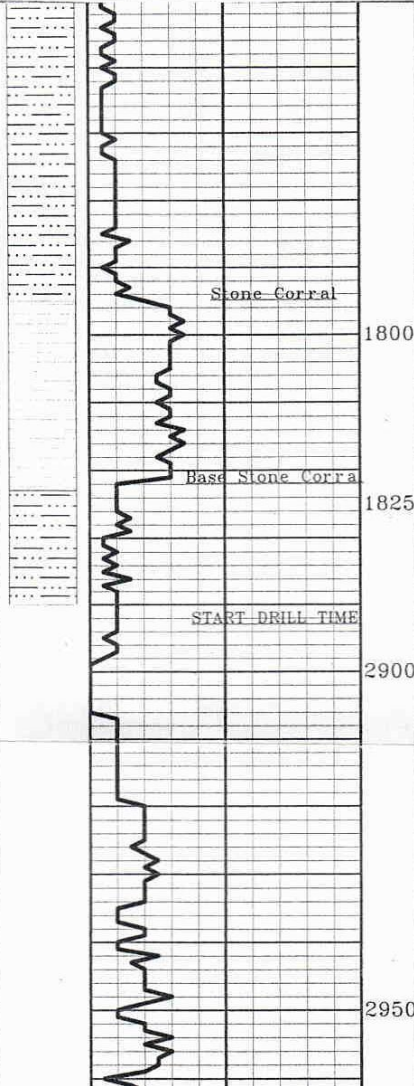
REMARKS AND RECOMMENDATIONS

Production casing was set to further test this well.

Respectfully submitted,

Robert Petersen

0 Drill Time 10 Min.



STONE CORRAL 1795 to 1823

1800

Base Stone Corral

1825

START DRILL TIME

2900

SH; Gray, silty + LS; Cream, fine crystalline, foss (30)

LS; Cream, fine crystalline, ool (60)

SH; Red/gray (60)

LS; Gray, fine crystalline, foss + SH; Red/gray (90)

2950

