



Scale 1:240 (5"=100') Imperial
Measured Depth Log

Well Name: PROSSER # 1-16
 Location: Sec 16 17s 12w, Barton, Kansas
 License Number: 15-009-25433-0000
 Spud Date: JUNE 19,2010
 Surface Coordinates: 700' Fnl & 1540' Fel
 Region: Wildcat
 Drilling Completed: JUNE 24, 2010

Bottom Hole Coordinates:
 Ground Elevation (ft): 1864' K.B. Elevation (ft): 1874'
 Logged Interval (ft): 1700 To: 3470' Total Depth (ft): 3470'
 Formation: Lansing, Arbuckle
 Type of Drilling Fluid:

Printed by WellSight Log Viewer from WellSight Systems 1-800-447-1534 www.WellSight.com

OPERATOR

Company: Samuel Gary Jr, & Assoc.
 Address: 1515 Wynkoop, Ste.# 700
 Denver, Colo. 80202
 Geo: Clayton Camozzi

GEOLOGIST

Name: Tim Hedrick
 Company: Earth Tech OGL, Inc.
 Address: PO Box 683
 Hooker, Okla . 73945
 Off. 888-543-8378 Cell: 620-655-2050

DST information

DST # 1 3256 TO 3270' 10 60 10 60
 IF- NO Blow ISI-NO Blow, FF- NO Blow, FSI- NO Blow
 IH- 1568, FH- 1544, IF- 16 TO 19, FF- 20 TO 19, ISI-1071. FSI-1009,
 RECOV.- 5' DRILL MUD W. GOOD SHOW OF OIL. BHT 107 DEG.

ROCK TYPES

Anhy	Gyp	Shgy	Sandylms
Bent	Igne	Sltst	Shale
Brec	Lmst	Ss	Sltstn
Cht	Meta	Till	Shlysits
Clyst	Mrlst	Carb sh	Sltysth
Coal	Salt	Dol	Lms
Congl	Shale	Dtd	
Dol	Shcol	Gry sh	

ACCESSORIES

MINERAL	Salt	Fossil	Clystn
Anhy	Sandy	Gastro	Dol
Arggrn	Silt	Oolite	Grysh
Arg	Sil	Ostra	Gryslt
Bent	Sulphur	Pelec	Lms
Bit	Tuff	Pellet	Sandylms
Brecfrag	Chlorite	Pisolite	Sh
Calc	Dol	Plant	Sltstn
Carb	Sand	Strom	
Chtdk	Sltly	Fuss	
Chtlt		Oomold	
Dol	FOSSIL	STRINGER	TEXTURE
Feldspar	Algae	Anhy	Boundst
Ferrpel	Amph	Arg	Chalky
Ferr	Belm	Bent	Cryxln
Glau	Bioclst	Coal	Earthy
Gyp	Brach	Dol	Finexln
Hvymin	Bryozoa	Ls	Grainst
Kaol	Cephal	Mrst	Lithogr
Marl	Coral	Sltstrg	Microxln
Minxl	Crin	Ssstrg	Mudst
Nodule	Echin	Carbsh	Packst
Phos	Fish		Wackest
Pyr	Foram		

OTHER SYMBOLS

POROSITY TYPE

- E Earthy
- B Fenest
- F Fracture
- X Inter
- M Moldic
- O Organic
- P Pinpoint
- V Vuggy

SORTING

- W Well
- M Moderate
- P Poor

ROUNDING

- R Rounded
- S Subrnd
- a Subang

- A Angular

OIL SHOWS

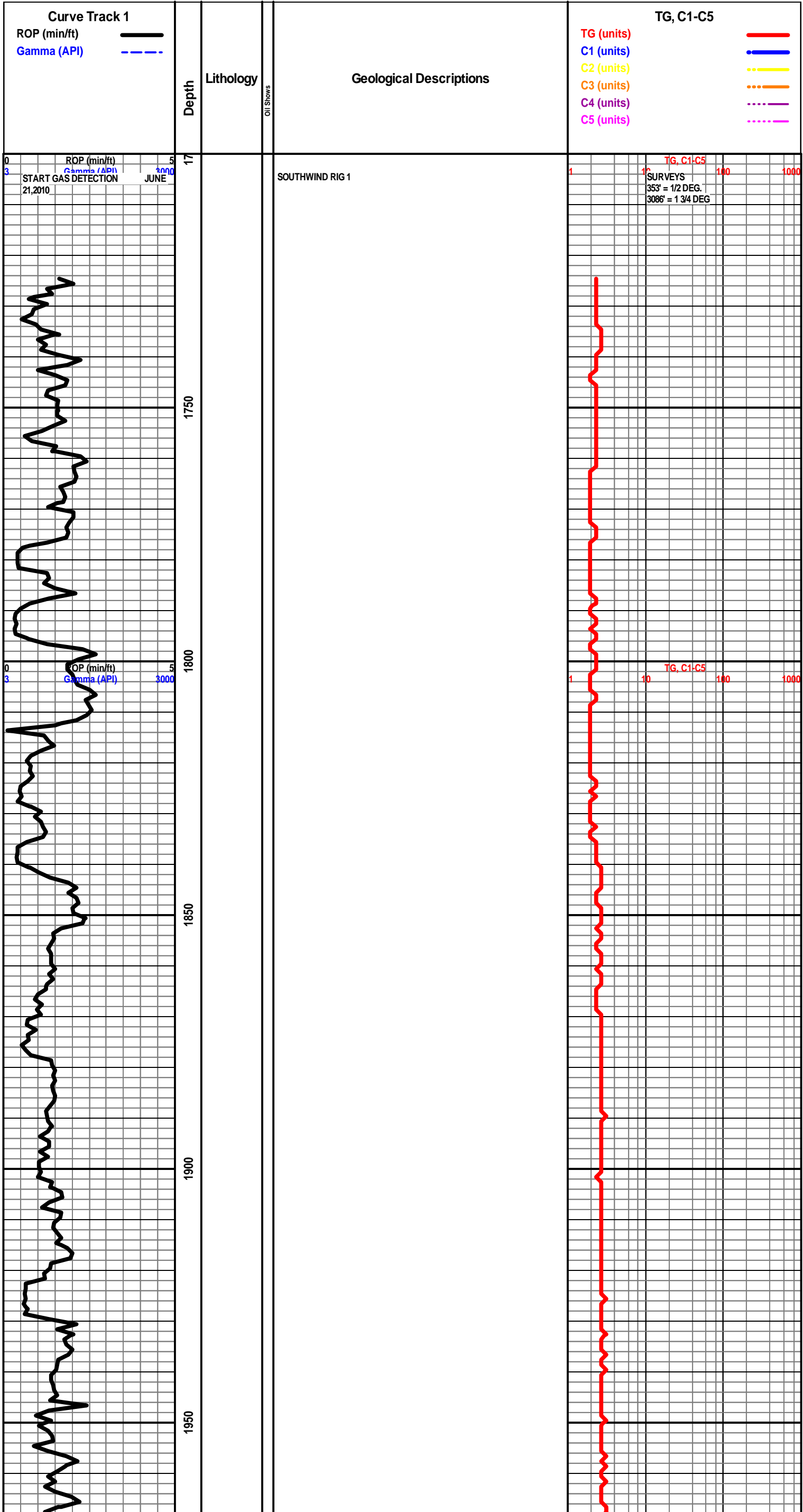
- E Even
- S Spotted
- Q Ques
- D Dead
- G Gas show

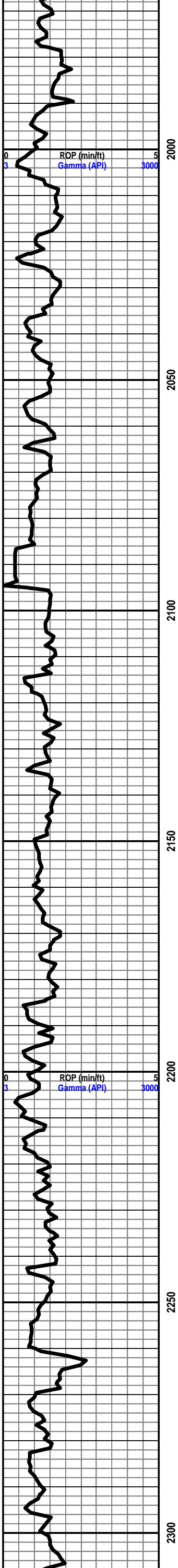
INTERVALS

- C Core
- Dst Dst
- Dst Dst

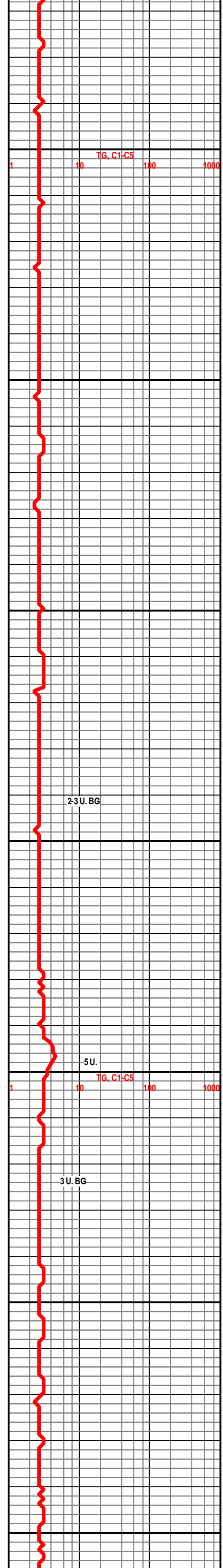
EVENTS

- Rft Rft
- S Sidewall





2000
2050
2100
2150
2200
2250
2300



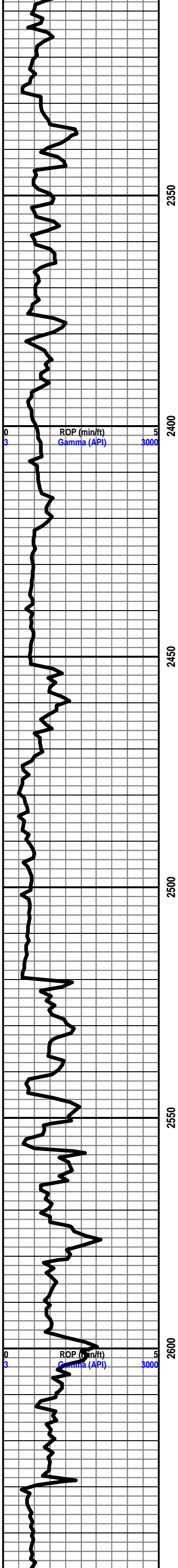
1 10 100 1000

1 10 100 1000

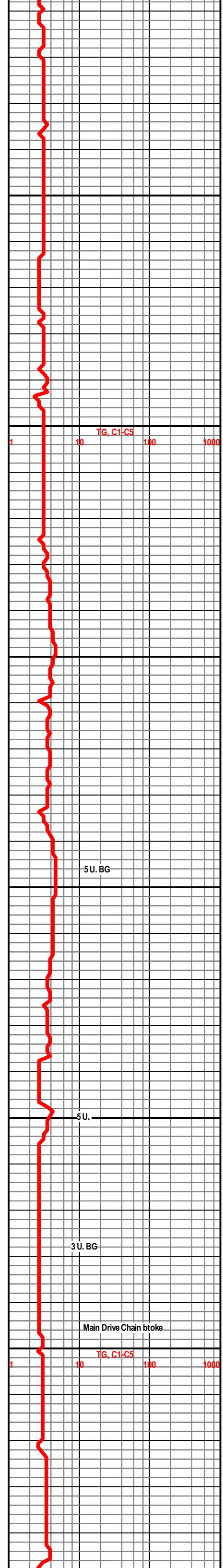
2-3 U. BG

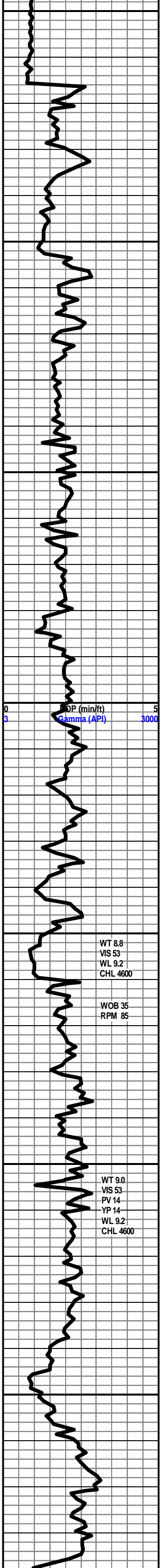
5 U.
TG, C1-C5

3 U. BG

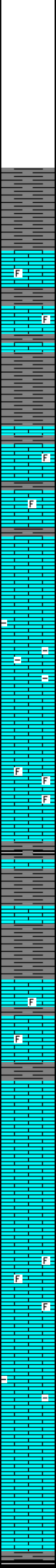


BASE ROOT SH. 2451' - 577'





2650
2700
2750
2800
2850
2900
2950



SH- LT TO MD GY- FRM BLKY IP TO V/ SFT SLTY, HVY TR V/F-GRN QURTZ IMBD IP

TOPEKA 2704' - 830'

LS- CRM LT TN TN LT GY- HD DNS TO BRITT, MD-F-XLN, RE-XLN MTRX IP, FOSS FRGS IMBD IP, TR IMBD DK GY SH, NO FLO, NO VIS POR, NO VIS SHOW

SH- LT TO MD GY- FRM BLKY MICA, V/ CALC TO LMY

LS- CRM LT TN TN- HD DNS F-V/F-XLN, SLI TR FOSS FRGS IMBD IP, NO FLO, NO VIS POR, NO VIS SHOW

LS- CRM LT TN - HD DNS TO BRITT, MD-XLN RE-XLN MTRX CALC XLS IMBD IP, TR FOSS, NO FLO, NO VIS POR, NO VIS SHOW

LS- CRM LT TN - HD DNTO BRITT -V/ SUCRO MTRX, V/ AREN TO SNDY IP, ABDT IMBD V/F-GRN QURTZ IP, NO FLO, NO VIS POR, NO VIS SHOW

LS- OFF WHT CRM BFF- HD IP TO V/ SFT, V/ SUCRO MTRX V/ S-CHLKY TO CHLKY IP, TR LMNTD DK GY SH IP, TO ABDT SFT WHT CHLK, NO FLO, NO VIS POR, NO VIS SHOW OR CUT

LS- CRM LT TN TN - HD DNS, MD-V/F-XLN, RE-XLN MTRX, V/ FOSS IP, TR IMBD LT GY SH IP, TR SMLL CALC XLS IMBD IP, NO FLO, NO VIS POR, NO VIS SHOW

SH- MD TO DK GY- FRM BLKY SMTH TXT, BLK SFT CARB IP

LS- CRM LT TN- HD DNS MD-F-XLN, RE-XLN MTRX TO TT SUCRO MTRX IP, WTR IMBD LT GY SH IP, NO FLO, NO VIS POR, NO VIS SHOW

LECOMPTON 2860' - 986'

LS- CRM BFF- HD DNS BRITT IP, MD-XLN, RE-XLN MTRX IP, SCAT IMBD FOSS THRU, NO FLO, NO VIS POR, NO VIS SHOW

LS- CRM LT TN TN- HD DNS TO BRITT, MD-XLN TO TT SUCRO MTRX, MOTT IP, ABDT IMBD SMLL CALC XLS IP, HVY TR IMBD LT TO DK GY SH IP, NO FLO, NO VIS POR, NO VIS SHOW

LS- OFF WHT CRM LT TN- HD DNS TO TR BRITT, MD-V/F-XLN, RE-XLN IP, TR SMLL CALC XLS IMBD IP, SLI TR WHT CHLK, NO FLO, NO VIS POR, NO VIS SHOW

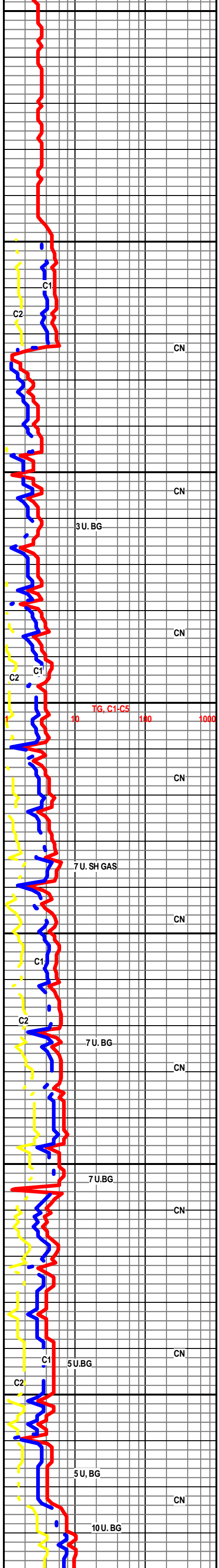
LS- CRM BFF LT TN- HD DNS, V/ TT SUCRO MTRX, ABDT EMBED FOSS FRGS THRU, TR IMBD SH IP, NO FLO, NO VIS POR, NO VIS SHOW

LS- OFF WHT CRM- HD TO MD HD - V/ SUCRO S-CHLKY TO CHLKY MTRX, TR IMBD DISS SH IP, SLI TR CHLK, NO FLO, NO VIS POR, NO VIS SHOW

LS- OFF WHT CRM BFF- HD DNS TR BRITT, F-V/F-XLN TR S-SUCRO IP, NO FLO, NO VIS POR, NO VIS SHOW

HEEBNER 2985' - 1111'

SH- BLK SFT CARB



CN

CN

CN

CN

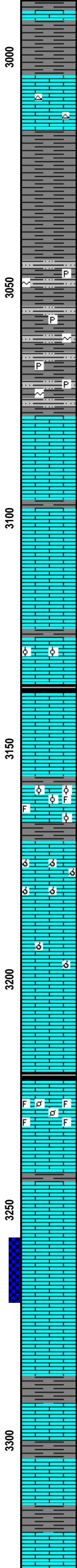
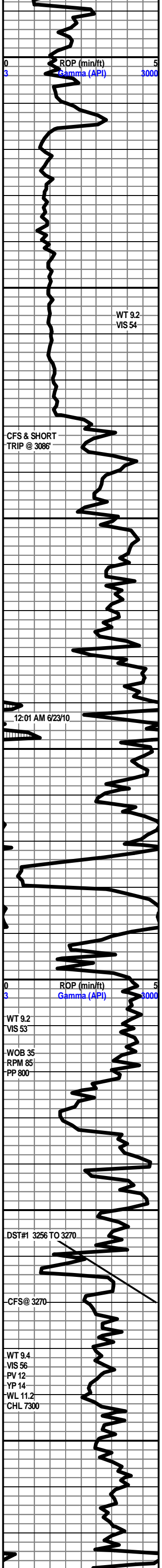
CN

CN

CN

CN

CN



SH- LT TO MD GY- FRM BLKY SMTH TXT

LS- OFF WHT TO WHT- V/ TT SUCRO MTRX TR S-CHLKY TO TR ABDT SFT WHT CHLK, TR WHT CHRT, NO FLO, NO VIS POR, NO VIS SHOW

DOUGLAS 3015' - 1141'

SH- LT TO MD GY- V/ SFT GMMY TXT TR SLTY

SH- LT GY GY - FRM IP TO V/ SFT GMMY. SLI TR SLTY

SLTST- HD TT LT GY FRSTY-V/V/F-GRN QURTZ W. LMNTD AND FINELY DISS SH THRU, HVY TR IMBD DISS PYR, TR IMBD GLAUC, NO FLO, NO VIS POR, NO VIS SHOW

BROWN LIME 3078' - 1204'

LS- TN BRN- HD DNS F-V/F-XLN, SLI RE-XLN IP, TR LMNTD SMLL CALC XLS IP, SLI TR SUCRO IP, NO FLO TO TR DLL YEL MIN FLO IP, NO VIS POR, NO VIS SHOW

LANSING 3099' - 1225'

LS- CRM BFF- HD DNS, SLI TR BRITT, F-V/F-XLN, SLI S-SUCRO IP, HVY TR SCAT PR MICROVUGS SCAT IP, NO FLO, NO VIS SHOW OR CUT

LS- CRM LT TN TN LT BRN(STN IN 20%) HD DNS, SLI TR BRITT, MD-F-XLN, RE-XLN MTRX IP, SLI S-SUCRO IP, ABDT IMBD V/ SMLL OOL IP, TR SMLL CALC XLS IMBD IP, DLL YEL GLD FLO IP TO BRIT YEL GLD SPTT FLO IN 20%, V/ PR VIS INTEROOL POR IP, V/ PR MICRO PP POR IP, NO ODOR, LT FLSH CUT TO PR TO FR SLO STRM CUT IN 20%,

LANSING "X" 3136' - 1262'

LS- CRM BFF- HD DNS, F-V/F-XLN, SLI RE-XLN IP, NO FLO, NO VIS POR, NO VIS SHOW

LS- CRM LT N LT GY- HD DNS TR BRITT, MD-F-XLN RE-XLN MTRX, V. MICRO OOL, LMNTD LT GY SH THRU, TR FOSS FRGS IP, NO FLO, NO VIS POR, NO VIS SHOW

LS- OFF WHT CRM- HD DNS TO BRITT, MD-F-XLN, RE-XLN MTRX, V/ OOLMLD, TR FOSS IP, SLI TR WHT SFT CHLK IP, LT DLL YEL FLO IP, PR TO FR TO TR EXCEL OOLMLD POR, NO VIS SHOW

LS- LT TN TN-HD DNS, V/F-CRYPTO-XLN TO S-LITHO, NO INCLUSIONS, NO FLO, NO VIS POR, NO VIS SHOW

LS- CRM BFF- HD DNS TO V/ BRITT, MD-F-XLN, RE-XLN MTRX, OOLMLD AND PHNTM OOLMLD, LT DLL YEL MIN FLO, PR OOLMLD POR THRU, NO VIS CUT OR SHOW

LS- CRM LT TN- HD DNS F-XLN TO TT SUCRO MTRX, NO FLO, NO VIS POR, NO VIS SHOW OR CUT

LANSING "Z" 3219' - 1345'

SH- BLK SFT CARB

LS- CRM LT TN TN-HD DNS TO V/ BRITT, MD-F-XLN, V/ RE-XLN MTRX, V/ FOSS, ABDT IMBD PELT, TR LMNTD GY SH IP, ABDT CALC XLS IMBD THRU INTERFOSS, NO FLO, NO VIS POR, NO VIS CUT OR SHOW

LS- CRM BFF- HD DNS TO BRITT, F-XLN TO SUCRO SLI S-CHLKY IP, NO FLO, NO VIS POR, NO VIS SHOW

LS-OFF WHT WHT- HD V/ BRITT, V/ CRS SUCRO MTRX, ABDT IMBD CALC XLS THRU, TR MICRO OOL IP, TN STN IN 50%, GD VIS INTER-XLN POR, FR VIS MICRO VUG POR, LT FLSH TO FR SLO STRM CUT

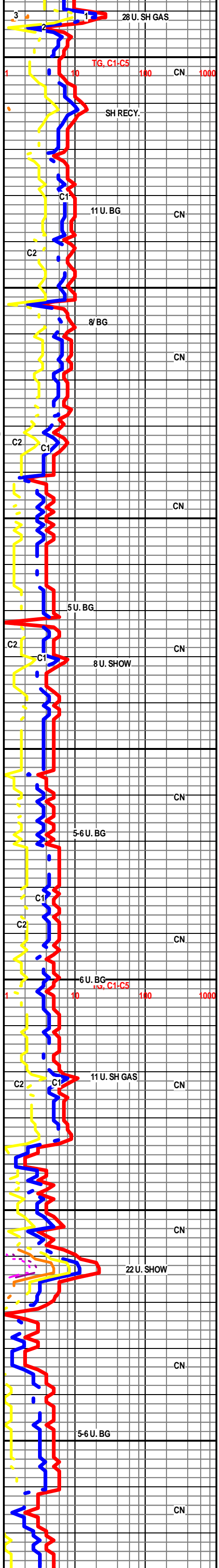
STARK 3286' - 1412'

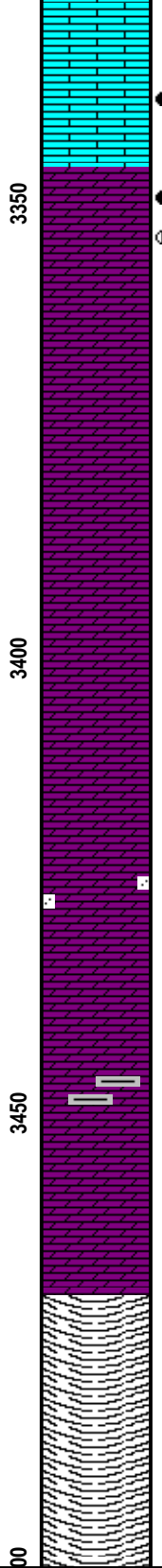
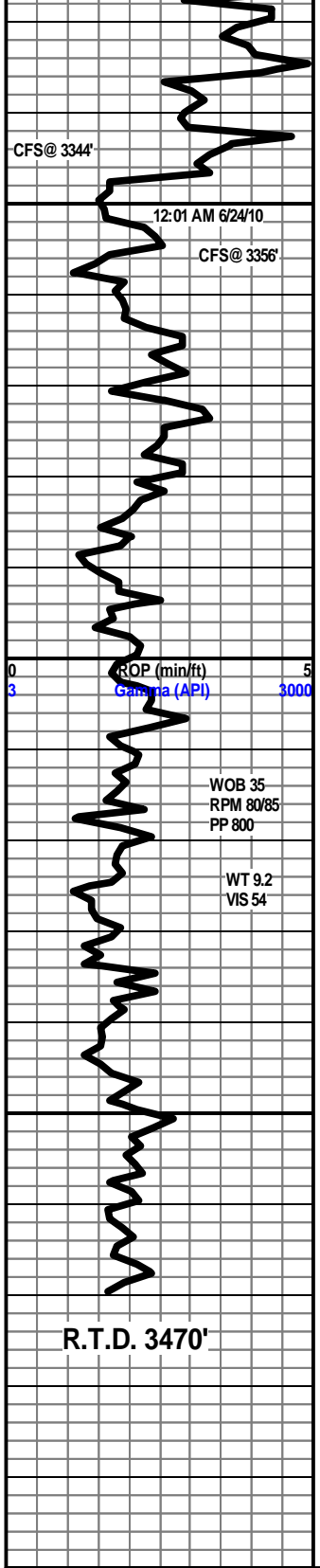
SH- LT GY TO LT GRN- FRM BLKY, SMTH TXT

LS- CRM OFF WHT- HD TO MD HD- V/ SUCRO S-CHLKY TO CHLKY MTRX, NO FLO, NO VIS POR, NO VIS SHOW

SH- RED- FRM BLKY V/ GRNY TXT

LS- LT TN TN- HD DNS V/F- CRYPTO-XLN SLI S-SUCRO IP, NO FLO, NO VIS POR, NO VIS SHOW





3336 TO 3341- LS- LT TN TN DK TN (DUE TO STN IN 80%), HD DNS TR BRITT, MD-F-XLN RE-XLN MTRX, IMBD ANG LM GRNS SCAT THRU, V/ FOSS, SLI TR SUCRO IP, NO ODOR WET, GOOD OIL ODOR DRY, DLL YEL GLD FLO THRU, BRIT YEL GLD FLO IN 20%, V/ PR VIS INTER-XLN POR, V/ PR MICRO PP POR IP TO NO POR, GD FLUSH CUT TO V/ GD SLO STRM CUT, TN LCH ON DISH.

ARBUCKLE 3347' - 1473'

DOLO- OFF WHT CRM LT BRN DUE TO STN(STN IN 60-70%) HD DNS TO V/ BRITT, V/ SUCRO MTRX, ABTD IMBD SMLL ANG DOLO GRNS THRU, , TN BRN OIL STN IN 70%, WHT SFT CHLK IMBD IN 20%, TR IMBD GRN CLAY IN 10%,DLL YEL GLD FLO THRU, BRIT YEL GLD FLO IN 50%, FR TO GD VIS INTER-XLN POR, TR FR MICRO VUG POR, GO STRNG OIL ODOR DRY, FR OIL ODOR WET, GD FLSH CUT TO GD SLO STRM CUT IN 50% TO NO CUT IN 50%

3357 TO 3375 DOLO- WHT -HD DNS -F-XLN TO V/ SUCRO IP, ABTD IMBD SMLL DOLO GRNS SCAT THRU, HVY TR CHLK, DLL YEL MIN FLO THRU, PR VIS INTER-XLN POR IP TO MOSTLY NO POR, NO VIS SHOW

3380 TO 3403 DOLO- OFF WHT CRM- HD BRITT, V/ CS SUCRO MTRX, ABTD SMLL IMBD WHT DOLO GRNS THRU, HVT RE IMBD SFT WHT CHLK IP, DLL YEL MIN FLO THRU, PR TO GD SCAT INTER-XLN POR, NO VIS SHOW OR CUT

3403 TO 3420' DOLO-OFF WHT CRM- HD DNS TO BRITT, F-XLN TO TT SUCRO MTRX, SME IMBD ANG DOLO GRNS SCAT THRU, DLL YEL MIN FLO, NO VIS POR, NO VIS SHOW

DOLO- OFF WHT CRM- HD DNS TO BRITT, F-XLN TO CRS SUCRO MTRX, SUCRO S-CHLKY IP, TR ABTD SFT WHT CHLK, TR IMBD SMLL S-RND TO RND QURTZ GRNS IP, DLL YEL MIN FLO, NO POR TO PR TO FR INTER-XLN POR, NO VIS SHOW

DOLO- WHT OFF WHT- V SUCRO TO CRS SUCRO MTRX, ABTD IMBD SMLL ANG DOLO GRNS THRU, TR LMNTD LT GRN CLAY IMBD IP, DLL YEL MIN FLO THRU, PR TO FR TO GD INTER-XLN POR THRU, NO VIS SHOW

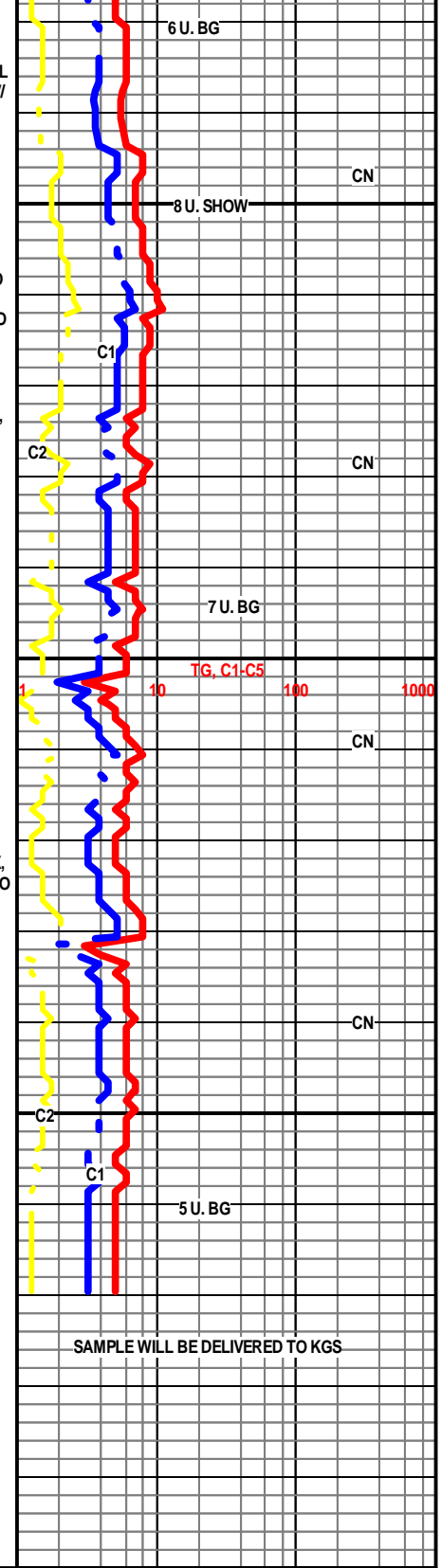
DOLO- OFF WHT TO WHT- V/SUCRO TO CRS SUCRO MTRX F-XLN IP,ABTD IMBD SMLL ANG DOLO GRNS THRU, ABTD IMBD SFT WHT CHLK, DLL YEL MIN FLO, PR FR- TO GD INTER-XLN POR, TR PR MICRO VUG POR, NO VIS SHOW

R.T.D. @ 5:50 AM

CTCH 2.0 HRS

TRIP OUT F/ LOGS @ 7:50 AM

WEATHERFORD/ LIBERAL, KANSAS



SAMPLE WILL BE DELIVERED TO KGS