



Scale 1:240 (5"=100') Imperial
Measured Depth Log

Well Name: STOS ET AL 1-18
Location: SEC 18-17S-15W , Barton co. Kansas
License Number: 15-009-25435-0000
Spud Date: 06/23/2010
Surface Coordinates: 250' FSL, 360' FEL
Region: Wildcat
Drilling Completed: 07/01/2010

Bottom Hole
Coordinates:
Ground Elevation (ft): 2003" K.B. Elevation (ft): 2013'
Logged Interval (ft): 1744' To: 3680' Total Depth (ft): 3680'
Formation: Lansing, Arbuckle
Type of Drilling Fluid:

Printed by WellSight Log Viewer from WellSight Systems 1-800-447-1534 www.WellSight.com

OPERATOR

Company: Samuel Gary Jr, & Assoc.
Address: 1515 Wykoop, Ste. # 700
Denver, Colo. 80202
Geo: Tom Fertal

GEOLOGIST

Name: Rodney Napier
Company: Earth Tech OGL, Inc.
Address: PO Box 683
Hooker, Okla . 73945
Off. 888-543-8378 Cell: 620-655-8252

Circulating Report

START UN MANNED LOGGING UNIT 06/25/2010
START 24 HR MANNED UNIT 6/27/2010
CFS /CTCH3316' 20,40,60 TOTAL 1.5 HRS
TOH FOR STRAP ON PIPE AND COLLARS

DST's Report


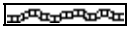
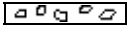
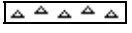
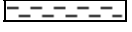



DST#1 3312'-3334' 22' ANCHOR
IFP WEAK BLOW BUILT TO 1 3/4"
ISI DEAD NO BLOW BACK
FFP WEAK BLOW BUILT TO 1 1/4"
FSI NO BLOW BACK
RECOVERY: 25' MUDDY WATER WITH OIL SPECKS BHT 111 CLORIDES 1900
IH:1610
FIF:16
FFF:24
ISI: 1118
SIF: 26
SFF: 39
FSI:1106
FH: 1474
TIMES: 15,60,60,180





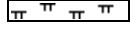
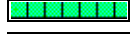
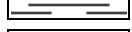
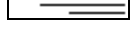
DST#2 3398'-3410'
ANCHOR 12'
IFP BLOW BUILT TO 3/4 IN
ISI DEAD NO BLOW BACK
FFP DEAD NO BLOW BACK
FSI DEAD NO BLOW BACK
RECOVERY: 10' MW WITH OIL SPECKS
BHT 110 DEG
IH:1647
FIF:13
FFF:15
ISI:1129
SIF:16
SFF:18
FSI:1112
FH:1511
TIMES 15,60,22,75

DST's Report







DST#3 3528'-3578'
ANCHOR 50'
IFP: STRONG BLOW IN 1 1/2 MIN
ISI:STRONG BLOW BACK BOB IN 24 MIN
FFP STRONG BLOW BACK IN 1 MIN
FSI STRONG BLOW BACK BOB IN 34 MIN
RECOVERY: 252' FREE OIL,189'MO/90% OIL 10% MUD
189' HOCGM 10% GAS, 50% OIL, 40% MUD, 504' GIP
TOTAL RECOVERY 630' BHT 114 DEG GRAVITY 32
IH:1722
FIF:142
FFF:168
ISI:990
SIF:243
SFF:259
FSI:933
FH 1589
TIMES: 10,60,10,60

ROCK TYPES

	Anhy
	Bent
	Brec
	Cht
	Clyst
	Coal
	Congl
	Dol

	Gyp
	Igne
	Lmst
	Meta
	Mrlst
	Salt
	Shale
	Shcol

	Shgy
	Sltst
	Ss
	Till
	Carb sh
	Dol
	Dtd
	Gry sh

	Sandylms
	Shale
	Sltstn
	Shlyslts
	Slysh
	Lms

ACCESSORIES

MINERAL

- Anhy
- Arggrn
- Arg
- Bent
- Bit
- Breclrag
- Calc
- Carb
- Chtdk
- Chtlt
- Dol
- Feldspar
- Ferrpel
- Ferr
- Glau
- Gyp
- Hvymin
- Kaol
- Marl
- Minxl
- Nodule
- Phos
- Pyr

- Salt
- Sandy
- Silt
- Sil
- Sulphur
- Tuff
- Chlorite
- Dol
- Sand
- Sity

FOSSIL

- Algae
- Amph
- Belm
- Bioclst
- Brach
- Bryozoa
- Cephal
- Coral
- Crin
- Echin
- Fish
- Foram

- Fossil
- Gastro
- Oolite
- Ostra
- Pelec
- Pellet
- Pisolite
- Plant
- Strom
- Fuss
- Oomold

STRINGER

- Anhy
- Arg
- Bent
- Coal
- Dol
- Gyp
- Ls
- Mrst
- Sltstrg
- Ssstrg
- Carbsh

- Clystn
- Dol
- Grysh
- Gryslt
- Lms
- Sandylms
- Sh
- Sltstn

TEXTURE

- Boundst
- Chalky
- Cryxln
- Earthy
- Finexln
- Grainst
- Lithogr
- Microxln
- Mudst
- Packst
- Wackest

OTHER SYMBOLS

POROSITY TYPE

- Earthy
- Fenest
- Fracture
- Inter
- Moldic
- Organic
- Pinpoint
- Vuggy

SORTING

- Well
- Moderate
- Poor

ROUNDING

- Rounded
- Subrnd
- Subang

- Angular

OIL SHOWS

- Even
- Spotted
- Ques
- Dead
- Gas show

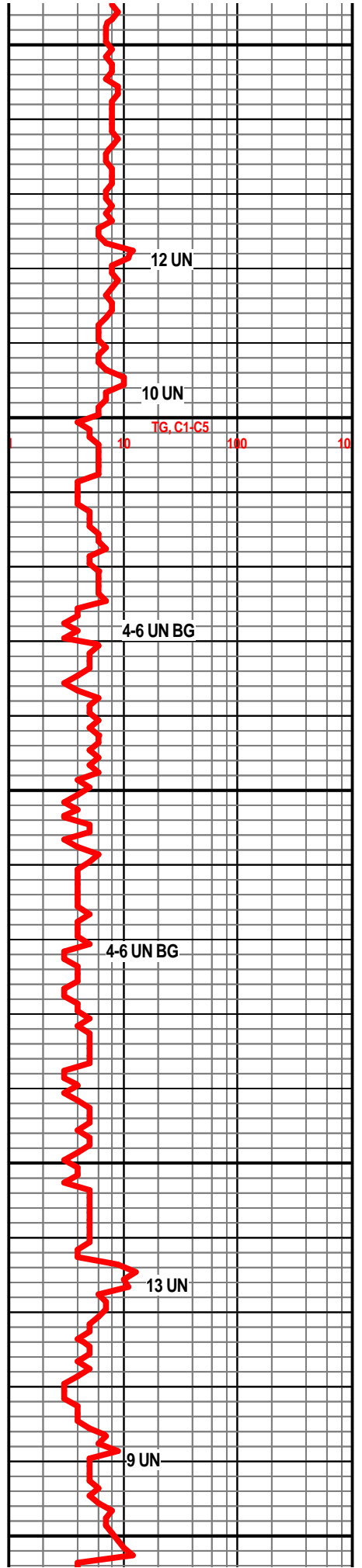
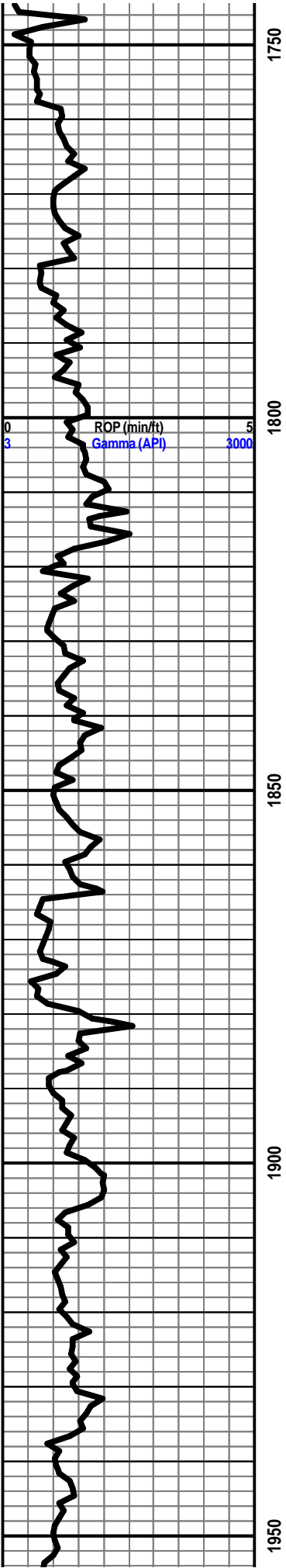
INTERVALS

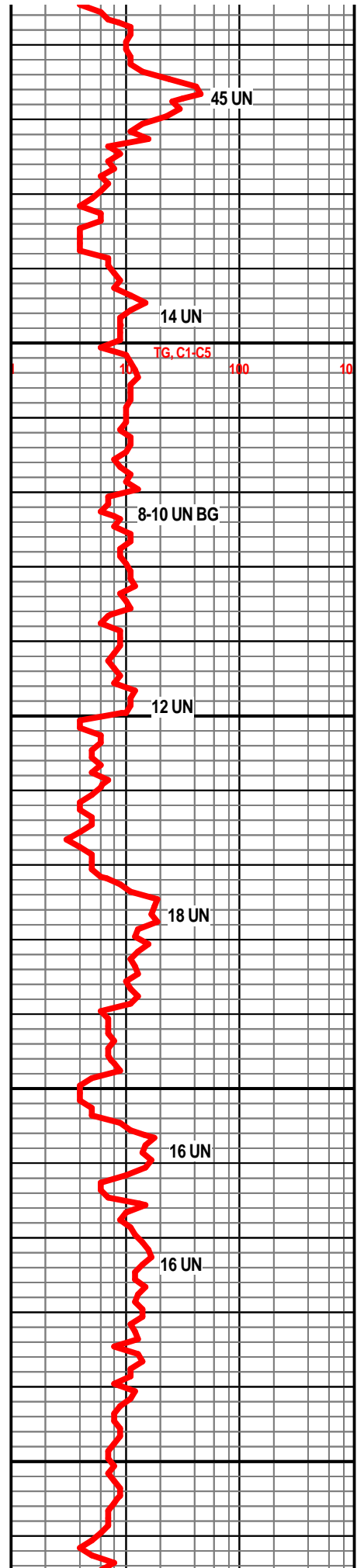
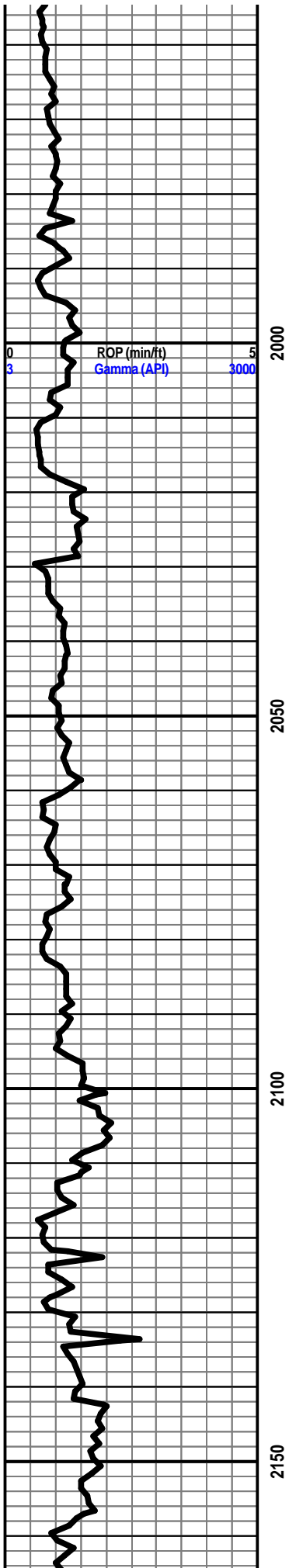
- Core
- Dst
- Dst

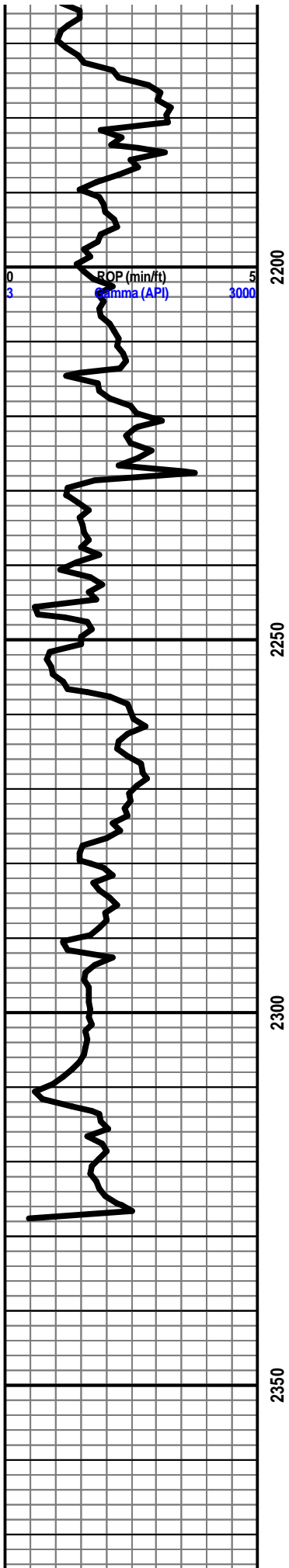
EVENTS

- Rft
- Sidewall

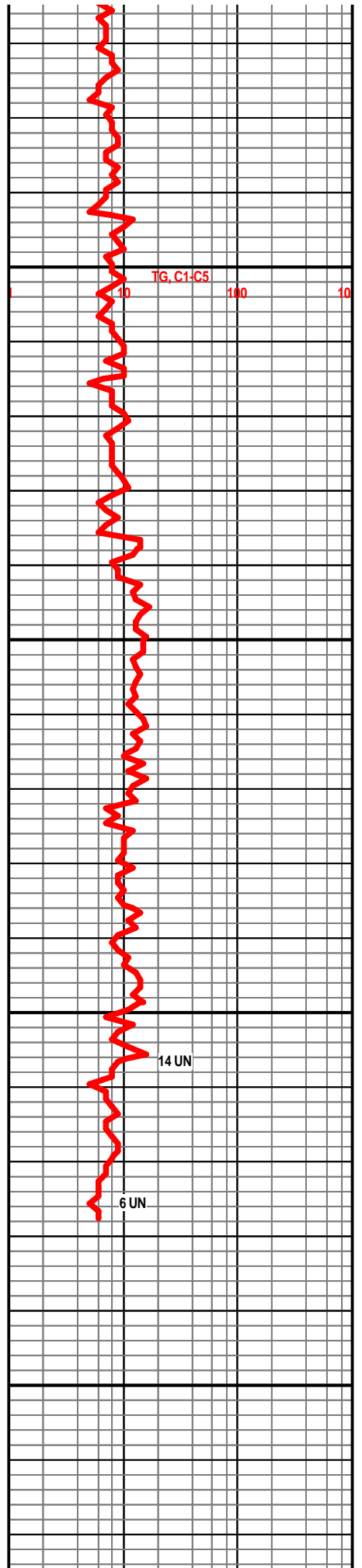
Curve Track 1		Depth	Lithology	Oil Shows	Geological Descriptions	TG, C1-C5			
ROP (min/ft)	Gamma (API)					TG (units)	C1 (units)	C2 (units)	C3 (units)
0	3	17			START UN MANNED LOGGING UNIT 06/25/2010	10	100	10	10
DRILLING CONTRACTOR VAL-6						DRILLING CONTRACTOR VAL-6			
SURVEY'S 1092' 2 DEG						SURVEY'S 1092' 2 DEG			
3316' 1 DEG						3316' 1 DEG			

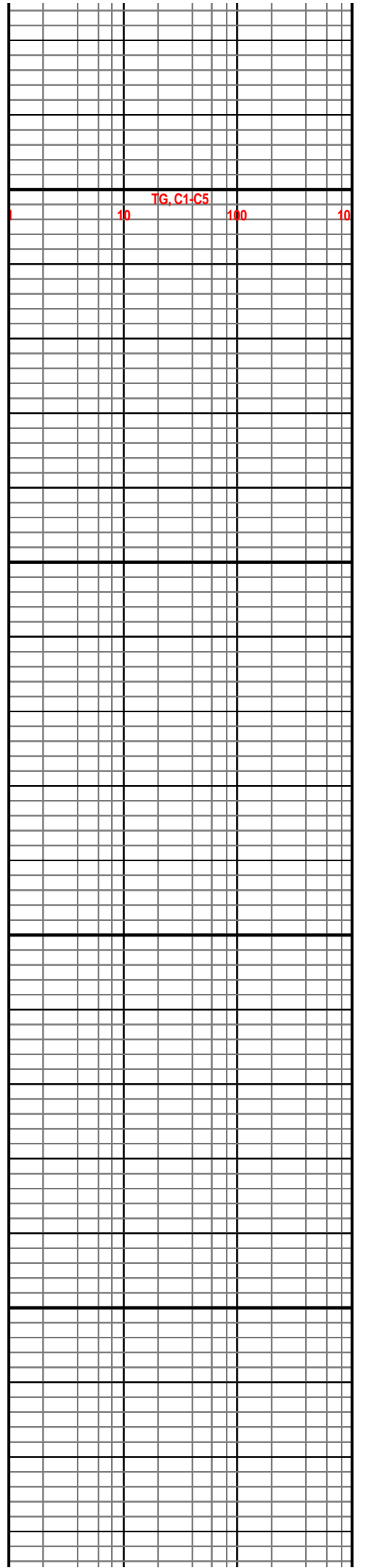
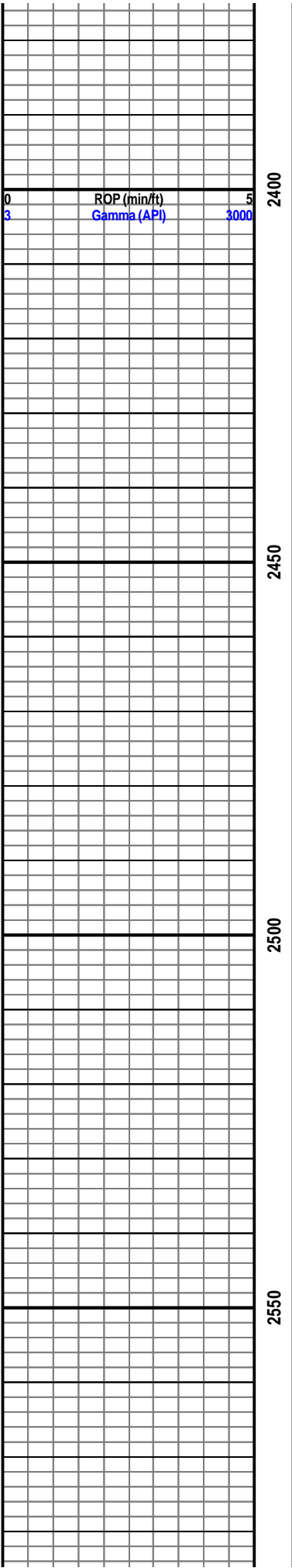


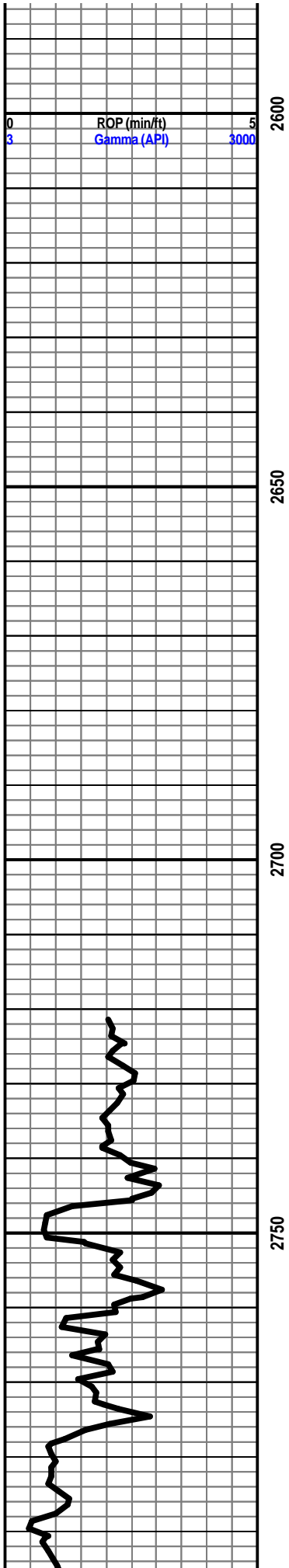




COMPUTER WAS OFF STARTING 2327'

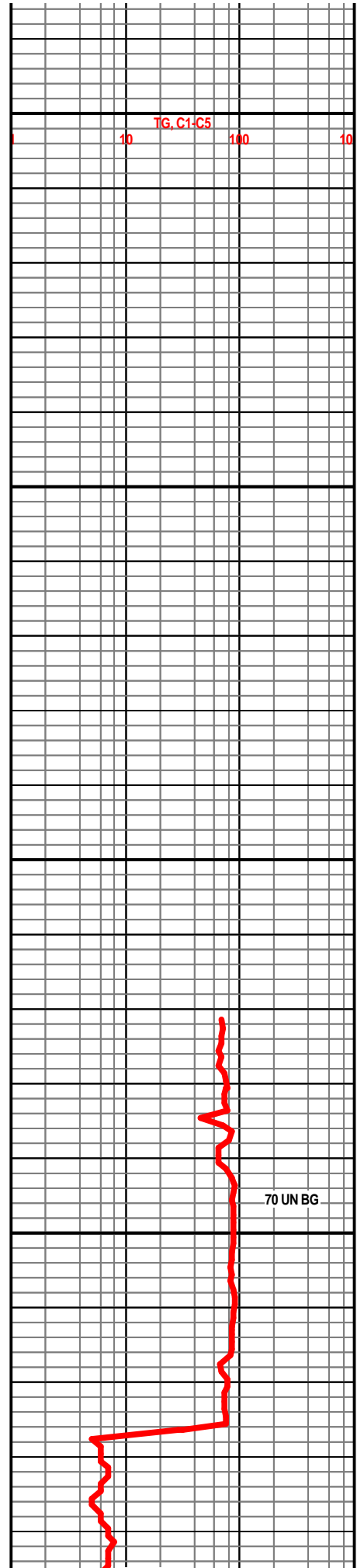


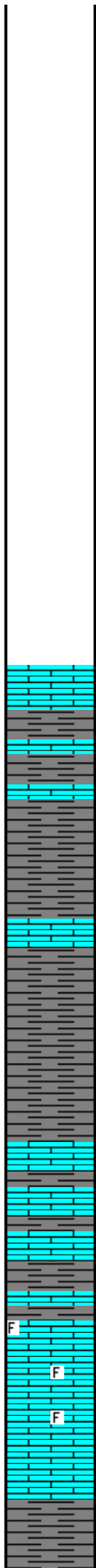
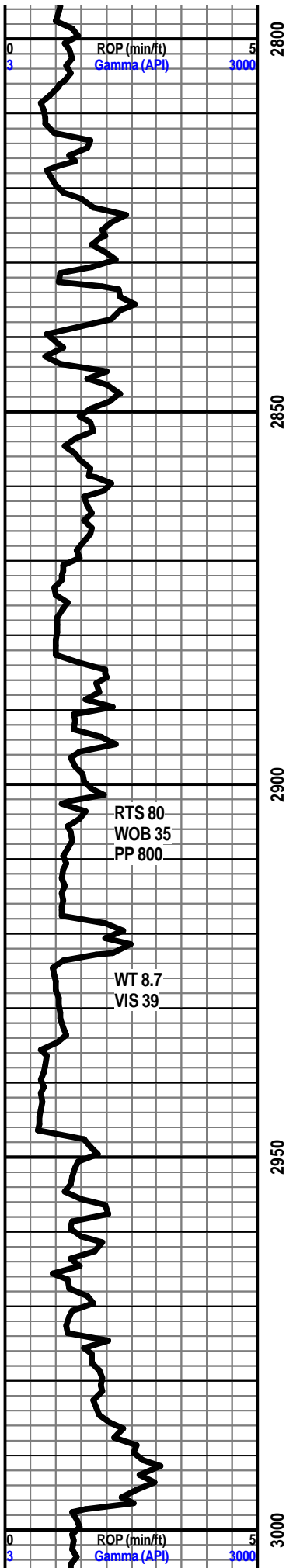




COMPUTER TURNED BACK ON 2721'

BASE ROOT SHALE 2751' -738'





START DISPLACEMENT @2808'

DISPLACEMENT COMPLETE 2848'

START 24 HR MANNED UNIT 6/27/2010

SH GRY BRN FRM BLKY TO SMOOTH BRITT SILTY IP

2920' @ 00:01 AM 06/28/2010

SH DK GRY TO GRY SMOOTH SFT TO SILTY

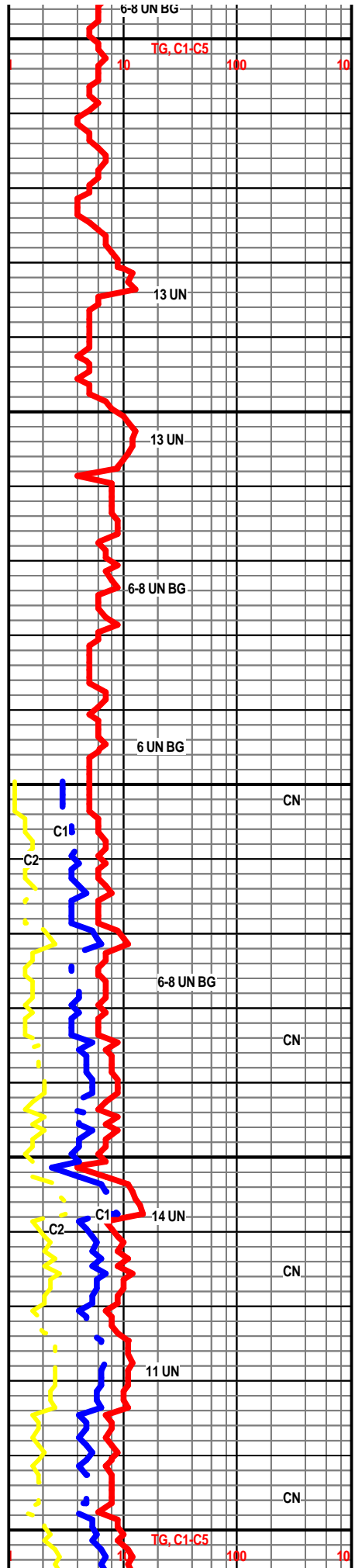
HOWARD 2947' -934'

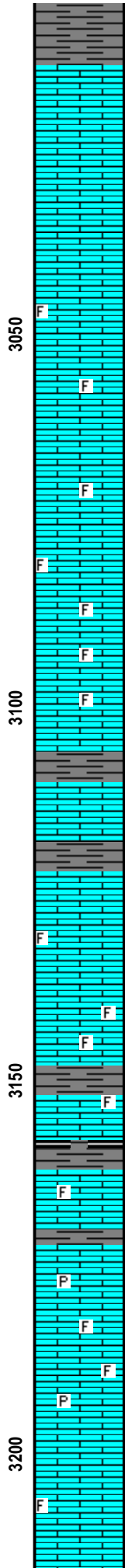
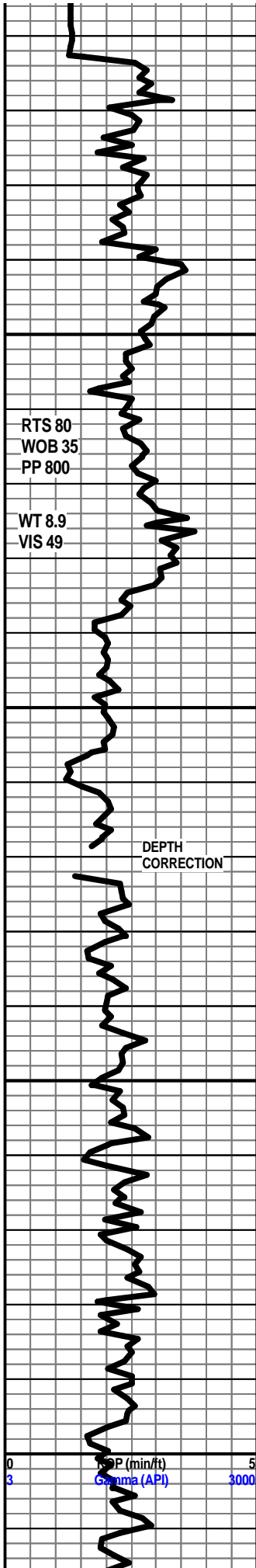
LS GRY TN LT TN HD DN BRITT VVFN TO FN XLN MTX DIS GRY SH IP NO FLO NO VIS POR NO VIS SHOW

LS TN LT TN BUFF HD TO FRM BRITT VVFN TO FN XLN MTX SUB-CHLKY IP TR IMBD GRY SH IP TR IMBD FOSS FRG IP TR POOR INTERXLN POR NO FLO NO CUT NO VIS SHOW

LS DK GRY TO GRY HD DN TT CRYPTO TO VVFN XLN MTX NO FLO NO VIS POR NO VIS SHOW

SH LT GRY LT BRN SMOOTH SFT SILTY THRU





TOPEKA 3013' -1000'

LS LT GRY TN LT TN BUFF MOTT IP HD DN BRITT VVFN TO FN XLN MTX RE-XLN MTX IP TR IMBD SM QRTZ XLS IP SCATT TR LT YLW FLO IP TO NO FLO POSS TT INTERXLN POR IP NO CUT NO VIS SHOW

LS LT TN BUFF HD DN TT CRYPTO TO VVFN XLN MTX TR IMBD FOSS FRG IP TR DULL YLW FLO NO CUT NO VIS POR NO VIS SHOW

LS CRM BUFF LT TN HD TO FRM BRITT VVFN TO FN XLN MTX SUB-CHLKY TR IMBD FOSS TR DULL YLW TO LT YLW FLO TR POOR MICRO PP POR IP TO NO POR NO CUT NO VIS SHOW

LS DK TN TO TN HD DN TT CRYPTO TO VVFN XLN MTX NO FLO NO VIS POR NO VIS SHOW

LS TN LT TN BUFF HD TO FRM VVFN TO FN XLN MTX TR IMBD FOSS IP SUB-CHLKY IP TR IMBD FOSS IP SUCRO TXT IP SCATT LT YLW FLO NO VIS POR NO CUT NO VIS SHOW

SH GRY LT GRY TN BUFF MOTT HD TO FRM VVFN TO FN XLN MTX TR DISS GRY SH IP NO FLO

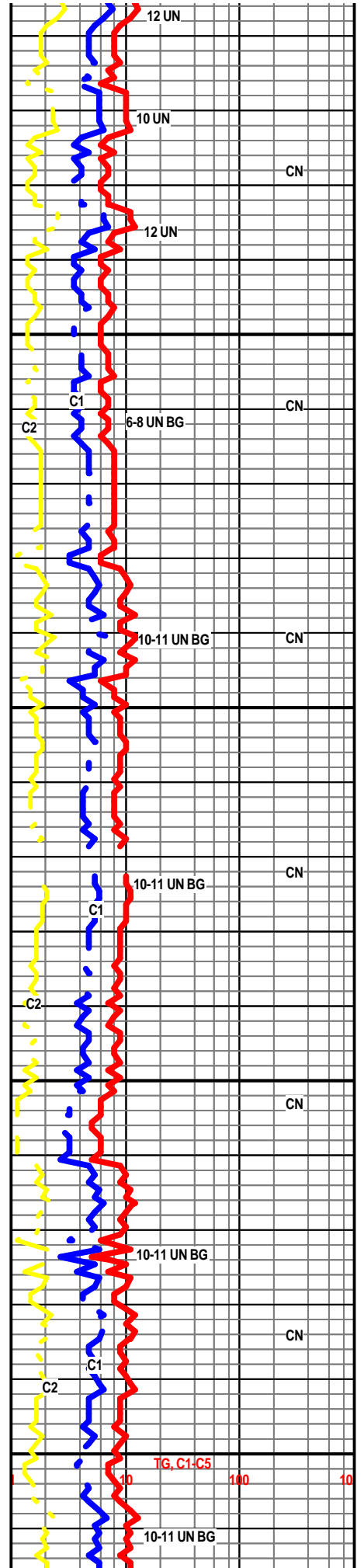
Le COMPTON 3124' -1111'

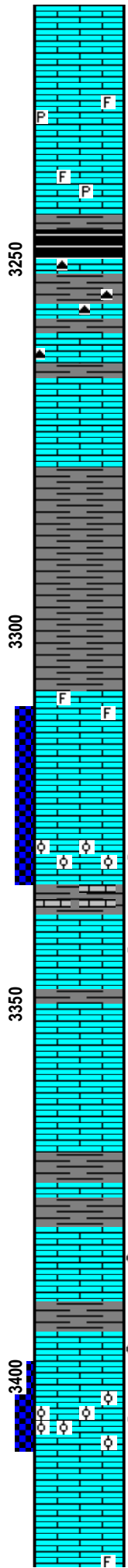
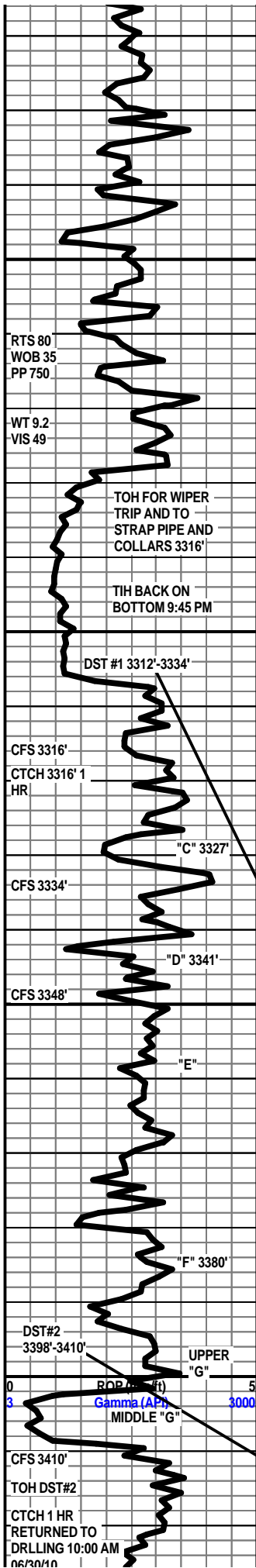
LS TN LT TN BUFF CRM FRM VVFN TO FN XLN MTX TR IMBD FOSS FRG IP TR IMBD SM QRTZ XLS IP TR IMBD VR/SM LS GRNS IP SUCRO TXT IP SCATT DULL YLW FLO POSS TT INTERXLN POR TO TR VUGS IP ONLY NO STAIN NO ODOR NO CUT NO VIS SHOW

LS CRM BUFF TR OFF WHT HD DN BRITT CRYPTO TO VVFN TO FN XLN MTX TR LOOSE FOSS FRG IN TRAY DISS GRY TO BRN SH NO FLO NO VIS POR NO VIS SHOW

LS LT TN CRM BUFF HD TO FRM BRITT CRYPTO TO VVFN TO FN XLN MTX TR IMBD FOSS FRG TR PYR IP NO FLO NO VIS POR NO VIS SHOW

LS TN LT TN BUFF HD TO FRM VVFN TO FN XLN MTX TR IMBD FOSS IP SUB-CHLKY IP TR IMBD FOSS IP SUCRO TXT IP SCATT LT YLW FLO NO VIS POR NO CUT NO VIS SHOW





LS GRY DK TN TO TN BUFF MOTT FN TO TR MD XLN MTX RE-XLN MTX IMBD FOSS TR PYR NODULES IN TRAY NO FLO NO VIS POR NO VIS SHOW

HEEBNER 3245' - 1232'

SH BLK CRAB

LS DK TN TO TN HD DN TT CRYPTO XLN MTX TR GRN CHERT IP DISS TO IMBD DK GRY SH IP NO FLO NO VIS POR NO VIS SHOW

LS GRY LT GRY HD DN TT CRYPTO XLN MTX NO FLO NO VIS POR NO VIS SHOW

DOUGLAS 3277' -1264'

SH DK GRY TO GRY SMOOTH FRM TO SFT SPLNTY SILTY IP

LANSING 3306' -1293'

LS TN LT TN CRM BUFF HD DN TT TO BRITT CRYPTO TO VVFN TO FN XLN MTX TR IMBD FOSS IP SUCRO TXT IP LT BRITE YLW FLO 70% NO STAIN NO ODOR NO CUT NO VIS SHOW

3327'-3334' LS CRM BUFF OFF WHT FRM BRITT FN TO MD XLN MTX RE-XLN MTX IMBD OOLITES SUB-CHLKY TR V/FN CALC XLS IMBD IN VUGS TO TR IMB QRTZ XLS IP ONLY LT BRITE YLW FLO 58% STAIN 25% HAS FAIR ODOR 40,60,80 MIN SAMPLES VUG POR 10% POOR TO FAIR TO TR GOOD INTER FOSS POR 40% FAIR FLUSH CUT SLOW MILKY BLUE STREAM CUT FROM TWO ROCKS TO LT BRITE YLW RING CUT

LS OFF WHT TO WHT FRM BRITT VVFN TO FN XLN MTX TR IMBD OOLITES TR IMBD CHLK TR IMBD FOSS FRG TR PYR NODULES IN TRAY TR HD CHLK PIECES WITH DEAD OIL STAIN TR DEAD OIL STAIN ONE ROCK FAINT TR LT BRN STAIN ON TWO ROCKS SCATT LT YLW FLO 5% TR MICRO VUGS ONE ROCK TR MICRO PP POR NO OTHER VIS POR FAINT ODOR TO NO ODOR VR FAINT FLUSH CUT TO NO CUT VRY POOR SHOW

LS CRM BUFF OFF WHT TO WHT HD DN TT CRYPTO TO VVFN XLN MTX TR IMBD FOSS IP TR LMNTD PYR IP LT YLW FLO NO ODOR NO STAIN NO VIS POR NO VIS SHOW

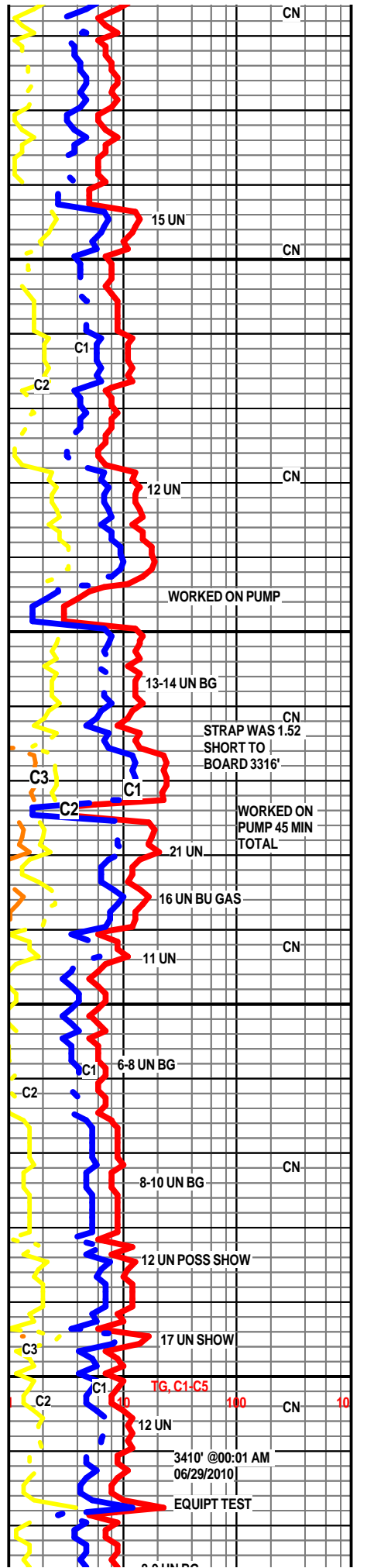
3380'-3386' LS DK TN TO TN LT TN CRM BUFF MOTT IP HD DN TT VVFN TO FN XLN MTX IMBD FOSS TR LT YLW FLO 3% TR STAIN ON TWO ROCKS FAINT ODOR FAINT FLUSH CUT POOR TIGHT SHOW

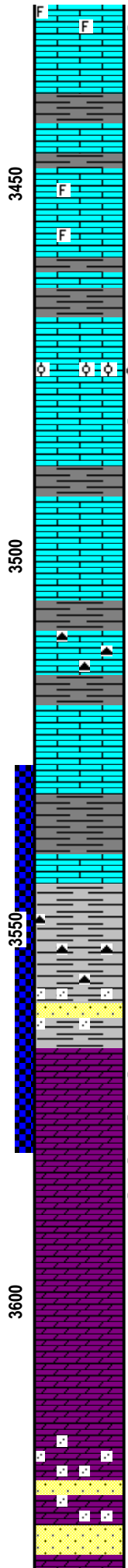
3394'-3401' LS CRM BUFF OFF WHT HD DN TT CRYPTO TO VVFN TO FN XLN MTX RE-XLN MTX TR IMBD FOSS IP ONLY TR IMBD PYR TR IMBD SM QRTZ XLS IP TR STAIN 10% LT YLW TO DULL YLW FLO 30% FAINT TO POOR ODOR NO VIS POR VRY FAINT FLUSH CUT POOR TT SHOW

LS 3401'-3410' LS CRM BUFF LT TN TN ON ROCK DUE TO STAIN HD TO FRM FN TO MD XLN MTX OOMOLDIC THRU IMBD OOLITES THRU TR IMBD CHLK IP ONLY TR VR/SM CALC XLS IMBD IN VUGS TR GUMMY WHT CHLK IP LT BRITE YLW FLO 60% TR LIVE OIL ON 20% FAIR TO GOOD ODOR FAIR TO GOOD INTEROOLITIC POR FAIR MICCRO PP POR TO GOOD VUG POR INSTANT FLUSH CUT TO SLOW MILKY BLUE STREAM CUT

3409'-3421' LS LT GRY TN LT TN BUFF HD DN TT CRYPTO XLN MTX NO FLO NO VIS POR NO VIS SHOW

3421'-3431' LS LT TN CRM BUFF OFF WHT LT GRY IP MOTT HD DN





BRITT VVFN TO FN XLN MTX IMBD FOSS TR IMBD OOLITES IP TR LMNTD PYR IP SUB-CHLKY IP LT BRITE YLW MIN FLO THRU TR DEAD OIL STAIN ON TWO ROCKS NO VIS POR FAINT TO NO FLUSH CUT TO VRY FAINT LT YLW RING CUT.

3431'-3450' LS LT GRY TN CRM BUFF HD DN TT TO BRITT VVFN TO FN XLN MTX TR IMBD PYR IP TR DISS GRY SH IP NO FLO NO VIS POR NO VIS SHOW

3450'-3460' GRY LT GRY DK TN TO TN HD DN TT CRYPTO TO VVFN XLN MTX TR IMBD FOSS IP LT YLW FLO IP NO VIS POR NO VIS SHOW

SH DK GRY TO GRY FRM SMOOTH BRITT CALC TO LMY

LS TN LT TN CRM BUFF HD TO FRM BRITT FN XLN MTX TR MD XLN MTX RE-XLN MTX IP TR IMBD VR/SM OOLITES TO TR MD OOLITES IP VRY FAINT ODOR TR STAIN ON TWO ROCKS LT BRITE YLW FLO 70% POSS TT INTERXLN POR TO NO POR FAINT TO POOR FLUSH CUT SLOW SPURTY MILKY BLUE STREAM CUT FROM ONE ROCK POOR TT SHOW

3480-3488' LS CRM OFF WHT TO WHT HD TO FRM BRITT CRYPTO TO FN XLN MTX TR IMBD FOSS TR VR/FN CALC XLS IP TR IMBD CLR QRTZ XLS IP LT YLW FLO 60% NO ODOR TR OIL STAIN ON 1% NO VIS POR FAINT INSTANT FLUSH CUT TO NO CUT POOR TT SHOW

LS DK TN TO TN GRY TO LT GRY HD DN TT CRYPTO XLN MTX THRU DISS GRY SH IP NO FLO NO VIS POR NO VIS SHOW

LS TN BUFF HD DN TT CRYPTO XLN MTX TR LT TN TO OPAQUE CHERT IP NO FLO NO VIS POR NO VIS SHOW

LS CRM OFF WHT TO WHT HD DN TT CRYPTO TO VVFN TO FN XLN MTX TR SM LOOSE QRTZ XLS IN TRAY TR LMNTD PYR IP TR DISS DK BRN SH IP NO FLO NO VIS POR NO VIS SHOW

BASE KANSAS CITY 3532' -1519'

SH DK GRY TO GRY HD TO FRM BLKY CALC SMOOTH BRITT

SH DK BRN TO BRN /RED HD SMOOTH WAXY TXT TR IMBD LT BRN TO TN ORNG CHERT IP TR IMBD SUB-RND TO RND SM SS GRNS IP

SS CLR FRSTY WHT UNCONSOLIDATED SM SUB-ANG TO SUB-RND SS GRNS TR MD SUB-RND TO RND SS GRNS NO STAIN NO ODOR NO CUT NO VIS SHOW

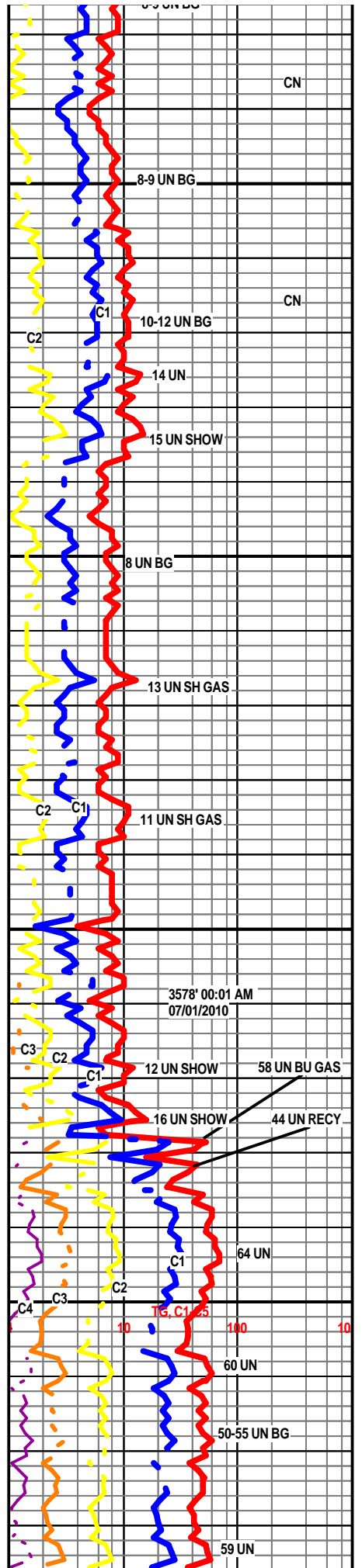
ARBUCKLE 3568' -1555'

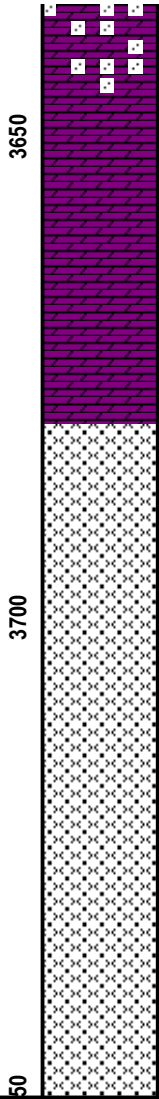
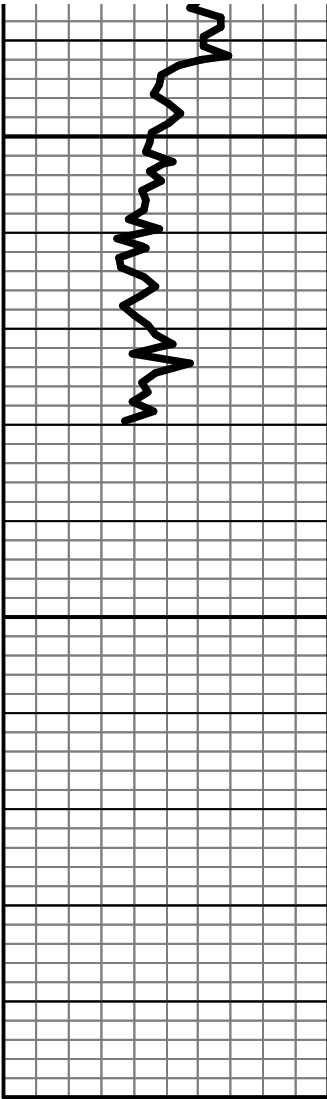
3568'-3573' DOL LT TN DUE TO STAIN OFF WHT TO WHT HD FRM VVFN TO FN TO MD XLN MTX CLUSTERS OF ANG TO SUB-ANG DOL GRNS WITH TR IMBD SM TO MD CLR TO FRSTY QRTZ XLS TR SM DOL GRNS SUCRO TXT IP TR IMBD FOSS ONE ROCK STAIN IN 65% OF ROCK LT BRITE YLW FLO 40% GLDN YLW FLO 50% POOR TO FAIR TO TR GOOD INTERXLN POR TR MICRO PP POR 20% INSTANT FAIR TO GOOD ODOR 20-60 MIN SAMPLE INSTAN FLUSH CUT TO SLOW MILKY BLUE STREAM CUT TWO ROCKS STRONG MILKY BLUE STREAM CUT TO GLDN YLW RING CUT TO BRN LEACH ON DISH

3573'-3578' DOL TN LT TN BUFF HD TO FRM FN XLN MTX SM IMBD SM DOL XLS TR IMBD SM TO MD QRTZ XLS TR VRY SM CALC XLS IP SUCRO TX FAIR TO GOOD ODOR GLDN YLW FLO THRU STAIN 45% 5% ROCK SATURATED WITH STAIN TR LIVE OIL IP. POOR TO FAIR INTERXLN TO FAIR PP AND MICRO PP POR TR VUGS IP INSTANT FLUSH CUT TO GOOD STRONG MILKY BLUE STREAM CUT

3578'-3587' DOL TN LT TN DUE TO STAIN BUFF OFF WHT TO LT GRY HD TO FRM VF-FN XLN MTX TO MD XLN MTX IMBD SM TO MD ANG DOL XLS TR IMBD CLR TO FSTY WHT QRTZ XLS TR IMBD OOLITES IP DULL GLDN TO LT GLDN FLO THRU STAIN 45% POOR TO FAIR INTERXLN POR TO TR PP POR INSTANT FLUSH CUT TO GOOD SLOW MILKY BLUE STREAM CUT

3587'-3616' DOL OFF WHT TO WHT HD TO FRM BRITT VVFN TO FN XLN MTX SUB-CHLKY TO CHLKY IMBD VR/SM TO SM SUB-RND TO RND DOL GRNS POSS POOR TO FAIR INTERXLN TO INTER GRAN POR LT YLW FLO NO STAIN NO ODOR NO CUT N VIS SHOW





3617'-3623' DOL OFF WHT TO WHT HD DN TT CRYPTO TO VVFN XLN
 MTX TR IMBD CLR SM RND SS GRNS IMBD IP NO FLO NO VIS POR NO
 VIS SHOW

3629'-3633' SS CLR FRSTY WHT SUB-ANG TO RND TO SUB-RND SM TO
 MD GRNS UNCONSOL LOOSE IN TRAY NO STAIN NO FLO NO VIS SHOW

3633'-3647' DOL OFF WHT TO WHT HD TO FRM BRITT VVFN TO FN XLN
 MTX IMBD SM SUB-RND TO RND SS GRNS POSS FAIR INTERXLN TO
 INTER GRAN POR NO FLO NO STAIN NO ODOR NO CUT N VIS SHOW

DOL LT GRY OFF WHT TO WHT HD FRM CRYPTO TO VVFN TO FN XLN
 MTX SUCRO TXT TR IMBD PYR TO LMNTD PYR IP NO FLO NO VIS POR
 NO VIS SHOW

RTD 3680' @ 1:18 pm 07/01/2010
CTCH 1.5 HRS
TOH FOR LOGS

