



Scale 1:240 (5"=100') Imperial
Measured Depth Log

Well Name: Rolfs Farm # 1-7
 Location: Sec 7 18s 9w, Rice, Kansas
 License Number: 15-159-22617-0000
 Spud Date: 7/26/2010
 Surface Coordinates: 550' FNL & 2150' FEL
 Region: Bredfelt
 Drilling Completed: 7/01/2010

Bottom Hole Coordinates:
 Ground Elevation (ft): 1746' K.B. Elevation (ft): 1756'
 Logged Interval (ft): 2450' To: 3360' Total Depth (ft): 3360'
 Formation: Lansing, Arbuckle
 Type of Drilling Fluid:

Printed by WellSight Log Viewer from WellSight Systems 1-800-447-1534 www.WellSight.co

OPERATOR

Company: Samuel Gary Jr, & Assoc.
 Address: 1515 Wynkoop, Ste.# 700
 Denver, Colo. 80202
 Geo: Clayton Camozzi

GEOLOGIST

Name: Tim Hedrick
 Company: Earth Tech OGL, Inc.
 Address: PO Box 683
 Hooker, Okla . 73945
 Off. 888-543-8378 Cell: 620-655-2050

DST information

DST#1, 3261 TO 3272 MISRUN, 12-14' HARD FILL, TOOL SLID THRUOUT RECOV.- 20' DRILL MUD

DST#2 3261 TO 3272' 15-60-60-120, IF- 2' BLOW, SLID TOOL 3-4' TO BOTTOM, LOST MUD AROUND PACKERS DURING SLIDE, ISI- NO BLOW, FF- WK BLD TO 7.5 "/ FSI- NO BLOW
 IH- 1609, FH- 1566/ IF- 65 TO 75, FF- 77 TO 130/ ISI-1143, FSI-1137, RECOVERED- 235' TF, 110' MW, 60%W.,40%M/ 125' SW, BHT 115 DEG./ 31,500 CHL.- @.17 RW

ROCK TYPES

Anhy	Gyp	Shgy	Sandy lms
Bent	Igne	Sltst	Shale
Brec	Lmst	Ss	Sltstn
Cht	Meta	Till	Shlys lts
Clyst	Mr lst	Carb sh	Slt ysh
Coal	Salt	Dol	Lms
Congl	Shale	Dtd	
Dol	Shcol	Gry sh	

ACCESSORIES

MINERAL	Salt	Fossil	Clystn
Anhy	Sandy	Gastro	Dol
Arggrn	Silt	Oolite	Grysh
Arg	Sil	Ostra	Gryslt
Bent	Sulphur	Pelec	Lms
Bit	Tuff	Pellet	Sandy lms
Brecfrag	Chlorite	Pisolite	Sh
Calc	Dol	Plant	Sltstn
Carb	Sand	Strom	
Chtdk	Slt y	Fuss	
Chtlt		Oomold	
Dol	FOSSIL	STRINGER	
Feldspar	Algae	Anhy	
Ferrpel	Amph	Arg	
Ferr	Belm	Bent	
Glau	Bioclst	Coal	
Gyp	Brach	Dol	
Hvymin	Bryozoa	Gyp	
Kaol	Cephal	Ls	
Marl	Coral	Mrst	
Minxl	Crin	Sltstrg	
Nodule	Echin	Ssstrg	
Phos	Fish	Carbsh	
Pyr	Foram		
			TEXTURE
			Boundst
			Chalky
			Cryxln
			Earthy
			Finexln
			Grainst
			Lithogr
			Microxln
			Mudst
			Packst
			Wackest

OTHER SYMBOLS

POROSITY TYPE

- E Earthy
- B Fenest
- F Fracture
- X Inter
- A Moldic
- O Organic
- P Pinpoint
- V Vuggy

SORTING

- W Well
- M Moderate
- P Poor

ROUNDING

- R Rounded
- r Subrnd
- a Subang

- A Angular

OIL SHOWS

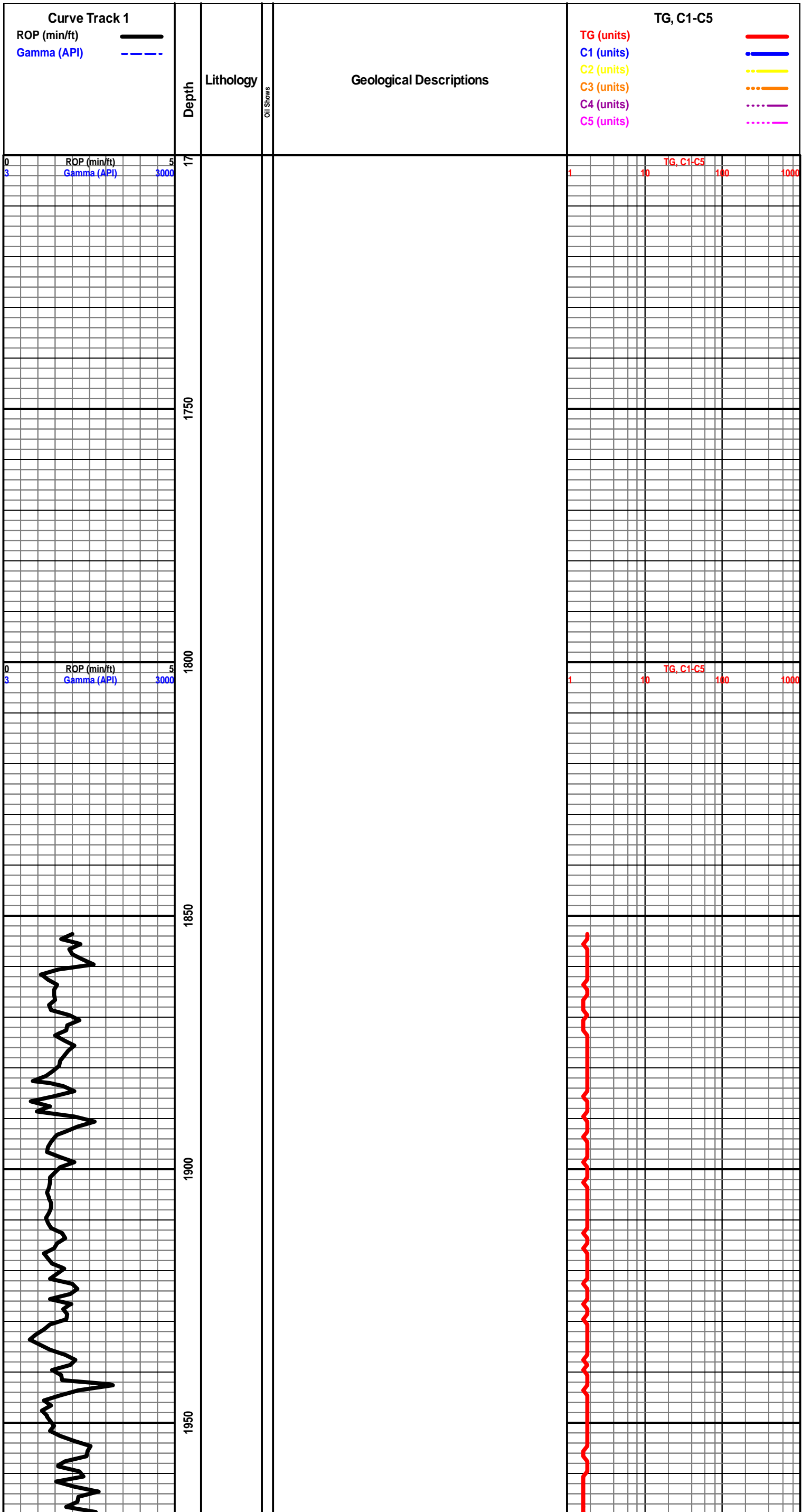
- Even
- Spotted
- Ques
- Dead
- ⊗ Gas show

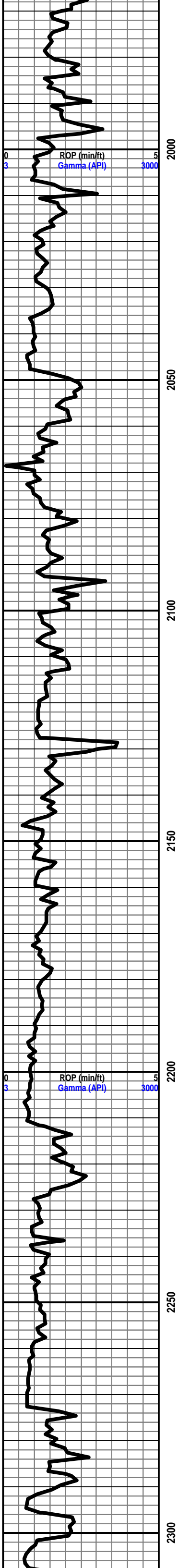
INTERVALS

- Core
- Dst
- Dst

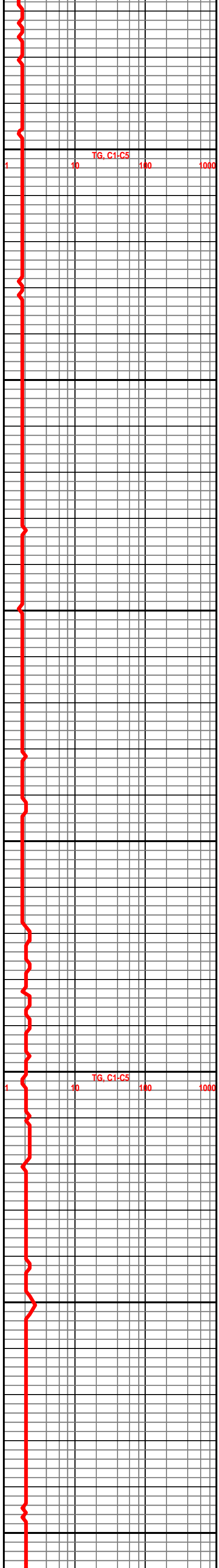
EVENTS

- ▤ Rft
- ▴ Sidewall

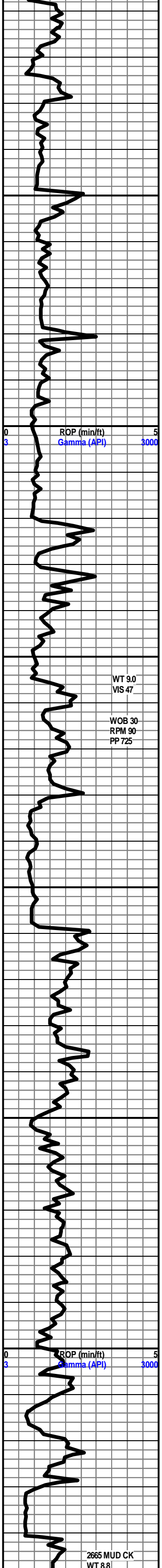




2000 2050 2100 2150 2200 2250 2300



2000 2050 2100 2150 2200 2250 2300



2350

2400

2450

2500

2550

2600

ROP (min/ft)
Gamma (API)

0 3 5 3000

WT 9.0
VIS 47

WOB 30
RPM 90
PP 725

ROP (min/ft)
Gamma (API)

0 3 5 3000

2665 MUD CK
WT 8.8

START 24 HR MANNED UNIT @ 2450' 6/29/10

SH- LT TO MD GY- FRM BLKY , V/ SMTH TXT

LS- CRM BFF LT GY- HD DNS TO BRITT, MOTT, MD-F-XLN
S-SUCRO IP, HVY TR IMBD LT GY SH, TR CALC XLS IMBD
IP, NO FLO, NO VIS POR, NO VIS SHOW

SEVERY 2480' - 724'

SH- LT TO MD GY- FRM IP TO V/ SFT SLTY TXT

SLTST- FRSTY LT GY- HD TT TO FRI- F-V/F-GRN QURTZ,
PR SRT, AND S-ANG GRNS, ABTD IMBD LMNTD ANF DISS
BLK CARB SH SCAT THRU, TR GLAUC IP, NO FLO, NO VIS
POR, NO VIS CUT OR SHOW

TOPEKA 2508' - 752'

LS- CRM LT TN TN- HD DNS -MD-F-XLN , RE-XLN IP, TR
FOSS FRGS IP, SLI TR IMBD SH IP, NO FLO, NO VIS POR,
NO VIS SHOW

SH- LT GY- FRM BLKY W/ GRNY TXT, SLI CALC

LS- LT TN TN - HD DNS , F-V/F-XLN, RE-XLN IP, TR FOSS
FRGS IP, SLI TR CRYPTO-XLN IP, NO FLO, NO VIS POR,
NO VIS SHOW

LS- OFF WHT CRM BFF- HD BRITT, MD-XLN TO SUCRO IP,
RE-XLN, ABTD SMLL FOSS FRGS SCAT THRU, TR PYR
IMBD IP, NO FLO, NO VIS POR, NO VIS SHOW

LS- CRM LT TN LT GY IP, MOTT, HD DNS TO BRITTIP,
F-V/F-XLN, TR FOSS FRGS IP, TR LMNTD AND DISS SH
THRU, NO FLO, NO VIS POR, NO VIS SHOW

LS- CRM LT TN- HD DNS TO BRITT, MD-XLN TO TT SUCRO
MTRX, TR FOSS FRGS IP, NO FLO, NO VIS POR, NO VIS
SHOW

LS- CRM BFF- HD DNS TO BRITT, MD-F-XLN RE-XLN
MTRX, ABTD FOSS FRGS IP, HVY T SFT WHT CHLK, NO
FLO, NO VIS POR, NO VIS SHOW

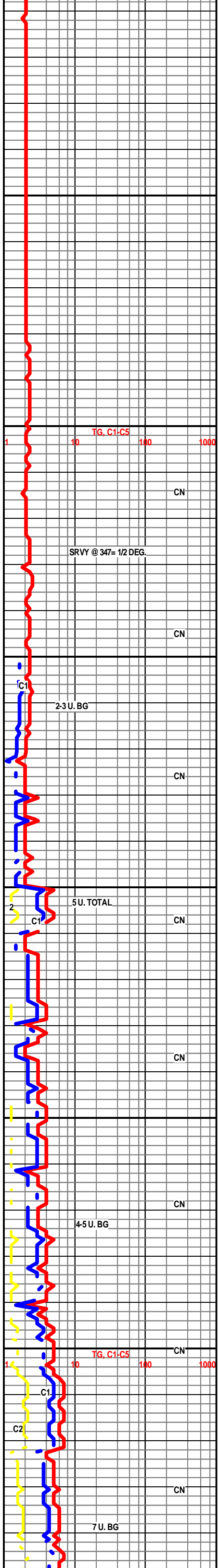
SH- BLK SFT CARB

LS- WHT OFF WHT - V/ SFT TO FRM IP, ABTD SFT WHT
GMMY CHLK W/ PYR CLSTRS IP, NO FLO, NO VIS POR,
NO VIS SHOW

LS- CRM BFF LT TN- HD DNS TO BRITT, MD-XLN TO
SUCRO MTRX, RE-XLN , ABTD IMBD FOSS FRGS THRU,
HVY TR CALC XLS IMBD THRU, NO FLO, NO VIS POR, NO
VIS SHOW

LeCompton 2641' - 885'

LS- LT TN TN LT GY- HD DNS TOT R BRITT, F-V/F-XLN,



TG, C1-C5 100 1000

CN

SRVY @ 347= 1/2 DEG.

CN

C1

2-3 U. BG

CN

2

C1

5U. TOTAL

CN

CN

CN

4-5 U. BG

CN

1

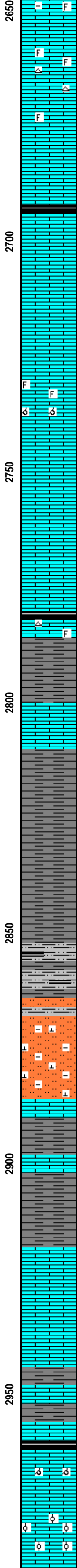
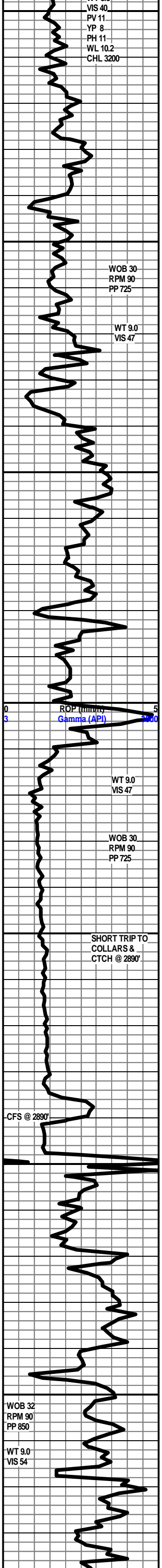
TG, C1-C5 100 1000

C1

C2

CN

7 U. BG



RE-XLN MTRX, FOSS FRGS IP TR IMBD LT GY SH, TR SMLL CALC XLS IP, NO FLO, NO VIS POR, NO VIS SHOW

LS- LT TN TN- HD DNS TR BRITT, MD-F-XLN, RE-XLN MTRX, ABDT IMBD FOSS FRGS THRU, HVY TR WHT WTHRD CHRT, NO FLO, NO VIS POR, NO VIS SHOW

LS- OFF WHT CRM- HD DNS TO TR BRITT, V/ TT SUCRO MTRX TO SUCRO SLIS-CHLKY IP, TR SMLL CALC XLS IMBD IP, TR FOSS FRGS, NO FLO, NO VIS POR, NO VIS SHOW

SH- BLK SFT CARB W/ HVY TR LMNTD PYR, SMLL GAS BBLNG OUT OF ROCK

LS- LT TN TN- HD DNS V/F-XLN, SLI TR FOSS IP, NO FLO, NO VIS POR, NO VIS SHOW

LS- OFF WHT CRM- HD TO MD HD, V/ SUCRO MTRX TO SUCRO SLI S-CHLKY, NO FLO, NO VIS POR, NO VIS SHOW

LS- CRM BFF- HD BRITT, MD-F-XLN RE-XLN MTRX, ABDT IMBD SMLL TO MD ANG LM GRNS IP, GRDNG TO MD-XLN, RE-XLN, MICRO OOLMLD IP, SMLL CALC XLS IMBD THRU, TR FOSS IP, NO FLO, FR TO GD VIS INTER-XLN POR TO GD MICRO VUG POR, PR SCAT OOLMLD POR, NO VIS SHOW OR CUT

LS- CRM BFF- HD DNS, F-XLN IP TO V/ TT F-SUCRO MTRX, TR FOSS IP, NO FLO, NO VIS POR, NO VIS SHOW

HEEBNER 2778' - 1022'

SH- BLK SFT CARB

LS- OFF WHT TO TWHT - F-XLN, RE-XLN, TR FOSS, WHT CHRT IP, LT YEL MIN FLO, NO VIS POR, NO VIS SHOW

SH- LT GY TO LT GRN- FRM BLKY SMTH TXT

LS- OFF WHT CRM- HD DNS TO TR BEITT, F-V/F-XLN IP TO SUCRO S-CHLKY, TR SFT WHT CHLK IP, TR VRGTD SMLL CALC XLS IP, DLL YEL MIN FLO IP TO NO FLO, NO VIS POR, NO VIS SHOW

DOUGLAS 2809' - 1053'

SH- LT GY TO GY- FRM IP TO V/ SFT SLTY LOOKING TXT, LMNTD SH IP

SLTST- FRSTY LT GY- V-V/F-GRN QURTZ, ABDT DISS AND LMNTD SH THRU, TR GLAUC, MICRO MICA, TR IMBD CARB SH IP, NO FLO, NO VIS POR, NO VIS SHOW

SLST- FRSTY LT V/ LT GY TO TN- HD TT TO TR FRI, V/V/F-GRN QURTZ, HVY TR IMBD FINLEY DISS SH THRU, TR LMNTD LT GY SH IP, CALC CMNT, POSS DOLO CMNT IP, NO FLO, NO VIS POR, NO VIS CUT OR SHOW

LS- TN DK TN- HD DNS TO BRITT, MD-F-XLN, RE-XLN MTRX, FOSS FRGS IMBD IP, SMLL CALC XLS IMBD IP, TR FREE FOSS IP, NO FLO, NO VIS POR, NO VIS SHOW

BR. LIME 2898' - 1142'

LS- DK TN BRN- HD DNS, F-V/F-XLN, RE-XLN MTRX IP

SH- LT TO MED GY- FRM BLKY, V/ CALC TO LMY

LANSING 2919' - 1163'

LS- CRM LT TN TN- HD DNS F-V/F-XLN, TR FOSS FRGS IP, NO FLO, NO VIS POR, NO VIS SHOW

LS- CRM LT TN TN- HD DNS BRITT, MD-XLN TO SUCRO IP, NO FLO, NO VIS POR, NO VIS SHOW

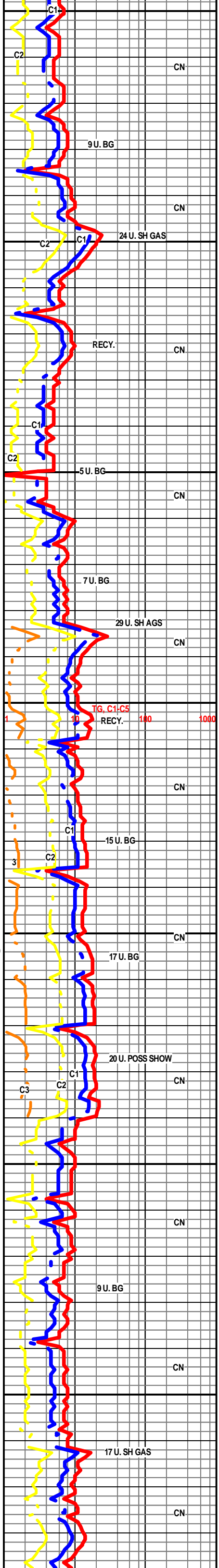
LS & SH INTERBEDS- LT TN BRN LT GY- HD DNS MOTT, MD-F-XLN RE-XLN MTRXS, FOSS IMBD IP, HVY TR IMBD LT GY SH, NO FLO, NO VIS POR, NO VIS SHOW

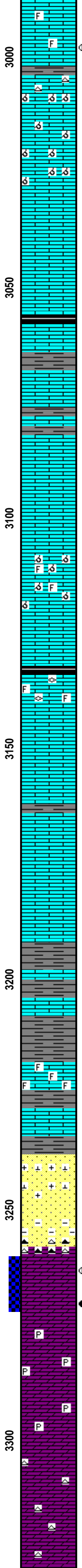
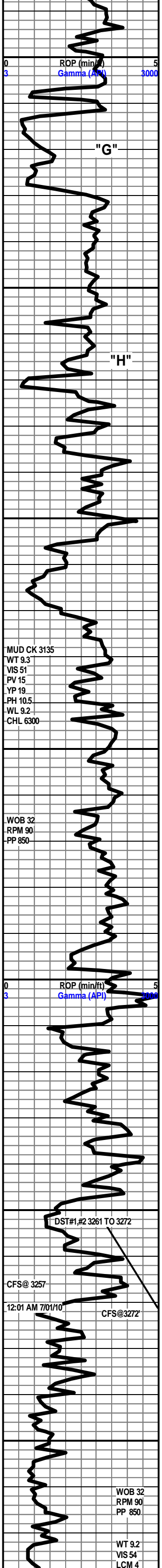
"X" 2959' - 1203'

SH- BLK SFT CARB

LS- CRM TN BRN- HD DNS MD-F-XLN REXLN MTRX, V/ OOLMLD TO SLI OOL, TR LRG CALC XLS IMBD IP, IMBD SFT WHT CHLK IP, V/ DLL YEL FLO SCAT THRU, PR TO FR OOLMLD POR, TR V/ PR VUG POR, NO VIS CUT OR SHOW

LS- CRM BFF LT TN - HD DNS, TR BRITT, F-V/F-XLN, V/ RE-XLN MTRX FOSS, V/ OOL, ABST CALC XLS INTEROOL, V/ DLL YEL FLO SCAT THRU, NO VIS POR, NO VIS SHOW





2996 TO 2999' LS- OFF WHT CRM BFF- HD DNS TO BRITT, MD-F-XLN, RE-XLN MTRX, V/ FOSS, SLI TR WHT SFT CHLK, V/ DLL YEL GLD FLO THRU, SCAT BRIT YEL GLD IN 50%, LT TN STN IN 30%, GOOD OIL ODOR, PR TO FR- INTERFOSS POR IP, TO NO POR, NO FLUSH TO PR TO FR SLO STREAM CUT

3006 TO 3009' LS- CRM LT TN BRN- HD DNS TO BRITT, MD-VF-XLN, RE-XLN MTRX, V/ OOLMLD, SMLL TO MD CALC XLS IMBD IP, ABDT WTHRD MOTT CHRT, HVY TR SFT WHT CHLK IP, NO FLO, GD VIS OOLMLD POR, PR SCAT VUG POR, NO VIS CUT OR SHOW

LS- OFF WHT BFF- HD BRITT, MD-F-XLN, RE-XLN MTRX, V/ OOLMLD, TR FOSS IP, HVY TR S-CHLKY IP, NO FLO, ABDT GD TO EXCEL OOLMLD POR, TR SCAT VG POR, NO VIS SHOW OR CUT

LS- CRM LTN TN- HD DNS V/ F-CRYPTO-XLN, TR S-LITHO IP, FRLY NON DESCRIPT, NO FLO, NO VIS POR, NO VIS SHOW

"Z" 3056' - 1300'

SH- BLK SFT CARB TO GY W/ PYR CLSTRS IMBD IP

LS- OFF WHT CRM- V/ SUCRO S-CHLKY MTRX TO ABDT FRM CHLK IP, IMBD GY SH IP, NO FLO, NO VIS POR, NO VIS SHOW

LS- CRM BFF- HD BRITT, MD-XLN, RE-XLN MTRX, V/ FOSS IP, HVY TR VRGTD MD CALC XLS ON ONE FACES OF ROCK, TR SFT WHT CHLK, NO FLO, FR VIS INT-XLN TO FR VUG POR SCAT, NO VIS SHOW

LS- CRM LT TN TN- HD DNS BRITT, MD-XLN, RE-XLN MTRX, V/ FOSS SLI S-CHLKY IP, TR IMBD LT GRN SH, NO FLO, NO VIS POR, NO VIS SHOW

LS- OFF WHT CRM BFF- HD BRITT, MD-XLN, RE-XLN MTRX, V/ OOLMLD, TR FREE FOSS IP, TR SFT WHT CHLK IN TRAY, NO FLO, EXCEL OOLMLD POR, GD SCAT MICRO VUG POR, NO VIS SHOW OR CUT

STARK 3131' - 1375'

SH- BLK SFT CARB

LS- CRM BFF- HD BRITT, MD-F-XLN, RE-XLN MTRX, ABDT IMBD FOSS FRGS THRU, TR SFT CHLK IMBD IP, NO FLO, PR SCAT MICRO OOLMLD POR IP TO PR MICRO VUG POR IP, NO VIS CUT

LS- TN DK TN- HD DNS TR BITT, F-VF-XLN, TT SUCRO IP, TR FOSS IP, NO FLO, NO VIS POR, NO VIS SHOW

LS- CRM BFF- HD DNS TO BRITT, F-XLN TO S-SUCRO TO TT SUCRO MTRX, SLI TR S-CHLKY, NO FLO, NO VIS POR, NO VIS SHOW

LS- CRM LT TN TN- HD DNS, PRED A/AB, F-XLN TO S-SUCRO MTRX, NO FLO, NO VIS POR, NO VIS SHOW

BASE KAN. CITY 3199' - 1443'

SH- LT GRN TO V/ LT GY, SMTH TXT TO SLI GRNY TXT IP CALC TO LMY

SH- RD BRN GRN- FRM BLKY, SMTH TXT

LS- TN LT BRN- HD DNS, F-VF-XLN, RE-XLN MTRX, ABDT IMBD FOSS FRGS THRU, NO FLO, NO VIS POR, NO VIS SHOW OR CUT

SH- RED PNK YLLW PRPLE, FRM BLKY TO SPLNTY, GRNY TXT

3238 TO 3247' SS- FRSTY WHT- HD TT TR FRI, F-VF-GRN TO TR MD GRN QURTZ ANG TO S-ANG, FR SRT, SIL TO CALC CMNT IP, FELDSPR SCAT THRU, FNLY DISS DK GY MIN SPCKS, NO FLO, NO VIS POR, NO VIS SHOW

3247 TO 3257' SS- FRSTY WHT, CLR TO FRSTY GRN, F-QURTZ GRNS, S-RND TO RND, PRED UNCSLTD IN BOTTM OF TRY, HVY TR IMBD LT BRN SH IP W/ ABDT FN GRN RND QURTS IMBD IP, NO FLO, NO VIS POR, NO VIS SHOW OR CUT

3257 TO 3260' CHRT- WHT TRSLCNT, GY DK GY MOTT W. F-SUCRO BRN DOLO ON ONE FACES

ARBUCKLE 3261' - 1505'

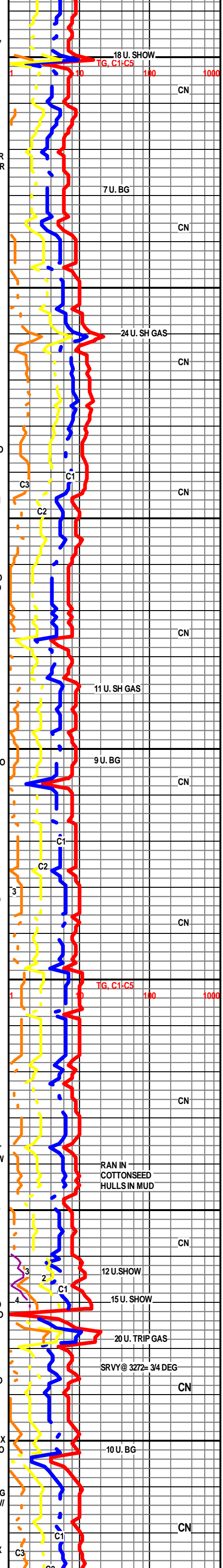
DOLO- DK TN TO BRN HD DNS TO V/ BRITT IP, TN STN IN 60-70%, CRS SUCRO MTRX, ABDT IMBD F-MD ANG DOLO GRNS THRU, DLL YEL GLD FLO THRU, BRIT YEL GLD IN ALL POR 60%, GD OIL ODOR, NO POR IP TO GD TO V/ GD VIS INTER-XLN POR TO FR TO TR GD SCAT MICRO VUG POR, LT FLSH TO V/ LT SLO STRM CUT

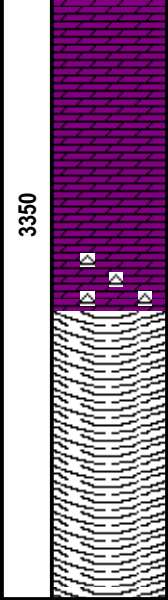
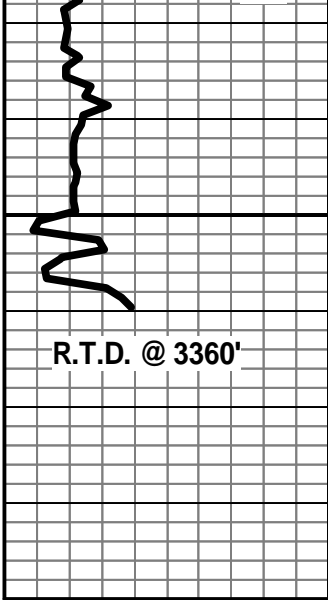
DOLO- LT TN TN- HD DNS TO BRITT IP, F-XLN TO CRS SUCRO MTRX, ABDT IMBD SMLL ANG BRN DOLO GRNS IP, HVY TR PYR CLSTRS IP, NO FLO IP TO DLL YEL MIN FLO IP, NO POR TO PR TO FR VIS INTER-XLN, V/ PR VUG POR, NO VIS SHOW OR CUT

DOLO- FRSTY WHT TR TN- HD DNS TO BRITT, F-XLN TO V/ SUCRO MTRX TO SLI TR SUCRO S-CHLKY MTRX, TR PYR CLSTRS IMBD IP, NO FLO, NO POR IP TO V/ PR MICRO PP POR IP, NO VIS SHOW

DOLO- OFF WHT CRM- HD DNS IP TO BRITT, V/ FN SUCRO MTRX GRDNG TO SUCRO S-CHLKY W/ IMBD CHRT IP, HVY TR ABDT SFT WHT CHLK, V/ DLL YEL MIN FLO THRU, NO VIS POR, NO VIS SHOW

DOLO- CRM OFF WHT- HD TO MD HD- V. FN SUCRO SLI S-CHLKY MTRX THRU TR F-XLN IP, TR WHT CHRT IMBD IP, NO FLO, NO VIS POR, NO VIS





SHOW

DOLO- CRM OFF WHT- HD TO BRITT, MD-XLN TO SUCRO MTRX, TO SUCRO S-CHLKY IP, TR SFT WHT CHLK IP, YEL MIN FLO, PR SCAT MICRO VUG POR IP TO PR MICRO PP POR IP, NO VIS SHOW

DOLO- CRM OFF WHT- HD TO BRITT, MD-XLN TO SUCRO MTRX, TO SUCRO S-CHLKY IP, TR SFT WHT CHLK IP,ABDT WHT TRNSLCNT CHRT, YEL MIN FLO, PR MICRO PP POR IP, NO VIS SHOW

R.T.D. AT 3360' @ 8:29 PM 7/01/2010

CTCH 1.5HRS

TRIP OUT F/ LOGS

WEATHERFORD/ LIBERAL, KANSAS

