



Scale 1:240 (5"=100') Imperial  
Measured Depth Log

Well Name: Mott A #1  
Location: S/2 NW NW NW  
License Number: API 15-007-23561-00-00  
Spud Date: July 1, 2010  
Surface Coordinates: 400' FNL & 330' FWL Section 34-TWP 34 S - RGN 11 W  
Wildcat  
Bottom Hole Coordinates: Vertical Hole  
Region: Barber Co., Ks  
Drilling Completed: July 12, 2010  
Ground Elevation (ft): 1357 K.B. Elevation (ft): 1367  
Logged Interval (ft): 3600 To: 5346 Total Depth (ft): 5346  
Formation: McLish Sand  
Type of Drilling Fluid: Chemical, displaced at 3400'  
Printed by WellSight Log Viewer from WellSight Systems 1-800-447-1534 www.WellSight.com

**OPERATOR**

Company: WOOLSEY OPERATING COMPANY, LLC  
Address: 125 N. MARKET STE 1000  
WICHITA, KANSAS 67202-1729

**GEOLOGIST**

Name: W. SCOTT ALBERG  
Company: ALBERG PETROLEUM, LLC  
Address: 609 MEADOWLARK LANE  
PRATT, KANSAS 67124

## FORMATION TOPS

### LOG TOPS

HUSHPUCKNEY SHALE	4434 (-3067)
B/KC	4484(-3117)
PAWNEE	4585 (-3218)
CHEROKEE GROUP	4633(-3266)
MISSISSIPPIAN	4698(-3331)
COWLEY C2A	4710(-3343)
COMPTON LIMESTONE	4953(-3586)
KINDERHOOK SHALE	4962(-3595)
MAQUOKETA	5014(-3647)
VIOLA	5056(-3689)
SIMPSON GROUP	5147(-3780)
SIMPSON WILCOX	5162(-3795)
MCLISH SHALE	5226(-3859)
MCLISH SANDSTONE	5310(-3943)

## Comments

Surface Casing: Ran 5 joints 10 3/4" x24# LS new, set at 220', tally 212' with 125 sxs on bottom, 1" with 115 sxs at 90', cement up but fell, 75 sxs to surface in cellar. Cement was Class A, 2% gel, 3% cc.

Production Casing: Set 4 1/2" x 10.5#

Deviation Surveys: 1 @ 220', 3/4 @ 4740', 1 @ 5346'

Pipe Strap: Strap 4528.48, Board 4527.23, Strap 1.18' long

Contractor Bit Record:

#1 14 3/4" FRD RR in at 0', out at 220', 2 hrs

#2 7 7/8" PDC, in at 220, out 4500', 53 1/4 hrs

#3 7 7/8" JZ, RR, in at 4500', out at 5246', 50 1/2 hrs

Gas Detector: Woolsey Operating Company, Gas Trailer #1

Mud System: Mud Co, Brad Bortz, engineer

DSTs: Trilobite Testing, Inc; Gary Pevoteaux, Tester

OH Logs: Superior Services, Dual Induction w/ SP, CNL-CDL w PE, GR, Caliper, Sonic.

## DSTs

DST #1 Mississippian, 4604' to 4740', 30"-60'-60"-120", SB BOB in 7 Minutes, Recovered 1070' GIP, 165' Mud w/ few oil specks, 60' SOCM (3% oil, 97% mud). IHP 2246, FHP 2202, IFP 38-74, FFP 104-114, FSIP 1196, BHT 122 degrees.

## Rig & Crews

VAL Drilling Rig #3

Crews: Greg Davidison -Pusher

Josh Holloway -Driller

Mike Cavender - Driller

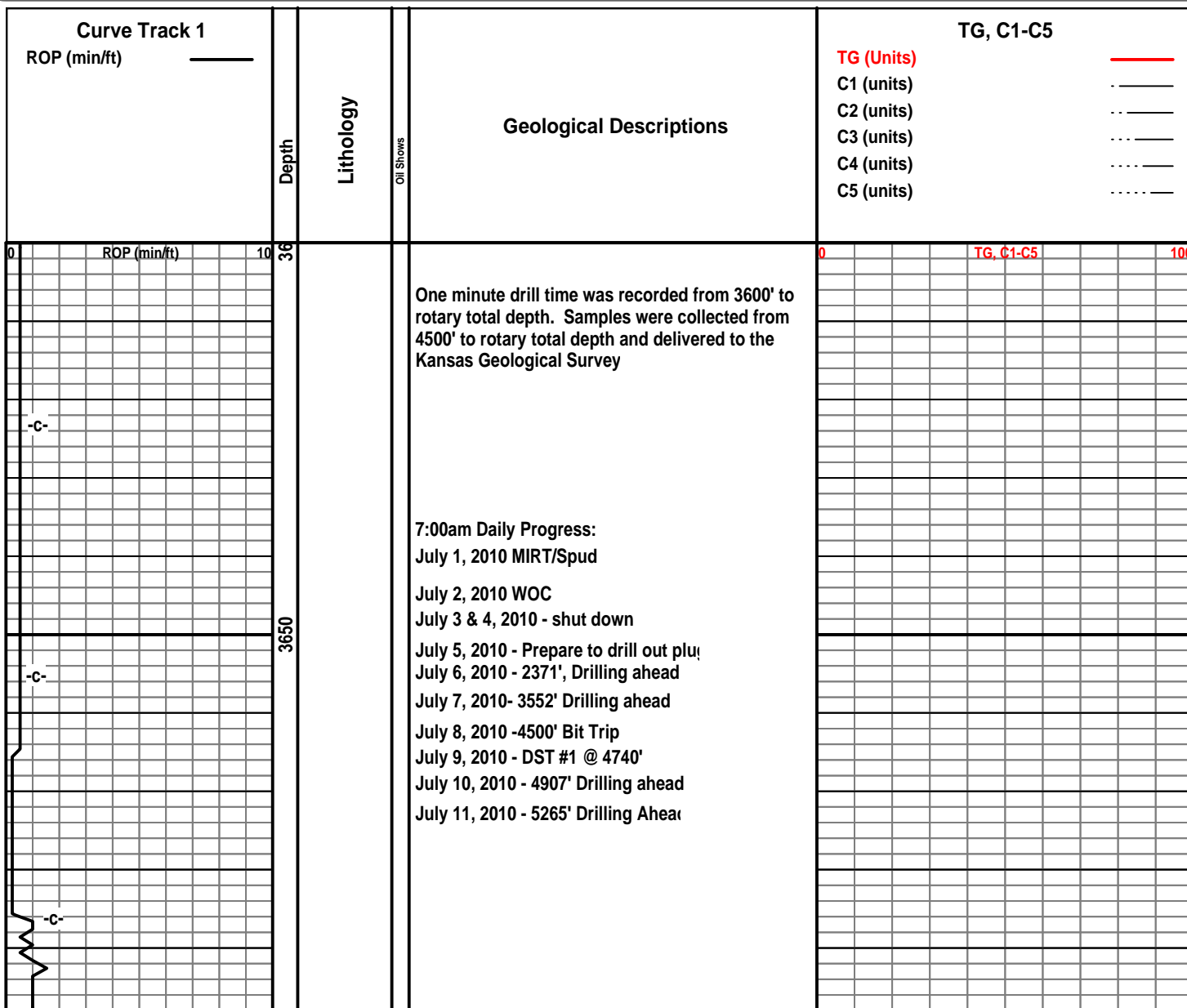
Daniel Olson - Driller

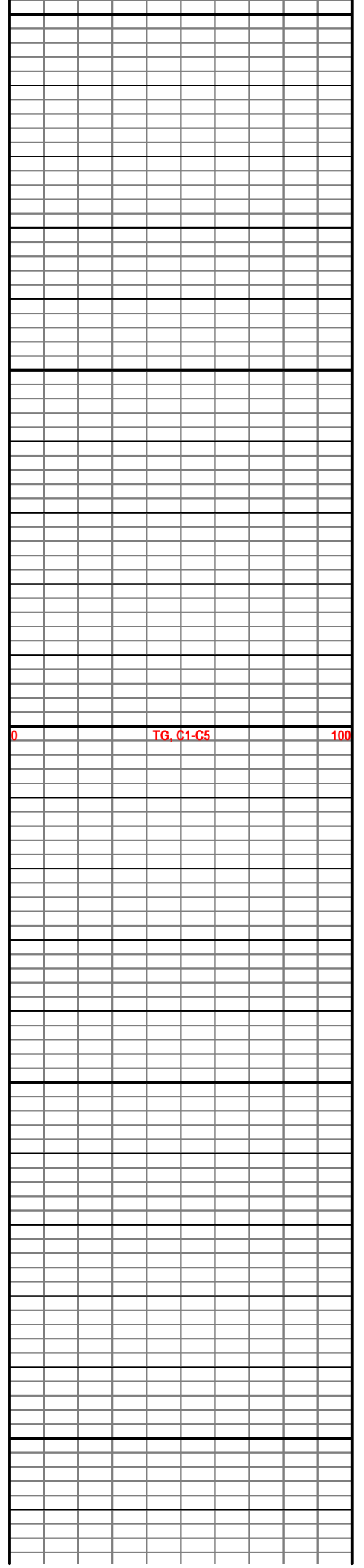
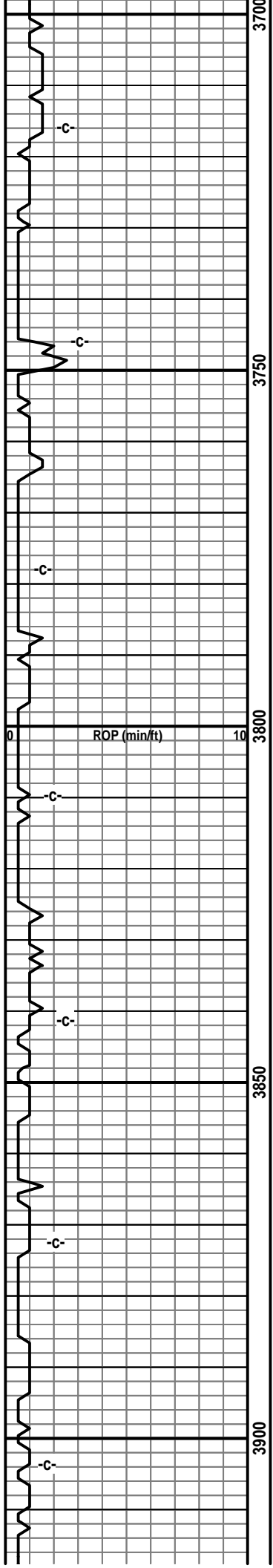
### ROCK TYPES

Anhy	Clyst	Gyp	Mrlst	Shgy
Bent	Coal	Igne	Salt	Sltst
Brec	Congl	Lmst	Shale	Ss
Cht	Dol	Meta	Shcol	Till

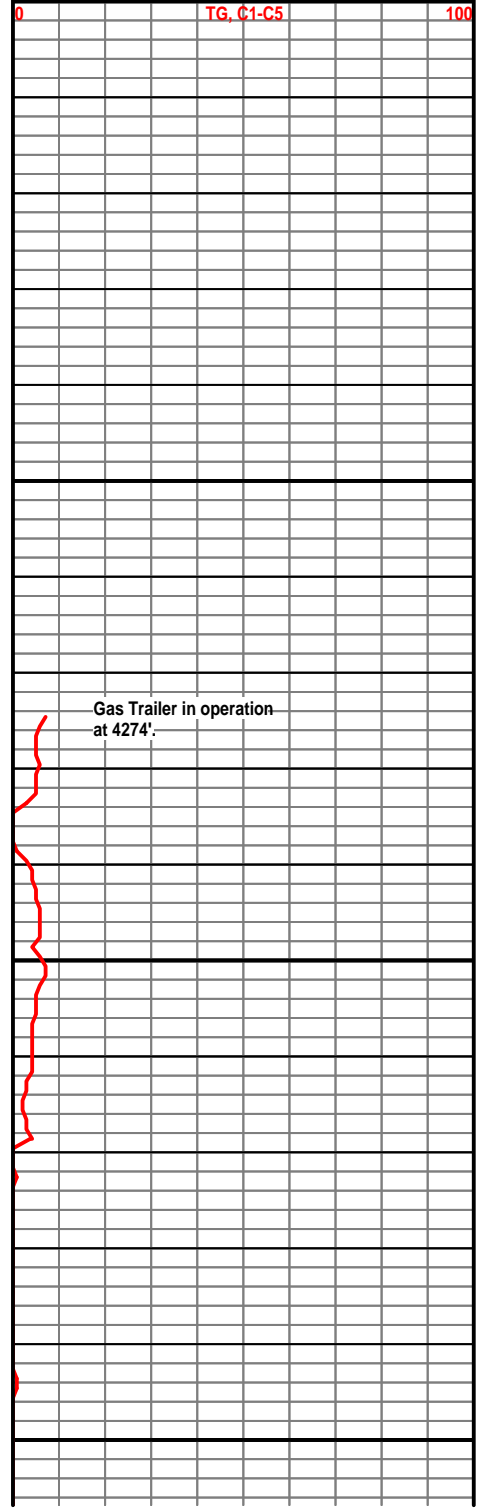
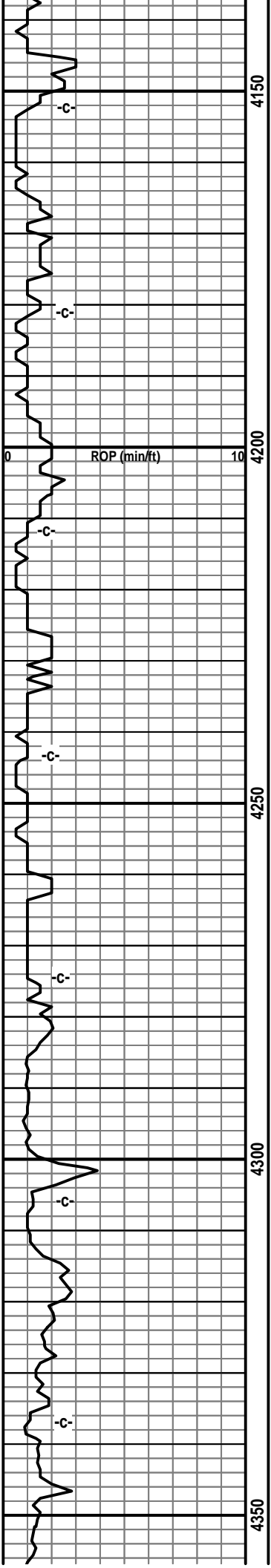
### ACCESSORIES

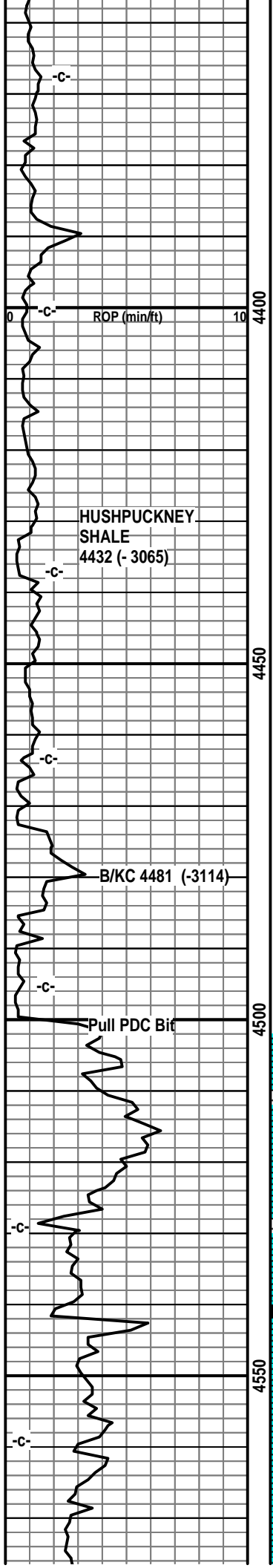
<b>MINERAL</b>	Gyp	<b>FOSSIL</b>	Ostra	Sltstrg
Anhy	Hvymin	Algae	Pelec	Ssstrg
Arggrn	Kaol	Amph	Pellet	<b>TEXTURE</b>
Arg	Marl	Belm	Pisolite	Boundst
Bent	Minxl	Bioclst	Plant	Chalky
Bit	Nodule	Brach	Strom	Cryxln
Brecfrag	Phos	Bryozoa	<b>STRINGER</b>	Earthy
Calc	Pyr	Cephal	Anhy	Finexln
Carb	Salt	Coral	Arg	Grainst
Chtdk	Sandy	Crin	Bent	Lithogr
Chtlt	Silt	Echin	Coal	Microxln
Dol	Sil	Fish	Dol	Mudst
Feldspar	Sulphur	Foram	Gyp	Packst
Ferrpel	Tuff	Fossil	Ls	Wackest
Ferr		Gastro	Mrst	
Glau		Oolite		









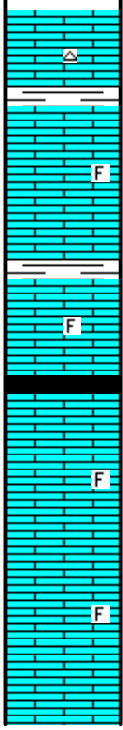


HUSHPUCKNEY  
SHALE  
4432 (- 3065)

B/KC 4481 (-3114)

Pull PDC Bit

4400  
4450  
4500  
4550



Ls, cream-tan fxln, dense, blocky, trace of tan chert

Shale, grey, dark grey

Ls, cream, tan-white, fxln, dense, slightly foss.

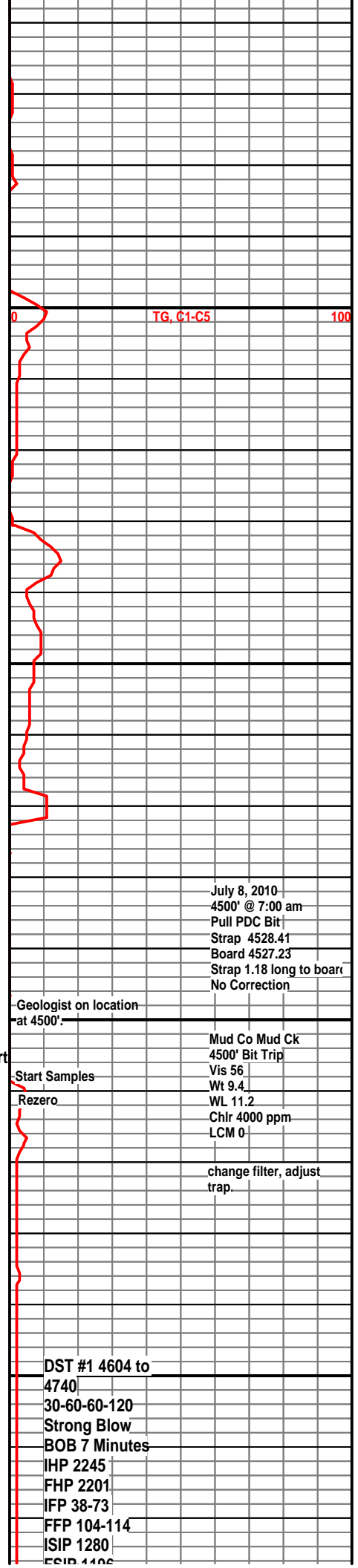
Shale, grey, dark green.

Ls, cream-white, fxln, dense, slightly chalky, foss.

Shale, grey-black, slightly carb.

Ls, tan-white, fxln, dense, slightly foss

Ls, tan, cream, fxln, slight chalky, trace foss. ool.



TG, C1-C5

July 8, 2010  
4500' @ 7:00 am  
Pull PDC Bit  
Strap 4528.41  
Board 4527.23  
Strap 1.18 long to board  
No Correction

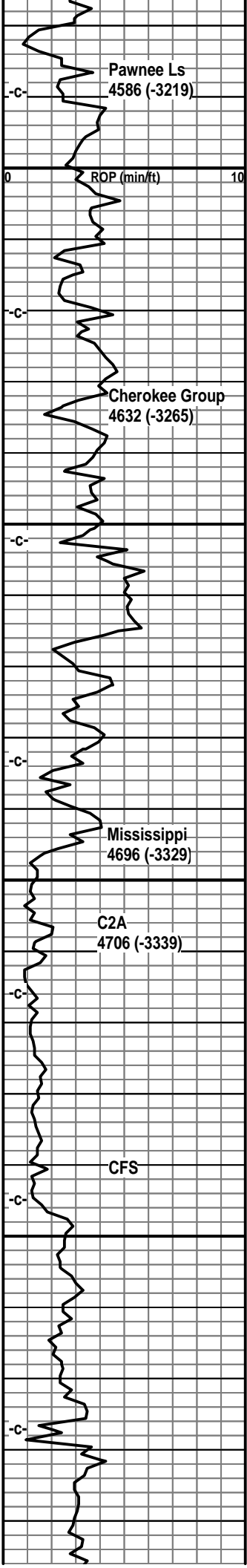
Geologist on location  
at 4500'.

Mud Co Mud Ck  
4500' Bit Trip  
Vis 56  
Wt 9.4  
WL 11.2  
Chlr 4000 ppm  
LCM 0

Start Samples  
Rezero

change filter, adjust  
trap.

DST #1 4604 to  
4740  
30-60-60-120  
Strong Blow  
BOB 7 Minutes  
IHP 2245  
FHP 2201  
IFP 38-73  
FFP 104-114  
ISIP 1280  
ESIP 1100



Shale, grey-black, carb, abundant ga

Ls, cream, tan, fxln, dense, trace of pin point porosity, no visible shows, no odor, dull min. fluor.

Ls, tan, tan-brown, fxln, dense, slightly foss

Shale, grey, dark grey-black.

Ls, tan, cream-tan, fxln, dense, slightly foss., trace tan chert.

Shale, grey-black, carb., gassy

Ls, cream-white to tan-white, fxln, dense, slightly foss., trace of chalky ls

Shale, light grey, silty to sandy.

Ls, tan-white, fxln, dense, slightly sandy in part, trace of foss.

Ls, as above white-cream chert with some calcite inclusions.

Shale, grey-black, carb.

Ls, cream-white, fxln, dense, chalky in part.

Shale, green, traces of pale green chert

Ls, cream, tan-white, fxln, traces of tan chert.

Shale, light grey to green.

Ls, tan to cream-white, fxln, traces of smokey white chert, dull fluor. no odor. Abundant shales

● Chert, white to off-white, fresh, sharp with slight edge staining, slightly weathered grading to weathered, tripolitic, few scattered small vugs, mostly pin point type porosity, good light brown scattered staining, fair odor, dull milky fluor in part, scattered show of light brown oil, some free oil on tray.

● Chert. white to tan-white, milky, sharp, some edge staining, weathered with pin point porosity, fair odor, fair brown staining, chert grading fresh with depth. Some green grey shales present.

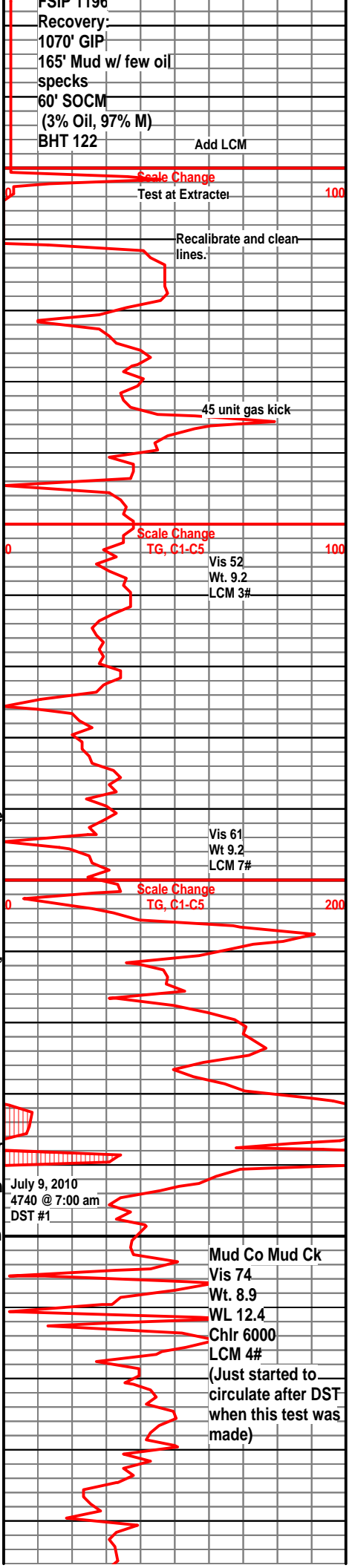
● Chert, white to milky white, sharp to weathered, fair spotted staining along edges with pin point porosity, slight show of medium brown oil, dull min fluor, slight odor.

● Ls., tan-white, fxln, dense, abundant milky white with chert, slight staining on chert edge.

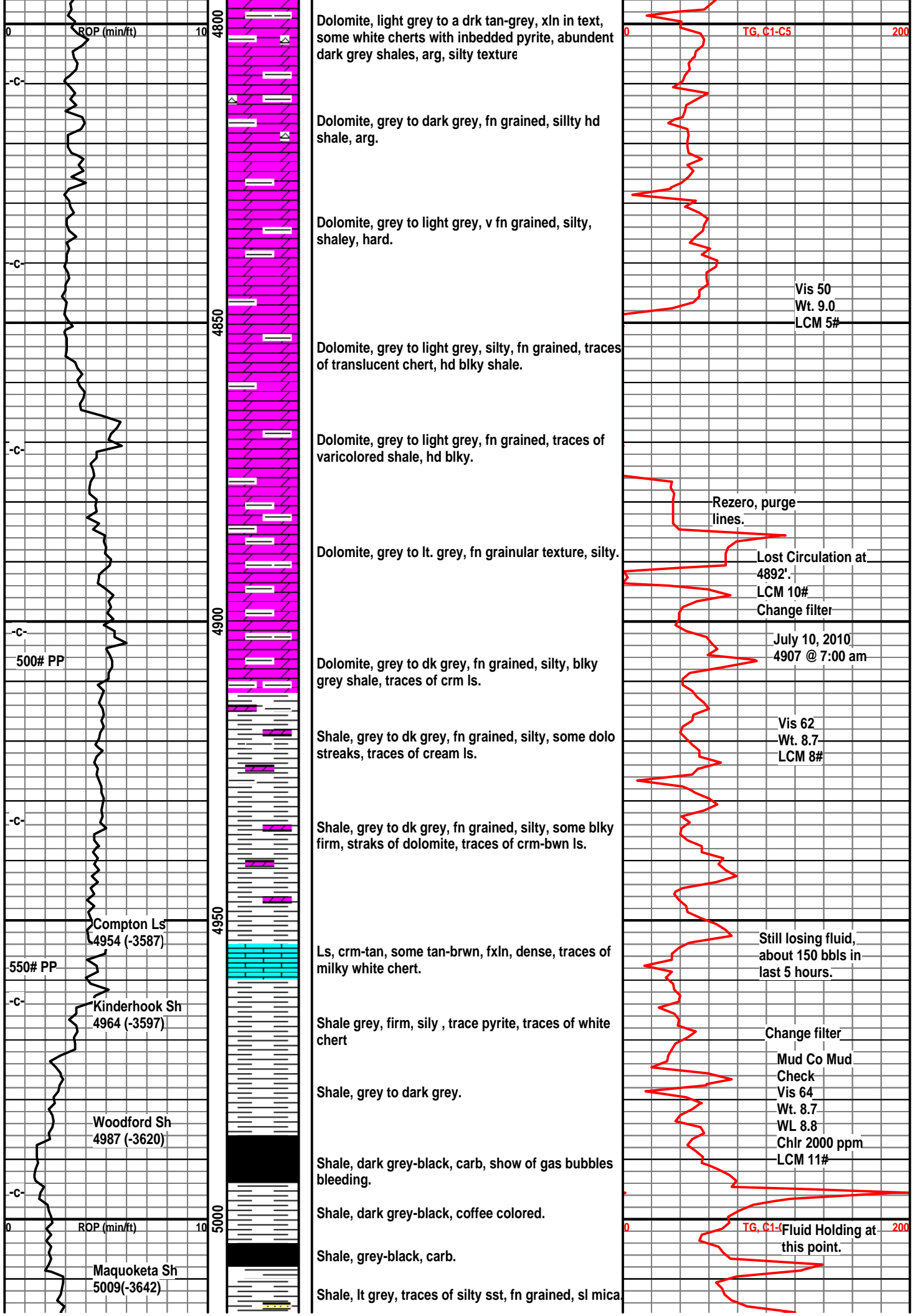
● Ls, tan-white, fxln, dense, slightly dolomitic, abundant white to off-white cherts, very slight staining.

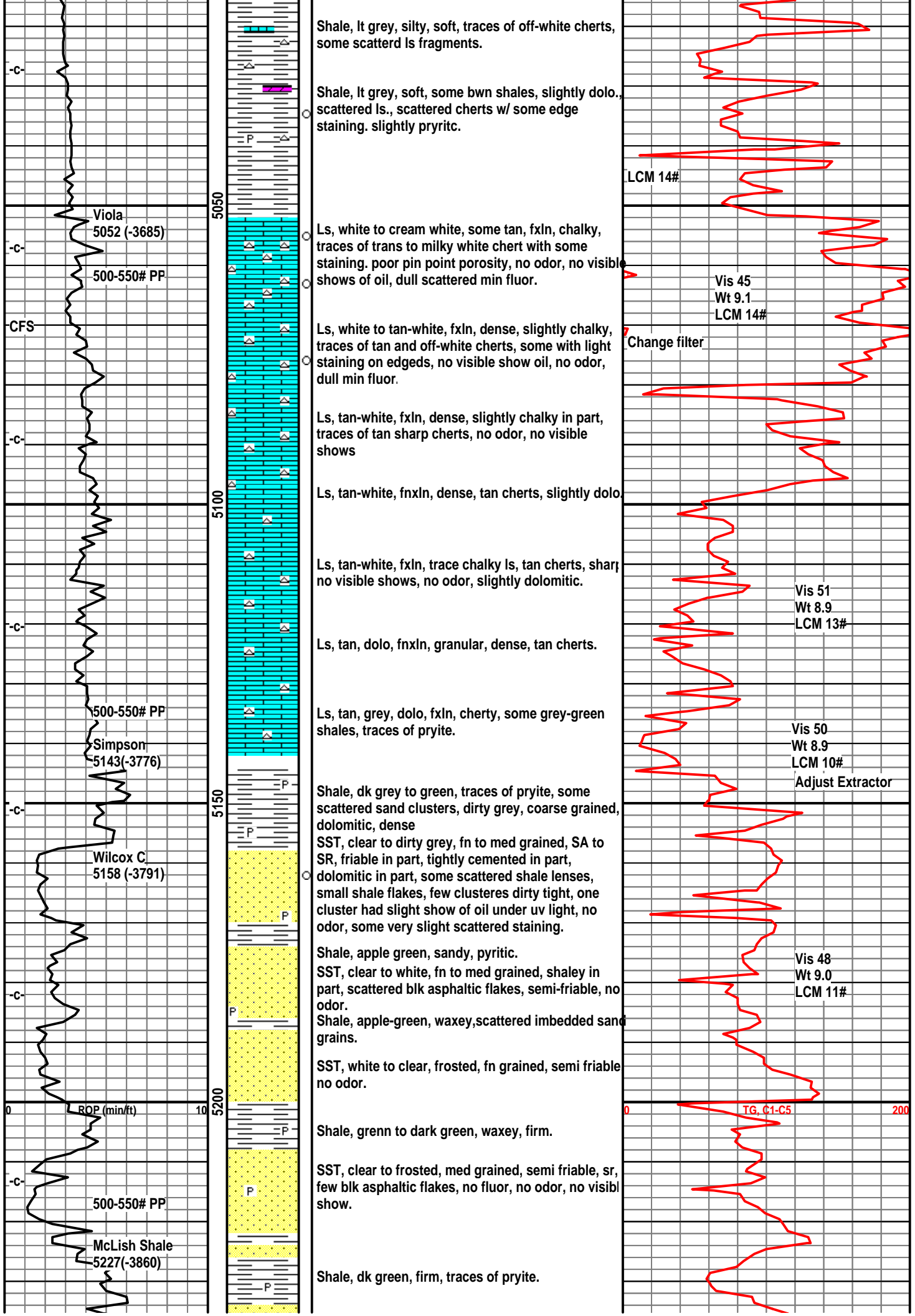
○ Chert, white to milky white, sharp, fresh, very light spotted stain, no odor.

Dolomite, tan, grey-white, xln, dense, slightly cherty, glau., some vari-colored shales present.









Shale, lt grey, silty, soft, traces of off-white cherts, some scattered ls fragments.

Shale, lt grey, soft, some bwn shales, slightly dolo., scattered ls., scattered cherts w/ some edge staining. slightly pryritic.

Ls, white to cream white, some tan, fxln, chalky, traces of trans to milky white chert with some staining. poor pin point porosity, no odor, no visible shows of oil, dull scattered min fluor.

Ls, white to tan-white, fxln, dense, slightly chalky, traces of tan and off-white cherts, some with light staining on edgeds, no visible show oil, no odor, dull min fluor.

Ls, tan-white, fxln, dense, slightly chalky in part, traces of tan sharp cherts, no odor, no visible shows

Ls, tan-white, fnxln, dense, tan cherts, slightly dolo

Ls, tan-white, fxln, trace chalky ls, tan cherts, sharp no visible shows, no odor, slightly dolomitic.

Ls, tan, dolo, fnxln, granular, dense, tan cherts.

Ls, tan, grey, dolo, fxln, cherty, some grey-green shales, traces of pryite.

Shale, dk grey to green, traces of pryite, some scattered sand clusters, dirty grey, coarse grained, dolomitic, dense

SST, clear to dirty grey, fn to med grained, SA to SR, friable in part, tightly cemented in part, dolomitic in part, some scattered shale lenses, small shale flakes, few clusteres dirty tight, one cluster had slight show of oil under uv light, no odor, some very slight scattered staining.

Shale, apple green, sandy, pyritic. SST, clear to white, fn to med grained, shaley in part, scattered blk asphaltic flakes, semi-friable, no odor.

Shale, apple-green, waxey, scattered imbedded sand grains.

SST, white to clear, frosted, fn grained, semi friable no odor.

Shale, grenn to dark green, waxey, firm.

SST, clear to frosted, med grained, semi friable, sr, few blk asphaltic flakes, no fluor, no odor, no visibl show.

Shale, dk green, firm, traces of pryite.

Viola 5052 (-3685)

500-550# PP

CFS

500-550# PP

Simpson 5143(-3776)

Wilcox C 5158 (-3791)

500-550# PP

McLish Shale 5227(-3860)

LCM 14#

Vis 45  
Wt 9.1  
LCM 14#

Change filter

Vis 51  
Wt 8.9  
LCM 13#

Vis 50  
Wt 8.9  
LCM 10#

Adjust Extractor

Vis 48  
Wt 9.0  
LCM 11#

TG, C1-C5

200

ROP (min/ft)

