

**Randall Kilian Corporation**  
Geologist



**Certified Petroleum  
Geologist #3351  
License #224**

P.O. Box 26  
Hays, Kansas 67601-0026  
Phone: 785-628-6061  
Cell: 785-635-1349

## GEOLOGIST'S WELL REPORT

COMPANY RACH OIL PRODUCTION (31569)

WELL Dellenbach #1

FIELD Locelela

LOCATION (legal) Ap. SW SE NE NE  
(1000' FNL & 620' FEL)  
Section 27 TWP 6S RGE 20W

(Map) 10 mi S & 2 mi E of Logan, Ks.

COUNTY Rooks STATE Kansas

ELEVATION: 2123' K.B., 2116' G.L.

Depths measured from Kelly Bushing

A. P. I. NUMBER 15-163-23896

GEOLOGY BY Randall Kilian

## PERTINENT WELL DATA

CONTRACTOR American Eagle Drilling LLC (33493)

RIG #2 HYDRAULICS D-375 6x14x60  
(Todd Mersch TP)

DRILL PIPE 4 1/2" X-H COLLARS 6" 14 (468')

CASING: SURFACE 8 5/8" @ 207' w/ 150 sx Common

PRODUCTION 5 1/2" @ 3672' w/ 550 sx ALHD

DRILLING FLUID: COMPANY Andy's Mud & Chemical Co.  
(Kirk Werth)

TYPE: Chemical & Drispac

REMARKS: Full service Steel Pits

DRILL STEM TESTS: COMPANY Trilobite Testing Inc.  
(Ray Schwager)

NUMBER OF TESTS Two (2)

ELECTIC LOGS: COMPANY Pioneer Log-Tech Inc.

DETAIL (5") 3100' - RTD

TYPE DI, Comp N-D, Micro

DRILLING TIME FROM 3075' TO RTD

SAMPLE TIME FROM 3100' TO RTD

SUPERVISION FROM 3100' TO RTD

VERTICAL DEVIATION 1/2" @ 219', 3/4" @ 1719', 1/2" @ 3420', 1" @ 3675'

PLUGGING REPORT 30 sx Rat

RESERVE PIT 200 bbls., Chl. 8,000



## DRILL STEM TESTS

NO	INTERVAL	IFP/TIME	ISIP/TIME	FFP/TIME	FSIP/TIME	IHP/FHP	RECOVERY
1	Hor-D 3315- 3420'	56# 56# 5"	809# 60"	56# 56# 30"	447# 30"	1641# 1688#	5' Mud w/ s.o.
2	LKc H-L 3466- 3560'	43# 60# 5"	801# 60"	67# 168# 60"	782# 90"	1680# 1639#	840' GIP 401' M,G,Oil 34°
3							
4							
5							
6							
7							
8							

MUD RECORD						
CHK	DEPTH	WT	VIS	FIL	CHL	YP
1	3026'					
2	3088'	8.7	56			
3	3225'	8.9	52			
4	3288'	9.1	52	8.8	800	13
5	3410'	9.2	54			
6	3494'	9.4	47	8.8	1k	16
7	3580'	9.2	50			
8	3675'	9.3	48	8.0	1.1k	16
9						
10						
11						

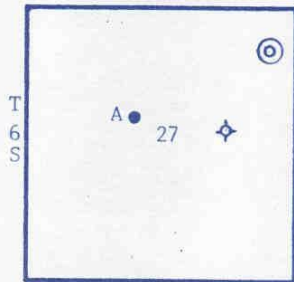
BIT RECORD						
NO	SIZE	MAKE	TYPE	DEPTH	FEET	HOURS
1	12 3/4"	JZ	RR	219'	219'	3
2	7 7/8"	JZ	QX20J	3675'	3456'	62 1/2
3						
4						
5						
6						
7						

Displace  
LCM 2#  
LCM 1#  
LCM 3#  
LCM 2# \$7037



# FORMATION TOPS & STRUCTURAL GEOLOGY

R 20 W



**REFERRED TO:**

- A: BACH OIL PRODUCTION
- Lela #3 NW SE SE NW 27
- B: \_\_\_\_\_
- C: \_\_\_\_\_
- D: \_\_\_\_\_
- E: \_\_\_\_\_

STRATIGRAPHIC MARKERS	SUBJECT WELL		DATUM	STRUCTURAL POSITION				
	SAMPLE	E. LOG		A	B	C	D	E
Anhydrite	1716'	1714'	+ 409	+ 405				
Base	1747'	1745'	+ 378	+ 376				
Topeka	3117'	3116'	- 993	- 996				
Heeb. Sh.	3317'	3317'	-1194	-1191				
Tor.	3345'	3339'	-1216	-1219				
Lans.	3356'	3354'	-1231	-1231				
BKe.	3558'	3558'	-1435	-1430				
Arb. (RW)	3594'	3594'	-1471	-1466				
Arbuckle	3609'	3608'	-1485	-1479				
TD	3675'	3676'	-1553	-1524				

Pipe strap 1.24' short.

\*Structural position of subject well as compared to referred well.

**SUMMARY**

The Dellenbach #1 well was drilled with American Eagle Drilling tools rig #2 beginning 9-21-10 and drilling was completed 9-27-10.

The drillsite was located via a 3-D seismic survey

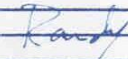
The well ran flat to about 6' low structurally to the Lela #3. No upper LKc zones developed quality reservoirs. However, the LKc J zoned developed and DST'ed gas & oil.

Oil shows were encountered in several LKc zones and Arbuckle.

Based upon all data, 5 1/2" casing was set and cemented to further test and produce the well.

Recommended perfs: LKc J 3519-25'.  
Before abandoning: Arb. 3613-15, LKc I 3503-06', F 3435-37', F 3421-24', and Toronto 3339-42'.

Respectfully,

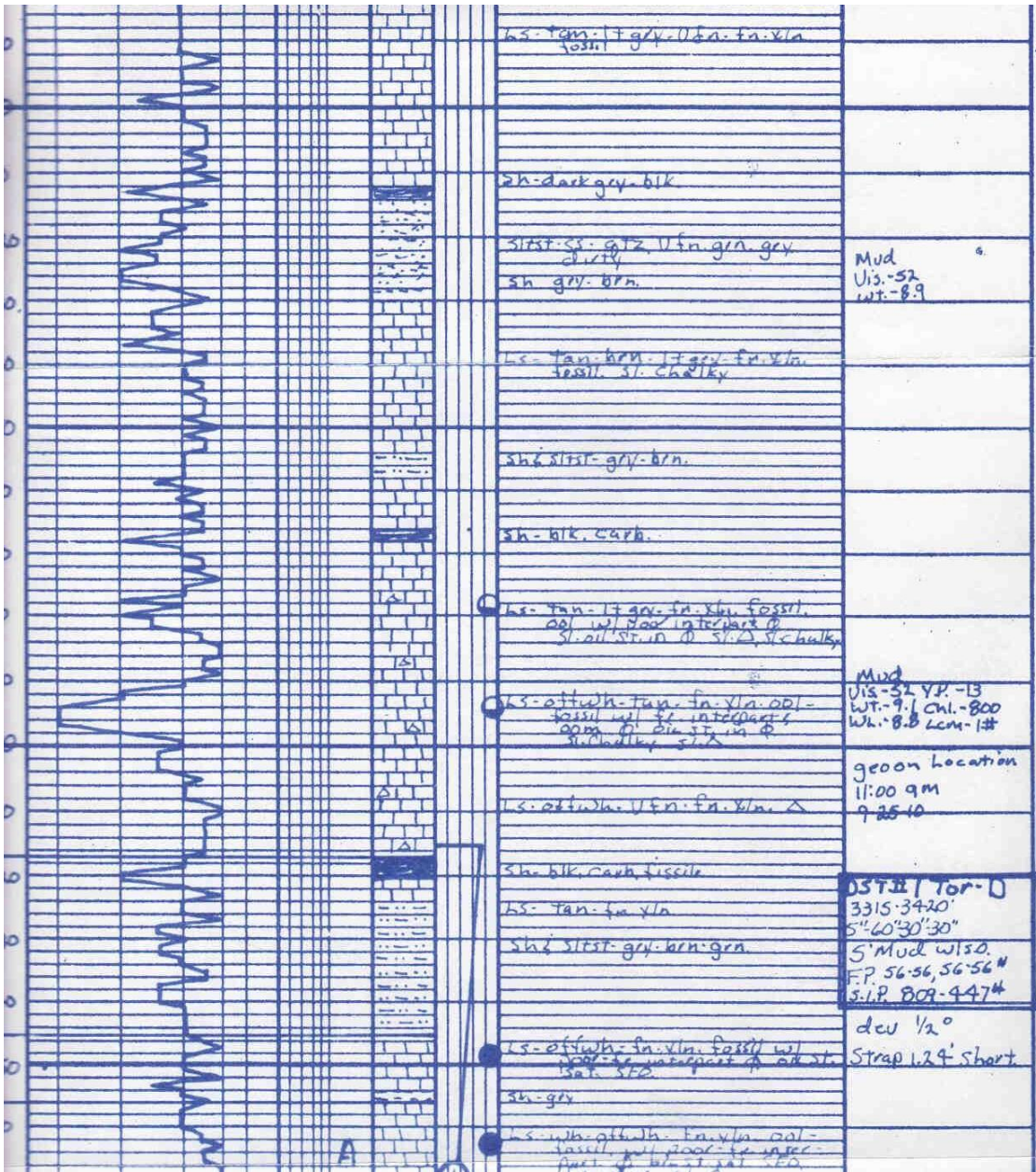


Randall Kilian









ls - tan. + gr. - 0. fa. - fa. - via  
fossil

sh - dark grey - blk

sltst. gr. - qtz. - v. fr. - gr. - grey  
sh - gr. - brn.

Mud  
Vis. - 52  
wt. - 8.9

ls - tan. - brn. - 1.7 gr. - fr. - via  
fossil. sl. ch. ch. ch.

sh - sltst. - grey - brn.

sh - blk. carb.

ls - tan. - 1.7 gr. - fr. - via. fossil.  
oil w/ poor interpart. sl. oil str. in sh. ch. ch. ch.

Mud  
Vis. - 52 VP. - 13  
wt. - 9.1 chl. - 800  
wt. - 8.8 lcm. - 1#

ls - attw. - tan. - fa. - via. oil - fossil w/ poor interpart. oil str. in sh. ch. ch. ch.

geoon location  
11:00 am  
9.25.10

ls - attw. - v. fr. - fr. - via. A

sh - blk. carb. fissile

DST # 1 Top-D  
3315.3420'  
5° 60' 30' 30"  
5" Mud w/so.  
F.P. 56-56, 56-56"  
S.I.P. 809-447#

ls - tan. - fa. - via

sh - sltst. - grey - brn. - grn.

ls - attw. - fa. - via. fossil w/ poor interpart. oil str. in sh. ch. ch.

dev 1/2°  
Strap 1.29' short

sh - gr.

ls - wh. - attw. - fa. - via. oil - fossil w/ poor interpart. oil str. in sh. ch. ch.







