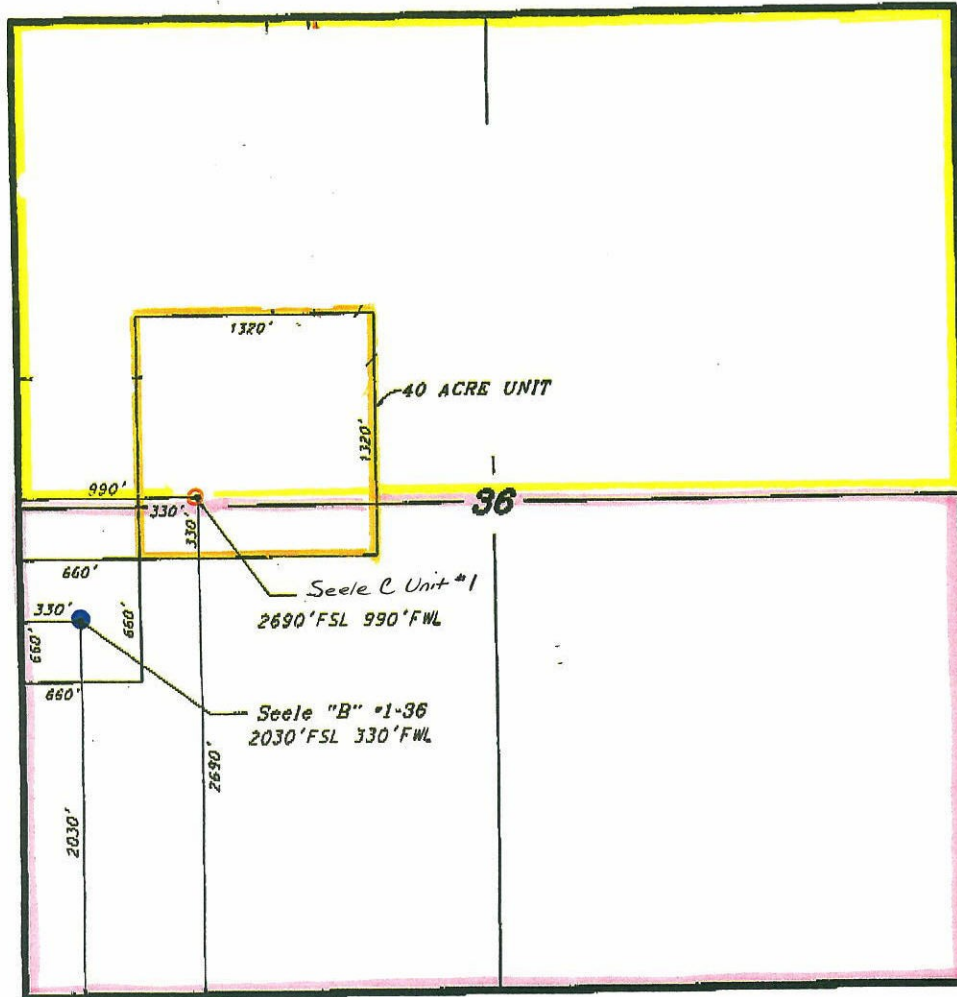


RUSSELL OIL, INC.  
(LEASE UNIT SKETCH)  
SECTION 36, T10S, R34W  
THOMAS COUNTY, KANSAS

\*Ingress and egress to location as shown on this plat is per usage only and may not be legally opened for public use. Contact landowner, tenant and county road department for access.



- Proposed 40 Acre unit
- Potential locations (Seele C Unit #1)
- Seele B #1-36 Producing well
- Existing Seele B Lease (HBP)
- Seele C leasehold

Proposed Unit

From SW Corner of Sec. 36: North 2360', thence East 660' to POB, thence North 1320', thence East 1320', thence South 1320', thence West 1320' to POB.

\* Controlling data is based upon the best maps and photographs available to us and upon a regular section of land containing 640 acres.

\* Approximate section lines were determined using the normal standard of care of oilfield surveyors practicing in the state of Kansas. The section corners, which establish the precise section lines, were not necessarily located, and the exact location of the driltsite location in the section is not guaranteed. Therefore, the operator securing this service and occupying this plot and all other parties relying thereon agree to hold Central Kansas Oilfield Services, Inc., its officers and employees harmless from all losses, costs and expenses and said entities released from any liability from incidental or consequential damages.

\* Elevations derived from National Geodetic Vertical Datum.

Date \_\_\_\_\_