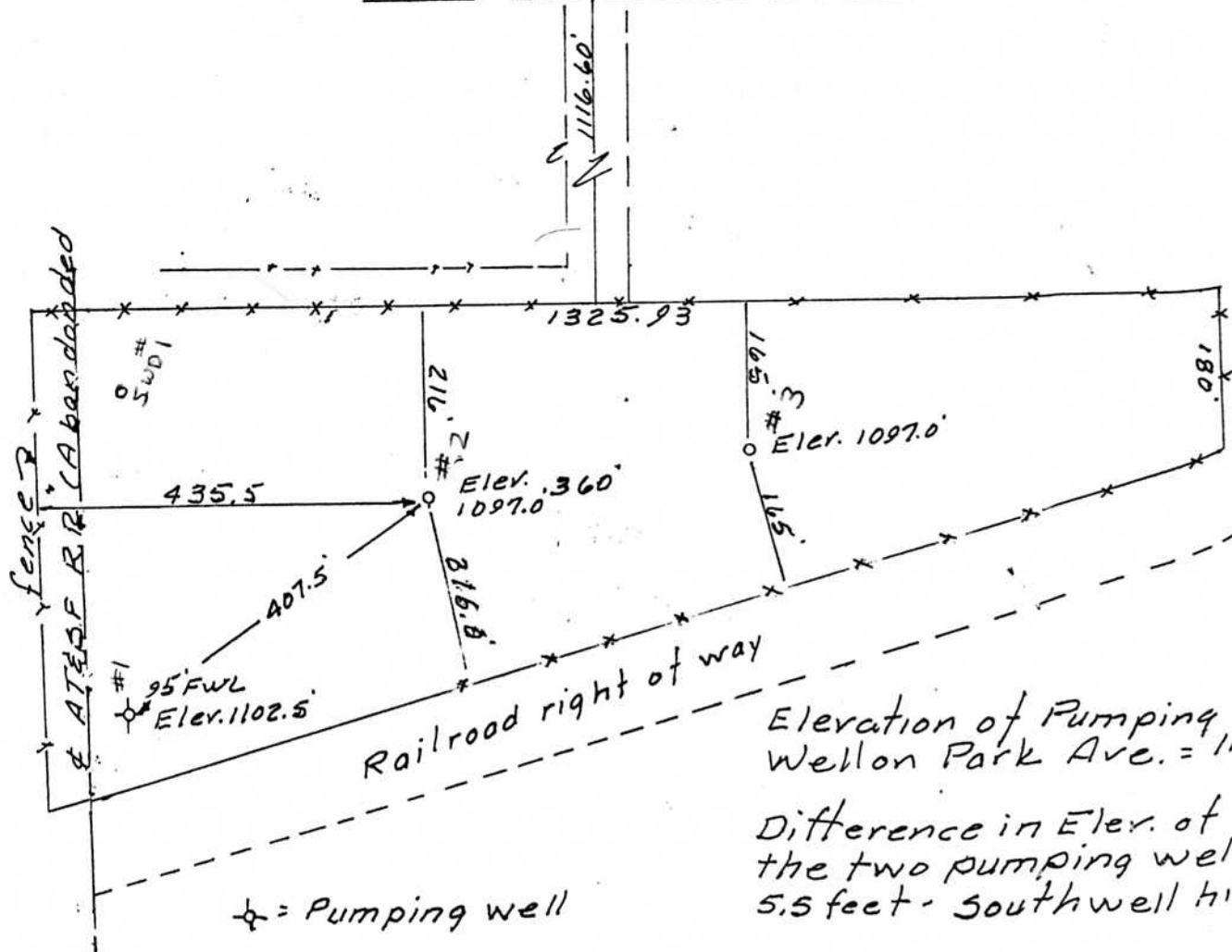


TRIPLE SEVEN ENERGY
CORP.

Severy, Greenwood County
Kansas

North line 5 1/2 Sec 8 7



Elevation of Pumping
Well on Park Ave. = 1108'
Difference in Elev. of
the two pumping wells:
5.5 feet - Southwell high

⊕ = Pumping well
○ = Stake for drilling
site.

I, Lloyd J. Dobler, a duly Registered Land Surveyor
in the State of Kansas, certify that the accompany
plat is a true and correct representation of a survey
to located one existing well and two drilling sites
for Triple Seven Energy Corporation on 7 June 1982.

RECEIVED
STATE CORPORATION COMMISSION
DEC 09 1982
CONSERVATION DIVISION
Wichita, Kansas



Lloyd J. Dobler