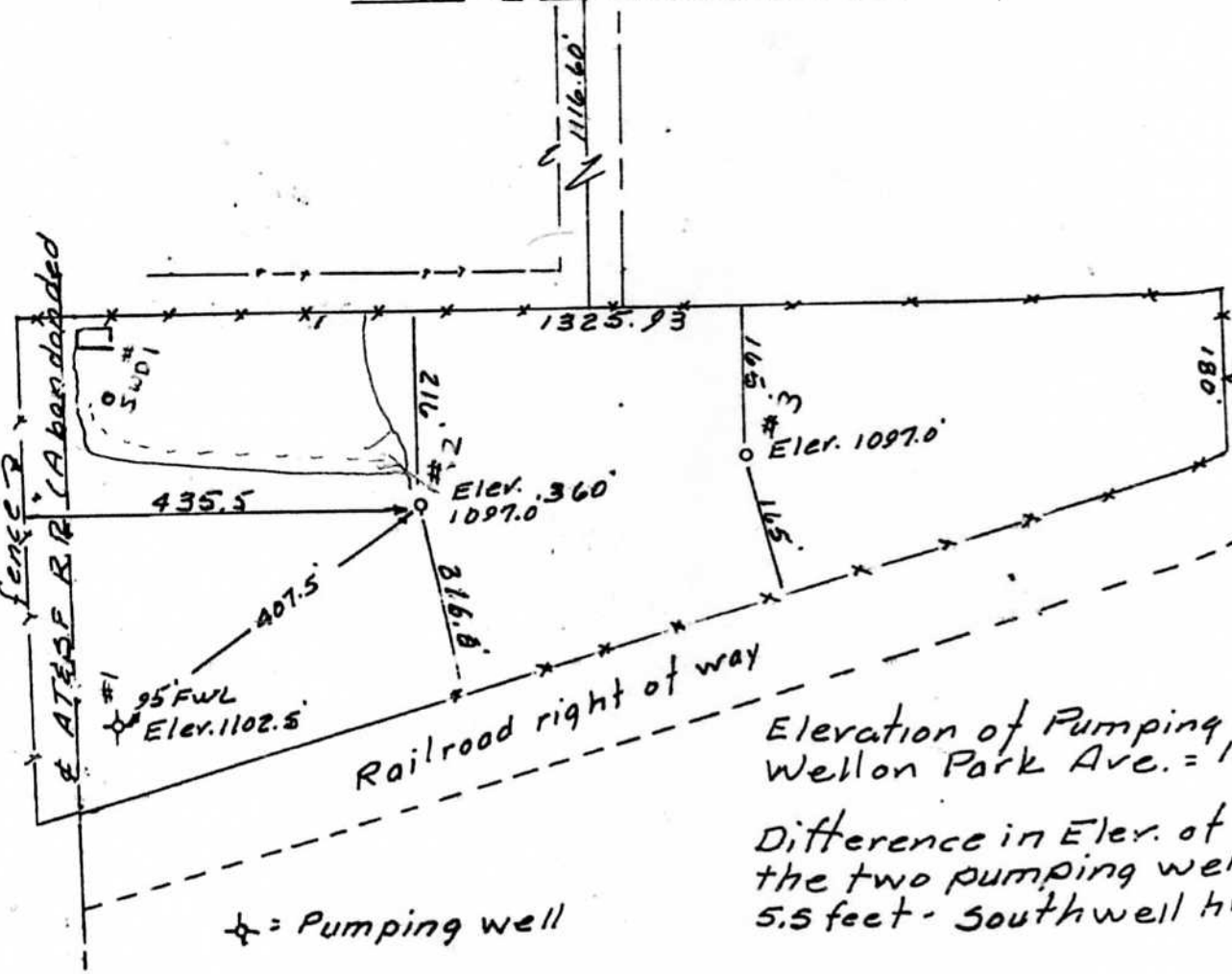


Robert L. Sharp
 Severy, Greenwood County
 Kansas

North line 5 1/2 sec 0 7



Elevation of Pumping Well on Park Ave. = 1100'
 Difference in Elev. of the two pumping wells = 5.5 feet - Southwell high

* = Pumping well
 o = Stake for drilling site.

I, Lloyd J. Dobler, a duly Registered Land Surveyor in the State of Kansas, certify that the accompanying plat is a true and correct representation of a survey to locate one existing well and two drilling sites for Triple Seven Energy Corporation on 7 June 1982.

Lloyd J. Dobler



RECEIVED
 STATE COMMISSION
 DEC 09 1982
 CONSERVATION DIVISION
 Wichita, Kansas