

# ADVANTAGE ELEVATIONS

OIL FIELD SURVEYORS

BOX 8604 - PRATT, KS 67124  
(620) 672-6491

1118101  
INVOICE NO.

N-10 EXPLORATION

OPERATOR

B 4

NO

Medicine River Ranch

FARM

Barber

COUNTY

15

S

34S

T

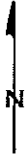
11W

R

SW SE NW

LOCATION

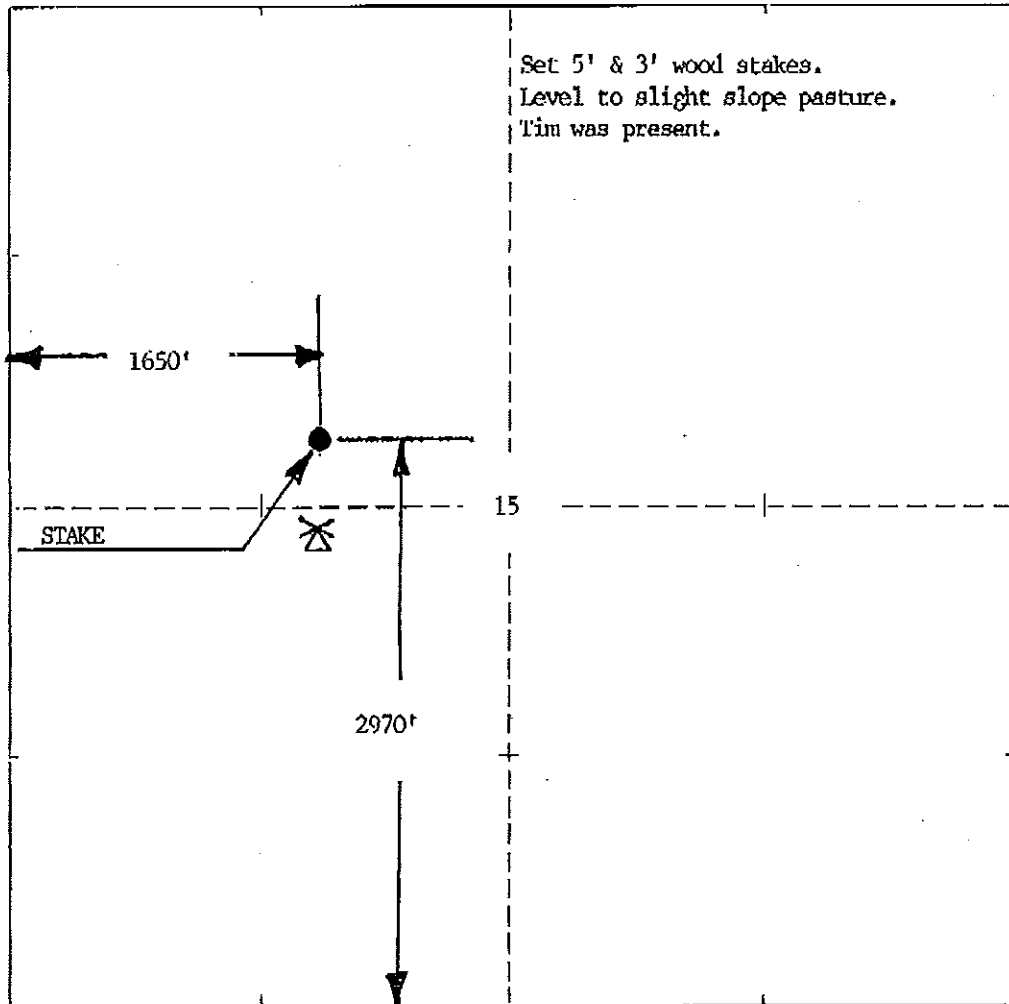
ELEVATION: 1335'GR



N-10 EXPLORATION  
PO Box 195  
Attica, KS 67009-0195

AUTHORIZED BY: Randy/Tim

SCALE: 1" = 1000'



Staked 11/18/10

