



Scale 1:240 (5"=100') Imperial  
Measured Depth Log

Well Name: Schiller 1-23  
Location: Sec 23-17s-12w Barton co Kansas  
License Number: API 15-009-25453-00-00  
Spud Date: 7-24-2010  
Surface Coordinates: 1980 FNL, 1980 FWL  
Region: WILDCAT  
Drilling Completed: 07/29/2010

**Bottom Hole Coordinates:**

Ground Elevation (ft): 1857'      K.B. Elevation (ft): 1867'  
Logged Interval (ft): 2220'      To: 3470'      Total Depth (ft): 3470'  
Formation: Lansing, Arbuckle  
Type of Drilling Fluid:

Printed by WellSight Log Viewer from WellSight Systems 1-800-447-1534 [www.WellSight.com](http://www.WellSight.com)

**OPERATOR**

Company: Samuel Gary Jr, & Assoc.  
Address: 1515 Wynkoop, Ste.# 700  
Denver, Colo. 80202  
Geo: Claton Camozzi

**GEOLOGIST**

Name: RODNEY NAPIER/ TYLER SARYERWINNIE  
Company: Earth Tech OGL, Inc.  
Address: PO Box 683  
Hooker, Okla . 73945  
Off. 888-543-8378 Cell: 620-655-2050

**Circulation Report**

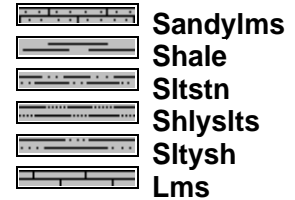
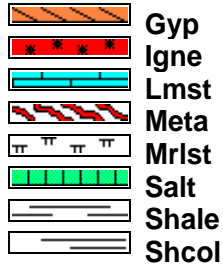
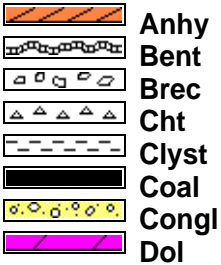
CFS/CTCH 3170 1.5 HR, SHORT TRIP TO COLLORS, CTCH 3170 1 HR, RTN TO DRILLING 6:00 PM, CFS 3103 20 40 60 TOTAL 1.5 HR, CFS 3120 20 40 60 TOTAL 1.5 HR, DROP SURVEY, TOH DST#1 3070-3120', CTCH 1 HR, RIG HAD POWERPLANT DOWN 1/4 HR, RTN TO DRILLING 9:22 AM, STOP @3130 TO INSPECT MUD PUMP, CF 3230 15 MIN, CFS 3340 15 30 45 60, CFS 3353 20 40 60 TOTAL 1.5 HR, CFS 3359 20 40 60, CFS 3367 20 40 60, TOH DST#2 3367, TIH CCH 30 MIN AFTER DST #2, DRILL TO TD 3470, CTCH 1.00 HR, TOH FOR LOGS

### DST information

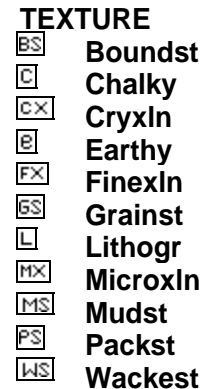
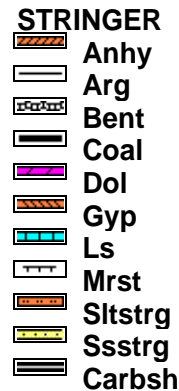
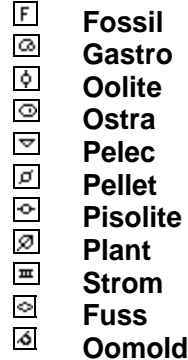
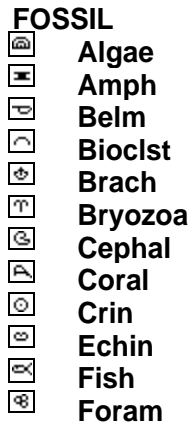
DST # 1, 3070-3120, ANCHOR 50', IFP SURFACE BLOW DIED IN 5 MIN, ISIP NO BLOW, FFP NO BLOW, FSIP NO BLOW, RECOVERY 5 FEET OF MUD W SHOW OF OIL, BHT 102, IH 1453, FIF 22, FFF 24, ISI 52, SIF 18, SFF 21, FSI 31, FH 1432, TIMES: 15, 60, 15, 60

DST#2 3350-3367, ANCHOR 17', IFP STRONG BLOW IN 2 MIN, ISIP NO BLOW BACK, FFP BOB IN 3 MIN, FSIP N BLOW, RECOVERY 60' OF VSOCW, RECOVERY 60' OF MOCW, RECOVERY 800' OF WCO, BHT 109, CLORIDES 18000 PPM, IH 1640, FIF 66, FFF 193, ISI 1133, SIF 199, SFF 394, FSI 1133, FH 1603, TIMES: 10, 60, 20, 90

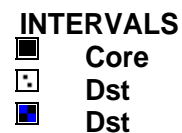
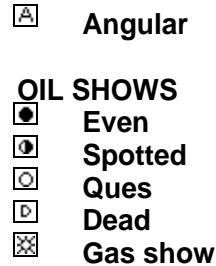
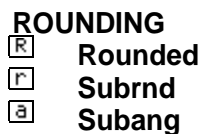
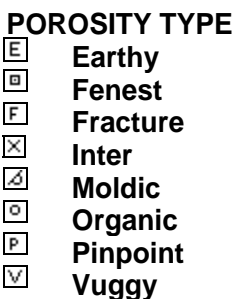
### ROCK TYPES



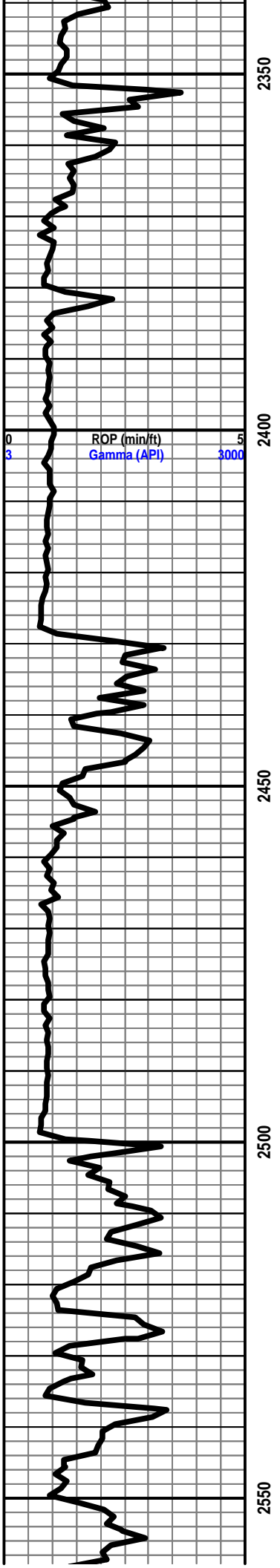
### ACCESSORIES



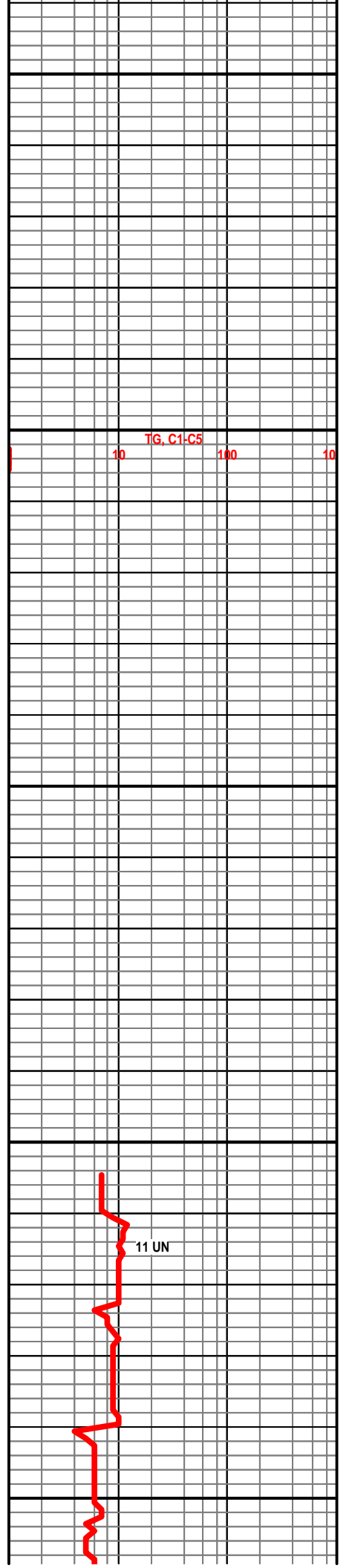
### OTHER SYMBOLS

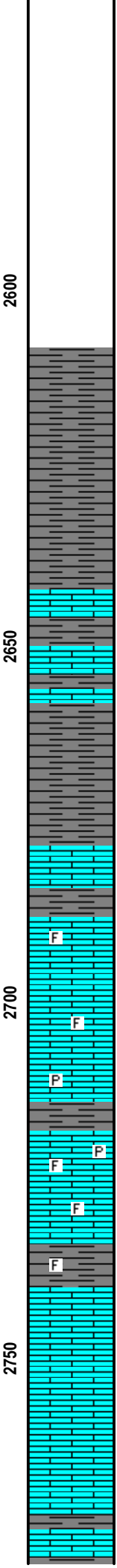
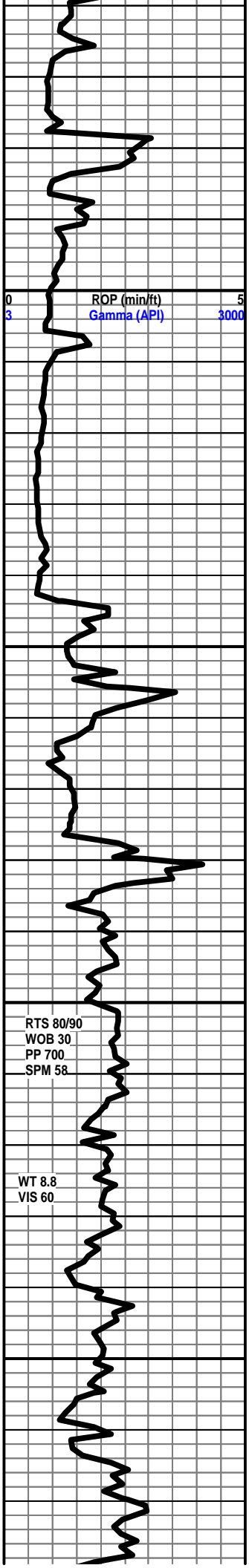






BASE ROOT SHALE 2428' -561'





START 1 MAN LOGGING UNIT 07/26/10

**HOWARD 2644' -777'**

LS DK TN TO TN CRM BUFF HD DN BRITT FN XLN MTX  
TR PYR NODULE IN TRAY DISS GRY SH IP NO FLO NO  
VIS POR NO VIS SHOW

SH DK GRY TO GRY SLTLY FRM SFT SILTY

**TOPEKA 2677' -810'**

LS DK GRY DK TN TO TN HD DN TT CRYPTO XLN MTX  
NO FLO NO VIS POR NO VIS SHOW

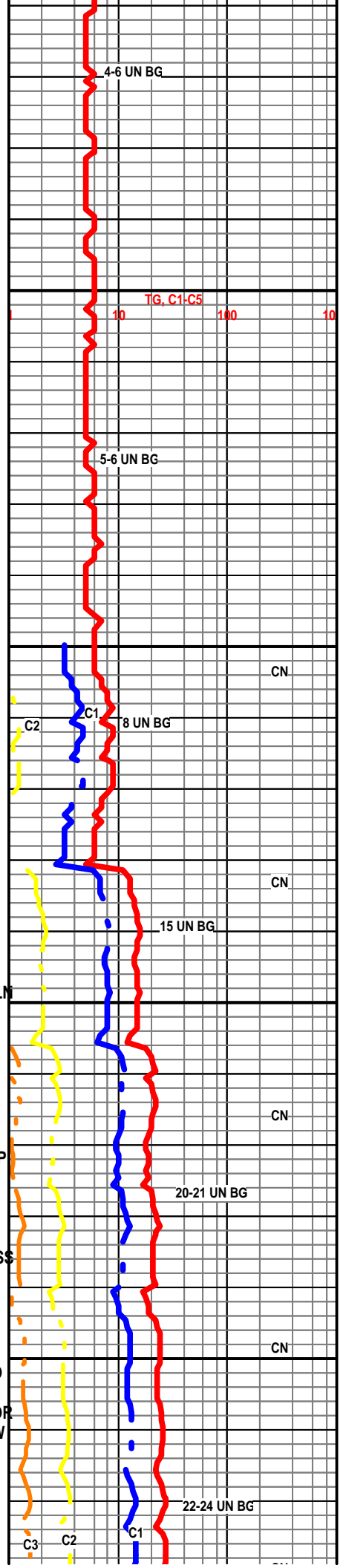
LS GRY TN LT TN BUFF MOTT IP HD DN VVFN TO FN XLN  
MTX TR IMBD FOSS IP SUB-CHLKY IP NO FLO POSS TT  
INTERXLN POR NO CUT NO VIS SHOW

2700' @ 00:01 AM 07/27/10

LS GRY TN LT TN BUFF HD TO FRM BRITT VFN TO FN  
XLN MTX TR IMBD FOSS TR IMBD PYR IP SUB-CHLKY IP  
NO FLO NO VIS POR NO VIS SHOW

SH GRY TO BRN FRM BLKY TO LMY WITH TR IMBD FOSS  
IP

LS GRY TN LT TN CRM BUFF HD TO FRM BRITT VFN TO  
FN XLN MTX RE-XLN MTX SUCRO TXT WITH IMBD V/SM  
LS GRNS TR IMBD CALC XLS IP POSS TT INTERXLN POR  
TO TR MICRO PP POR IP NO FLO NO CUT NO VIS SHOW

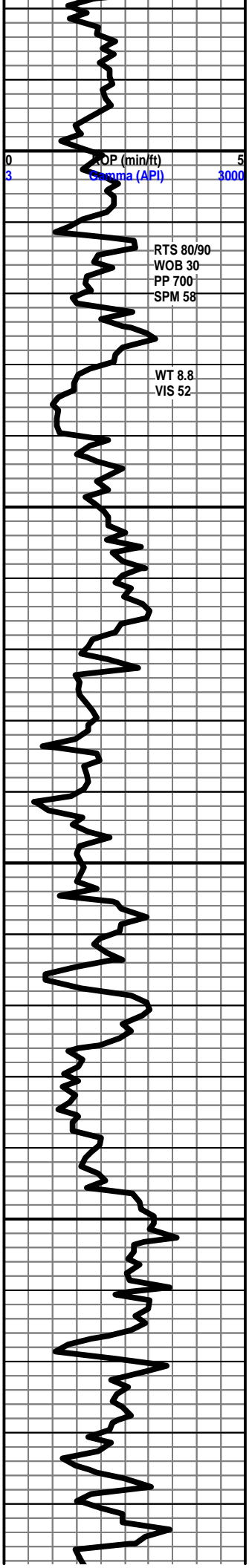


CN

CN

CN

CN



2800

2850

2900

2950



LS DK TN TO TN BUFF MOTT HD DN VVFN TO FN XLN  
MTX TR IMBD GRY SH IP NO FLO NO VIS POR NO VIS  
SHOW

SH BLK CARB

LS DK GRY DK TN HD DN TT CRYPTO XLN MTX NO FLO  
NO VIS POR NO VIS SHOW

SH GRY LT GRY SLTLY FRM BLKY TO WAXY TXT

**LE COMPTON 2840' -973'**

LS TN LT TN BUFF HD DN FN TO TR MD XLN MTX TR  
IMBD FOSS TR LOOSE FOSS IN TRAY NO FLO NO VIS  
POR NO VIS SHOW

SH DK GRY TO GRY FRM BRITT CALC TO LMY THRU

SH BLK CARB

LS TN LT TN BUFF HD TO FRM BRITT VVFN TO FN XLN  
MTX TR LT GRN CHERT IP DISS GRY SH IP NO FLO NO  
VIS POR NO VIS SHOW

SH GRY BRN FRM BLKY GRNY

LS TN LT TN CRM BUFF MOTT HD DN TT CRYPTO TO  
VVFN XLN MTX NO FLO NO VIS POR NO VIS SHOW

LS LT GRY TN LT TN BUFF HD TO FRM BRITT FN TO MD  
XLN MTX IMBD FOSS SUB-CHLKY TO CHLKY TR IMBD  
PYR IP TR IMBD CALC XLS IP ONLY SLT TR LT YLW FLO  
TO NO FLO TR DEAD OIL STAIN ON 1% OF ROCK TR  
POOR VUGGY POR TO PP AND MICRO PP POR POR  
INTERXLN POR FAINT FLUSH CUT POR SHOW

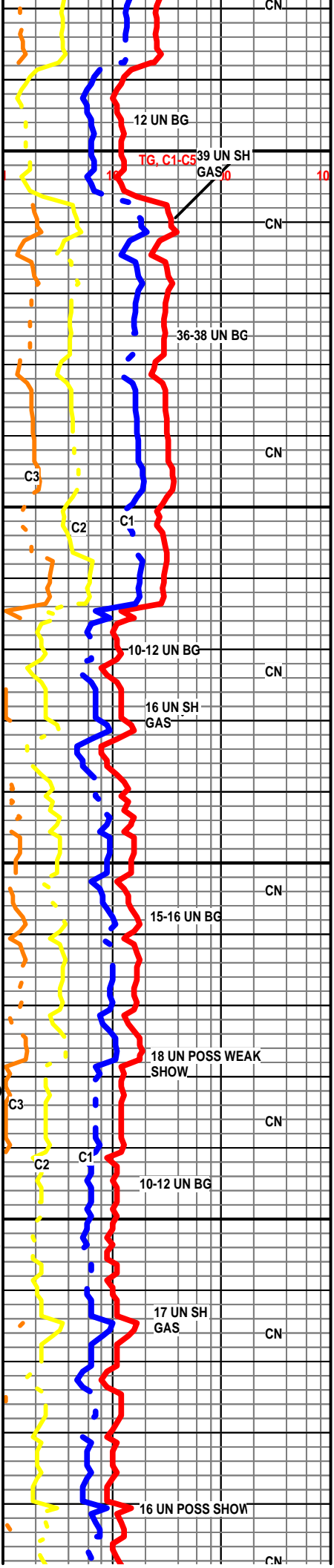
LS DK GRY TO GRY DK TN HD DN CRYPTO XLN MTX NO  
FLO NO VIS POR NO VIS SHOW

**HEEBNER 2964' -1097'**

**TORONTO 2981' -1114'**

LS LT TN CRM BUFF HD TO FRM VVFN OT FN XLN MTX SUCRO TX TR  
IMBD QRTZ XLS IP CHLKY IP TR IMBD FOSS IP SLT TR STAIN ON 4%  
TR LT DULL YLW FLO TO NO FLO NO ODOR POOR TO POSS FAIR  
INTERXLN POR IP ONLY TR MICRO VUGS TO MICRO PP POR VRY  
FAINT LT YLW RING CUT

**DOUGLAS 2995' -1128'**



CN

CN

CN

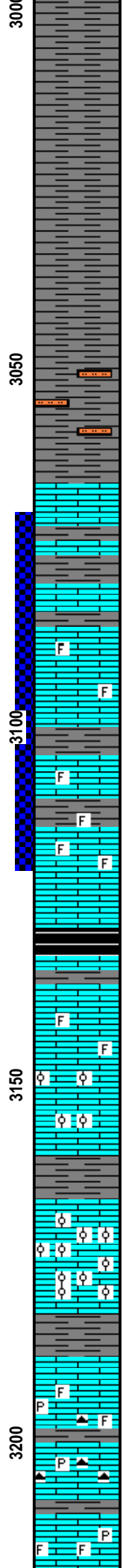
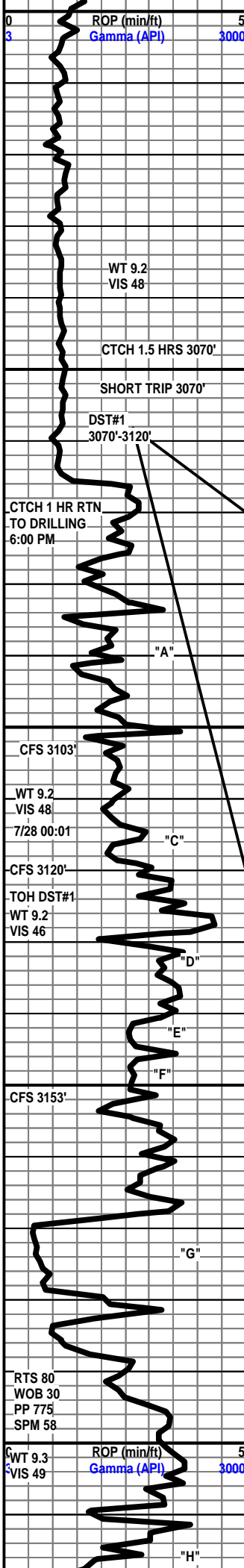
CN

CN

CN

CN

CN



SH GRY SMOOTH SFT SILT)

SH GRY SMOOTH SFT SILTY

SH GRY LT GRY SMOOTH SFT SILTY WITH TR SILSTN IP

**BROWN LIME 3065' -1198'**

LS GRY DK TN TO TN BRN HD DN CRYPTO TO VVFN XLBN MTX DISS GRY SH IP NO FLO NO VIS POR NO VIS SHOW

**LANSING 3086' -1219'**

3086'-3098' LS LT TN DUE TO STAIN CRM BUFF HD TO FRM BRITT VFN TO FN XLN MTX TR IMBD FOSS IP SUCRO TXT TR SM ANG QRTZ XLS CLUSTERS IP FAIR ODOR IN 40,60, MIN SAMPLES STAIN 60% LT YWL TO DULL GLDN YLW FLO THRU POOR FAIR TO GOOD INTERXLN POR SM/MD VUG TO PP POR POSS FRACTURES FAIR TO GOOD INSTANT FLUSH CUT TO STRONG MILKY BLUE STREAM CUT LT YLW GRN RING CUT

**LANSING "X" 3110' -1243'**

3115'-3120' LS CRM BUFF HD DN VVFN TO FN XLN MTX TR RE-XLN MTX IP IMBD FOSS IP POSS TT INTERXLN POR TO NO POR SCATT TR DULL YLW FLO TO NO FLO TR LT OIL STAIN ON TWO ROCKS FAINT TO NO ODOR L FAINT FLUSH CUT TO FAINT LT YLW RING CUT TT SHOW

SH BLK CARB

LS GRY DK BRN TO DK TN HD DN TT CRYPTO TO VVFN XLN MTX NO FLO NO VIS POR NO VIS SHOW

3139'-3145' LS TN LT TN BUFF MOTT HD FRM BRITT FN TO MD XLN MTX IMBD FOSS TR IMBD CHLK IP TR LOOSE FOSS FRG IN TRAY NO FLO NO ODOR NO STAIN NO VIS POR NO CUT NO VIS SHOW

3145'-3154' LS LT TN CRM BUFF OFF WHT HD BRITT CRYPTO TO VFN TO FN XLN MTX RE-XLN MTX IP TR IMBD VR/SM TO SM AND TR MD OOLITES IP TR LMNTD PYR IP NO FLO POSS TT POOR TO NO INTERXLN POR NO ODOR NO STAIN NO CUT NO VIS SHOW

LS BUFF TO LT TAN TO TAN BRITT VVFN TO FN XLN MTX RE-XLN MTX IMBD SM TO MD OOLITES OOMOLDIC THRU IMBD CALC XLS CHLKY POSS TT INTER XLN POR NO FLO NO CUT NO VIS SHOW

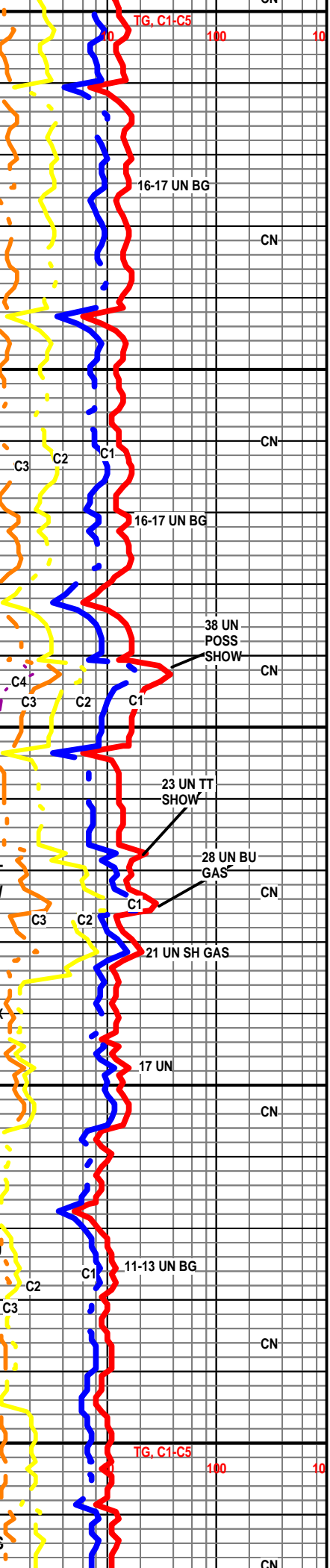
SH GRY SLTLY FRM TO SFT SILTY THRU

LS TN LT TN BUFF TO OFF WHT HD DN TT CRYPTO TO VVFN XLN MTX TR DISS GRY SH IP NO FLO NO VIS POR NO VIS SHOW

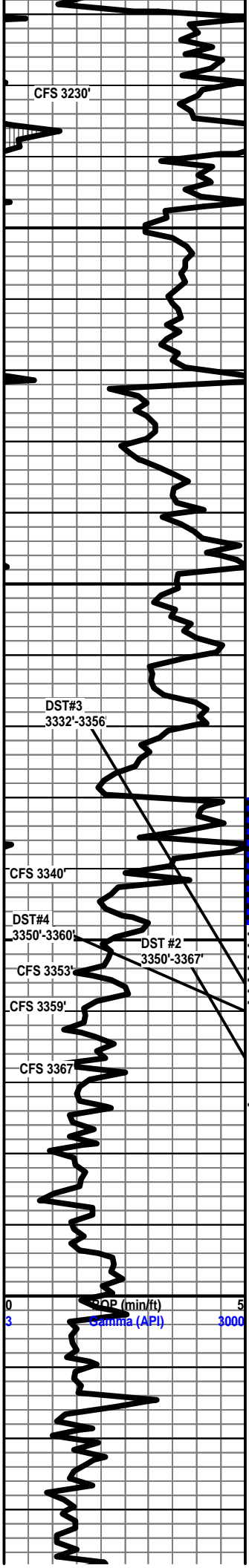
**LANSING "Z" 3210' -1343'**

LS DK TN DK GRY HD TT CRYPTO XLN MTX TR DK GRN CHERT IP TR PYR NODULES IN TRAY NO FLO NO VIS POR NO VIS SHOW

LS LT TN CRM BUFF FRM BRITT FN XLN MTX TR IMBD LS GRNS IP SUCRO TXT TO IMBD FOSS TR IMBD SM







OOLITE OMOLDIC IP CHLKY WITH FRM PIECES CHLK IN TRAY TR IMBD PYR IP SCATT TR LT DULL YLW FLO TO NO FLO TR VUGGY POR TO PP AND MICRO PP POR IP NO ODOR NO CUT NO VIS SHOV

LS DK GRY TO GRY DK TN HD DN TT CRYPTO TO VVFN XLN MTX NO FLO NO VIS POR NO VIS SHOW

SH BRN RED HD BRITT BLKY CALC TO LMY THRU

LS LT GRY TN BUFF HD DN TT CRYPTO TO VVFN XLN MTX TT SUCRO TXT IP TR LT TN TO OPAQUE CHERT IP NO FLO NO VIS POR NO VIS SHOV

**STARK SHALE 3272' -1405'**

SH DK GRY TO GRY HD FRM BRITT SMOOTH SPLNTY

LS CRM BUFF TO OFF WHT HD DN TT CRYPTO XLN MTX THRU TR IMBD FOSS IP NO FLO NO VIS POR NO VIS SHOW

SH DK GRY TO GRY HD FRM BRITT VRY LMY THRU

LS GRY DK TN BUFF HD DN TT CRYPTO XLN MTX TR DISS GRY SH IP TR PYR NODULE IN TRAY NO FLO NO VIS POR NO VIS SHOW

SH GRY BRN TO RED FRM SMOOTH SPLNTY WITH TR CHERT IP

CHERT TN WHT TO OFF WHT MICRO TO CRYPTO XLN MTX TR IMBD OOLITES

**ARBUCKLE 3342' -1475'**

3342'-3350' DOL CRM OFF WHT TO WHT VVFN TO FN XLN MTX RE-XLN MTX IP SUCRO TXT TR LMNTD PYR IP TR IMBD SUB-RND TO RND SS GRNS IP TR IMBD VRY/SM SUB-ANG DOL XLS IP SCATT TR VRY LT DULL YLW FLO 10% POSS TT INTERXLN POR NO CUT NO VIS SHOW

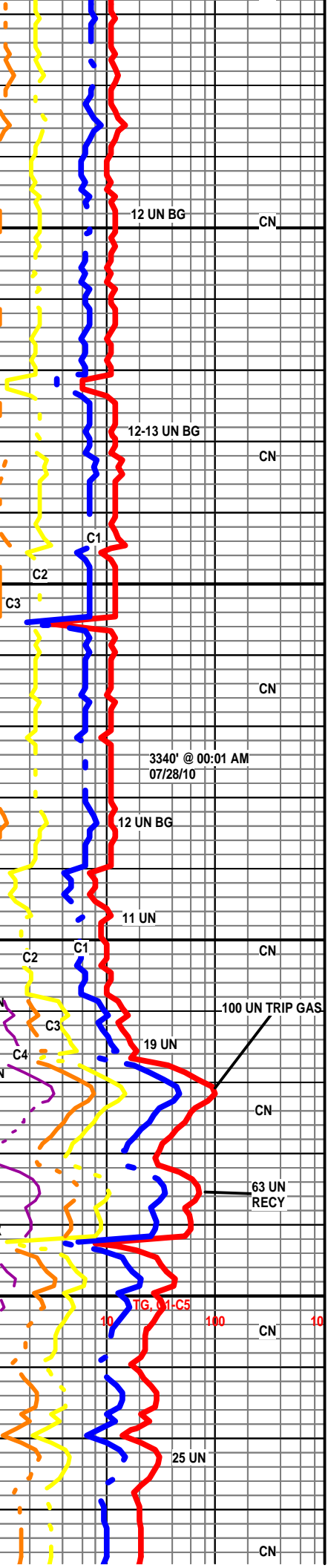
3350'-3359' DOL OFF WHT TO WHT LT GRY FRM BRITT VVFN TO FN TO MD XLN MTX RE-XLN MTX IMBD ANG TO SUB-ANG DOL XLS TR SM/MD QRTZ XLS IMBD IP TR CHLK IP POOR TO TR FAIR TO GOOD INTERXLN POR TO MICRO PP TO PP POR LT DULL YWL FLO 30% NO STAIN NO ODOR NO CUT NO VIS SHOW

3359'-3367' DOL LT TN DUE TO STAIN LT GRY OFF WHT HFRM BRITT FN TO MD XLN MTX RE-XLN MTX CLUSTERS OF SM-MD DOL XLS WITH DOL CMNT TR IMBD CLR TO FRSTY WHT QRTZ XLS DULL GLDN YLW FLO 60% STAIN 40% FAINT TO FAIR ODOR FAIR TO POSS GOOD INTERXLN POR PP AND MICRO PP POR INSTANT FAIR TO GOOD FLUSH CUT TO FAIR STRONG MILKY BLUE STREAM CUT.

3370'-3390' DOL OF WHT TO WHT LT GRY FRM BRITT VVFN TO FN XLN MTX IMBD DOL XLS THRU CHLKY FAIR INTERXLN TO PP POR LT YWL FLO 45% NO STAIN NO ODOR NO CUT NO VIS SHOW

3390'-3310' DOL LT GRY OFF WHT FRM BRITT VVFN TO FN XLN MTX IMBD CLR DOL GRNS THRU TO SUCRO TXT THRU SCATT TR LT YLW FLO TO NO FLO NO ODOR NO STAIN NO CUT NO VIS SHOW

DOL LT GRY OF WHT TO WHT HD TO FRM BRITT CRYPTO TO VVFN TO FN XLN MTX IMBD PYR TR PYR NODULES IN TRAY TR IMBD VR/SM TO SM DOL GRNS IMBD CHLKY NO FLO FAIR INTERXLN TO POSS INTER GRAN POR NO CUT NO VIS SHOW





WOB 30  
RPM80  
PP 77  
SPM 58  
WT 9.3  
VIS 50

CFS/CTCH 1 HR

3450

3500

DOL LT TN LT GRY OFF WHT HD DN BRITT CRYPTO TO  
VVFN TOFN XLN MTX RE-XLN MTX IP IMBD SUB-ANG  
DOL XLS TO TR IMBD QRTZ XLS IP TR IMBD LT GRY CL  
TR IMBD PYR NO FLO NO VIS POR NO VIS SHOW

**RTD 3470' 7/29/2010 8:00 PM**

**CTCH 1 HR**

**TOH FOR LOGS**

**THANK YOU FOR CHOOSING  
EARTHTECH**

**LOG COMPLETED BY RODNEY  
NAPIER AND TYLER SARYERWINNIE**

19-20 UN BG

CN

SAMPLES SECURED BY RODNEY  
NAPIER AND WILL BE DELIVERED TO  
THE KGS AS REQUESTED