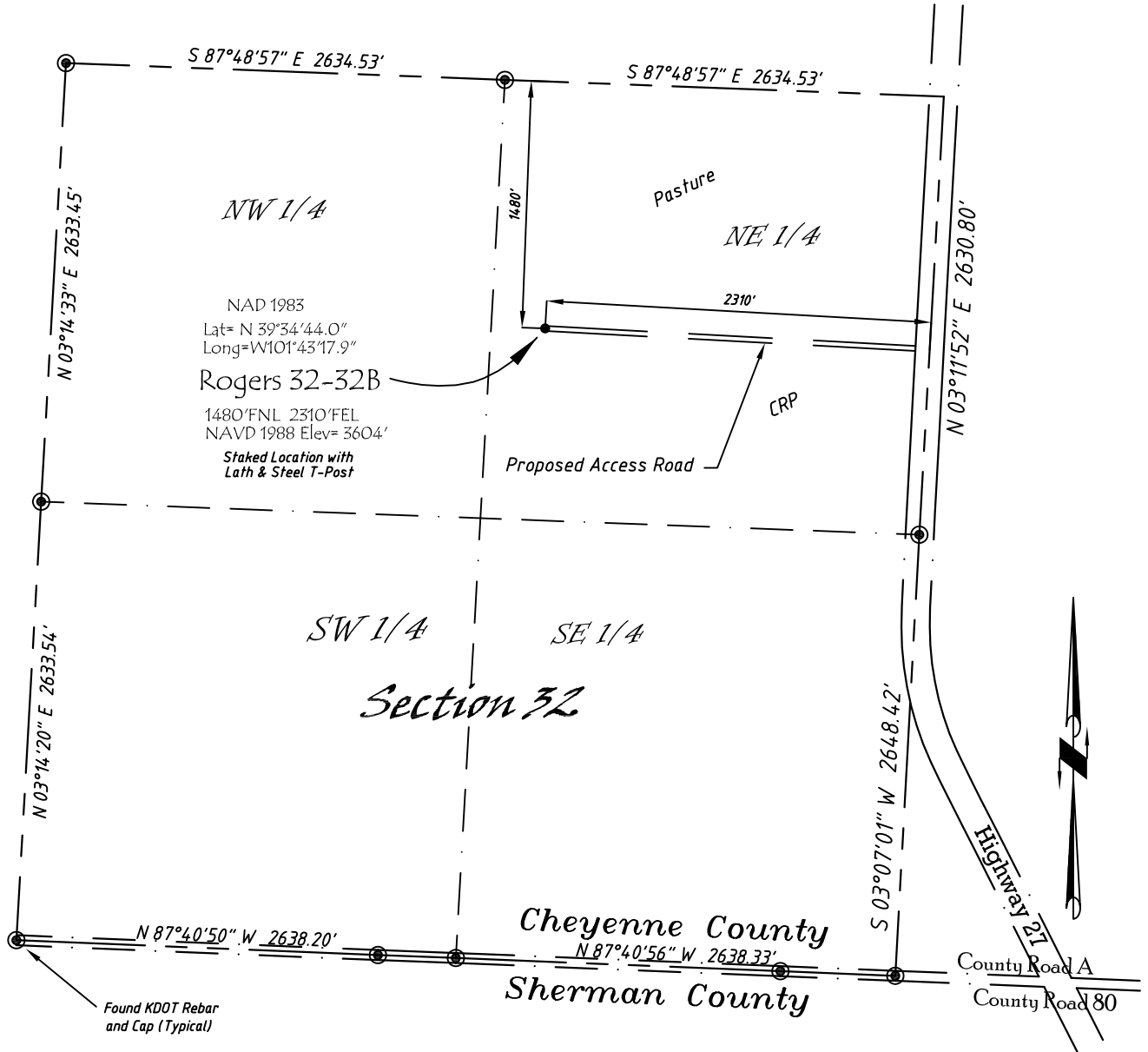


Well Location Map

Rogers 32-32B

SW 1/4, NE 1/4, Section 32, T5S, R39W, 6th P.M. Cheyenne County, Kansas
 1480' FNL - 2310' FEL Elev=3604'



Copyright © 2010

Directions:

From the Intersection of Hwy 27 & Hwy 36 @ Wheeler, KS, Go S on Hwy 27
 Approximately 12.25 miles, then W 2310' to Staked location.

This Drawing is for Construction Purposes Only

Noble Energy, Inc.		
DRAWN GP	DATE 11/21/10	Section 32
FB B73 P75	EQ HijPro	T5S, R39W, 6th P.M. Cheyenne County, KS
SCALE 1"=1000'	SHEET 1 of 1	PROJECT NO. 1570.116



402 Walnut
 Kanorado, KS
 785/399/2551