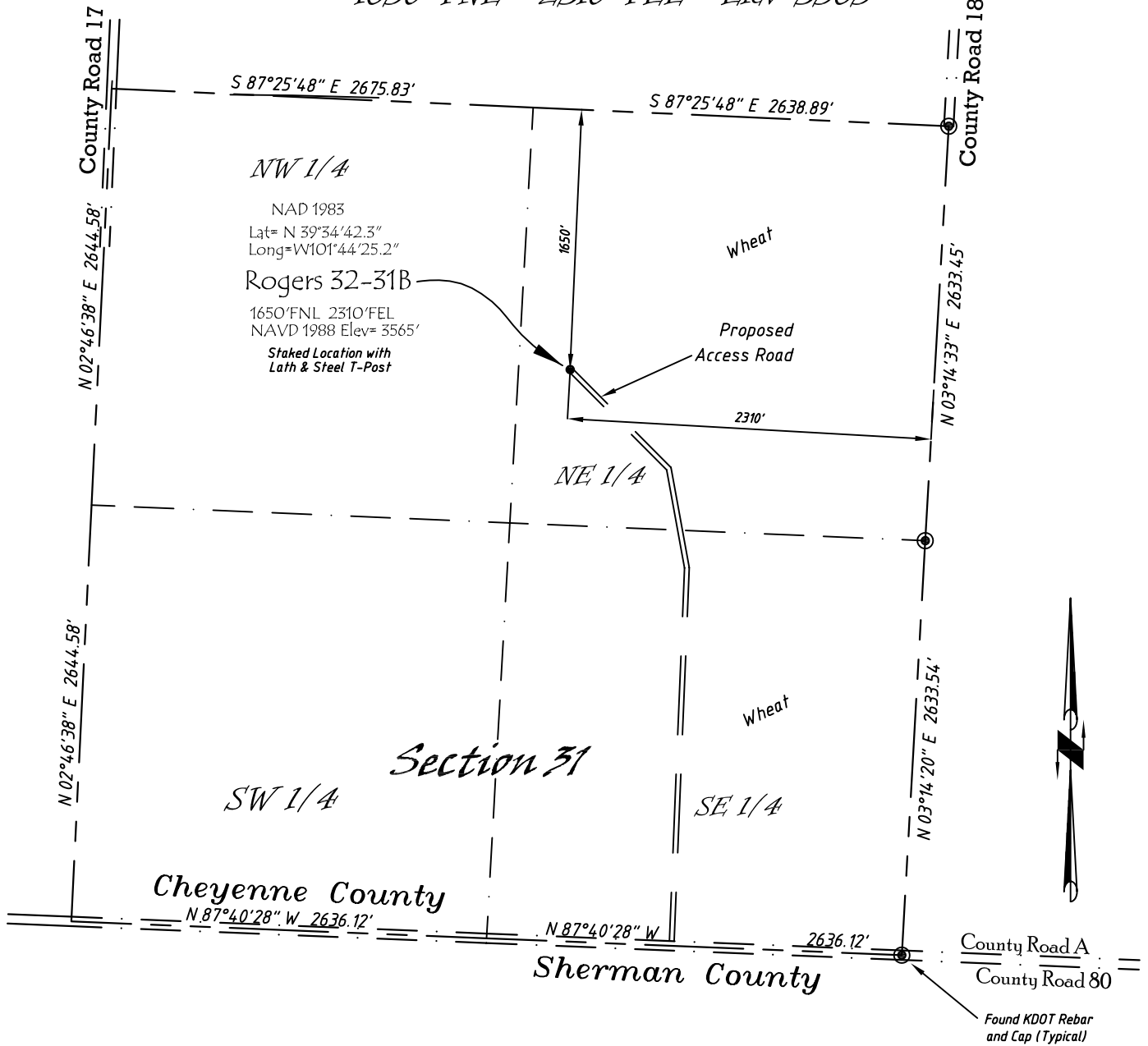


Well Location Map

# Rogers 32-31B

SW 1/4, NE 1/4, Section 31, T5S, R39W, 6th P.M. Cheyenne County, Kansas  
 1650' FNL - 2310' FEL Elev=3565'



Copyright © 2010

Directions:

From the Intersection of Hwy 27 & Hwy 36 @ Wheeler, KS, Go S on Hwy 27  
 Approximately 13 miles, to County Road A, then go W 1.45 miles, then N  
 2400', then North Northwest 1530' +/- to Staked location.

*This Drawing is for Construction Purposes Only*

Noble Energy, Inc.		
<b>DRAWN</b> GP	<b>DATE</b> 11/26/10	Section 31
<b>FB</b> B73 P77	<b>EQ</b> HijPro	T5S, R39W, 6th P.M. Cheyenne County, KS
<b>SCALE</b> 1"=1000'	<b>SHEET</b> 1 of 1	<b>PROJECT NO.</b> 1570.112



402 Walnut  
 Kanorado, KS  
 785/399/2551