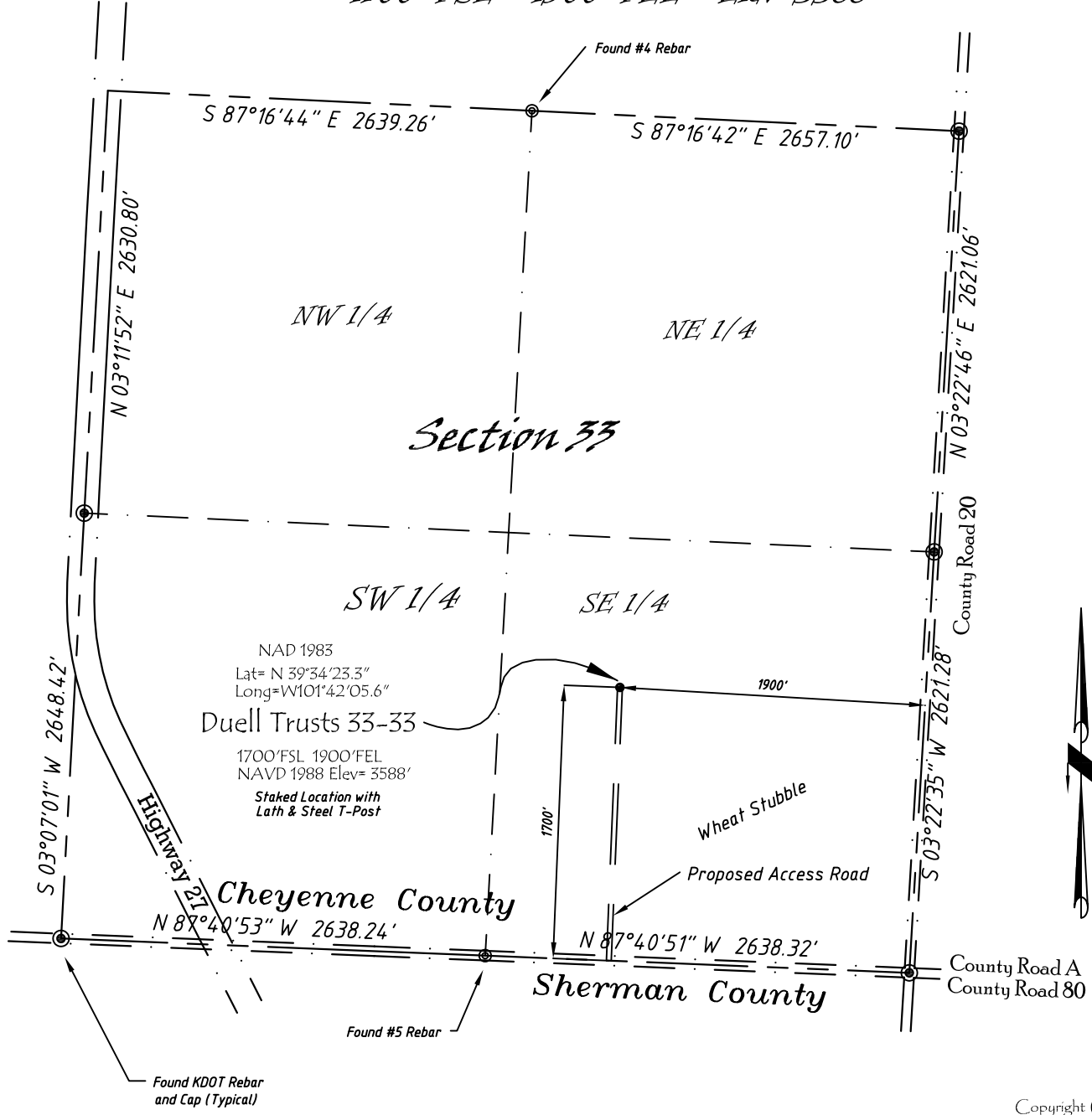


Well Location Map

# Duell Trusts 33-33

NW 1/4, SE 1/4, Section 33, T5S, R39W, 6th P.M. Cheyenne County, Kansas  
 1700' FSL - 1900' FEL Elev=3588



Copyright © 2010

Directions:

From the Intersection of Hwy 27 & Hwy 36 @ Wheeler, KS, Go S on Hwy 27 Approximately 13 miles, to County Road A, then go E 0.45 miles, then N 1700' to Staked location.

*This Drawing is for Construction Purposes Only*

Noble Energy, Inc.		
<b>DRAW</b> GP	<b>DATE</b> 11/21/10	Section 33
<b>FB</b> B73 P73	<b>EQ</b> HijPro	T5S, R39W, 6th P.M. Cheyenne County, KS
<b>SCALE</b> 1"=1000'	<b>SHEET</b> 1 of 1	<b>PROJECT NO.</b> 1570.119

North Winds Surveys, Inc.  
 402 Walnut  
 Kanorado, KS  
 785/399/2551