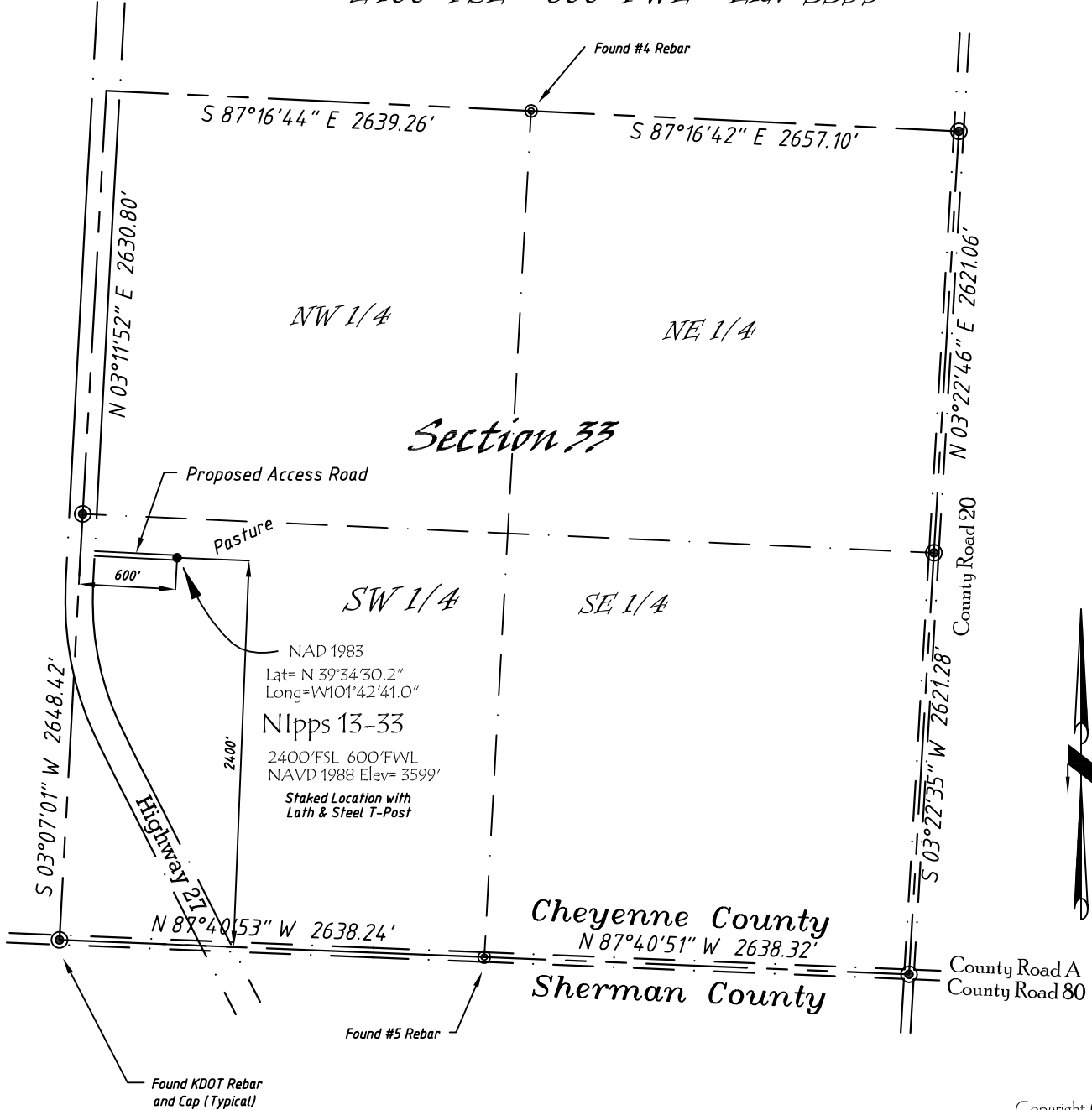


Well Location Map

# Nipps 13-33

NW 1/4, SW 1/4, Section 33, T5S, R39W, 6th P.M. Cheyenne County, Kansas  
 2400' FSL - 600' FWL Elev=3599



Copyright © 2010

Directions:

From the Intersection of Hwy 27 & Hwy 36 @ Wheeler, KS, Go S on Hwy 27  
 Approximately 12.5 miles, then E 600' to Staked location.

*This Drawing is for Construction Purposes Only*

|                          |                         |  |
|--------------------------|-------------------------|--|
| Noble Energy, Inc.       |                         |  |
| <b>DRAWN</b><br>GP       | <b>DATE</b><br>11/19/10 | Section 33                                 |
| <b>FB</b><br>B73 P73     | <b>EQ</b><br>HiPro      | T5S, R39W, 6th P.M.<br>Cheyenne County, KS |
| <b>SCALE</b><br>1"=1000' | <b>SHEET</b><br>1 of 1  | <b>PROJECT NO.</b><br>1570.118             |



402 Walnut  
 Kanorado, KS  
 785/399/2551