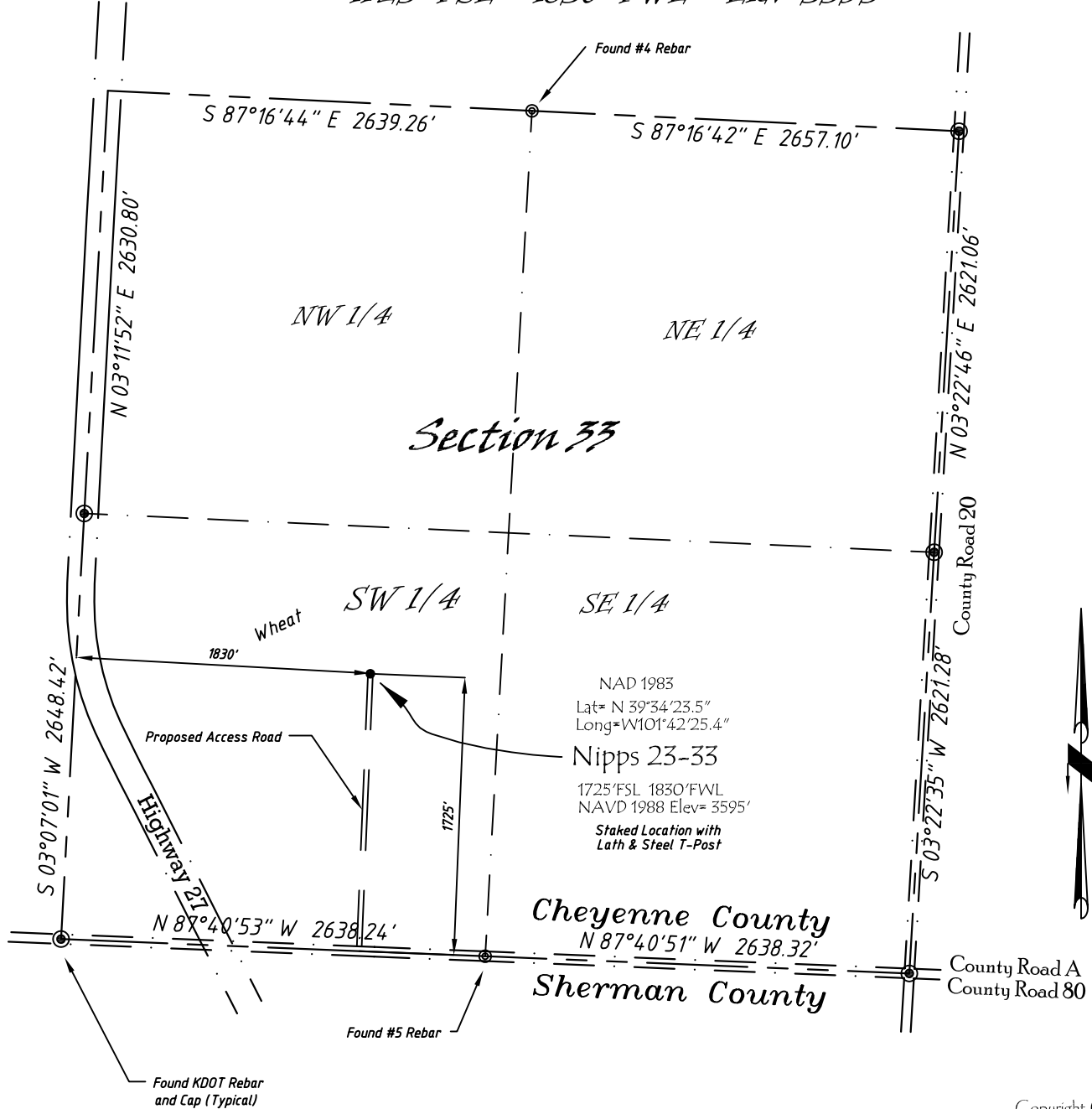


Well Location Map

Nipps 23-33

NE 1/4, SW1/4, Section 33, T5S, R39W, 6th P.M. Cheyenne County, Kansas
 1725' FSL - 1830' FWL Elev=3595'



Copyright © 2010

Directions:

From the Intersection of Hwy 27 & Hwy 36 @ Wheeler, KS, Go S on Hwy 27 Approximately 13 miles, to County Road A, then go E 0.2 Miles, then N 1725' to Staked location.

This Drawing is for Construction Purposes Only

Noble Energy, Inc.		
DRAWN GP	DATE 11/21/10	Section 33
FB B73 P73	EQ HilPro	T5S, R39W, 6th P.M. Cheyenne County, KS
SCALE 1"=1000'	SHEET 1 of 1	PROJECT NO. 1570.111

North
Winds
Surveys, Inc.

402 Walnut
Kanorado, KS
785/399/2551