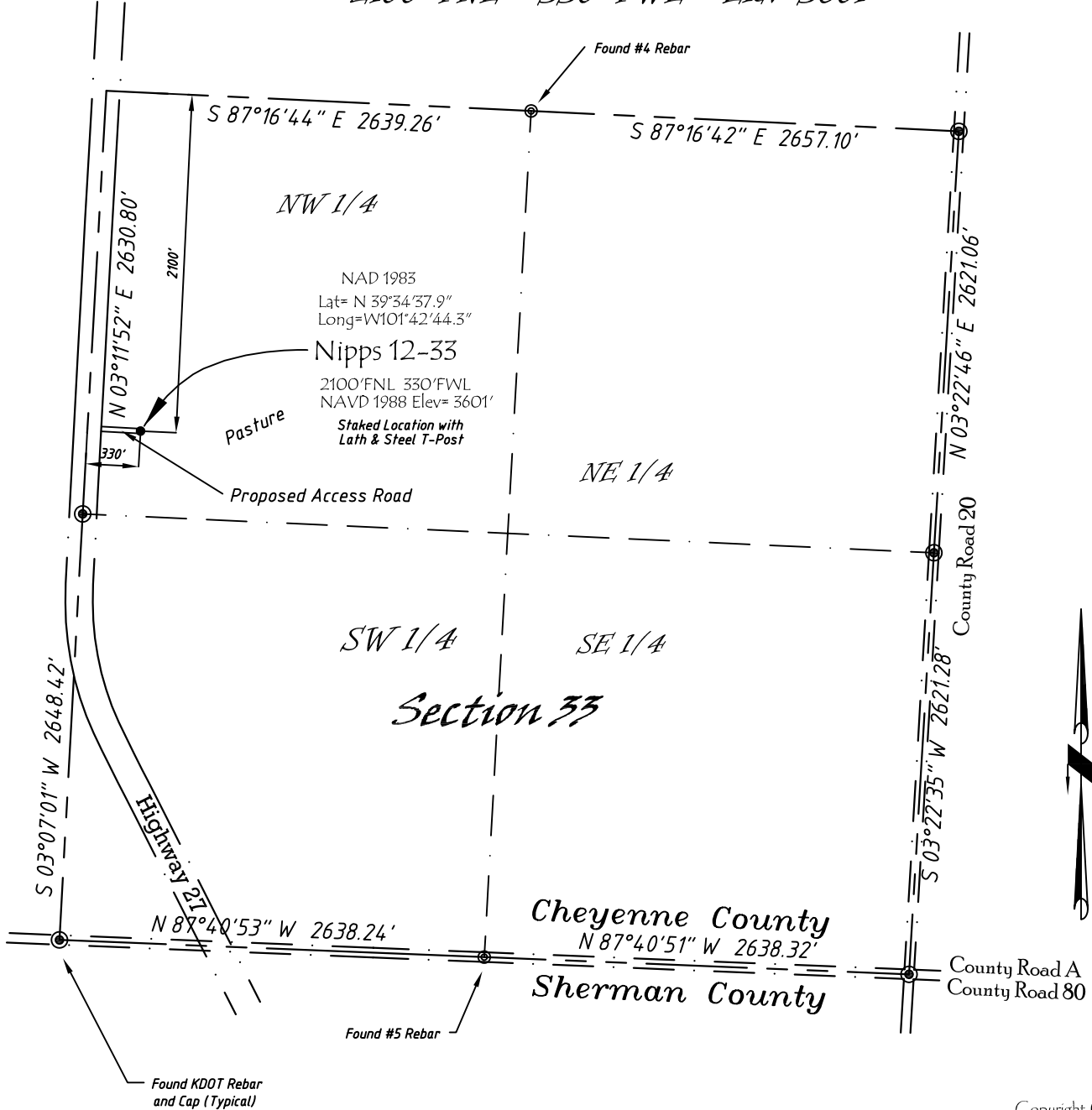


Well Location Map

# Nipps 12-33

SW 1/4, NW 1/4, Section 33, T5S, R39W, 6th P.M. Cheyenne County, Kansas  
 2100' FNL - 330' FWL Elev=3601



Copyright © 2010

Directions:

From the Intersection of Hwy 27 & Hwy 36 @ Wheeler, KS, Go S on Hwy 27  
 Approximately 12.35 miles, then E 330' to Staked location.

*This Drawing is for Construction Purposes Only*

Noble Energy, Inc.		
<b>DRAWN</b> GP	<b>DATE</b> 11/21/10	Section 33
<b>FB</b> B73 P75	<b>EQ</b> HiPro	T5S, R39W, 6th P.M. Cheyenne County, KS
<b>SCALE</b> 1"=1000'	<b>SHEET</b> 1 of 1	<b>PROJECT NO.</b> 1570.110



402 Walnut  
 Kanorado, KS  
 785/399/2551