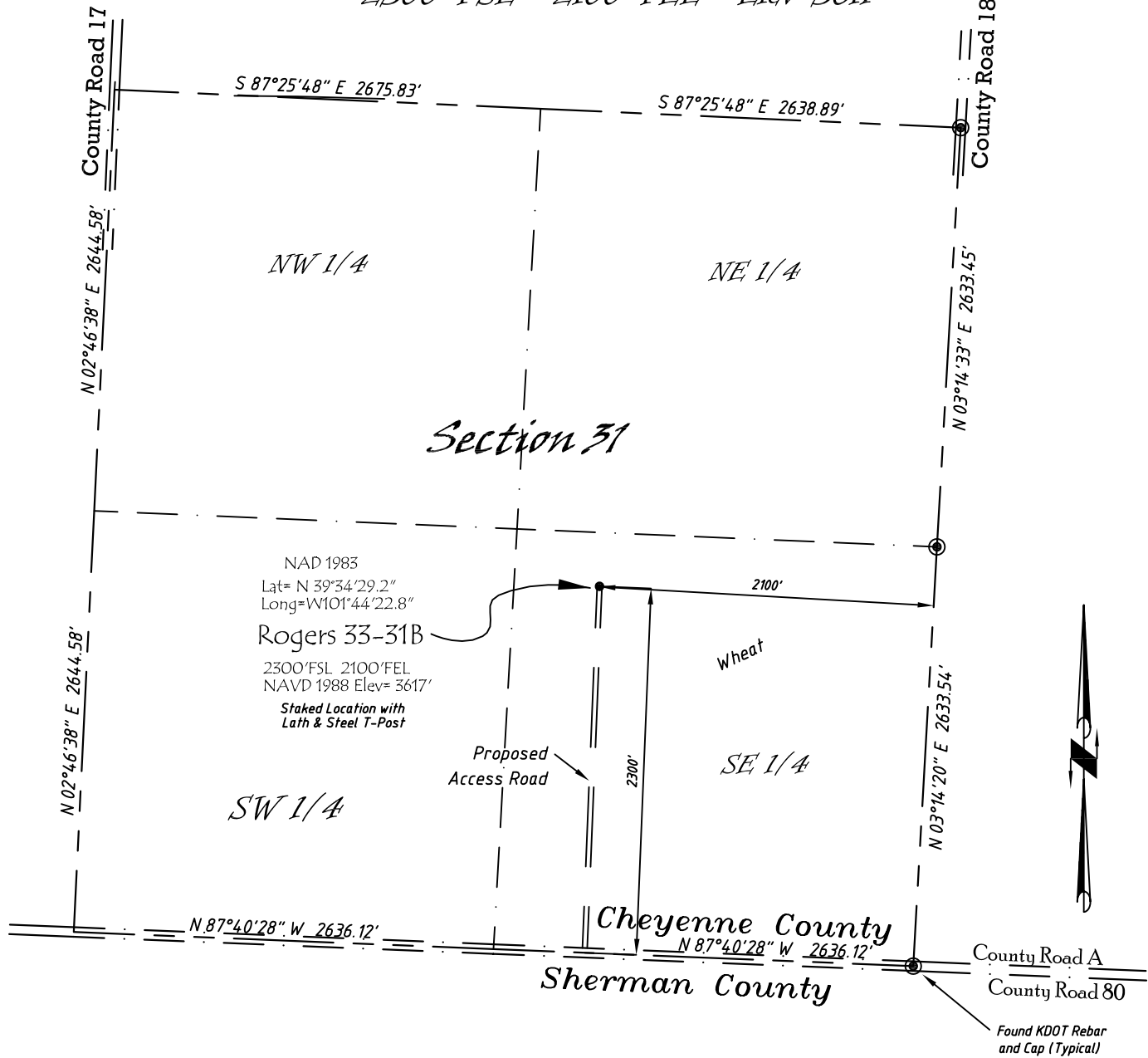


Well Location Map

Rogers 33-31B

NW 1/4, SE 1/4, Section 31, T5S, R39W, 6th P.M. Cheyenne County, Kansas
 2300' FSL - 2100' FEL Elev=3617'



Copyright © 2010

Directions:

From the Intersection of Hwy 27 & Hwy 36 @ Wheeler, KS, Go S on Hwy 27
 Approximately 13 miles, to County Road A, then go W 1.60 miles, then N
 2300' to Staked location.

This Drawing is for Construction Purposes Only

Noble Energy, Inc.		
DRAWN GP	DATE 11/27/10	Section 31
FB B73 P76	EQ HijPro	T5S, R39W, 6th P.M. Cheyenne County, KS
SCALE 1"=1000'	SHEET 1 of 1	PROJECT NO. 1570.124



402 Walnut
 Kanorado, KS
 785/399/2551