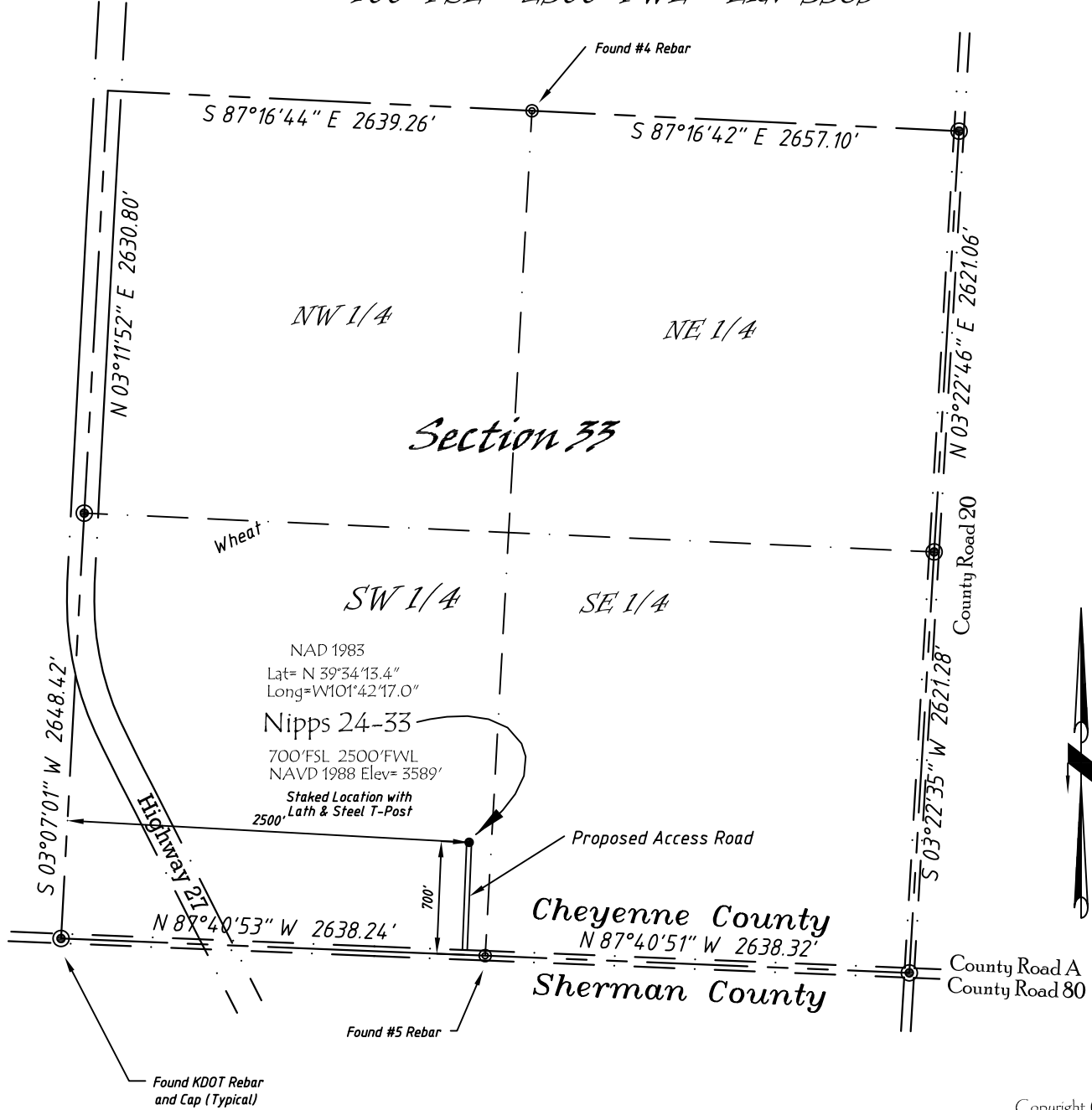


Well Location Map

# Nipps 24-33

SE 1/4, SW1/4, Section 33, T5S, R39W, 6th P.M. Cheyenne County, Kansas  
 700' FSL - 2500' FWL Elev=3589



NAD 1983  
 Lat= N 39°34'13.4"  
 Long=W101°42'17.0"  
**Nipps 24-33**  
 700'FSL 2500'FWL  
 NAVD 1988 Elev= 3589'  
 Staked Location with  
 Lath & Steel T-Post  
 2500'

Copyright © 2010

Directions:

From the Intersection of Hwy 27 & Hwy 36 @ Wheeler, KS, Go S on Hwy 27  
 Approximately 13 miles, to County Road A, then go E 0.3 Miles, then N  
 700' to Staked location.

*This Drawing is for Construction Purposes Only*

<b>Noble Energy, Inc.</b>		
<b>DRAWN</b> GP	<b>DATE</b> 11/19/10	Section 33
<b>FB</b> B73 P73	<b>EQ</b> HilPro	T5S, R39W, 6th P.M. Cheyenne County, KS
<b>SCALE</b> 1"=1000'	<b>SHEET</b> 1 of 1	<b>PROJECT NO.</b> 1570.128

North  
Winds  
Surveys, Inc.

402 Walnut  
Kanorado, KS  
785/399/2551