



SUPERIOR
Hays,
Kansas

**MICRO
LOG**

Company LOTUS OPERATING CO. LLC.
Well LADNER #1
Field STRANATHAN
County BARBER
State KANSAS

Company LOTUS OPERATING COMPANY, LLC.
Well LADNER #1
Field STRANATHAN
County BARBER State KANSAS

Location: API # : 15-007-23566-0000
600' FSL & 2260' FWL
SEC 35 TWP 34S RGE 12W
Permanent Datum GROUND LEVEL Elevation 1417
Log Measured From KELLY BUSHING 13' A.G.L.
Drilling Measured From KELLY BUSHING
Other Services
CDL/CNL/PE
DIL/SONIC
Elevation
K.B. 1430
D.F. 1428
G.L. 1417

Date	8/15/10
Run Number	TWO
Depth Driller	5220
Depth Logger	5222
Bottom Logged Interval	5199
Top Log Interval	3600
Casing Driller	10 3/4" @ 260'
Casing Logger	260
Bit Size	7 7/8"
Type Fluid in Hole	CHEMICAL MUD
Density / Viscosity	9.5/49
pH / Fluid Loss	10.5/8.8
Source of Sample	FLOWLINE
Rim @ Meas. Temp	.600 @ 99F
Rmf @ Meas. Temp	.450 @ 99F
Rmc @ Meas. Temp	.720 @ 99F
Source of Rmf / Rmc	MEASUREMENT
Rim @ BHT	.468 @ 127F
Time Circulation Stopped	5.5 HOURS
Time Logger on Bottom	2:20 P.M.
Maximum Recorded Temperature	127F
Equipment Number	0836
Location	HAYS, KANSAS
Recorded By	JEFF LUEBBERS
Witnessed By	JOE BAKER

<<< Fold Here >>>

All interpretations are opinions based on inferences from electrical or other measurements and we cannot and do not guarantee the accuracy or correctness of any interpretation, and we shall not, except in the case of gross or willful negligence on our part, be liable or responsible for any loss, costs, damages, or expenses incurred or sustained by anyone resulting from any interpretation made by any of our officers, agents or employees. These interpretations are also subject to our general terms and conditions set out in our current Price Schedule.

Comments

THANK YOU FOR USING SUPERIOR WELL SERVICE HAYS, KANSAS (785) 628-6395
DIRECTIONS
MEDICINE LODGE, KS., 16S. ON HWY 281 TO MM #8, (RATTLESNAKE TRAIL RD.) 1W., 1S., 1W., N. INTO

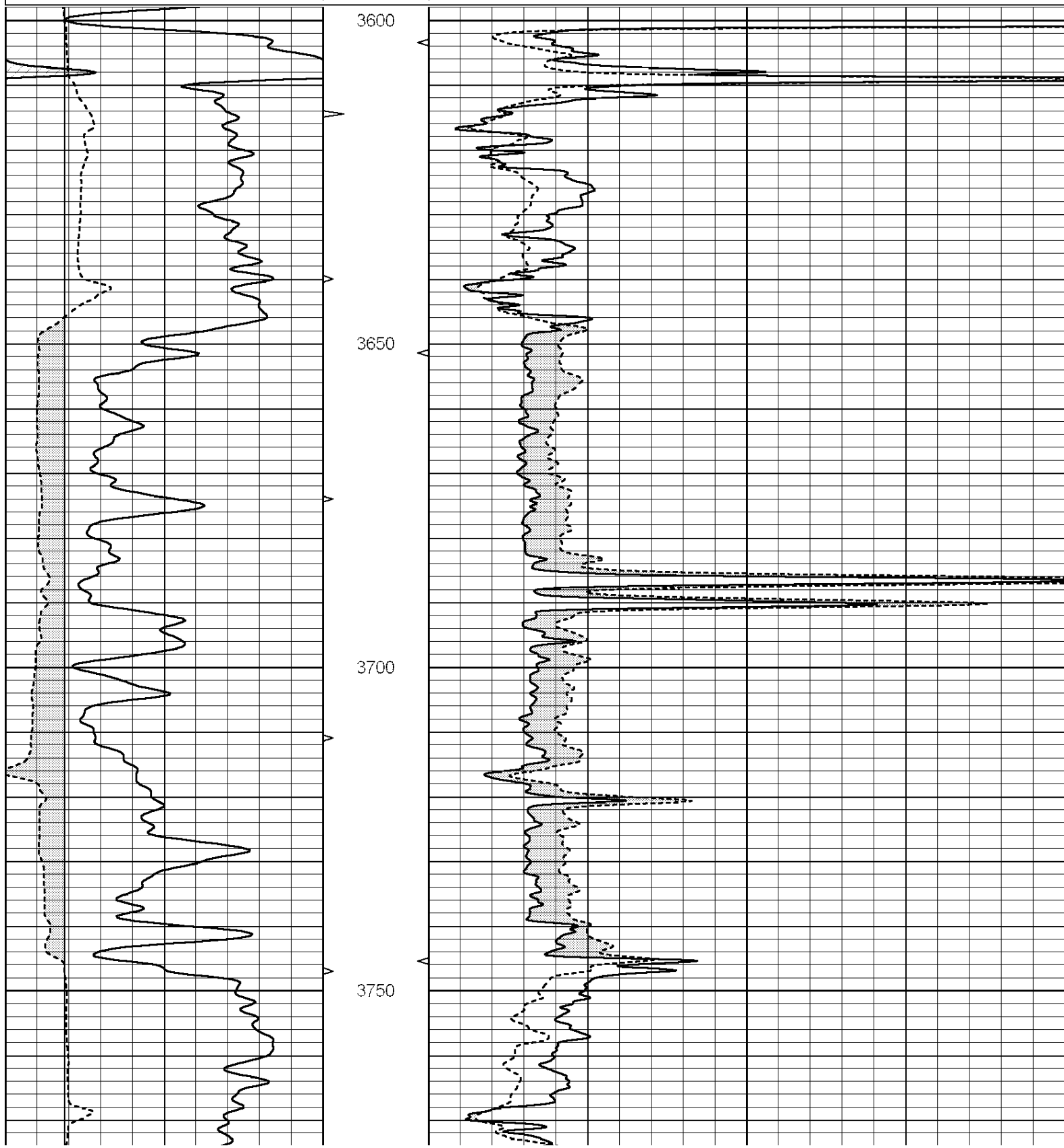


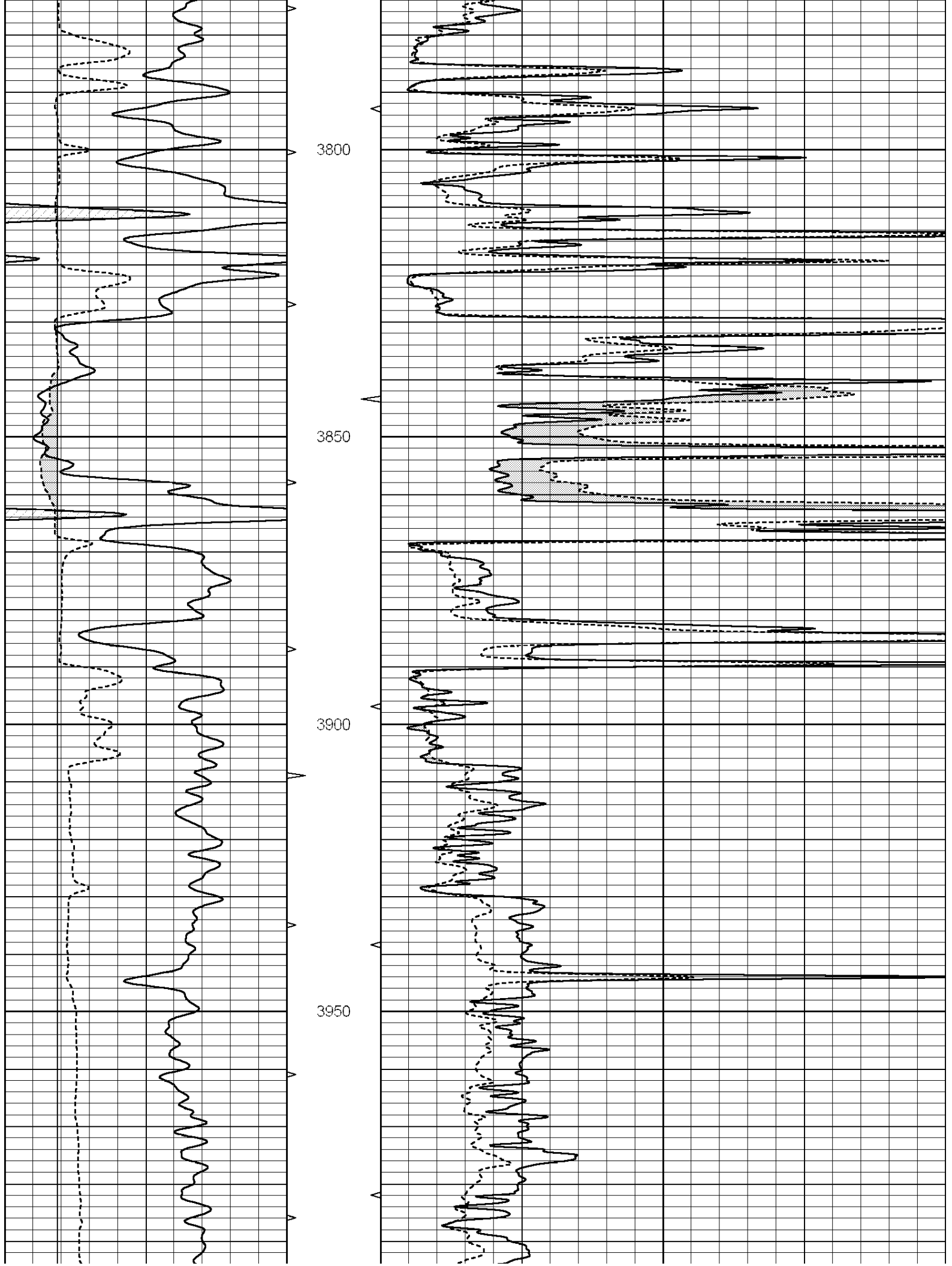
SUPERIOR
Hays,
Kansas

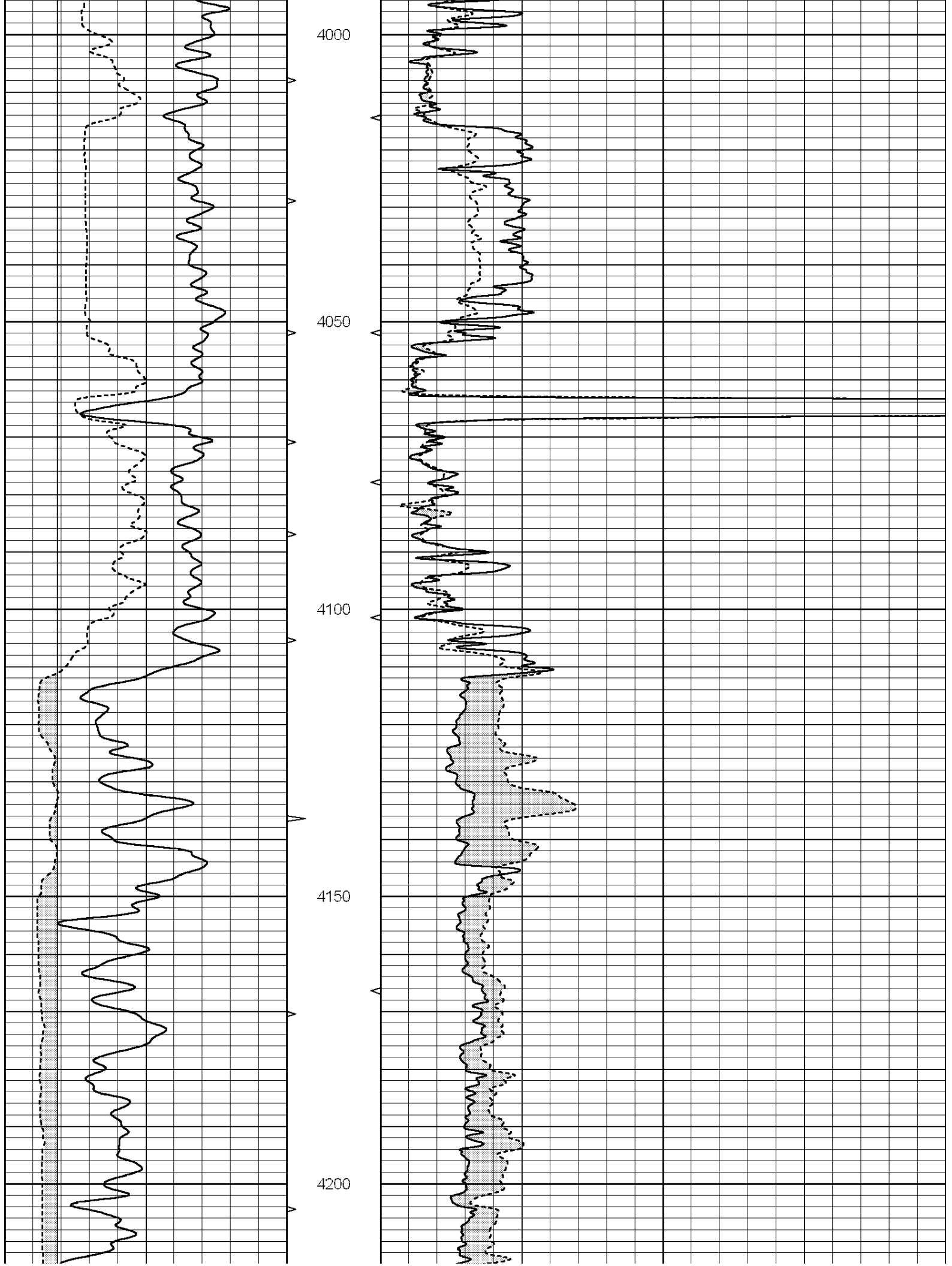
MAIN SECTION

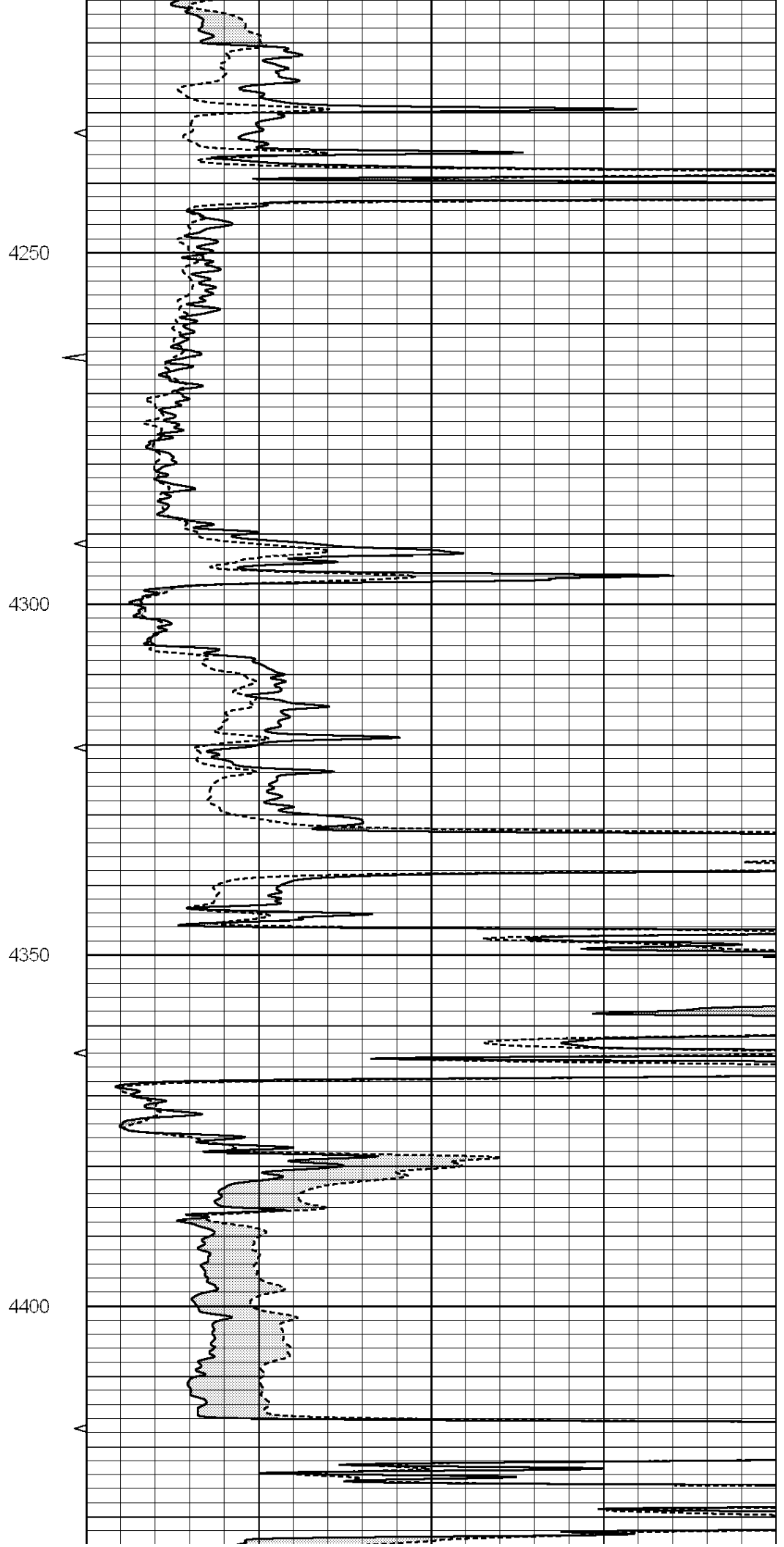
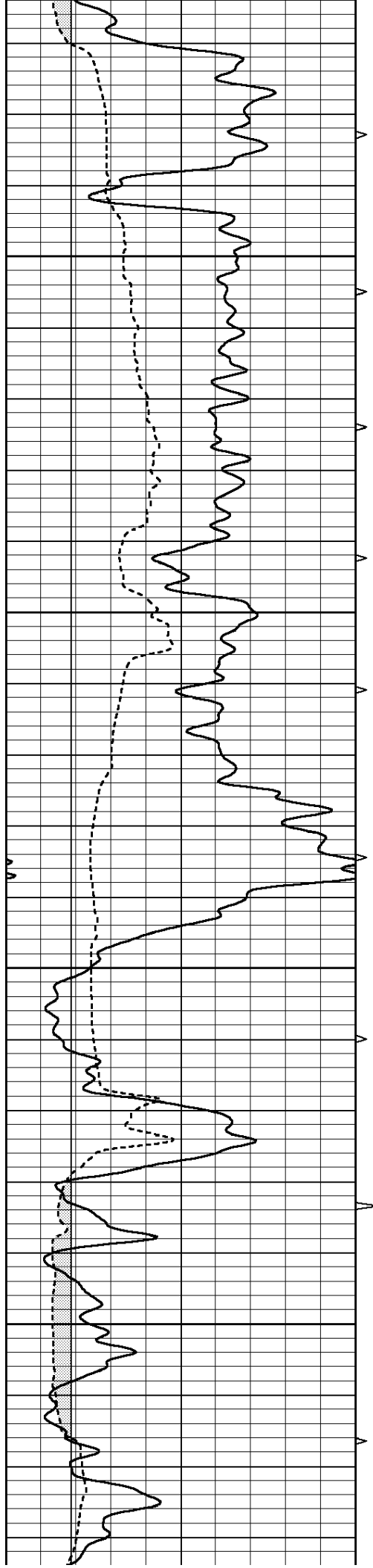
Database File: 005583pe.db
 Dataset Pathname: pass6.4
 Presentation Format: micro
 Dataset Creation: Sun Aug 15 18:35:39 2010
 Charted by: Depth in Feet scaled 1:240

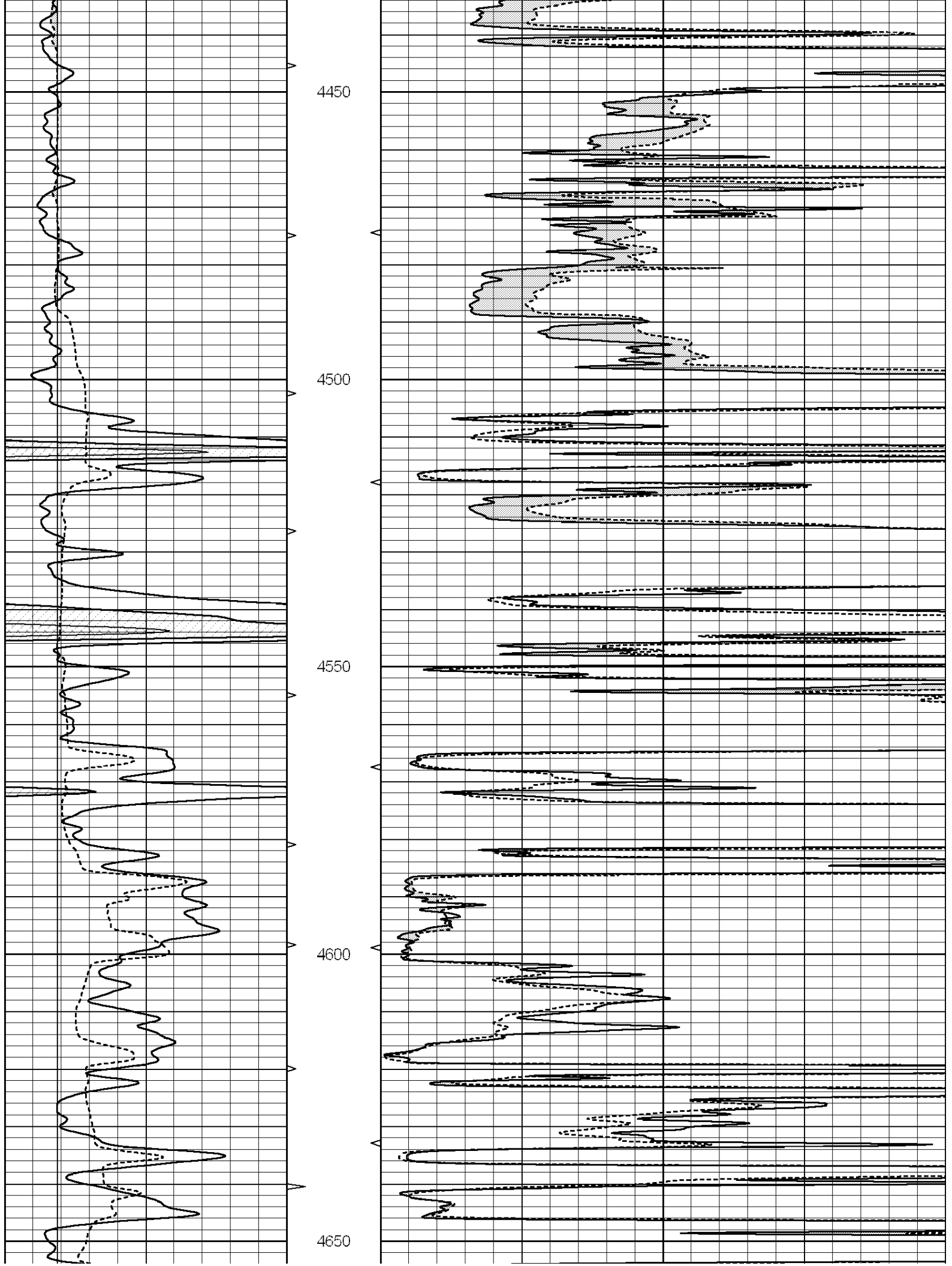
0	GAMMA RAY (GAPI)	150	ABHV	0	MEL1.5 (Ohm-m)	40
6	CALIPER (in)	16	10 (ft3)	0	MEL2.0 (Ohm-m)	40
			TBHV			
			0 (ft3)	10		

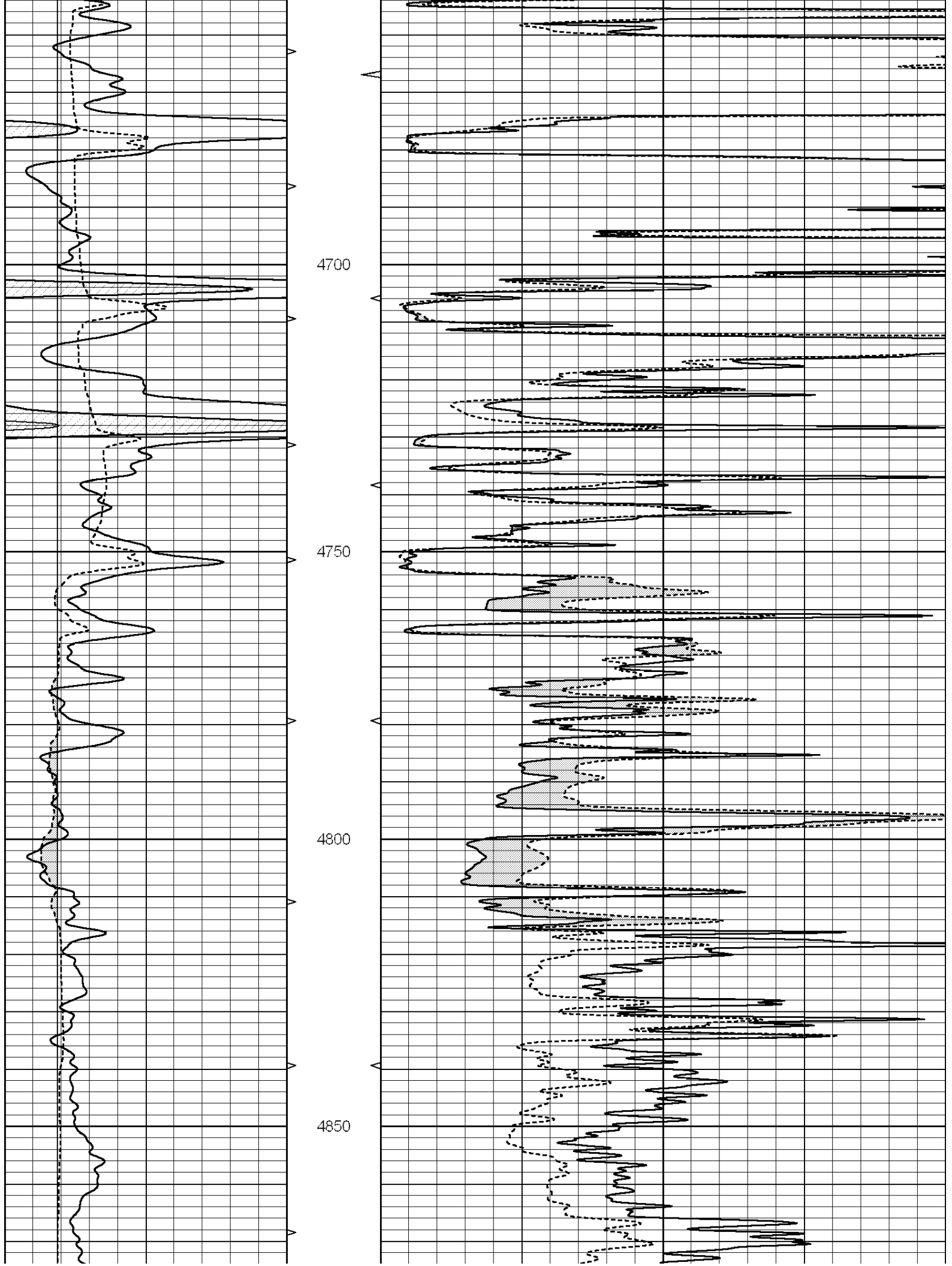


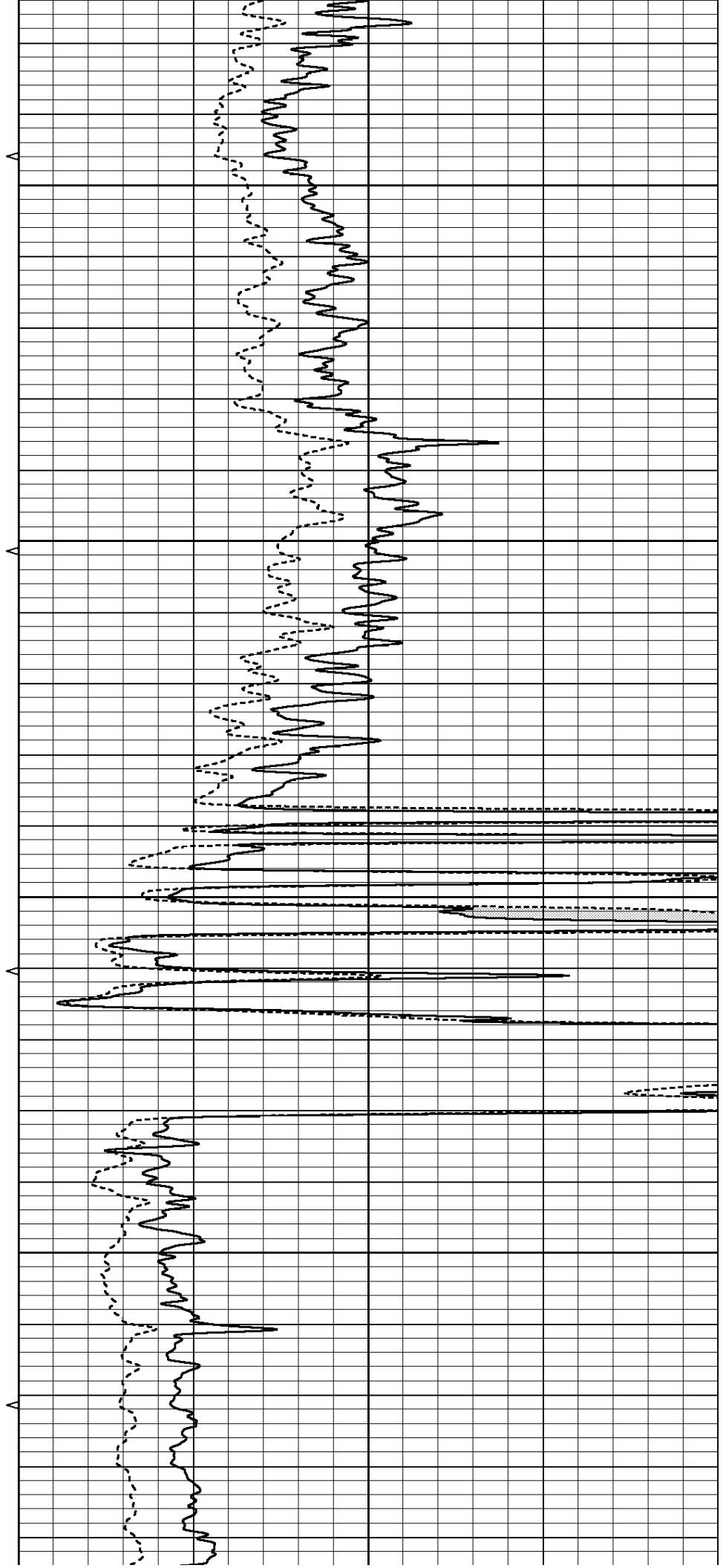
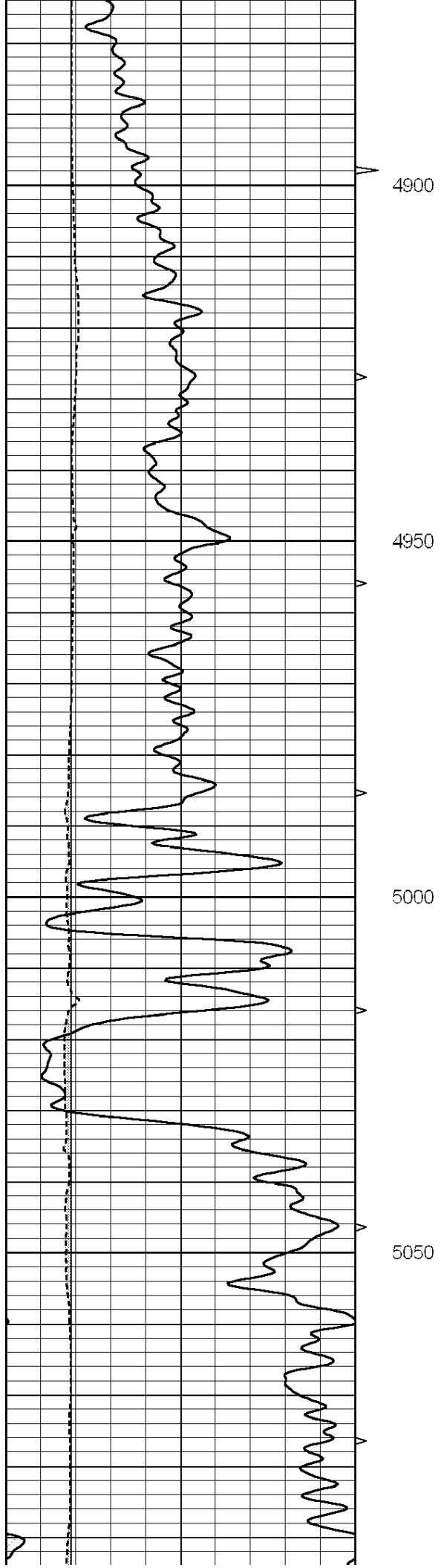


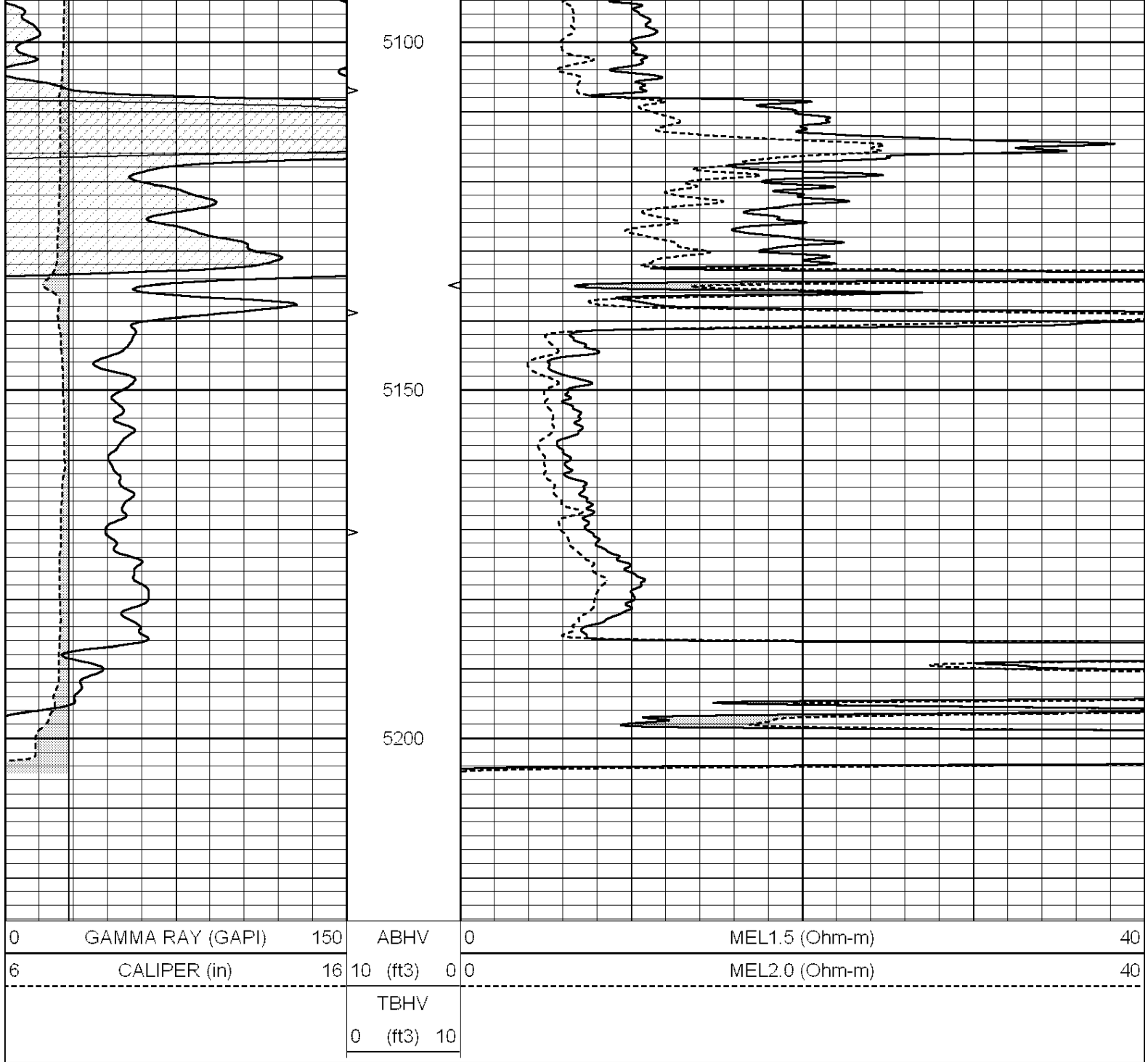










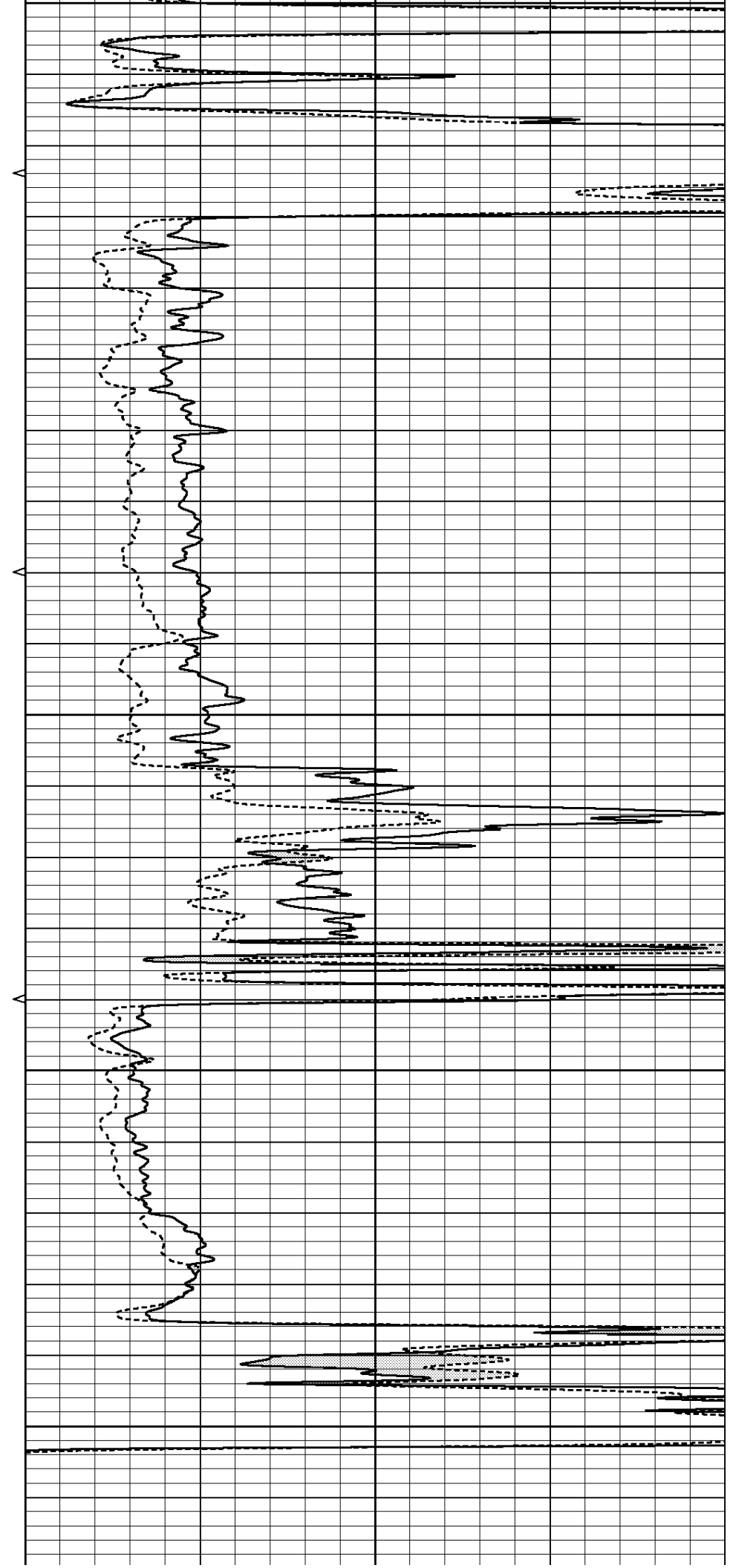
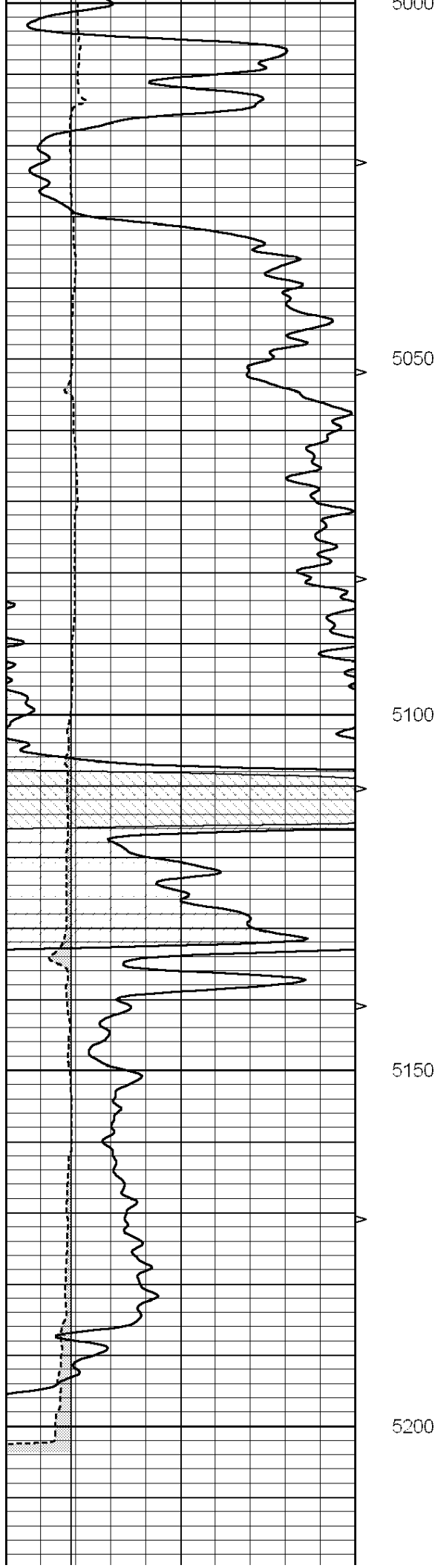


SUPERIOR
Hays,
Kansas

REPEAT SECTION

Database File: 005583pe.db
 Dataset Pathname: pass5.3
 Presentation Format: micro
 Dataset Creation: Sun Aug 15 17:30:24 2010 by Calc Open-Cased 090629
 Charted by: Depth in Feet scaled 1:240

0	GAMMA RAY (GAPI)	150	ABHV	0	MEL1.5 (Ohm-m)	40
6	CALIPER (in)	16	10 (ft3)	0	MEL2.0 (Ohm-m)	40
			TBHV			
			0 (ft3)	10		



0	GAMMA RAY (GAPI)	150	ABHV	0	MEL1.5 (Ohm-m)	40
6	CALIPER (in)	16	10 (ft3) 0	0	MEL2.0 (Ohm-m)	40
			TBHV			
			0 (ft3) 10			

Calibration Report

Database File: 005583pe.db
Dataset Pathname: pass6.4
Dataset Creation: Sun Aug 15 18:35:39 2010

MICRO Calibration Report

Serial Number: MICRO5
Tool Model: PROBE
Performed: Sun Aug 15 17:26:28 2010

Caliper Calibration: Gain=3.761 Offset=-3.456

References	Low Cal	High Cal
Readings	5.700	14.000
	2.435	4.641

1.5" Calibration: Gain=42.000 Offset=-0.500

References	Low Cal	High Cal
Readings	0.000	20.000
	0.008	0.991

2" Calibration: Gain=50.000 Offset=-0.700

References	Low Cal	High Cal
Readings	0.000	20.000
	0.014	0.905

Gamma Ray Calibration Report

Serial Number: GR4
Tool Model: OPEN
Performed: Sun Aug 15 17:26:32 2010

Calibrator Value: 200.0 GAPI

Background Reading: 0.0 cps
Calibrator Reading: 189.0 cps

Sensitivity: 1.1000 GAPI/cps