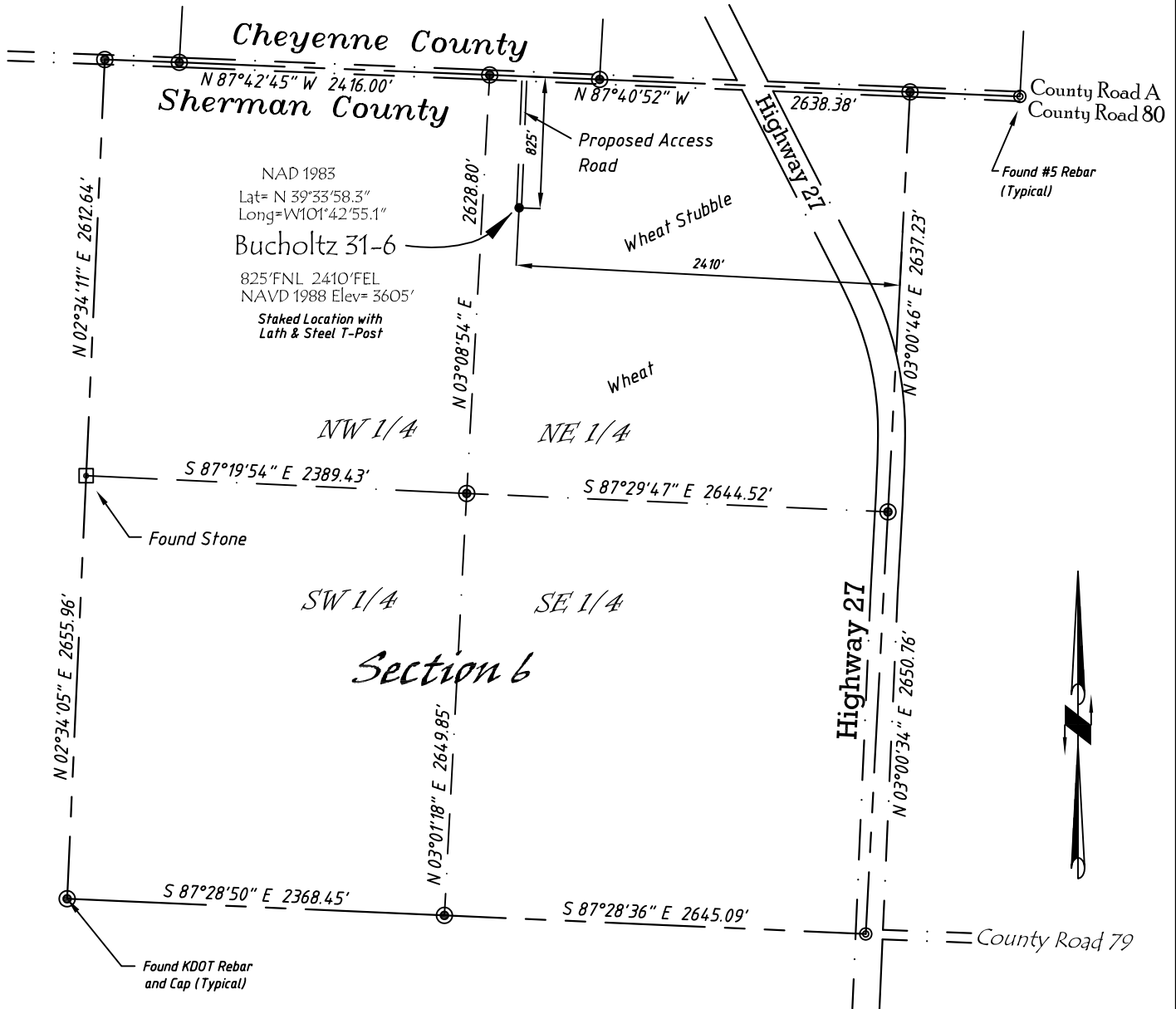


Well Location Map

Bucholtz 31-6

NW 1/4, NE 1/4, Section 6, T6S, R39W, 6th P.M. Sherman County, Kansas
 825' FNL - 2410' FEL Elev=3605'



Copyright © 2010

Directions:

From the Intersection of Hwy 27 & Hwy 36 @ Wheeler, KS, Go S on Hwy 27
 Approximately 13 miles, to County Road A, then go W 0.25 Miles, then S
 825' to Staked location.

This Drawing is for Construction Purposes Only

Noble Energy, Inc.		
DRAWN GP	DATE 11/21/10	Section 6 T6S, R39W, 6th P.M. Sherman County, KS
FB B73 P72	EQ HijPro	
SCALE 1"=1000'	SHEET 1 of 1	PROJECT NO. 1570.120

North
Winds
Surveys, Inc.

402 Walnut
Kanorado, KS
785/399/2551