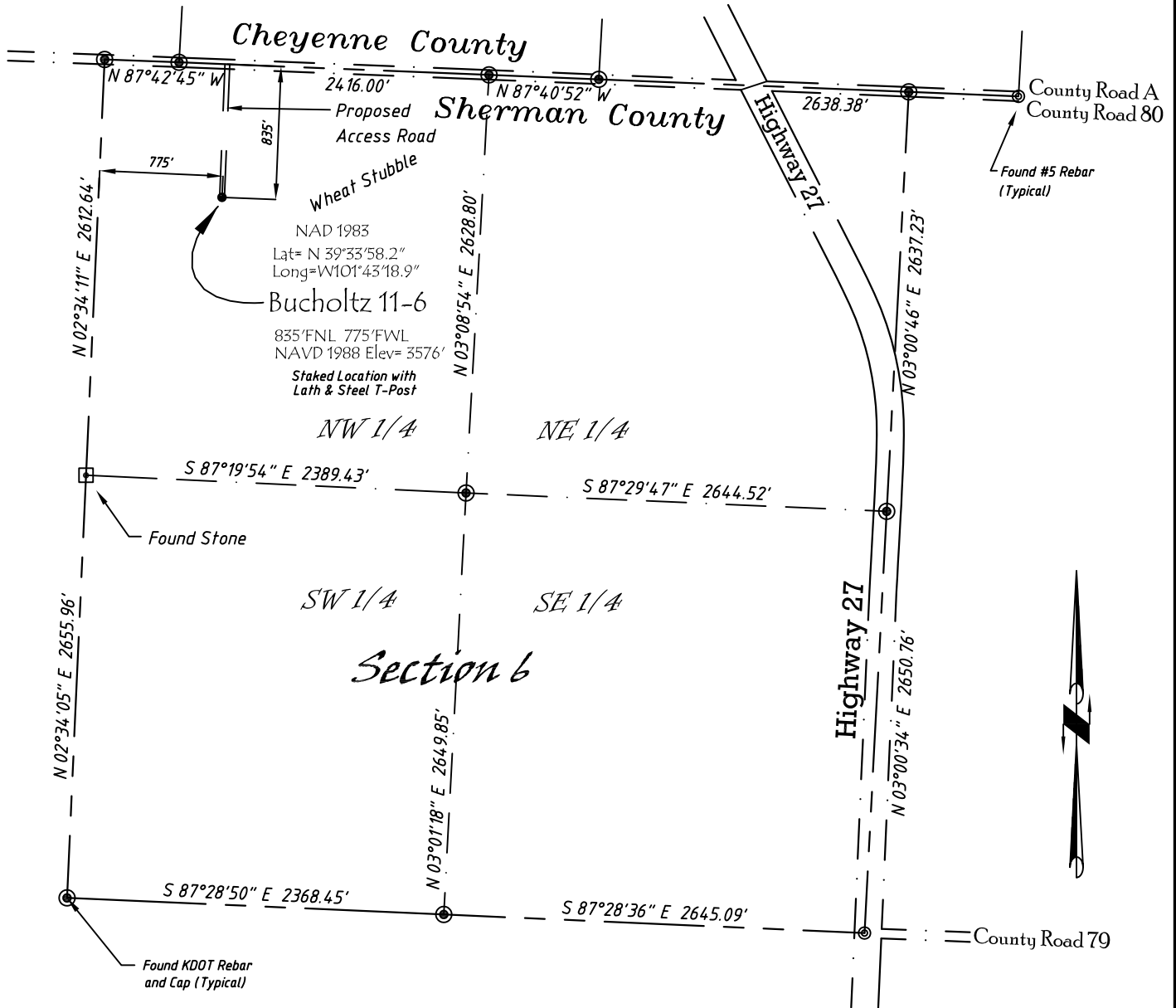


Well Location Map

Bucholtz 11-6

NW 1/4, NW 1/4, Section 6, T6S, R39W, 6th P.M. Sherman County, Kansas
 835' FNL - 775' FWL Elev=3576'



Copyright © 2010

Directions:

From the Intersection of Hwy 27 & Hwy 36 @ Wheeler, KS, Go S on Hwy 27
 Approximately 13 miles, to County Road A, then go W 0.6 miles, then S
 835' to Staked location.

This Drawing is for Construction Purposes Only

Noble Energy, Inc.		
DRAWN GP	DATE 11/21/10	Section 6 T6S, R39W, 6th P.M. Sherman County, KS
FB B73 P72	EQ HijPro	
SCALE 1"=1000'	SHEET 1 of 1	PROJECT NO. 1570.123

North
Winds
Surveys, Inc.

402 Walnut
Kanorado, KS
785 / 399 / 2551