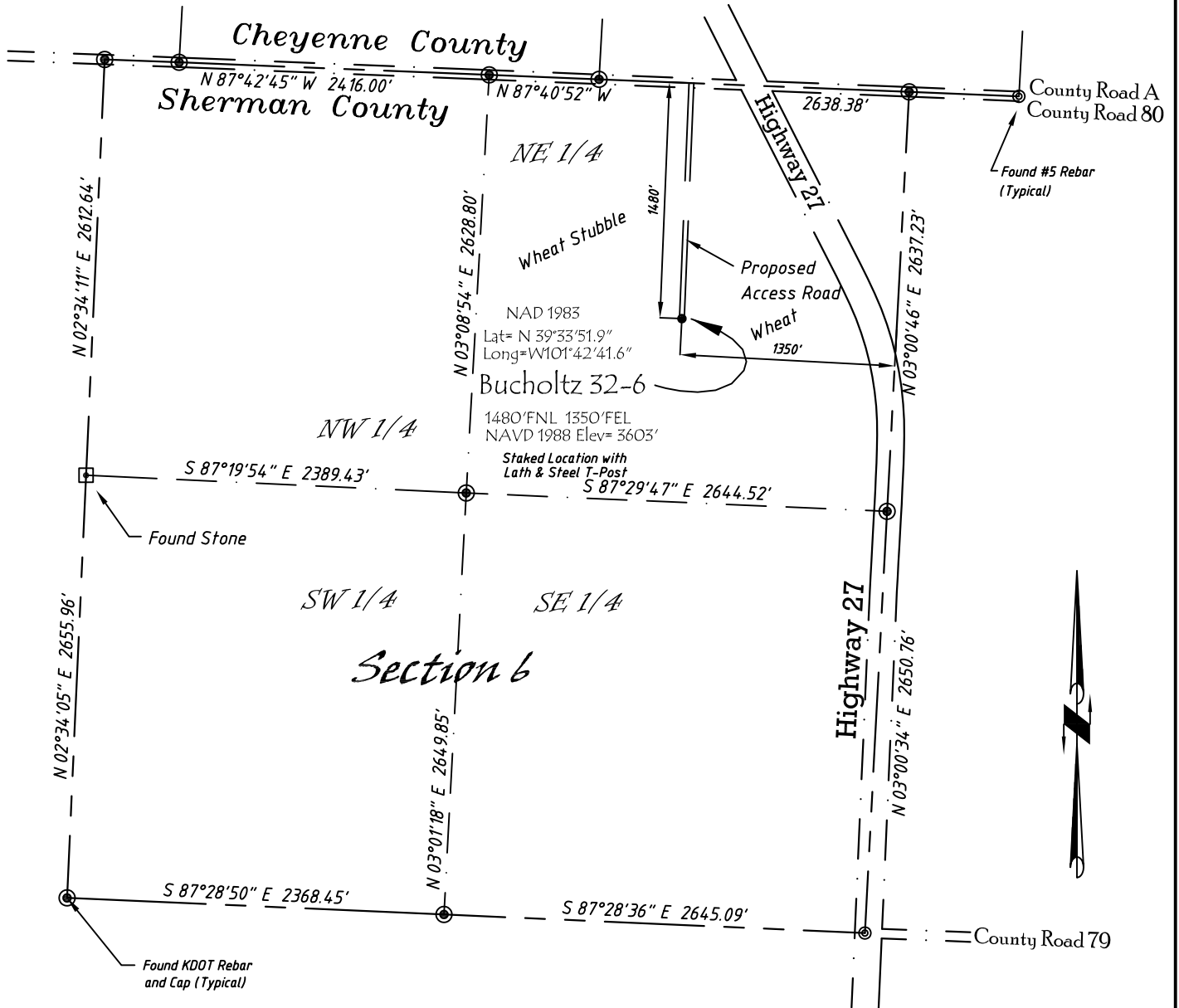


Well Location Map

Bucholtz 32-6

SW 1/4, NE 1/4, Section 6, T6S, R39W, 6th P.M. Sherman County, Kansas
 1480' FNL - 1350' FEL Elev=3603'



Copyright © 2010

Directions:

From the Intersection of Hwy 27 & Hwy 36 @ Wheeler, KS, Go S on Hwy 27
 Approximately 13 miles, to County Road A, then go W 300 feet, then S
 1480' to Staked location.

This Drawing is for Construction Purposes Only

Noble Energy, Inc.		
DRAWN GP	DATE 11/21/10	Section 6 T6S, R39W, 6th P.M. Sherman County, KS
FB B73 P72	EQ HjPro	
SCALE 1"=1000'	SHEET 1 of 1	PROJECT NO. 1570.122



402 Walnut
 Kanorado, KS
 785/399/2551