

**Randall Kilian Corporation**

**Geologist**



**Certified Petroleum  
Geologist #3351  
License #224**

P.O. Box 26  
Hays, Kansas 67601-0026  
Phone: 785-628-6061  
Cell: 785-635-1349

## **GEOLOGIST'S WELL REPORT**

COMPANY BACH OIL PRODUCTION (31569)

WELL Anita #1

FIELD Wildcat

LOCATION (legal) Ad. NW NE SW NW

(1610' FNL & 740' FWL)

Section 30 TWP 8S RGE 19W

(Map) 6½ mi N & 3 mi W of Zurich, Ks.

COUNTY Rooks STATE Kansas

ELEVATION: 2036' K.B., 2031' G.L.

Depths measured from Kelly Bushing

A. P. I. NUMBER 15-163-23901

GEOLOGY BY Randall Kilian  
Tobis Eck

# PERTINENT WELL DATA

CONTRACTOR Murfin Drilling Co., Inc. (30606)

RIG #16 HYDRAULICS D-375 6x14x60  
(Andy Dinkel TP)

DRILL PIPE 4 1/2" X-H COLLARS 6 1/2" 17 (503')

CASING: SURFACE 8 5/8" @ 218' w/ 150 sx Common

PRODUCTION \_\_\_\_\_

DRILLING FLUID: COMPANY Andy's Mud & Chemical Co.  
(Ken Rupp)

TYPE: Chemical & Drispac

REMARKS: Full service

DRILL STEM TESTS: COMPANY Trilobite Testing Inc.  
(Brian Fairbank)

NUMBER OF TESTS One (1)

ELECTIC LOGS: COMPANY Pioneer Log-Tech Inc.

DETAIL (5") 2900' - RTD

TYPE RAG, Sonic

DRILLING TIME FROM 2900' TO RTD

SAMPLE TIME FROM 2900' TO RTD

SUPERVISION FROM 2900' TO RTD

VERTICAL DEVIATION 1/2° @ 220', 1/2° @ 2056'

PLUGGING REPORT 25 sx @ 3500', 25 @ 1545', 100 @ 860'  
40 @ 270', 10 @ 40', 30 Rat, 15 Mouse, 245 sx 60/40 Poz

Ed Schumaker

RESERVE PIT 500 bbls., Chl. 22,000 Ca. 600



# DRILL STEM TESTS

NO	INTERVAL	IFF/TIME	ISIF/TIME	FFP/TIME	FSIF/TIME	IHP/FHP	RECOVERY
1	LKc E-1 3319- 3365'	58# 47# 5"	1045#  60"	72# 84# 60"	1006#  90"	1669# 1573#	2' Oil 128' M, Wtr
2							
3							
4							
5							
6							
7							
8							

## MUD RECORD

CHK	DEPTH	WT	VIS	FIL	CHL	YP
1	2790'					
2	2960'	8.7	56			
3	3053'	8.9	47	8.0	2k	16
4	3180'	8.9	52			
5	3365'	9.1	51	8.0	3k	14
6	3405'	9.2	62			
7	3475'	9.3	65			
8						
9						
10						
11						

Displaced  
LOM 3/4#  
LOM 3/4#  
LOM 3/4#

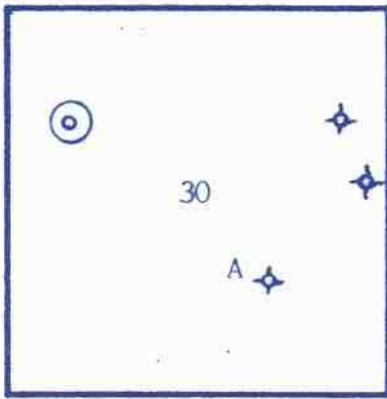
## BIT RECORD

NO	SIZE	MAKE	TYPE	DEPTH	FEET	HOURS
1	12 1/4"	Sec.	XSC	220'	220'	3 1/2
2	7 7/8"	HVCo.	GX20C	3580'	3360'	67 3/4
3						
4						
5						
6						
7						

# FORMATION TOPS & STRUCTURAL GEOLOGY

R 19 W

T  
8  
S



**REFERRED TO:**

- A: LANDMARK OIL EXPLOR.  
Wolfenden #1-30 SE NW SE 30
- B: \_\_\_\_\_
- C: \_\_\_\_\_
- D: \_\_\_\_\_
- E: \_\_\_\_\_

STRATIGRAPHIC MARKERS	SUBJECT WELL			STRUCTURAL POSITION				
	SAMPLE	E. LOG	DATUM	A	B	C	D	E
Anhydrite	1526'	1526'	+ 510	+ 540				
Base	1564'	1558'	+ 478	+ 504				
Topeka	3011'	3005'	- 969	- 965				
Heeb. Sh.	3215'	3210'	-1174	-1175				
Toronto	3239'	3231'	-1195	-1197				
Lansing	3254'	3248'	-1212	-1216				
BKc.	3474'	3467'	-1431	-1432				
Arbuckle	3509'	3500'	-1464	-1460				
TD	3580'	3577'	-1541	-1489				

Pipe strap .95' long.

\*Structural position of subject well as compared to referred well.

## SUMMARY

The Anita #1 well was drilled with Murfin Drilling Co. tools rig #16 beginning 11-16-10 and drilling was completed 11-22-10.

The drillsite was located via a 3-D seismic survey. The anhydrite was cut quite low structurally. The well thinned and was about flat to the reference well on the LKc top.

Oil shows were encountered in several zone. The best shows were the LKc E-F but were condemned by DST #1

Based upon all data, the well was plugged as a dry hole.

Respectfully,

*Randy*

Randall Kilian

NOV 1 1910 10:00 AM (10/11/10)

DRILLING TIME (min/ft)

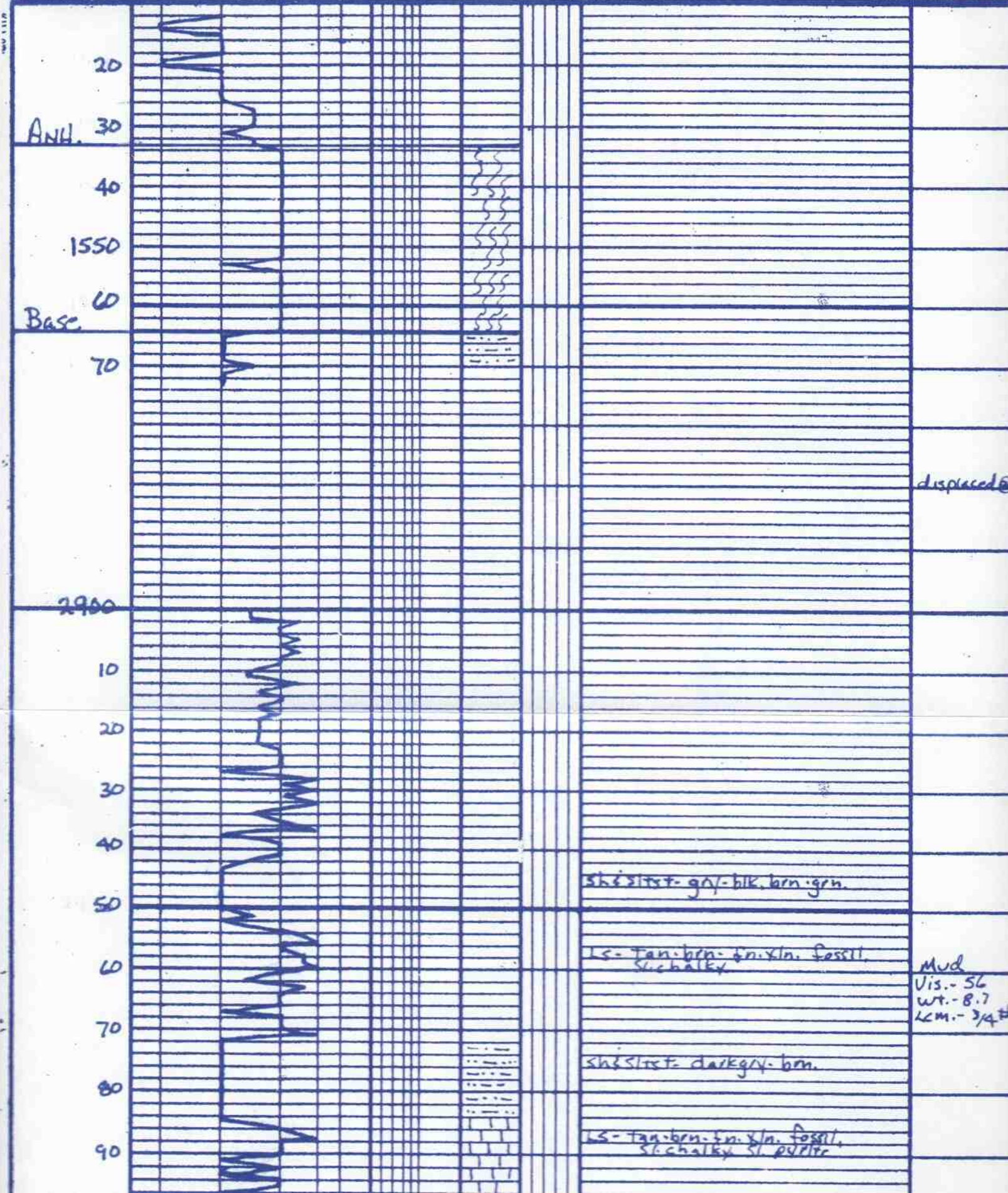
4 2 SHOWS

LITHOLOGY LABELED

REMARKS

1/2 1 2 3 4 5678910

DEPTH  
FEET



ANH.

Base

2900

displaced

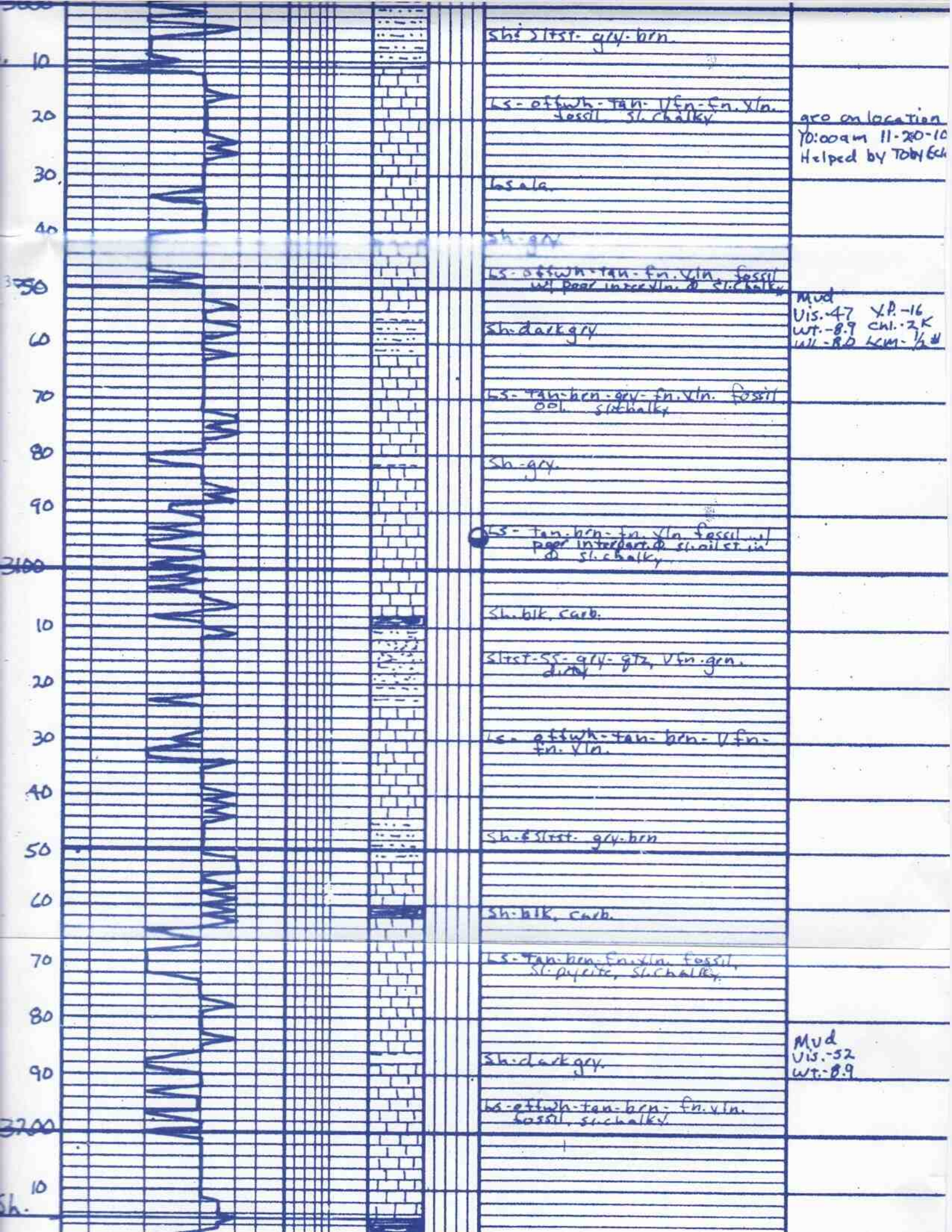
sh & siltst - gray - blk. brn. gen.

ls - tan. brn. fin. xln. fossil.  
sh. chalky

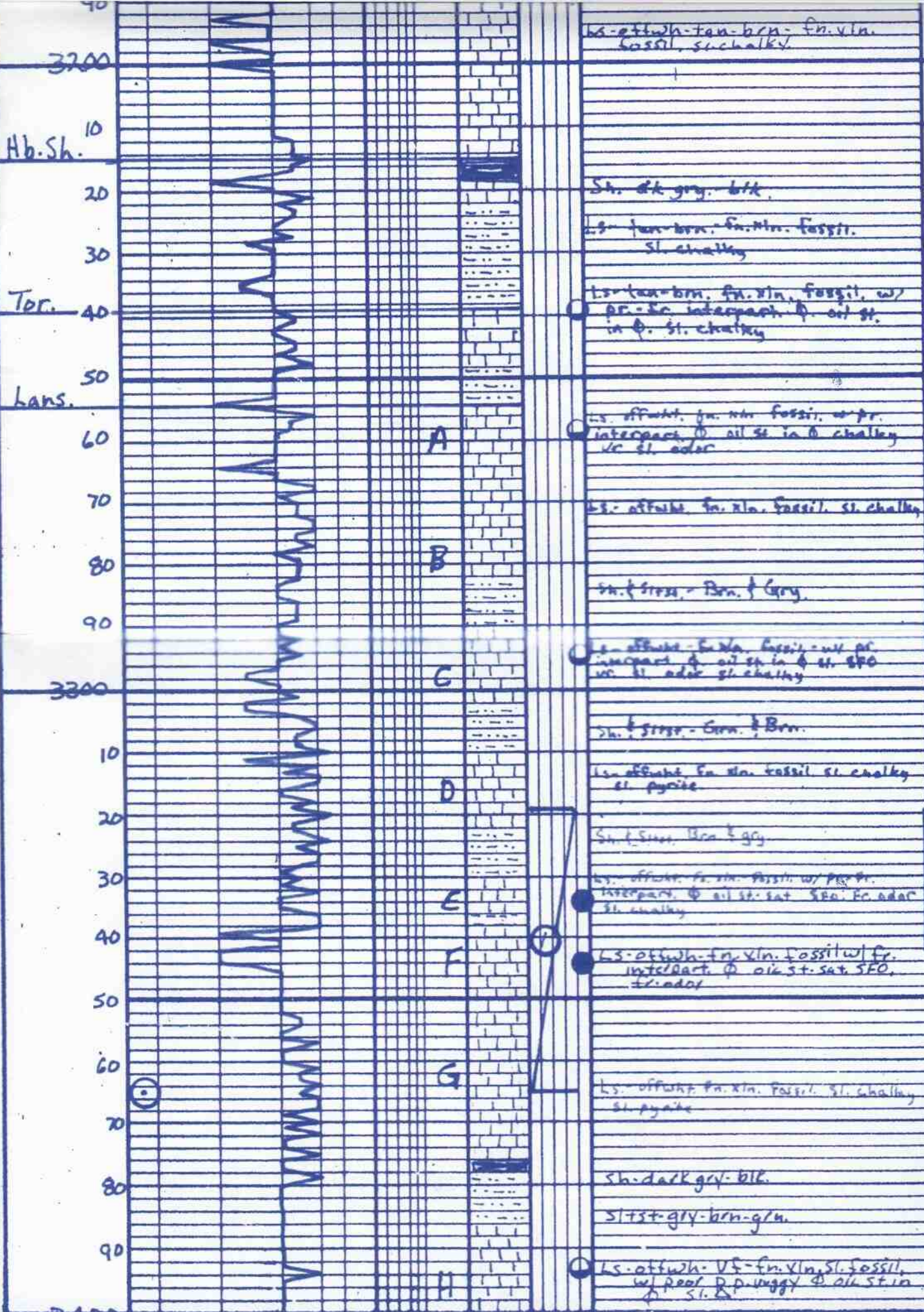
sh & siltst - dark gray - brn.

ls - tan. brn. fm. xln. fossil.  
sh. chalky sh. purple

Mud  
Vis. - 56  
wt. - 8.7  
LCM. - 3/4#







DST # 1  
 3319-3365  
 5° 60' 40"  
 128 M. W  
 F.P. SB 47.7  
 S.I.P. 1095

Mud  
 Vis. - Sl  
 wt. - 9.1  
 wk. - 80 L  
 den 1/2  
 strap. .95

Mud  
 Vis. - 67

at poor P.P. w/gyg 9.0k st. in

sh & sltst. gry. brn. gen.

Mud  
Vis. -62  
wt. 9.2

LS. offwh. tan. fn. xln. fossil  
w/ poor interpart. & sil. in slt  
in a pyrite st.

sh. gry.

LS. tan. brn. fn. xln. odw/  
pyrite

sh. darkgry. blk

sltst. gry. brn. red. gen.

LS. wh. offwh. tan. vfn. fn.  
vln. slt. fossil w/ poor vln. &  
sh. slt. st. in a slt. blk. &  
sl. a. sl. odor.

sh. darkgry. blk

LS. tan. gry. fn. xln. sl. a.

Mud  
Vis. -65  
wt. 9.3

sltst. slt. gry. vfn. gen.  
dirty

LS. tan. gry. fn. vln. fossil  
sh & sltst. gry. brn. red. gen.

LS

Dolo. LS. offwh. tan. vfn.  
xln. fine.

Dolo. offwh. tan. med. vln.  
w/ poor - slt. in slt. &  
dolo. in slt. in 20%  
at samples

Dolo. aia.

Dolo. tan. med. vln. barren. a.

Dolo. aia.

T.D. 7:30pm 11-21-10



3500

rb.

D.

3600