

Randall Kilian Corporation

Geologist



**Certified Petroleum
Geologist #3351
License #224**

P.O. Box 26
Hays, Kansas 67601-0026
Phone: 785-628-6061
Cell: 785-635-1349

GEOLOGIST'S WELL REPORT

COMPANY BACH OIL PRODUCTION (31569)

WELL Paul Lowry #1

FIELD Wildcat

LOCATION (legal) Ap. NW NE SE NE

(1370' FNL & 590' FFL)

Section 30 TWP 8S RGE 19W

(Map) 7 mi N & 2½ mi W of Zurich, Ks

COUNTY Rooks STATE Kansas

ELEVATION: 1983' K.B., 1978' G.L.

Depths measured from Kelly Bushing

A. P. I. NUMBER 15-163-23902

GEOLOGY BY Randall Kilian

PERTINENT WELL DATA

CONTRACTOR Murfin Drilling Co., Inc. (30606)

RIG #16 HYDRAULICS D-375 6x14x60
(Andy Dinkel IP)

DRILL PIPE 4 1/2" X-H COLLARS 6 1/2" 17 (503')

CASING: SURFACE 8 5/8" @ 218' w/ 150 sx Common

PRODUCTION _____

DRILLING FLUID: COMPANY Andy's Mud & Chemical Co.
(Ken Rupp)

TYPE: Chemical & Drispac

REMARKS: Full service

DRILL STEM TESTS: COMPANY _____

NUMBER OF TESTS _____

ELECTIC LOGS: COMPANY Pioneer Log-Tech Inc.

DETAIL (5") 2900' - RTD

TYPE RAG

DRILLING TIME FROM 2900' TO RTD

SAMPLE TIME FROM 2900' TO RTD

SUPERVISION FROM 2900' TO RTD

VERTICAL DEVIATION 1/2° @ 220', 3/4° @ 2036'

PLUGGING REPORT 25 sx @ 3425', 25 @ 1445', 100 @ 800', 40
260', 10 @ 40', 30 Rat, 230 sx 60/40 Poz.

RESERVE PIT 500 bbls., Chl. 22,000

DRILL STEM TESTS

NO	INTERVAL	IFP/TIME	ISIP/TIME	FFP/TIME	FSIP/TIME	IHP/FHP	RECOVERY
1							
2							
3							
4							
5							
6							
7							
8							

Displaced
LCM 3/4#
LCM 1 1/2#
LCM 1 1/2#
LCM 3/4# \$5907

MUD RECORD

CHK	DEPTH	WT	VIS	FIL	CHL	YP
1	2715'					
2	2950'	8.8	50			
3	3033'	9.1	44	7.6	1.5k	12
4	3160'	9.0	54			
5	3340'	9.2	58			
6	3440'	9.2	60			
7	3500'	9.1	50	8.8	3k	14
8						
9						
10						
11						

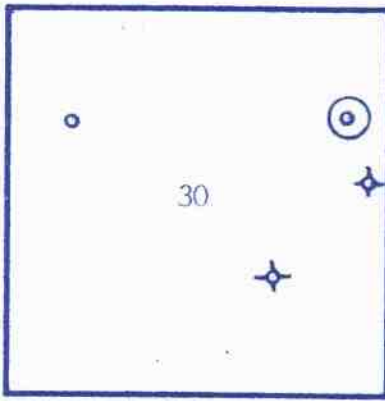
BIT RECORD

NO	SIZE	MAKE	TYPE	DEPTH	FEET	HOURS
1	12 3/4"	Sec.	XSL	220'	220'	2 1/2
2	7 7/8"	HICo.	GX20C	3500'	3280'	64 3/4
3						
4						
5						
6						
7						

FORMATION TOPS & STRUCTURAL GEOLOGY

R 19 W

T
8
S



REFERRED TO:

- A: KAISER-FRANCIS
- #1 Lowry A SE SE NE 30
- B: _____
- C: _____
- D: _____
- E: _____

STRATIGRAPHIC MARKERS	SUBJECT WELL			STRUCTURAL POSITION				
	SAMPLE	E. LOG	DATUM	A	B	C	D	E
Anhydrite	1442'	1440'	+ 543	+ 549				
Base	1483'	1470'	+ 513					
Topeka	2953'	2951'	- 968	- 958				
Heeb. Sh.	3158'	3157'	-1175	-1164				
Toronto	3179'	3177'	-1194	-1186				
Lansing	3198'	3194'	-1211	-1202				
BKc.	3413'	3411'	-1428					
Arbuckle	3447'	3440'	-1457	-1453				
TD	3500'	3500'	-1517	-1503				

*Structural position of subject well as compared to referred well.

SUMMARY

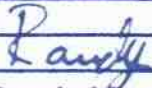
The Paul Lowry #1 well was drilled with Murfin Drilling Co tools rig #16 beginning 11-10-10 and drilling was completed 11-14-10.

The drillsite was located via a 3-D seismic survey. The well ran low structurally to nearby dry holes and about 25' lower than expected from seismic, a seismic "bust".

Poor oil shows were noted in several zones. The electric log proved all zones negative.

Based upon all data, the well was plugged as a dry hole.

Respectfully,



Randall Kilian

DRILLING TIME (min/ft)

1/2 1 2 3 4 5 6 7 8 9 10

SHOWS
POOR
FAIR
GOOD
EXCEL

LITHOLOGY (LAGGED)

REMARKS

ANH. 40

1450

60

70

Base 80

80

90

2900

10

20

30

40

Topoka 50

60

70

80

90

Displaced @

sh. siltst. - gry-brn.

ls. tan-brn-gry-fn. xln.
fossil size 4/16"

sh. siltst. - gry-brn.

ls. tan-brn-gry-fn. xln.
fossil

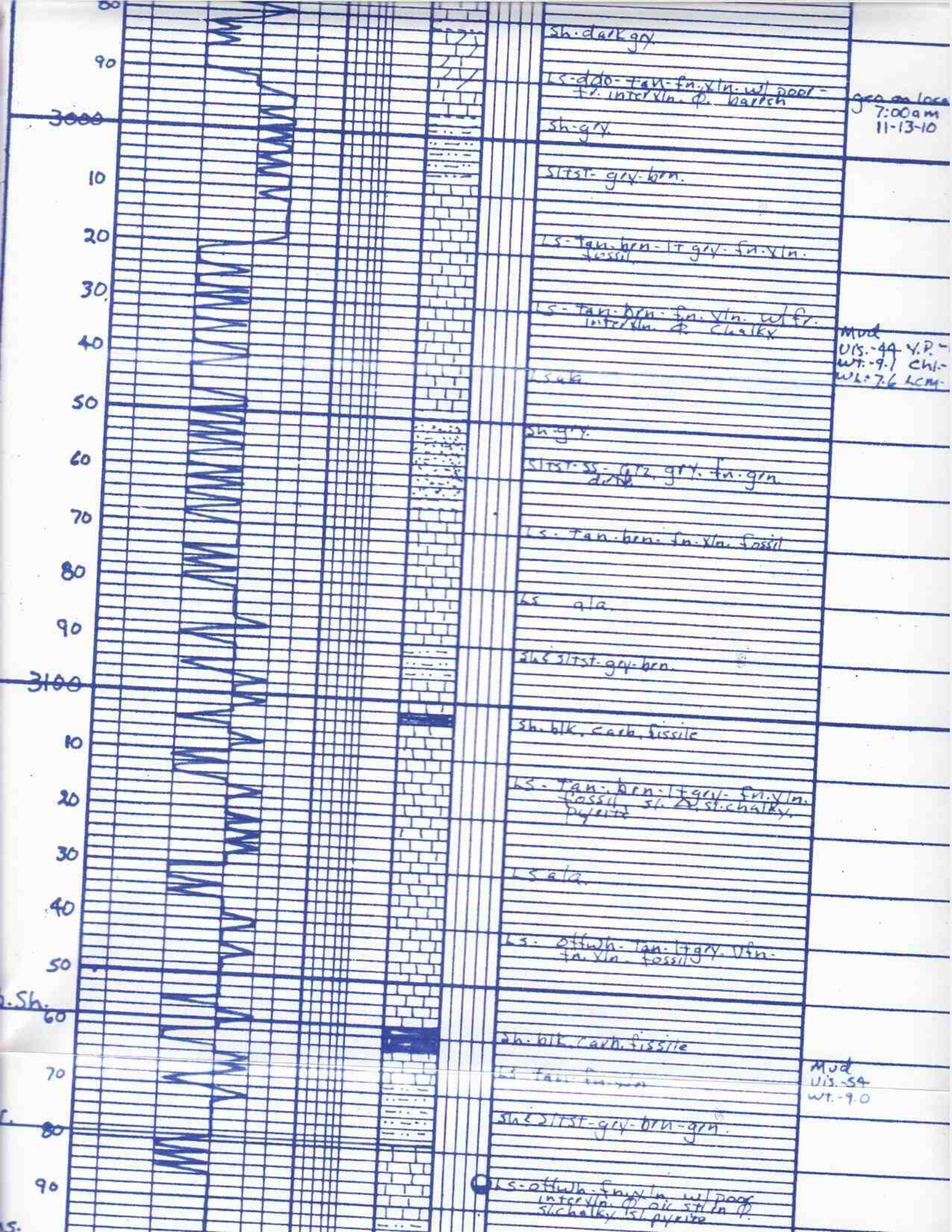
ls. a/a.

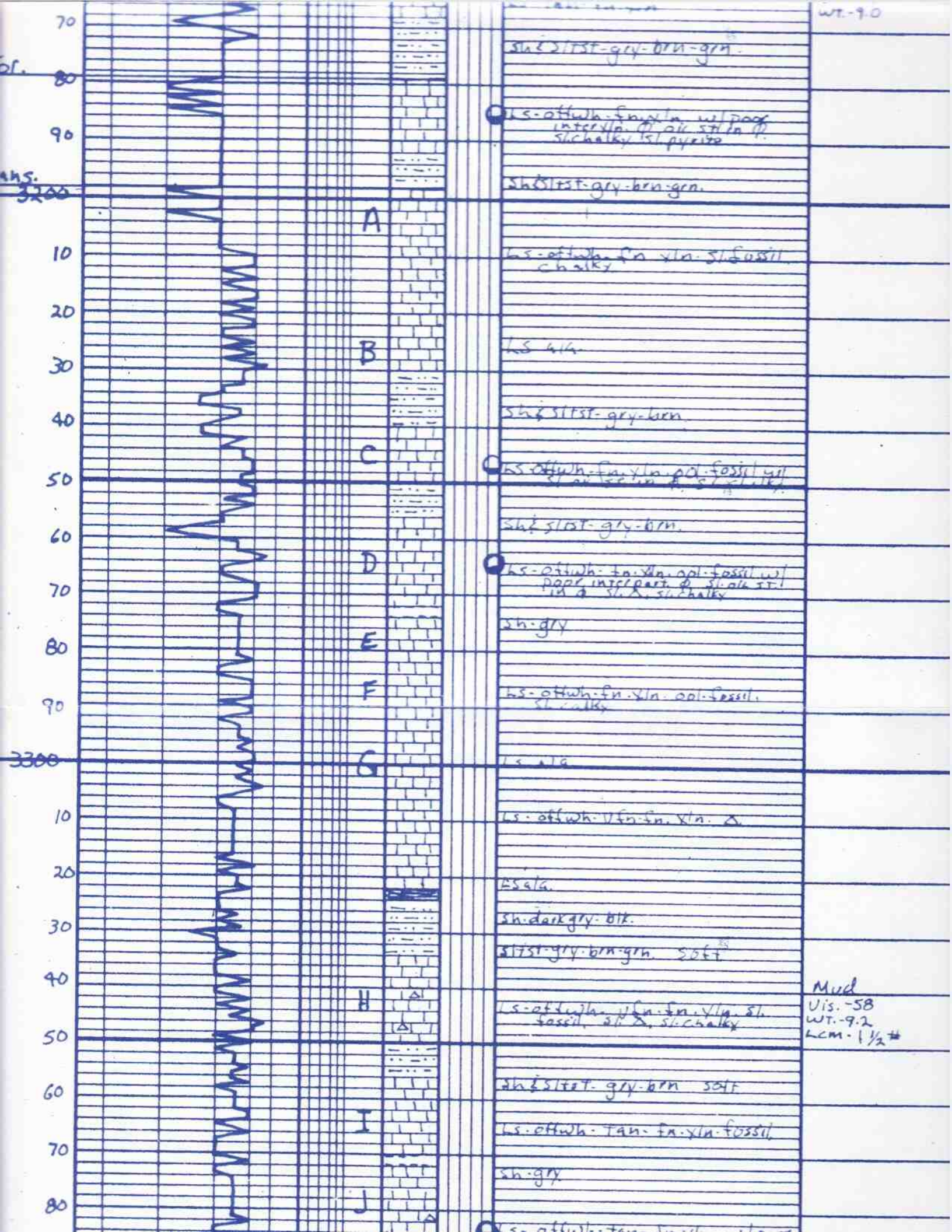
sh. dark gry

ls. ddo-tan-fn. xln. w/ pool -
f. inter xln. φ. baroch

Mud
vis. 50
wt. 88

gen on loc
7:00 am





70
80
90
10
20
30
40
50
60
70
80
90
10
20
30
40
50
60
70
80

3200
3300

A
B
C
D
E
F
G
H
I
J

sh & slt - gry-brn-grn.
 ls - offwh. - fn. vln. w/ poor intercal. of slt & sh in it. slt chalky slt pyrite
 sh & slt - gry-brn-grn.
 ls - offwh. - fn. vln. slt fossil chalky
 ls blk.
 sh & slt - gry-brn.
 ls - offwh. - fn. vln. oil fossil w/ poor intercal. of slt & sh in it. slt chalky
 sh & slt - gry-brn.
 ls - offwh. - fn. vln. oil fossil w/ poor intercal. of slt & sh in it. slt chalky
 sh - gry
 ls - offwh. - fn. vln. oil fossil. slt chalky
 ls blk.
 ls - offwh. - fn. vln. slt.
 ls blk.
 sh - dark gry - blk.
 slt - gry-brn-grn. soft
 ls - offwh. - fn. vln. slt fossil. slt & sh. slt chalky
 sh & slt - gry-brn soft
 ls - offwh. - tan. fn. vln. fossil
 sh - gry
 ls - offwh. - tan. fn. vln. fossil

Mud
Vis. -58
wt. -9.2
Lcm. - 1 1/2 #

	H	▲	Ls. offwh. tan. fn. xln. fossil. sh. sl. chalky	Mud Vis. -58 WT. -9.2 LCM. -1 1/2 #
			sh. siltst. grey-brn soft	
	I		Ls. offwh. tan. fn. xln. fossil	
			sh. gry	
	J	▲	Ls. offwh. tan. fn. xln. w/ poor interstr. sh. sl. chalky sh. siltst.	
			sh. blk. carb	
	K		siltst. gry-brn-gry soft	
		▲	Ls. offwh. tan. fn. xln. fossil. sh. chalky sh. siltst.	
	L		sh. gry. dark gr.	
			Ls. tan. fn. xln.	
			sh. siltst. gry-brn	
			siltst. ss. qtz. v. fn. gen. gry	
			Ls. tan. gry. fn. xln.	Mud Vis. -60 WT. -9.2 LCM. -1 1/2 #
			sh. siltst. gry-brn-gry soft	
		▲	Dolo. tan. fn. xln. w/ poor interstr. sh. siltst.	
		▲	Dolo. offwh. tan. fn. med xln. w/ poor fr. interstr. sh. siltst. all st. in sh. siltst.	
		▲	Dolo. ala.	
		▲	Dolo. tan. fn. med xln. xln. blk. barren.	Mud Vis. -50 WT. -14 WT. -9.1 CMI -3K WT. -8.8 LCM -3/4 #

D. 3:30 am 11-14-10

