



WELL COMPLETION FORM
WELL HISTORY - DESCRIPTION OF WELL & LEASE

OPERATOR: License # _____

Name: _____

Address 1: _____

Address 2: _____

City: _____ State: _____ Zip: _____ + _____

Contact Person: _____

Phone: (_____) _____

CONTRACTOR: License # _____

Name: _____

Wellsite Geologist: _____

Purchaser: _____

Designate Type of Completion:

- New Well Re-Entry Workover
- Oil WSW SWD SIOW
- Gas D&A ENHR SIGW
- OG GSW Temp. Abd.
- CM (Coal Bed Methane)
- Cathodic Other (Core, Expl., etc.): _____

If Workover/Re-entry: Old Well Info as follows:

Operator: _____

Well Name: _____

Original Comp. Date: _____ Original Total Depth: _____

- Deepening Re-perf. Conv. to ENHR Conv. to SWD
- Conv. to GSW
- Plug Back: _____ Plug Back Total Depth _____
- Commingled Permit #: _____
- Dual Completion Permit #: _____
- SWD Permit #: _____
- ENHR Permit #: _____
- GSW Permit #: _____

Spud Date or Recompletion Date	Date Reached TD	Completion Date or Recompletion Date
-----------------------------------	-----------------	---

API No. 15 - _____

Spot Description: _____

_____ - _____ - _____ Sec. _____ Twp. _____ S. R. _____ East West

_____ Feet from North / South Line of Section

_____ Feet from East / West Line of Section

Footages Calculated from Nearest Outside Section Corner:

- NE NW SE SW

County: _____

Lease Name: _____ Well #: _____

Field Name: _____

Producing Formation: _____

Elevation: Ground: _____ Kelly Bushing: _____

Total Depth: _____ Plug Back Total Depth: _____

Amount of Surface Pipe Set and Cemented at: _____ Feet

Multiple Stage Cementing Collar Used? Yes No

If yes, show depth set: _____ Feet

If Alternate II completion, cement circulated from: _____

feet depth to: _____ w/ _____ sx cmt.

Drilling Fluid Management Plan

(Data must be collected from the Reserve Pit)

Chloride content: _____ ppm Fluid volume: _____ bbls

Dewatering method used: _____

Location of fluid disposal if hauled offsite: _____

Operator Name: _____

Lease Name: _____ License #: _____

Quarter _____ Sec. _____ Twp. _____ S. R. _____ East West

County: _____ Permit #: _____

AFFIDAVIT

I am the affiant and I hereby certify that all requirements of the statutes, rules and regulations promulgated to regulate the oil and gas industry have been fully complied with and the statements herein are complete and correct to the best of my knowledge.

Submitted Electronically

KCC Office Use ONLY

- Letter of Confidentiality Received
Date: _____
- Confidential Release Date: _____
- Wireline Log Received
- Geologist Report Received
- UIC Distribution
- ALT I II III Approved by: _____ Date: _____



Operator Name: _____ Lease Name: _____ Well #: _____

Sec. _____ Twp. _____ S. R. _____ East West County: _____

INSTRUCTIONS: Show important tops and base of formations penetrated. Detail all cores. Report all final copies of drill stems tests giving interval tested, time tool open and closed, flowing and shut-in pressures, whether shut-in pressure reached static level, hydrostatic pressures, bottom hole temperature, fluid recovery, and flow rates if gas to surface test, along with final chart(s). Attach extra sheet if more space is needed. Attach complete copy of all Electric Wire-line Logs surveyed. Attach final geological well site report.

Drill Stem Tests Taken <input type="checkbox"/> Yes <input type="checkbox"/> No <i>(Attach Additional Sheets)</i> Samples Sent to Geological Survey <input type="checkbox"/> Yes <input type="checkbox"/> No Cores Taken <input type="checkbox"/> Yes <input type="checkbox"/> No Electric Log Run <input type="checkbox"/> Yes <input type="checkbox"/> No Electric Log Submitted Electronically <input type="checkbox"/> Yes <input type="checkbox"/> No <i>(If no, Submit Copy)</i> List All E. Logs Run:	<input type="checkbox"/> Log Formation (Top), Depth and Datum <input type="checkbox"/> Sample Name Top Datum
---	---

CASING RECORD <input type="checkbox"/> New <input type="checkbox"/> Used							
Report all strings set-conductor, surface, intermediate, production, etc.							
Purpose of String	Size Hole Drilled	Size Casing Set (In O.D.)	Weight Lbs. / Ft.	Setting Depth	Type of Cement	# Sacks Used	Type and Percent Additives

ADDITIONAL CEMENTING / SQUEEZE RECORD				
Purpose:	Depth Top Bottom	Type of Cement	# Sacks Used	Type and Percent Additives
_____ Perforate _____ Protect Casing _____ Plug Back TD _____ Plug Off Zone				

Shots Per Foot	PERFORATION RECORD - Bridge Plugs Set/Type Specify Footage of Each Interval Perforated	Acid, Fracture, Shot, Cement Squeeze Record <i>(Amount and Kind of Material Used)</i>	Depth

TUBING RECORD: Size: _____ Set At: _____ Packer At: _____ Liner Run: Yes No

Date of First, Resumed Production, SWD or ENHR. _____ Producing Method:
 Flowing Pumping Gas Lift Other (Explain) _____

Estimated Production Per 24 Hours	Oil Bbls.	Gas Mcf	Water Bbls.	Gas-Oil Ratio	Gravity
-----------------------------------	-----------	---------	-------------	---------------	---------

DISPOSITION OF GAS: <input type="checkbox"/> Vented <input type="checkbox"/> Sold <input type="checkbox"/> Used on Lease <i>(If vented, Submit ACO-18.)</i>	METHOD OF COMPLETION: <input type="checkbox"/> Open Hole <input type="checkbox"/> Perf. <input type="checkbox"/> Dually Comp. <input type="checkbox"/> Commingled <i>(Submit ACO-5)</i> <i>(Submit ACO-4)</i> <input type="checkbox"/> Other (Specify) _____	PRODUCTION INTERVAL: _____ _____
--	--	---



SUPERIOR
Hays,
Kansas

**DUAL
INDUCTION
LOG**

Company: TRANS PACIFIC OIL CORP.
Well: #1-1 CEDERBERG "A"
Field: WILDCAT
County: RUSSELL
State: KANSAS

Company: TRANS PACIFIC OIL CORPORATION
Well: #1-1 CEDERBERG "A"
Field: WILDCAT
County: RUSSELL
State: KANSAS

Location: API #: 15-167-23679-0000
1199' FNL & 779' FWL
SW - SE - NW - NW
SEC 1 TWP 11S RGE 14W
Permanent Datum: GROUND LEVEL Elevation: 1782
Log Measured From: KELLY BUSHING 5' A.G.L.
Drilling Measured From: KELLY BUSHING
Other Services: CDL/CNL
Elevation: K.B. 1787, D.F. 1785, G.L. 1782

Date	12/18/10
Run Number	ONE
Depth Driller	3367
Depth Logger	3371
Bottom Logged Interval	3369
Top Log Interval	00
Casing Driller	8 5/8" @ 261
Casing Logger	
Bit Size	7 7/8
Type Fluid in Hole	CHEMICAL MUD
Density / Viscosity	9.3/50
pH / Fluid Loss	10.0/8.8
Source of Sample	FLOWLINE
Rim @ Meas. Temp	.85 @ 60F
Rmf @ Meas. Temp	.63 @ 60F
Rmc @ Meas. Temp	1.02 @ 60F
Source of Rmf / Rmc	MEASURED
Rim @ BHT	.45 @ 112F
Time Circulation Stopped	2 HOURS
Time Logger on Bottom	
Maximum Recorded Temperature	112F
Equipment Number	680
Location	HAYS, KS.
Recorded By	JASON CAPPELLUCCI
Witnessed By	TED JOCHEMS

<<< Fold Here >>>

All interpretations are opinions based on inferences from electrical or other measurements and we cannot and do not guarantee the accuracy or correctness of any interpretation, and we shall not, except in the case of gross or willful negligence on our part, be liable or responsible for any loss, costs, damages, or expenses incurred or sustained by anyone resulting from any interpretation made by any of our officers, agents or employees. These interpretations are also subject to our general terms and conditions set out in our current Price Schedule.

Comments

THANK YOU FOR USING SUPERIOR WELL SERVICE (785) 628-6395
DIRECTIONS
RUSSELL KS. - N. TO 281 & 18 JCT. - 1/2 E. TO RD 186 - 1 N. - 3/4 E. - S. INTO

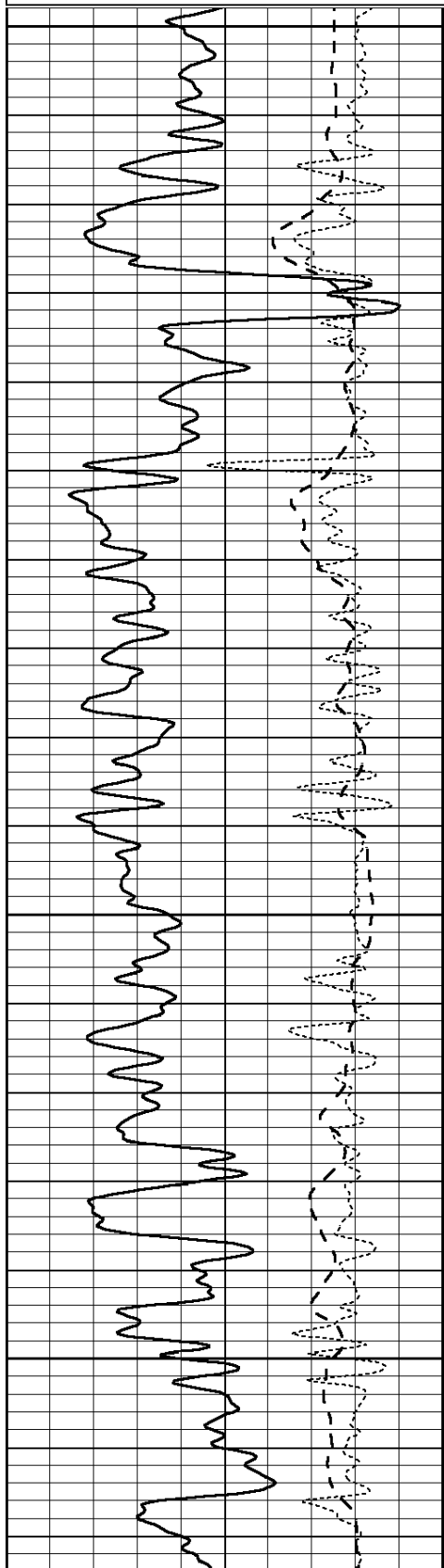


SUPERIOR
Hays,
Kansas

MAIN SECTION

Database File: 006434ddn.db
 Dataset Pathname: pass3.1
 Presentation Format: _dil
 Dataset Creation: Sat Dec 18 08:16:57 2010 by Calc Open-Cased 090629
 Charted by: Depth in Feet scaled 1:240

0	GAMMA RAY (GAPI)	150	0.2	SHALLOW GUARD (Ohm-m)	2000
-100	SP (mV)	100	0.2	MEDIUM INDUCTION (Ohm-m)	2000
-250	Rxo/Rt	50	0.2	DEEP INDUCTION (Ohm-m)	2000

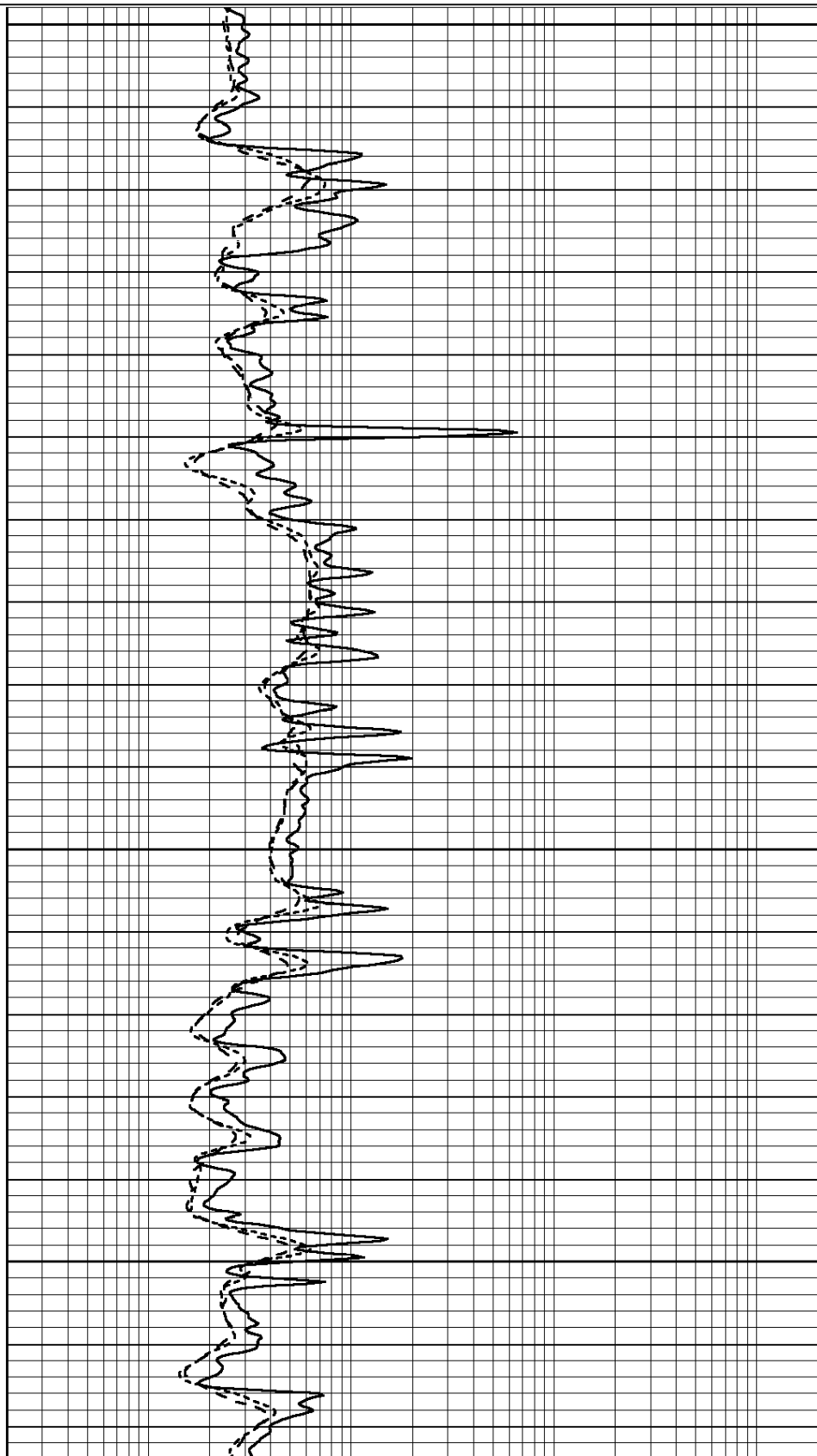


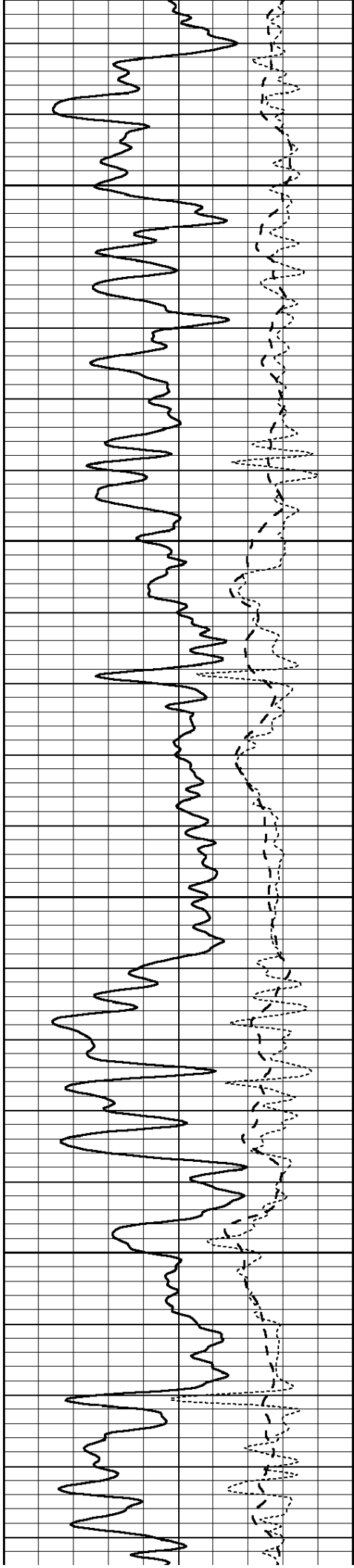
2200

2250

2300

2350



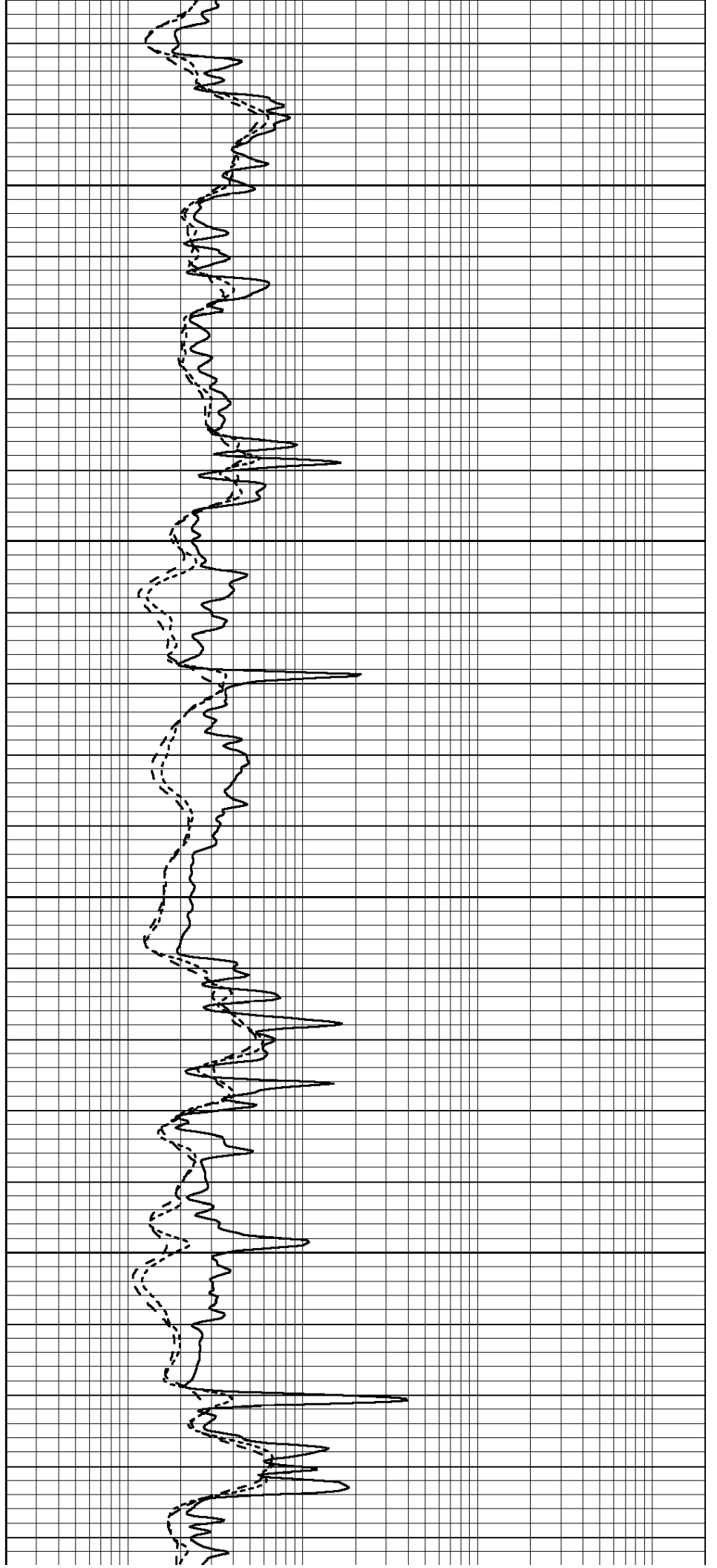


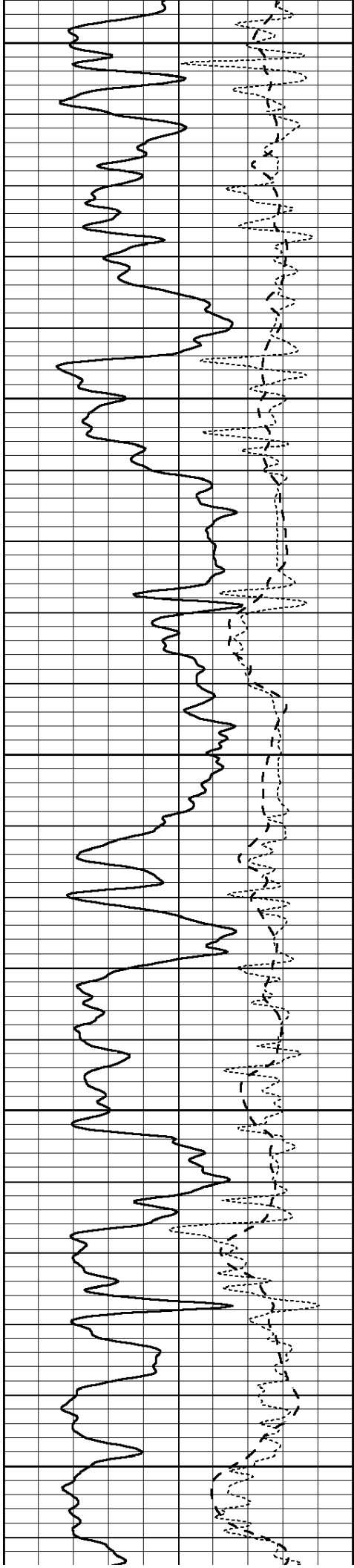
2400

2450

2500

2550





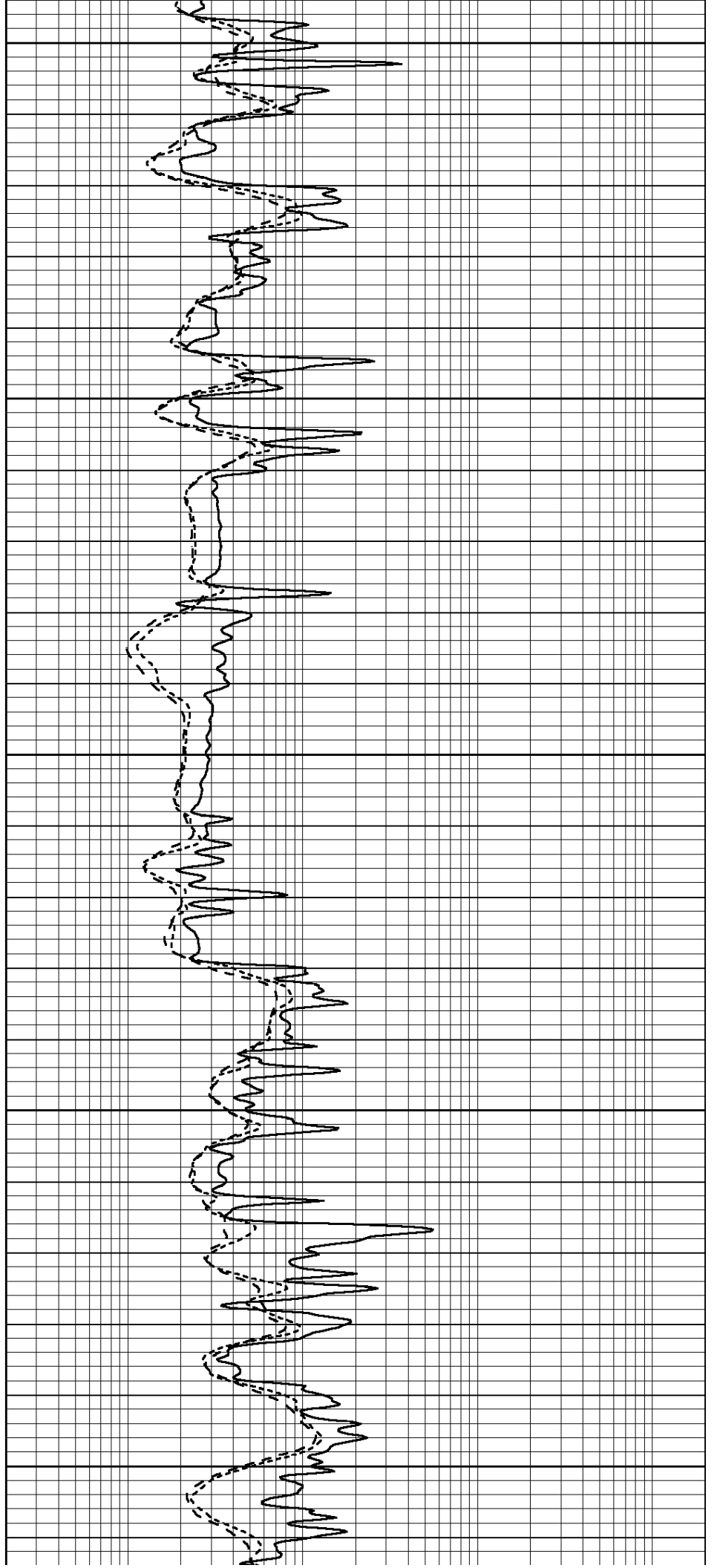
2600

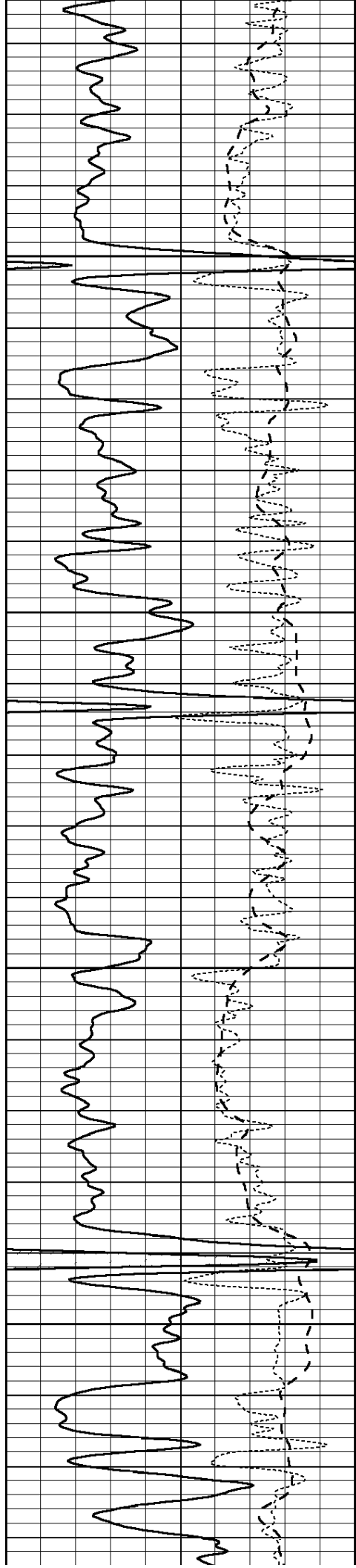
2650

2700

2750

2800



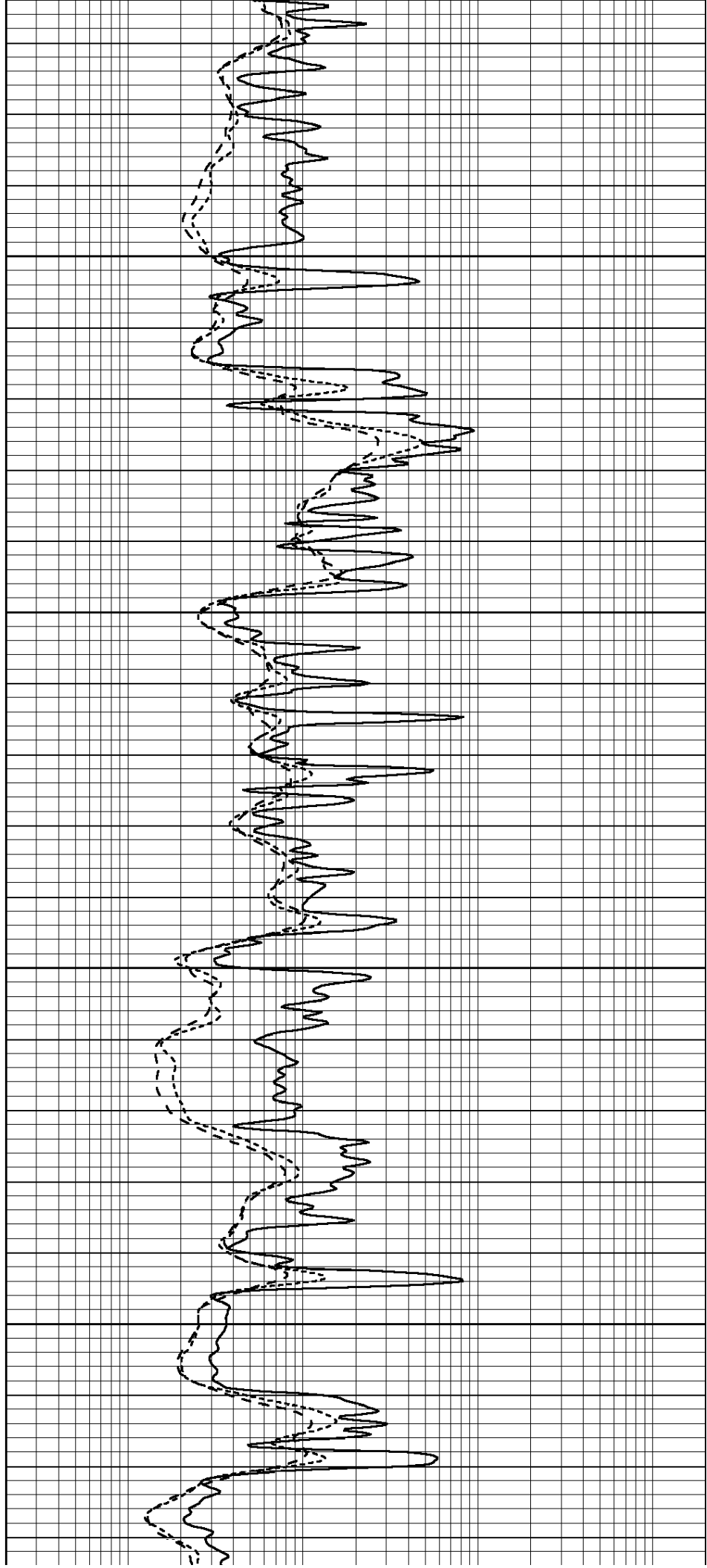


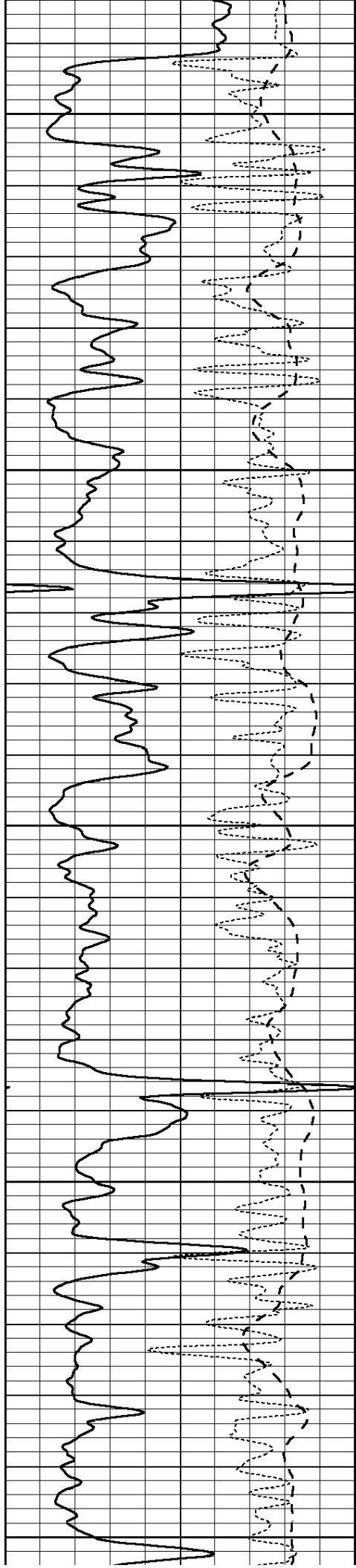
2850

2900

2950

3000





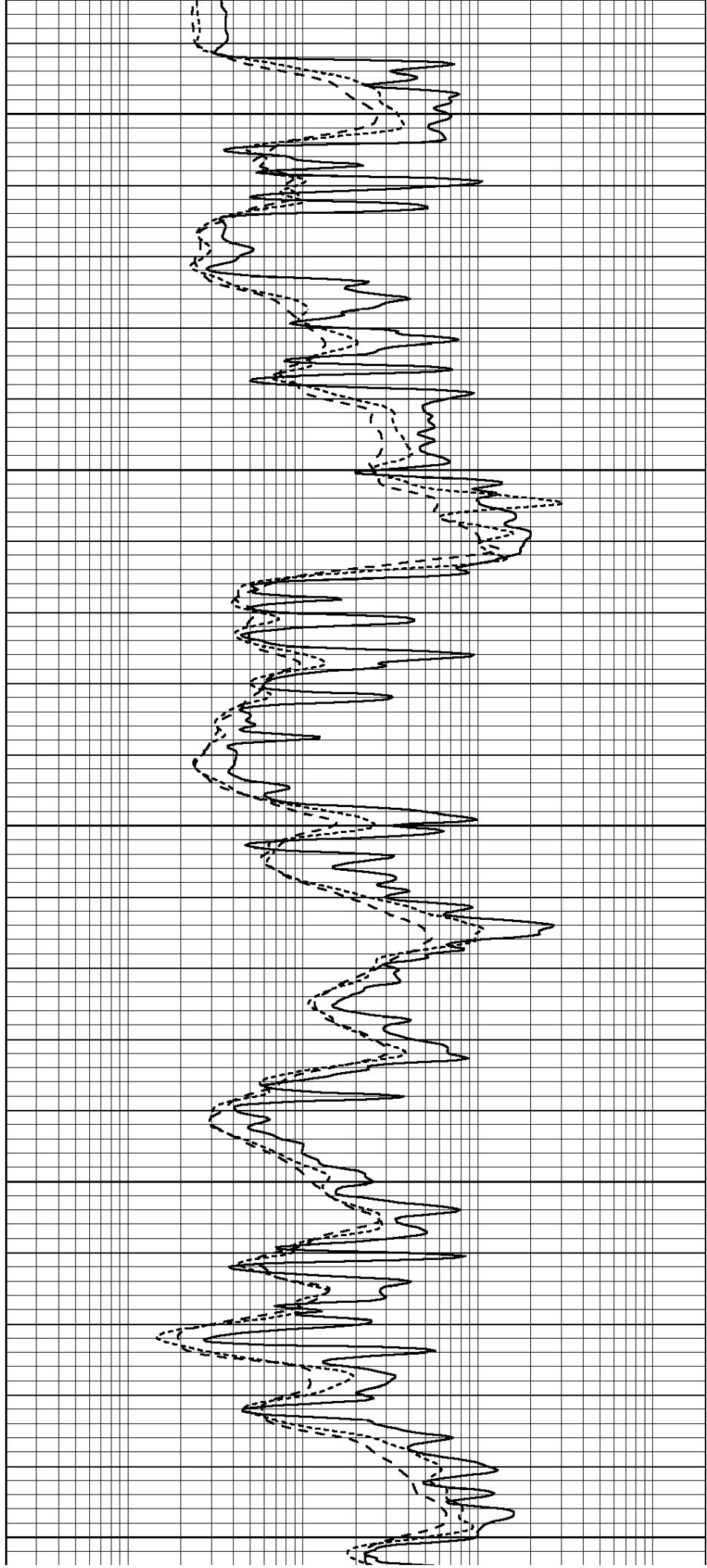
3050

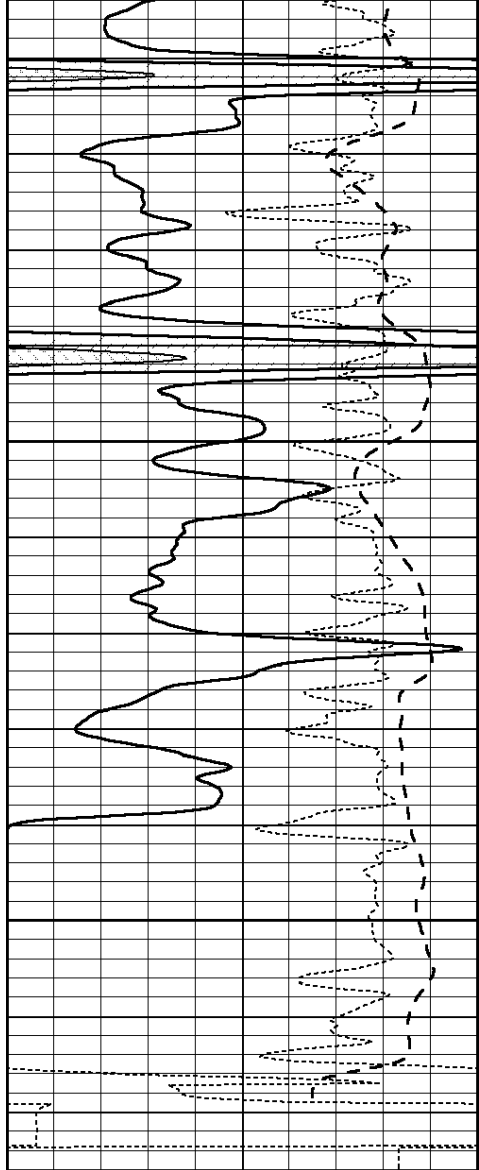
3100

3150

3200

3250

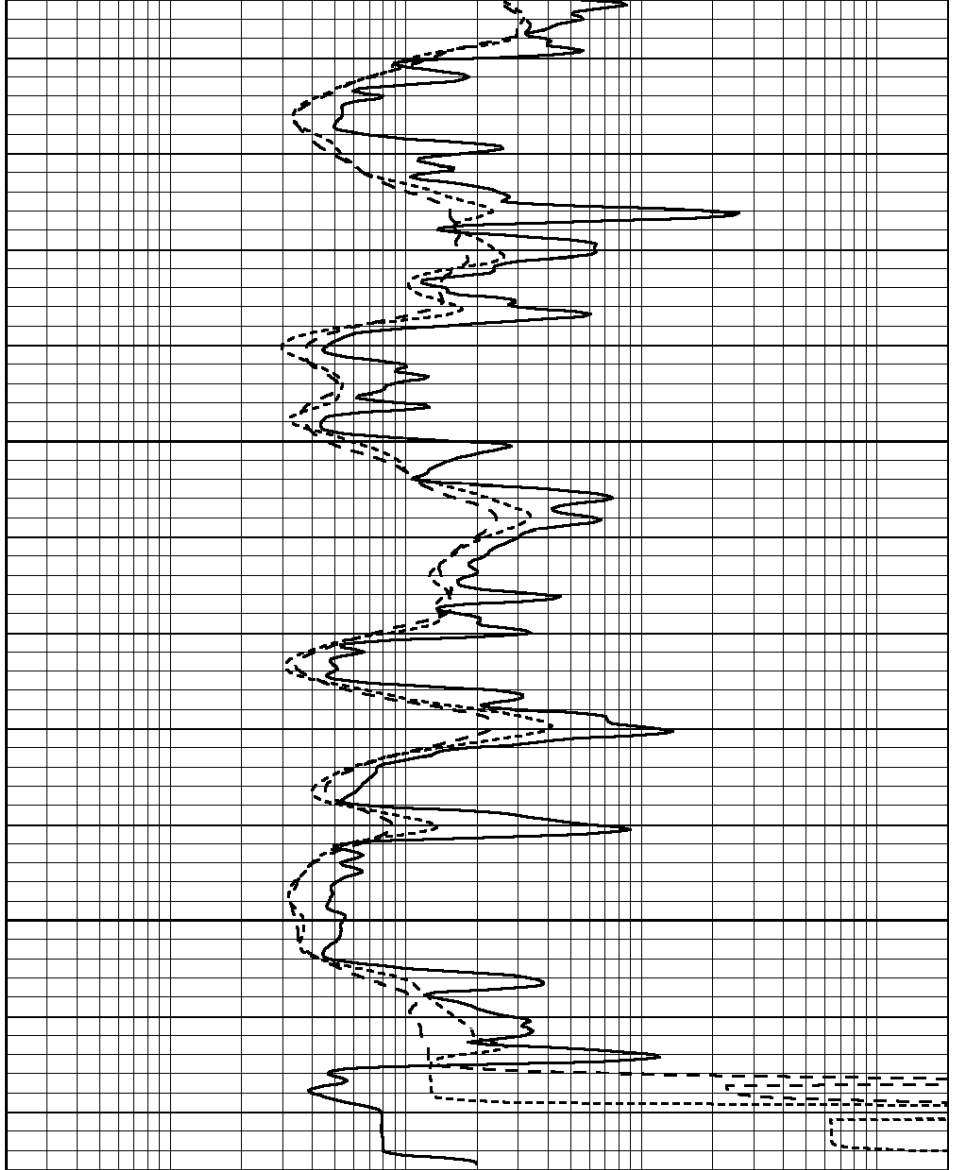




3300

3350

0	GAMMA RAY (GAPI)	150
-100	SP (mV)	100
-250	Rxo/Rt	50



0.2	SHALLOW GUARD (Ohm-m)	2000
0.2	MEDIUM INDUCTION (Ohm-m)	2000
0.2	DEEP INDUCTION (Ohm-m)	2000



SUPERIOR
Hays,
Kansas

**COMPENSATED
NEUTRON / DENSITY
LOG**

Company: TRANS PACIFIC OIL CORP.
Well: #1-1 CEDERBERG "A"
Field: WILDCAT
County: RUSSELL
State: KANSAS

Company: TRANS PACIFIC OIL CORPORATION
Well: #1-1 CEDERBERG "A"
Field: WILDCAT
County: RUSSELL
State: KANSAS

Location: API #: 15-167-23679-0000
1199' FNL & 779' FWL
SW - SE - NW - NW
SEC 1 TWP 11S RGE 14W
Permanent Datum: GROUND LEVEL Elevation: 1782
Log Measured From: KELLY BUSHING 5' A.G.L.
Drilling Measured From: KELLY BUSHING
Other Services: DIL
Elevation: K.B. 1787, D.F. 1785, G.L. 1782

Date	12/18/10
Run Number	ONE
Depth Driller	3367
Depth Logger	3371
Bottom Logged Interval	3347
Top Log Interval	2200
Casing Driller	8 5/8" @ 261
Casing Logger	
Bit Size	7 7/8
Type Fluid in Hole	CHEMICAL MUD
Density / Viscosity	9.3/50
pH / Fluid Loss	10.0/8.8
Source of Sample	FLOWLINE
Rim @ Meas. Temp	.85 @ 60F
Rmf @ Meas. Temp	.63 @ 60F
Rmc @ Meas. Temp	1.02 @ 60F
Source of Rmf / Rmc	MEASURED
Rim @ BHT	.45 @ 112F
Time Circulation Stopped	2 HOURS
Time Logger on Bottom	
Maximum Recorded Temperature	112F
Equipment Number	680
Location	HAYS, KS.
Recorded By	JASON CAPPELLUCCI
Witnessed By	TED JOCHEMS

<<< Fold Here >>>

All interpretations are opinions based on inferences from electrical or other measurements and we cannot and do not guarantee the accuracy or correctness of any interpretation, and we shall not, except in the case of gross or willful negligence on our part, be liable or responsible for any loss, costs, damages, or expenses incurred or sustained by anyone resulting from any interpretation made by any of our officers, agents or employees. These interpretations are also subject to our general terms and conditions set out in our current Price Schedule.

Comments

THANK YOU FOR USING SUPERIOR WELL SERVICE (785) 628-6395
DIRECTIONS
RUSSELL KS. - N. TO 281 & 18 JCT. - 1/2 E. TO RD 186 - 1 N. - 3/4 E. - S. INTO

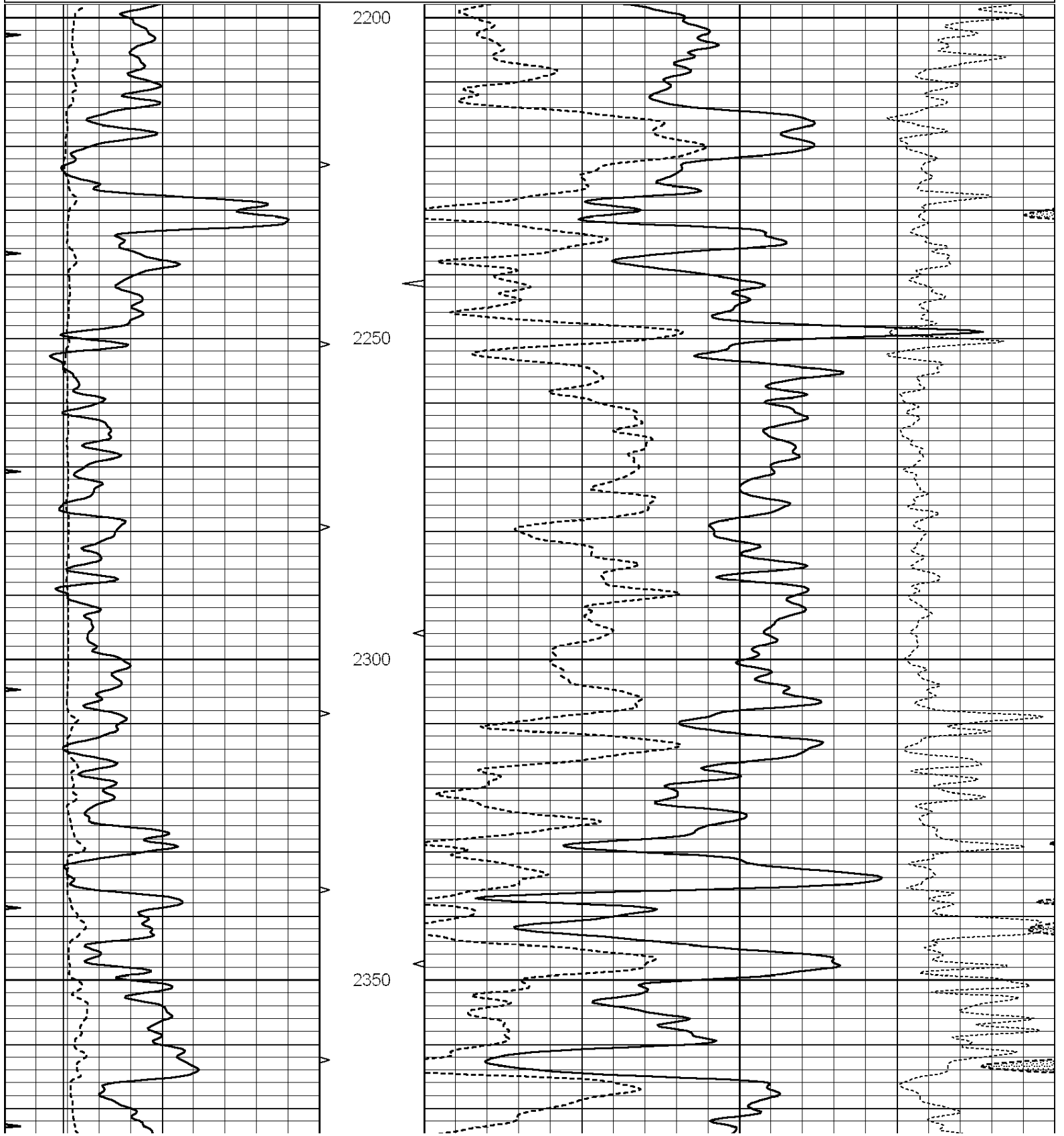


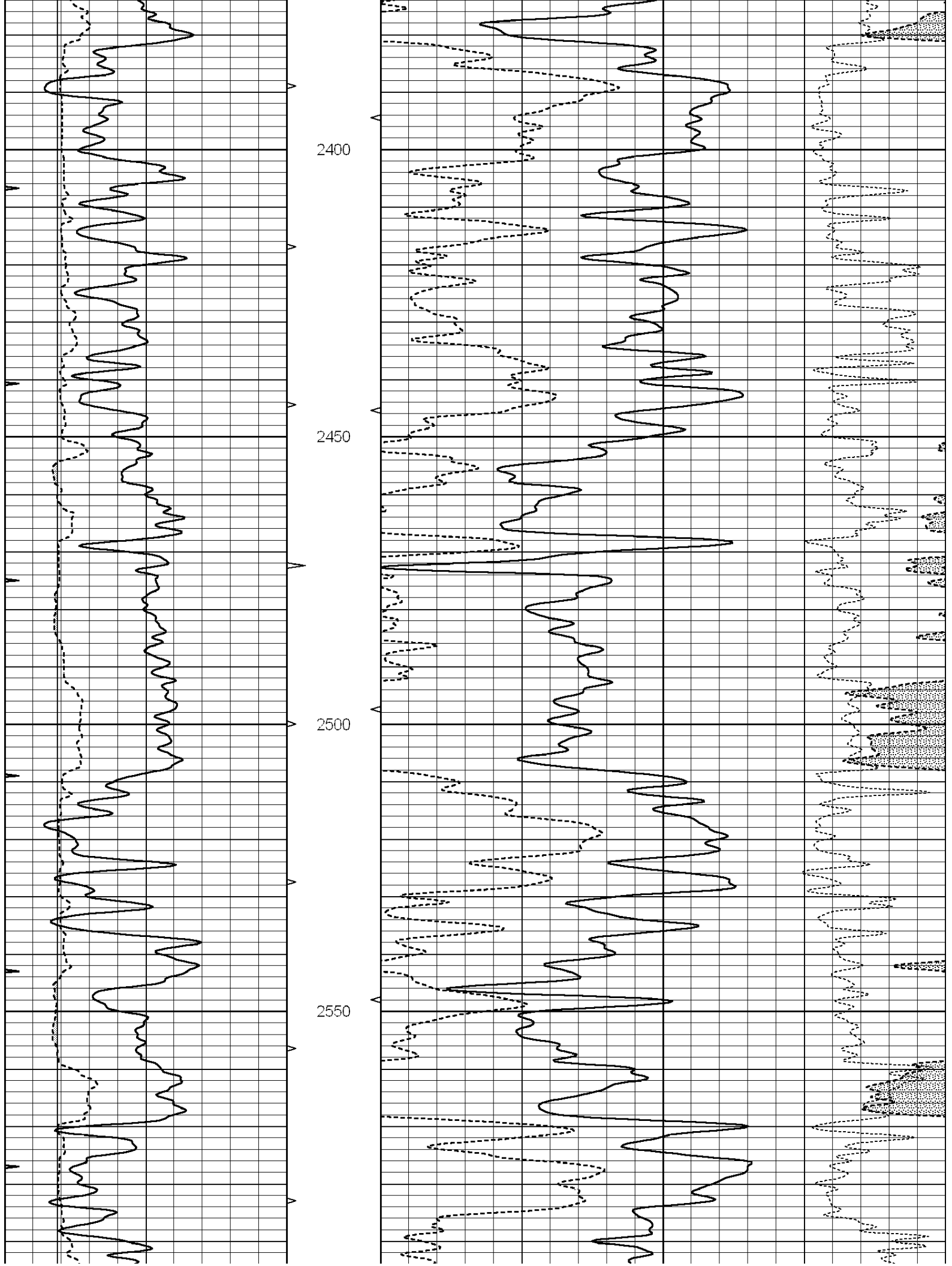
SUPERIOR
Hays,
Kansas

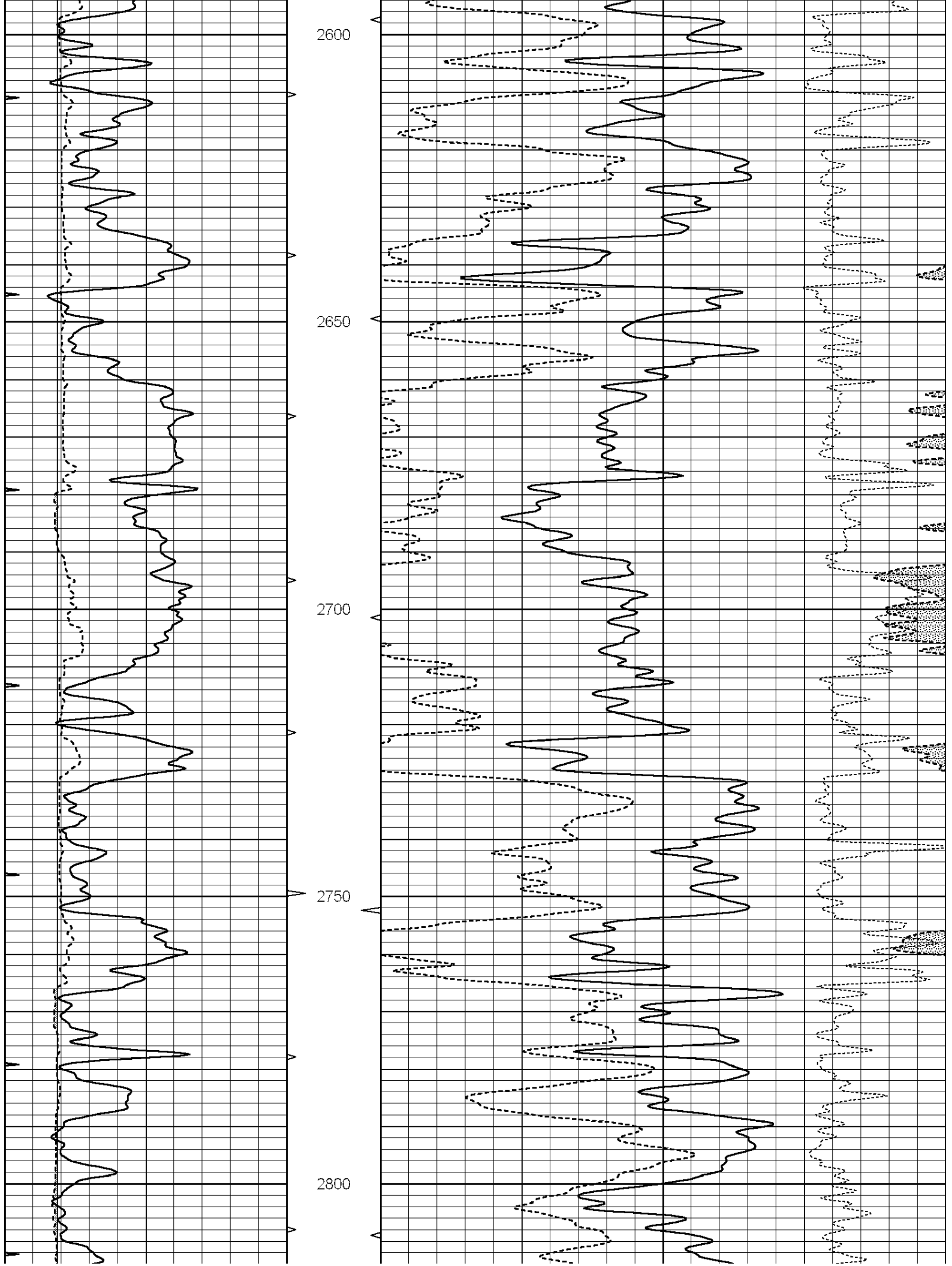
MAIN SECTION

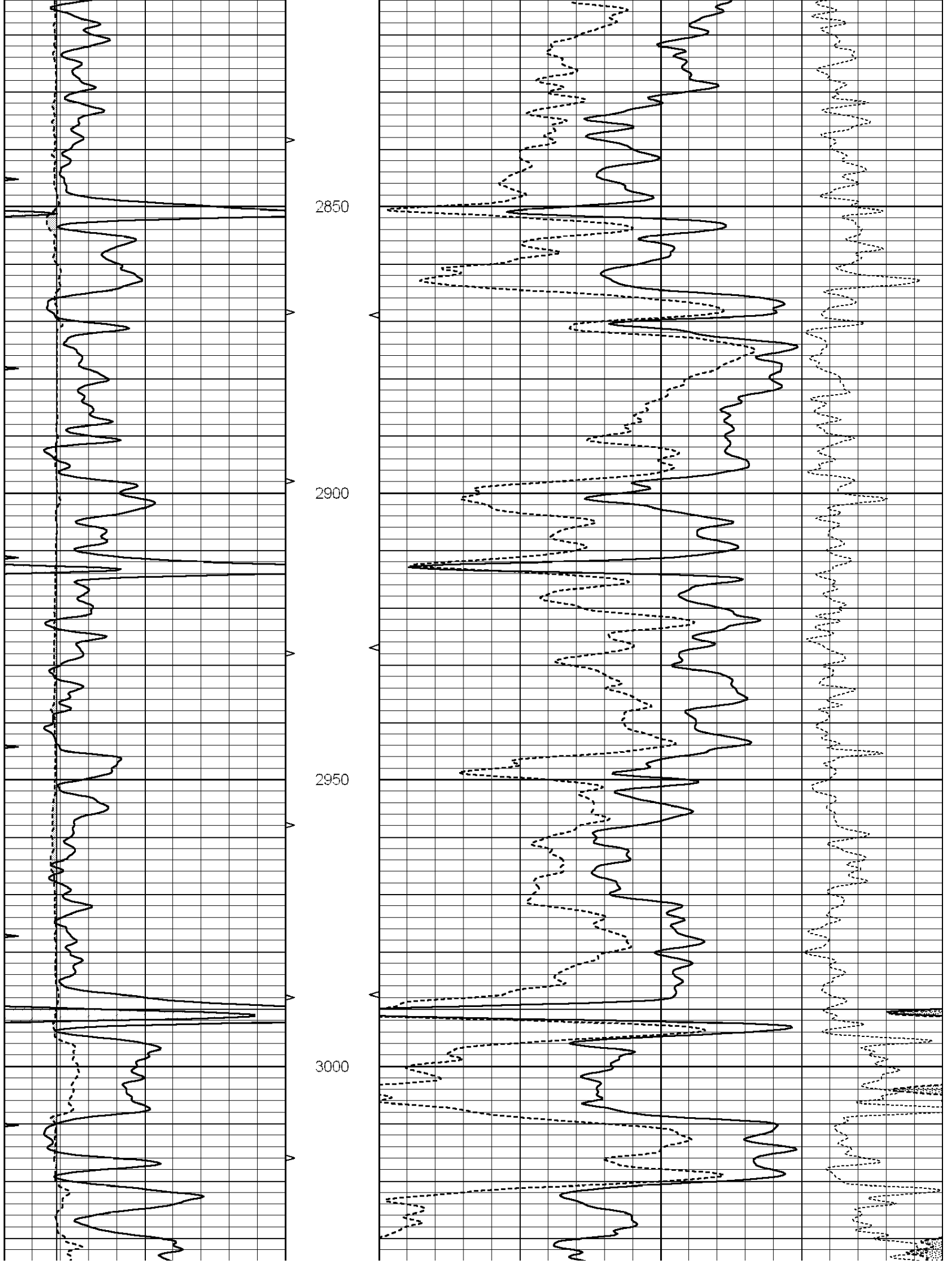
Database File: 006434ddn.db
 Dataset Pathname: pass3.1
 Presentation Format: _den_neu
 Dataset Creation: Sat Dec 18 08:16:57 2010 by Calc Open-Cased 090629
 Charted by: Depth in Feet scaled 1:240

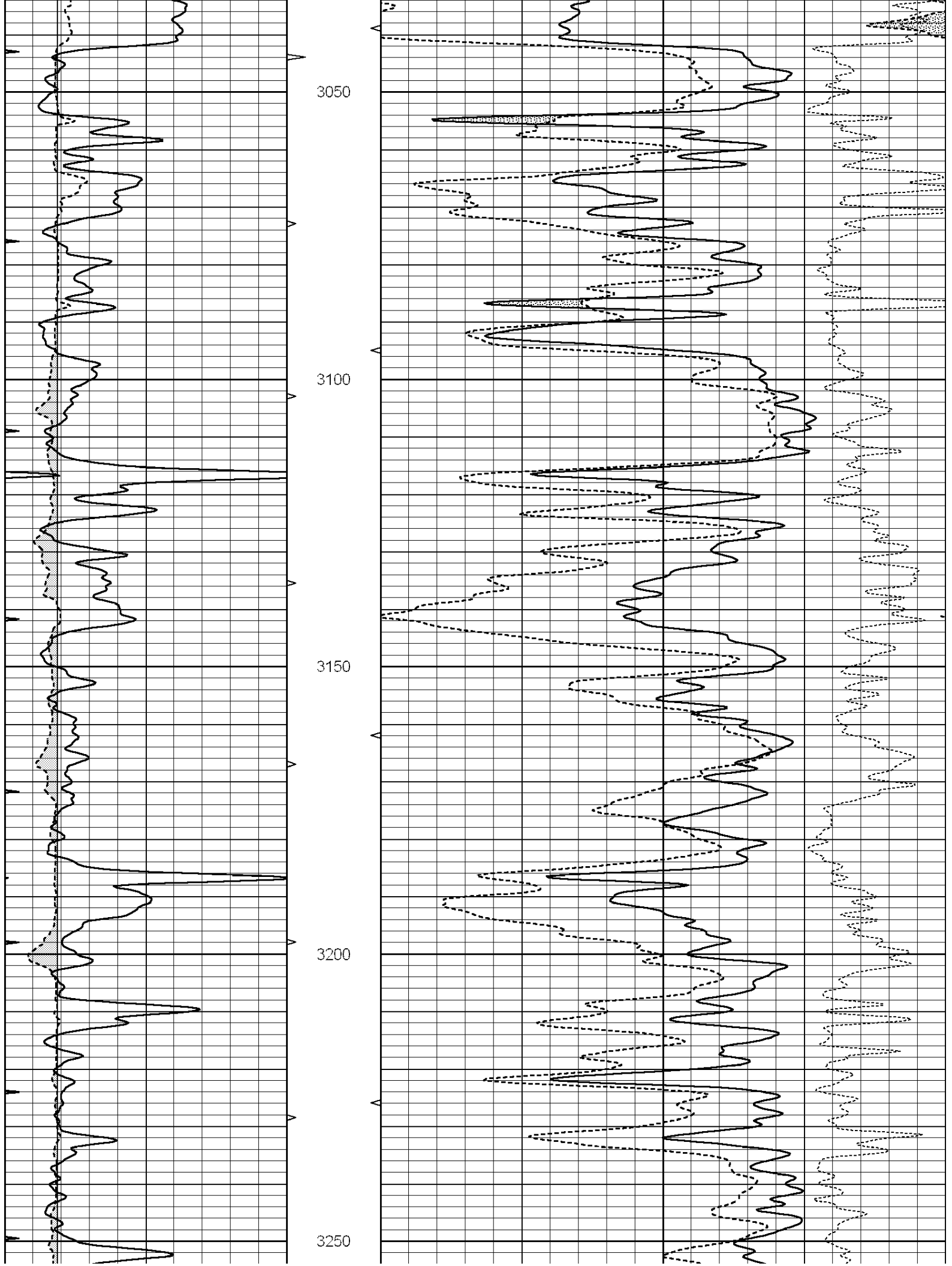
0	GAMMA RAY (GAPI)	150	AVTX	30	COMPENSATED DENSITY (pu)	-10
6	CALIPER (in)	16	10 (ft3)	0 30	COMPENSATED NEUTRON (pu)	-10
0	MINMK	20	BVTX		-0.25 CORRECTION (g/cc)	0.25
			0 (ft3)	10		

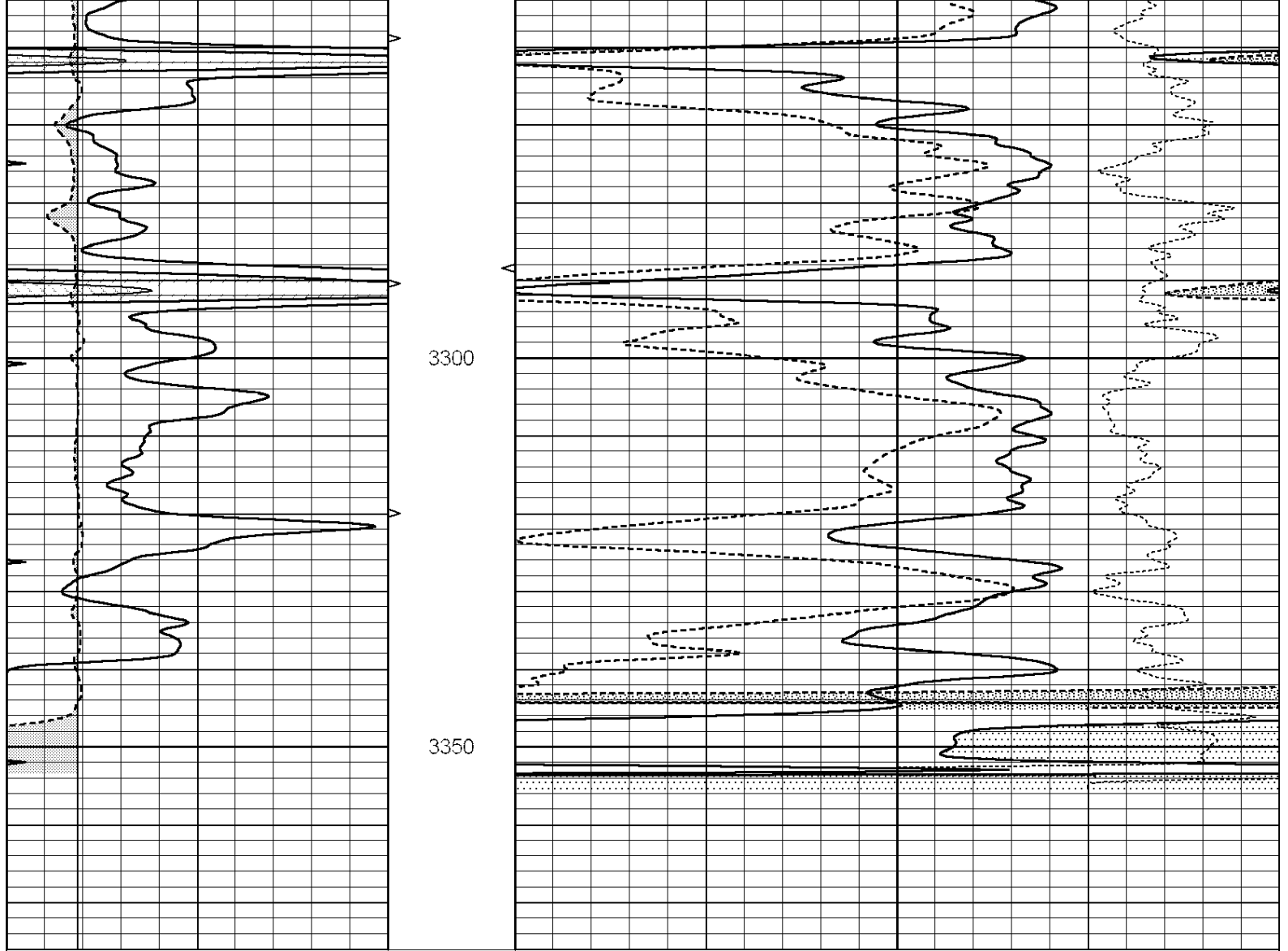












0	GAMMA RAY (GAPI)	150	AVTX	30	COMPENSATED DENSITY (pu)	-10
6	CALIPER (in)	16	10 (ft3)	0 30	COMPENSATED NEUTRON (pu)	-10
0	MINMK	20	BVTX		-0.25 CORRECTION (g/cc)	0.25
			0 (ft3)	10		

Well Cederberg A 1-1

STR:1-11S-14W

Cty: Russell

State: Kansas

Log Tops:

Anhydrite	902' (+885) -12'
B/Anhydrite	939' (+848) -14'
Grand Haven	2435' (-648) -15'
Stotler	2508' (-721) -15'
Topeka	2766' (-979) -16'
Heebner	2988' (-1201) -20'
Lansing	3042' (-1255) -20'
Stark	3260' (-1473) -19'
BKC	3320' (-1533) -17'
RTD	3367' (-1580)



DRILL STEM TEST REPORT

Prepared For: **TRANS PACIFIC OIL CORPORATION**

100 S MAIN STE 200 WICHITA KS
67202+3735

ATTN:

1 -11 -14 RUSSELL

CEDERBERG 'A' #1-1

Start Date: 2010.12.16 @ 12:47:00

End Date: 2010.12.16 @ 19:45:00

Job Ticket #: 15696 DST #: 1

Superior Testers Enterprises LLC
PO Box 138 Great Bend KS 67530
1-800-792-6902

Printed: 2010.12.16 @ 18:56:02



DRILL STEM TEST REPORT

TRANS PACIFIC OIL CORPORATION

CEDERBERG 'A' #1-1

100 S MAIN STE 200 WICHITA KS 67202+3735

1 -11 -14 RUSSELL

Job Ticket: 15696

DST#: 1

ATTN:

Test Start: 2010.12.16 @ 12:47:00

GENERAL INFORMATION:

Formation: **LKC 35' ZONE**

Deviated: No Whipstock: ft (KB)

Time Tool Opened: 14:25:30

Time Test Ended: 19:45:00

Test Type: Conventional Bottom Hole (Initial)

Tester: JARED SCHECK

Unit No: 3320-GB-120

Interval: 3045.00 ft (KB) To 3080.00 ft (KB) (TVD)

Reference Elevations: 1789.00 ft (KB)

Total Depth: 3080.00 ft (KB) (TVD)

1782.00 ft (CF)

Hole Diameter: 7.88 inches Hole Condition: Poor

KB to GR/CF: 7.00 ft

Serial #: 8419

Inside

Press@RunDepth: 61.62 psia @ 3076.00 ft (KB)

Capacity: 5000.00 psia

Start Date: 2010.12.16

End Date: 2010.12.16

Last Calib.: 2010.12.16

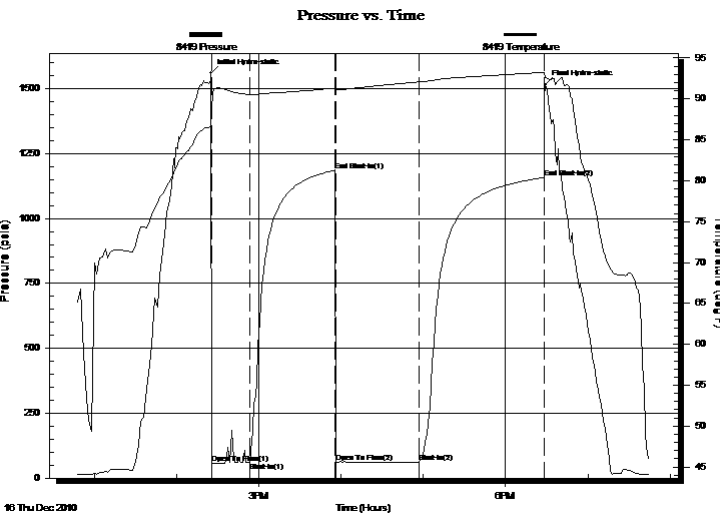
Start Time: 12:47:00

End Time: 19:45:00

Time On Btm: 2010.12.16 @ 14:25:00

Time Off Btm: 2010.12.16 @ 18:29:00

TEST COMMENT: 30/INITIAL OPEN:WEAK BLOW BUILT 2 1/2 INCHES INTO WATER IN 30 MINUTES
 60/INITIAL SHUT IN:NO BLOW BACK
 60/FINAL OPEN:VERY WEAK SURFACE BLOW BUILT 1/2 INCH INTO WATER IN 60 MINUTES
 90/FINAL SHUT IN:NO BLOW BACK



PRESSURE SUMMARY

Time (Min.)	Pressure (psia)	Temp (deg F)	Annotation
0	1559.51	87.95	Initial Hydro-static
1	56.39	88.59	Open To Flow (1)
29	61.70	90.53	Shut-In(1)
91	1185.59	91.32	End Shut-In(1)
92	60.98	91.09	Open To Flow (2)
152	61.62	92.08	Shut-In(2)
243	1157.68	93.25	End Shut-In(2)
244	1514.64	92.64	Final Hydro-static

Recovery

Length (ft)	Description	Volume (bbl)
40.00	MUD	0.56

Gas Rates

Choke (inches)	Pressure (psia)	Gas Rate (Mcf/d)



DRILL STEM TEST REPORT

TRANS PACIFIC OIL CORPORATION

CEDERBERG 'A' #1-1

100 S MAIN STE 200 WICHITA KS 67202+3735

1 -11 -14 RUSSELL

Job Ticket: 15696

DST#: 1

ATTN:

Test Start: 2010.12.16 @ 12:47:00

GENERAL INFORMATION:

Formation: **LKC 35' ZONE**

Deviated: No Whipstock: ft (KB)

Time Tool Opened: 14:25:30

Time Test Ended: 19:45:00

Test Type: Conventional Bottom Hole (Initial)

Tester: JARED SCHECK

Unit No: 3320-GB-120

Interval: 3045.00 ft (KB) To 3080.00 ft (KB) (TVD)

Reference Elevations: 1789.00 ft (KB)

Total Depth: 3080.00 ft (KB) (TVD)

1782.00 ft (CF)

Hole Diameter: 7.88 inches Hole Condition: Poor

KB to GR/CF: 7.00 ft

Serial #: 4005 Outside

Press@RunDepth: 1153.76 psia @ 3077.00 ft (KB)

Capacity: 5000.00 psia

Start Date: 2010.12.16

End Date: 2010.12.16

Last Calib.: 2010.12.16

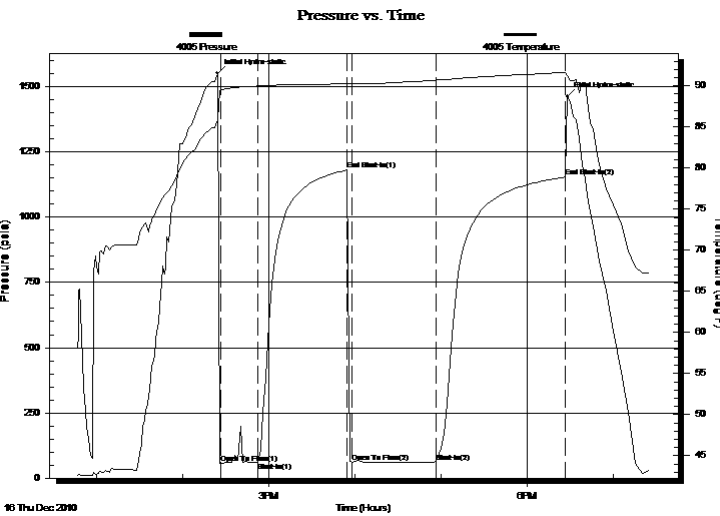
Start Time: 12:47:00

End Time: 19:25:09

Time On Btm: 2010.12.16 @ 14:24:10

Time Off Btm: 2010.12.16 @ 18:28:10

TEST COMMENT: 30/INITIAL OPEN:WEAK BLOW BUILT 2 1/2 INCHES INTO WATER IN 30 MINUTES
 60/INITIAL SHUT IN:NO BLOW BACK
 60/FINAL OPEN:VERY WEAK SURFACE BLOW BUILT 1/2 INCH INTO WATER IN 60 MINUTES
 90/FINAL SHUT IN:NO BLOW BACK



PRESSURE SUMMARY

Time (Min.)	Pressure (psia)	Temp (deg F)	Annotation
0	1551.71	85.90	Initial Hydro-static
2	58.39	89.38	Open To Flow (1)
28	61.64	89.98	Shut-In(1)
90	1180.32	90.27	End Shut-In(1)
94	61.02	90.24	Open To Flow (2)
152	62.63	90.69	Shut-In(2)
242	1153.76	91.64	End Shut-In(2)
244	1462.13	91.30	Final Hydro-static

Recovery

Length (ft)	Description	Volume (bbl)
40.00	MUD	0.56

Gas Rates

Choke (inches)	Pressure (psia)	Gas Rate (Mcf/d)



DRILL STEM TEST REPORT

TOOL DIAGRAM

TRANS PACIFIC OIL CORPORATION
 100 S MAIN STE 200 WICHITA KS 67202+3735
 ATTN:

CEDERBERG 'A' #1-1
1 -11 -14 RUSSELL
 Job Ticket: 15696 **DST#: 1**
 Test Start: 2010.12.16 @ 12:47:00

Tool Information

Drill Pipe:	Length: 3028.00 ft	Diameter: 3.80 inches	Volume: 42.47 bbl	Tool Weight: 1000.00 lb
Heavy Wt. Pipe:	Length: 0.00 ft	Diameter: 0.00 inches	Volume: 0.00 bbl	Weight set on Packer: 20000.00 lb
Drill Collar:	Length: 0.00 ft	Diameter: 0.00 inches	Volume: 0.00 bbl	Weight to Pull Loose: 48000.00 lb
			<u>Total Volume: 42.47 bbl</u>	Tool Chased 6.00 ft
Drill Pipe Above KB:	6.00 ft			String Weight: Initial 33000.00 lb
Depth to Top Packer:	3045.00 ft			Final 33000.00 lb
Depth to Bottom Packer:	ft			
Interval between Packers:	35.00 ft			
Tool Length:	58.00 ft			
Number of Packers:	2	Diameter: 6.75 inches		

Tool Comments:

Tool Description	Length (ft)	Serial No.	Position	Depth (ft)	Accum. Lengths
Change Over Sub	1.00			3023.00	
Shut-In Tool	5.00			3028.00	
Hydraulic Tool	5.00			3033.00	
Safety Joint	2.00			3035.00	
Packer	5.00			3040.00	23.00 Bottom Of Top Packer
Packer	5.00			3045.00	
Perforations	30.00			3075.00	
Recorder	1.00	8419	Inside	3076.00	
Recorder	1.00	4005	Outside	3077.00	
Bullnose	3.00			3080.00	35.00 Bottom Packers & Anchor
Total Tool Length:	58.00				



DRILL STEM TEST REPORT

FLUID SUMMARY

TRANS PACIFIC OIL CORPORATION

CEDERBERG 'A' #1-1

100 S MAIN STE 200 WICHITA KS 67202+3735

1 -11 -14 RUSSELL

Job Ticket: 15696

DST#: 1

ATTN:

Test Start: 2010.12.16 @ 12:47:00

Mud and Cushion Information

Mud Type: Gel Chem

Cushion Type:

Oil API:

deg API

Mud Weight: 9.00 lb/gal

Cushion Length: ft

Water Salinity: ppm

Viscosity: 50.00 sec/qt

Cushion Volume: bbl

Water Loss: 9.60 in³

Gas Cushion Type:

Resistivity: ohm.m

Gas Cushion Pressure: psia

Salinity: 4300.00 ppm

Filter Cake: 1.00 inches

Recovery Information

Recovery Table

Length ft	Description	Volume bbl
40.00	MUD	0.561

Total Length: 40.00 ft Total Volume: 0.561 bbl

Num Fluid Samples: 0

Num Gas Bombs: 0

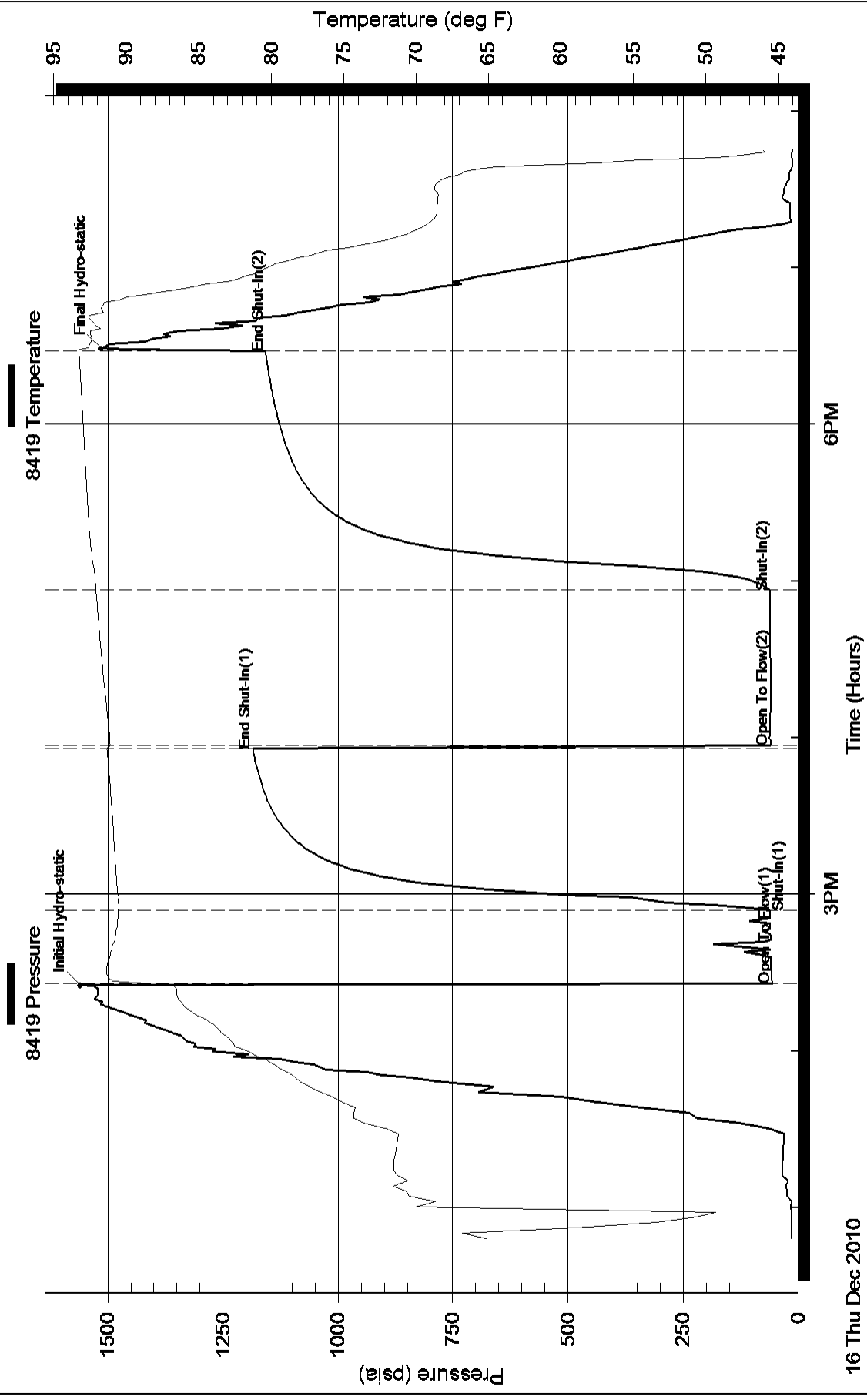
Serial #:

Laboratory Name:

Laboratory Location:

Recovery Comments:

Pressure vs. Time

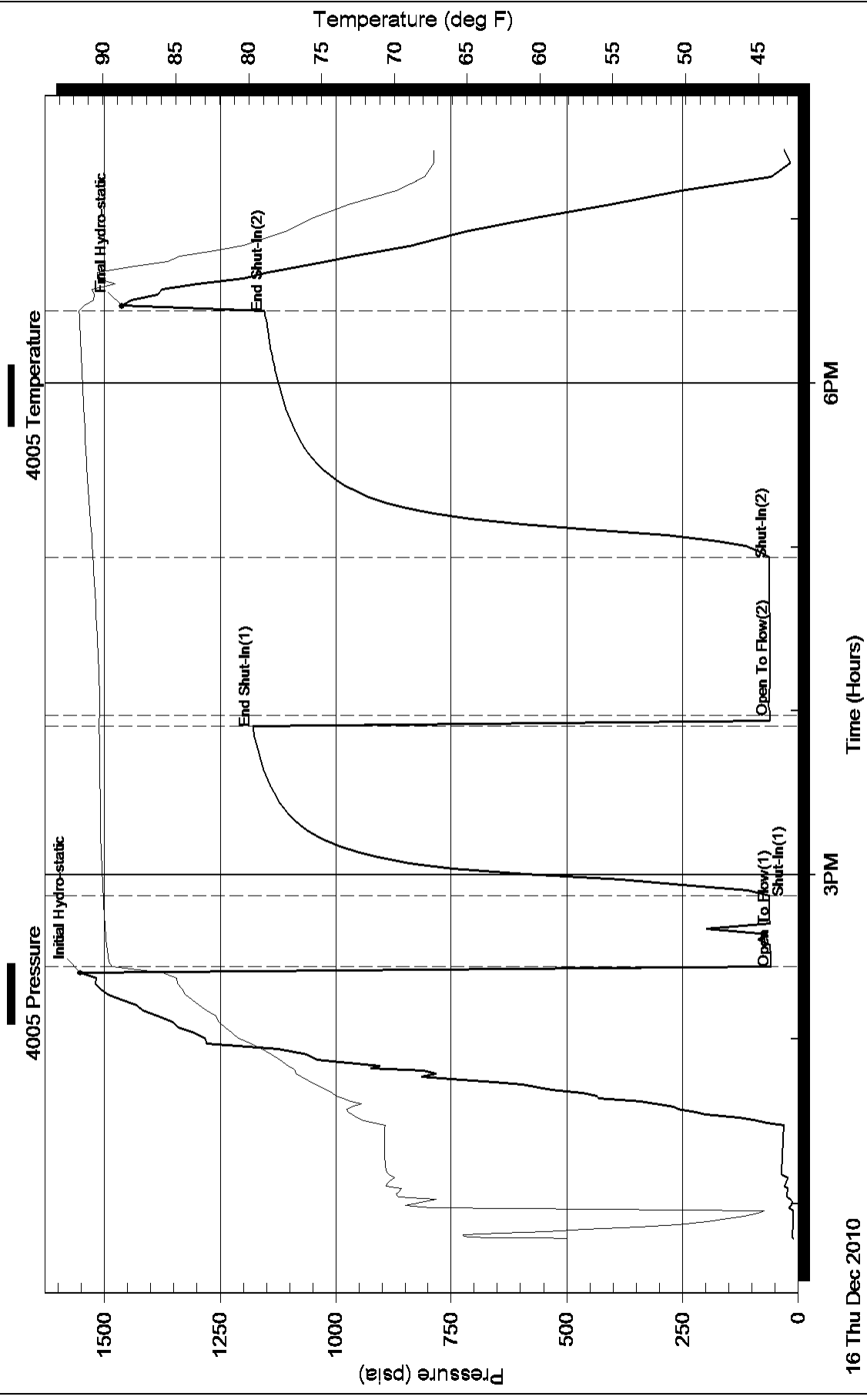


16 Thu Dec 2010

6PM

3PM

Pressure vs. Time



16 Thu Dec 2010

6PM

3PM



DRILL STEM TEST REPORT

Prepared For: **TRANS PACIFIC OIL CORPORATION**

100 S MAIN STE 200 WICHITA KS
67202+3735

ATTN:

1 -11 -14 RUSSELL

CEDERBERG 'A' #1-1

Start Date: 2010.12.17 @ 02:47:00

End Date: 2010.12.17 @ 10:12:30

Job Ticket #: 15697 DST #: 2

Superior Testers Enterprises LLC
PO Box 138 Great Bend KS 67530
1-800-792-6902

Printed: 2010.12.17 @ 10:14:48

TRANS PACIFIC OIL CORPORATION

CEDERBERG 'A' #1-1

1 -11 -14 RUSSELL

DST # 2

LKC 30' ZONE "C"

2010.12.17



DRILL STEM TEST REPORT

TRANS PACIFIC OIL CORPORATION

CEDERBERG 'A' #1-1

100 S MAIN STE 200 WICHITA KS 67202+3735

1 -11 -14 RUSSELL

Job Ticket: 15697

DST#: 2

ATTN:

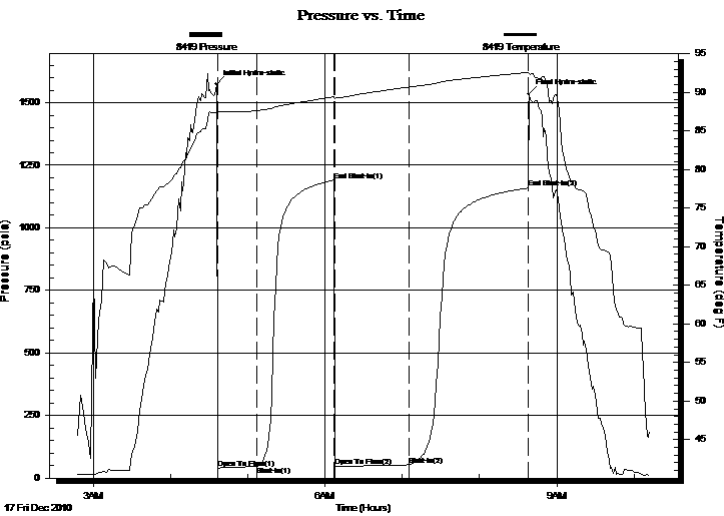
Test Start: 2010.12.17 @ 02:47:00

GENERAL INFORMATION:

Formation: **LKC 30' ZONE "C"**
 Deviated: No Whipstock: ft (KB)
 Time Tool Opened: 04:36:30
 Time Test Ended: 10:12:30
 Interval: **3080.00 ft (KB) To 3110.00 ft (KB) (TVD)**
 Total Depth: 3110.00 ft (KB) (TVD)
 Hole Diameter: 7.88 inches Hole Condition: Fair
 Test Type: Conventional Bottom Hole (Initial)
 Tester: JARED SCHECK
 Unit No: 3320-GB-120
 Reference Elevations: 1789.00 ft (KB)
 1782.00 ft (CF)
 KB to GR/CF: 7.00 ft

Serial #: 8419 Inside
 Press@RunDepth: 53.11 psia @ 3106.00 ft (KB) Capacity: 5000.00 psia
 Start Date: 2010.12.17 End Date: 2010.12.17 Last Calib.: 2010.12.17
 Start Time: 02:47:00 End Time: 10:12:30 Time On Btm: 2010.12.17 @ 04:35:30
 Time Off Btm: 2010.12.17 @ 08:38:30

TEST COMMENT: 30/INITIAL OPEN:WEAK BUT BUILDING BLOW BUILT 1 1/2 INTI WATER IN 30 MINUTES
 60/INITIAL SHUT IN:NO BLOW BACK
 60/FINAL OPEN:VERY WEAK SURFACE BLOW BUILT 1 INCH INTO WATER IN 60 MINUTES
 90/FINAL SHUT IN:NO BLOW BACK



PRESSURE SUMMARY

Time (Min.)	Pressure (psia)	Temp (deg F)	Annotation
0	1574.45	87.36	Initial Hydro-static
1	40.43	87.33	Open To Flow (1)
32	46.15	87.63	Shut-In(1)
91	1190.18	89.42	End Shut-In(1)
92	47.27	89.24	Open To Flow (2)
150	53.11	90.69	Shut-In(2)
243	1159.15	92.58	End Shut-In(2)
243	1535.86	92.39	Final Hydro-static

Recovery

Length (ft)	Description	Volume (bbl)
20.00	MUDDY WATER 30%MUD 70%WATER	0.28
0.00	CHLORIDES 33,000	0.00
0.00	RESISTIVITY .1 @ 77 DEGREES	0.00

Gas Rates

	Choke (inches)	Pressure (psia)	Gas Rate (Mcf/d)



DRILL STEM TEST REPORT

TRANS PACIFIC OIL CORPORATION

CEDERBERG 'A' #1-1

100 S MAIN STE 200 WICHITA KS 67202+3735

1 -11 -14 RUSSELL

Job Ticket: 15697

DST#: 2

ATTN:

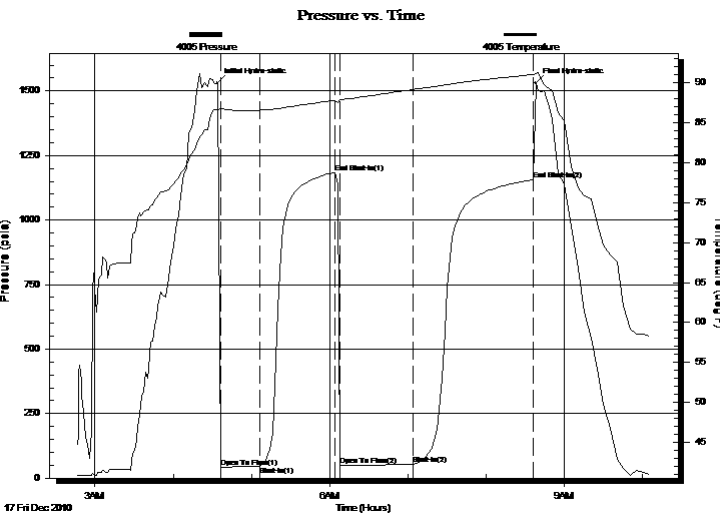
Test Start: 2010.12.17 @ 02:47:00

GENERAL INFORMATION:

Formation: **LKC 30' ZONE "C"**
 Deviated: No Whipstock: ft (KB)
 Time Tool Opened: 04:36:30
 Time Test Ended: 10:12:30
 Interval: **3080.00 ft (KB) To 3110.00 ft (KB) (TVD)**
 Total Depth: 3110.00 ft (KB) (TVD)
 Hole Diameter: 7.88 inches Hole Condition: Fair
 Test Type: Conventional Bottom Hole (Initial)
 Tester: JARED SCHECK
 Unit No: 3320-GB-120
 Reference Elevations: 1789.00 ft (KB)
 1782.00 ft (CF)
 KB to GR/CF: 7.00 ft

Serial #: 4005 Outside
 Press@RunDepth: 1155.66 psia @ 3107.00 ft (KB) Capacity: 5000.00 psia
 Start Date: 2010.12.17 End Date: 2010.12.17 Last Calib.: 2010.12.17
 Start Time: 02:47:00 End Time: 10:05:10 Time On Btm: 2010.12.17 @ 04:34:09
 Time Off Btm: 2010.12.17 @ 08:38:10

TEST COMMENT: 30/INITIAL OPEN:WEAK BUT BUILDING BLOW BUILT 1 1/2 INTI WATER IN 30 MINUTES
 60/INITIAL SHUT IN:NO BLOW BACK
 60/FINAL OPEN:VERY WEAK SURFACE BLOW BUILT 1 INCH INTO WATER IN 60 MINUTES
 90/FINAL SHUT IN:NO BLOW BACK



PRESSURE SUMMARY

Time (Min.)	Pressure (psia)	Temp (deg F)	Annotation
0	1530.50	86.57	Initial Hydro-static
3	41.27	86.73	Open To Flow (1)
33	46.47	86.53	Shut-In(1)
91	1185.01	87.79	End Shut-In(1)
95	48.34	87.86	Open To Flow (2)
151	53.58	89.13	Shut-In(2)
243	1155.66	90.99	End Shut-In(2)
245	1532.12	91.14	Final Hydro-static

Recovery

Length (ft)	Description	Volume (bbl)
20.00	MUDDY WATER 30%MUD 70%WATER	0.28
0.00	CHLORIDES 33,000	0.00
0.00	RESISTIVITY .1 @ 77 DEGREES	0.00

Gas Rates

Choke (inches)	Pressure (psia)	Gas Rate (Mcf/d)



DRILL STEM TEST REPORT

TOOL DIAGRAM

TRANS PACIFIC OIL CORPORATION
 100 S MAIN STE 200 WICHITA KS 67202+3735
 ATTN:

CEDERBERG 'A' #1-1
1 -11 -14 RUSSELL
 Job Ticket: 15697 **DST#: 2**
 Test Start: 2010.12.17 @ 02:47:00

Tool Information

Drill Pipe:	Length: 3087.00 ft	Diameter: 3.80 inches	Volume: 43.30 bbl	Tool Weight: 1000.00 lb
Heavy Wt. Pipe:	Length: 0.00 ft	Diameter: 0.00 inches	Volume: 0.00 bbl	Weight set on Packer: 20000.00 lb
Drill Collar:	Length: 0.00 ft	Diameter: 0.00 inches	Volume: 0.00 bbl	Weight to Pull Loose: 38000.00 lb
			<u>Total Volume: 43.30 bbl</u>	Tool Chased 0.00 ft
Drill Pipe Above KB:	30.00 ft			String Weight: Initial 33000.00 lb
Depth to Top Packer:	3080.00 ft			Final 33000.00 lb
Depth to Bottom Packer:	ft			
Interval between Packers:	30.00 ft			
Tool Length:	53.00 ft			
Number of Packers:	2	Diameter: 6.75 inches		

Tool Comments:

Tool Description	Length (ft)	Serial No.	Position	Depth (ft)	Accum. Lengths
Change Over Sub	1.00			3058.00	
Shut-In Tool	5.00			3063.00	
Hydraulic Tool	5.00			3068.00	
Safety Joint	2.00			3070.00	
Packer	5.00			3075.00	23.00 Bottom Of Top Packer
Packer	5.00			3080.00	
Perforations	25.00			3105.00	
Recorder	1.00	8419	Inside	3106.00	
Recorder	1.00	4005	Outside	3107.00	
Bullnose	3.00			3110.00	30.00 Bottom Packers & Anchor
Total Tool Length:	53.00				



DRILL STEM TEST REPORT

FLUID SUMMARY

TRANS PACIFIC OIL CORPORATION
100 S MAIN STE 200 WICHITA KS 67202+3735
ATTN:

CEDERBERG 'A' #1-1
1 -11 -14 RUSSELL
Job Ticket: 15697 **DST#: 2**
Test Start: 2010.12.17 @ 02:47:00

Mud and Cushion Information

Mud Type: Gel Chem	Cushion Type:	Oil API:	deg API
Mud Weight: 9.00 lb/gal	Cushion Length: ft	Water Salinity:	ppm
Viscosity: 50.00 sec/qt	Cushion Volume: bbl		
Water Loss: 9.60 in ³	Gas Cushion Type:		
Resistivity: ohm.m	Gas Cushion Pressure: psia		
Salinity: 4300.00 ppm			
Filter Cake: 1.00 inches			

Recovery Information

Recovery Table

Length ft	Description	Volume bbl
20.00	MUDDY WATER 30%MUD 70%WATER	0.281
0.00	CHLORIDES 33,000	0.000
0.00	RESISTIVITY .1 @ 77 DEGREES	0.000

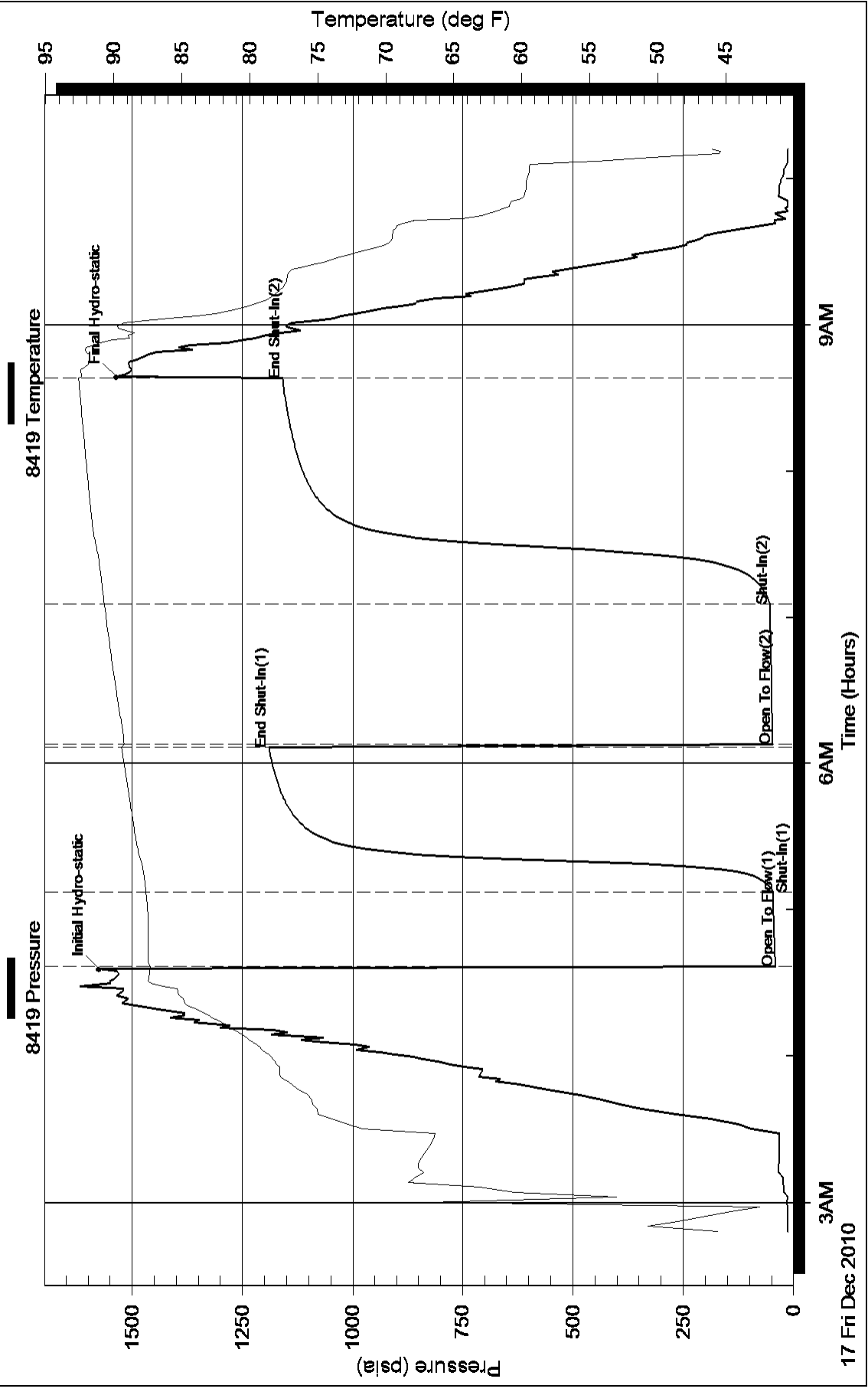
Total Length: 20.00 ft Total Volume: 0.281 bbl

Num Fluid Samples: 0 Num Gas Bombs: 0 Serial #:

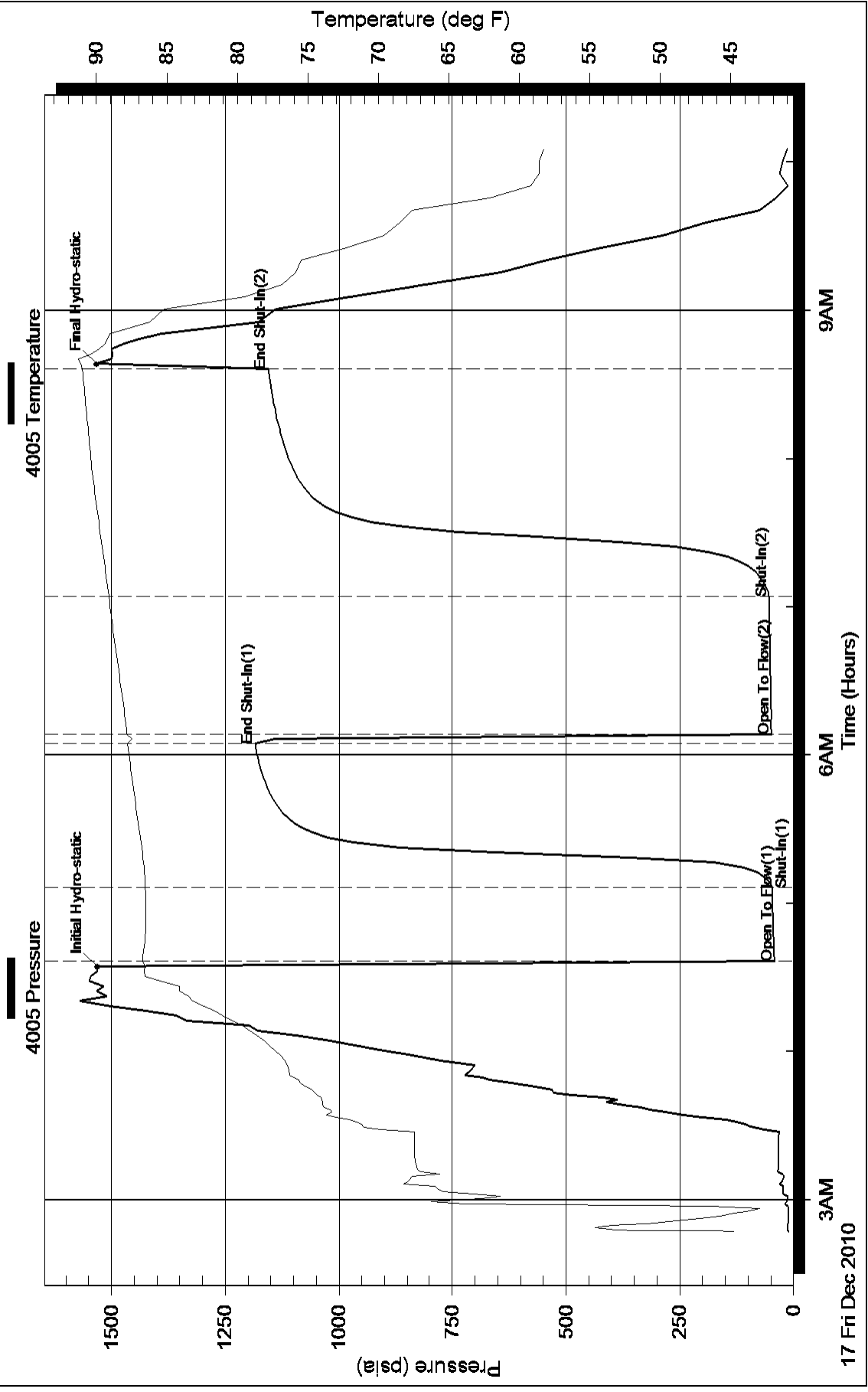
Laboratory Name: Laboratory Location:

Recovery Comments:

Pressure vs. Time



Pressure vs. Time





*Mark Parkinson, Governor
Thomas E. Wright, Chairman
Joseph F. Harkins, Commissioner
Ward Loyd, Commissioner*

December 30, 2010

Glenna Lowe
Trans Pacific Oil Corporation
100 S MAIN STE 200
WICHITA, KS 67202-3735

Re: ACO1
API 15-167-23679-00-00
CEDERBERG 'A' 1-1
NW/4 Sec.01-11S-14W
Russell County, Kansas

Dear Production Department:

We are herewith requesting that the Well Completion Form ACO-1 and attached information for the subject well be held confidential for a period of two years.

Should you have any questions or need additional information regarding subject well, please contact our office.

Respectfully,
Glenna Lowe

ALLIED CEMENTING CO., LLC. 034044

Federal Tax I.D.# 20-5975804

REMIT TO P.O. BOX 31
RUSSELL, KANSAS 67665

SERVICE POINT:

Russell

DATE <u>12-12-10</u>	SEC. <u>1</u>	TWP. <u>11S</u>	RANGE <u>14W</u>	CALLED OUT	ON LOCATION	JOB START <u>1:00 PM</u>	JOB FINISH <u>1:30 PM</u>
LEASE <u>Cederberg SA</u>		WELL # <u>1-1</u>		LOCATION <u>1/2 E IN 1/2 E Sinto</u>		COUNTY <u>Russell</u>	STATE <u>Ks.</u>
OLD OR <input checked="" type="radio"/> NEW (Circle one)							

CONTRACTOR American Eagle Rig #2

TYPE OF JOB Surface Job

HOLE SIZE 12 1/4 T.D. 265

CASING SIZE 8 5/8 DEPTH 264.97

TUBING SIZE _____ DEPTH _____

DRILL PIPE _____ DEPTH _____

TOOL _____ DEPTH _____

PRES. MAX _____ MINIMUM _____

MEAS. LINE _____ SHOE JOINT _____

CEMENT LEFT IN CSG. 15'

PERFS. _____

DISPLACEMENT 15.91 bbl

EQUIPMENT

PUMP TRUCK CEMENTER Shane, Heath

417 HELPER Ken

BULK TRUCK

328 DRIVER Johny Paul

BULK TRUCK

_____ DRIVER _____

REMARKS:

Ran 6 Jts + Landig Jt.

Est Circulation

Mixed 165 sks.

Cement Circulated!

OWNER _____

CEMENT

AMOUNT ORDERED 165 Com 38 CC

28 Gal

COMMON <u>165</u>	@ <u>13.50</u>	<u>2227.50</u>
POZMIX _____	@ _____	_____
GEL <u>3</u>	@ <u>20.25</u>	<u>60.75</u>
CHLORIDE <u>6</u>	@ <u>51.50</u>	<u>309.00</u>
ASC _____	@ _____	_____
_____	@ _____	_____
_____	@ _____	_____
_____	@ _____	_____
_____	@ _____	_____
_____	@ _____	_____
_____	@ _____	_____
HANDLING <u>165</u>	@ <u>2.25</u>	<u>371.25</u>
MILEAGE <u>110 sks/mile</u>		<u>313.50</u>
TOTAL		<u>3,282.00</u>

CHARGE TO: Trans Pacific

STREET _____

CITY _____ STATE _____ ZIP _____

RECEIVED

DEC 30 2010

TOTAL 1124.00

Thanks!

To Allied Cementing Co., LLC.

You are hereby requested to rent cementing equipment and furnish cementer and helper(s) to assist owner or contractor to do work as is listed. The above work was done to satisfaction and supervision of owner agent or contractor. I have read and understand the "GENERAL TERMS AND CONDITIONS" listed on the reverse side.

PRINTED NAME _____

SIGNATURE Brendon Baker

SERVICE

DEPTH OF JOB _____

PUMP TRUCK CHARGE _____ 991.00

EXTRA FOOTAGE @ _____

MILEAGE 19 @ 7.00 133.00

MANIFOLD @ _____

@ _____

@ _____

PLUG & FLOAT EQUIPMENT

_____ @ _____

_____ @ _____

_____ @ _____

_____ @ _____

_____ @ _____

TOTAL _____

SALES TAX (If Any) _____

TOTAL CHARGES 1124.00

DISCOUNT 0.00 IF PAID IN 30 DAYS

ALLIED CEMENTING CO., LLC. 034052

Federal Tax I.D.# 20-5975804

REMIT TO P.O. BOX 31
RUSSELL, KANSAS 67665

SERVICE POINT:

Russell

DATE <u>12-18-10</u>	SEC. <u>1</u>	TWP. <u>11</u>	RANGE <u>14</u>	CALLED OUT	ON LOCATION	JOB START COUNTY <u>Russell</u>	JOB FINISH STATE <u>Ks</u>
LEASE <u>Ceder</u>	WELL # <u>14</u>	LOCATION <u>Russell #281 N 10 W 14 18</u>				COUNTY <u>Russell</u>	STATE <u>Ks</u>
OLD OR NEW <input checked="" type="radio"/> NEW (Circle one)		<u>1/2 E 1 N 1 E 18 S 2 L 4</u>					

CONTRACTOR American Eagle #3 OWNER _____

TYPE OF JOB PTA

HOLE SIZE 2 3/8 T.D. 3676

CASING SIZE _____ DEPTH _____

TUBING SIZE _____ DEPTH _____

DRILL PIPE 4 1/2 DEPTH 920

TOOL _____ DEPTH _____

PRES. MAX _____ MINIMUM _____

MEAS. LINE _____ SHOE JOINT _____

CEMENT LEFT IN CSG. _____

PERFS. _____

DISPLACEMENT _____

EQUIPMENT

PUMP TRUCK CEMENTER Shane, Hank

912 HELPER Kevin

BULK TRUCK DRIVER Gary

_____ DRIVER _____

BULK TRUCK DRIVER _____

_____ DRIVER _____

REMARKS:

920' 25 skt

576' 100 skt

376' 40 skt

40' 15 skt

Rot Hole 30 skt

CHARGE TO: Trans Pacific

STREET _____

CITY _____ STATE _____ ZIP _____

Markes!

To Allied Cementing Co., LLC.

You are hereby requested to rent cementing equipment and furnish cementer and helper(s) to assist owner or contractor to do work as is listed. The above work was done to satisfaction and supervision of owner agent or contractor. I have read and understand the "GENERAL TERMS AND CONDITIONS" listed on the reverse side.

PRINTED NAME _____

SIGNATURE Bradford Fisher

CEMENT

AMOUNT ORDERED 2205 6/8 48 Gal

1/4 4/8

COMMON 125 @ 13.50 1660.50

POZMIX 82 @ 7.55 619.10

GEL 7 @ 20.25 141.75

CHLORIDE @ _____

ASC @ _____

@ _____

@ _____

@ _____

@ _____

@ _____

@ _____

@ _____

@ _____

HANDLING 205 @ 2.25 461.25

MILEAGE 110/56/16 @ _____ 389.50

TOTAL 3222.10

SERVICE

DEPTH OF JOB _____

PUMP TRUCK CHARGE _____ 991.00

EXTRA FOOTAGE @ _____

MILEAGE 19 @ 7.00 133.00

MANIFOLD @ _____

@ _____

@ _____

TOTAL 1124.00

PLUG & FLOAT EQUIPMENT

@ _____

@ _____

@ _____ 40.00

@ _____

@ _____

TOTAL 40.00

SALES TAX (If Any) _____

TOTAL CHARGES _____

DISCOUNT _____ IF PAID IN 30 DAYS