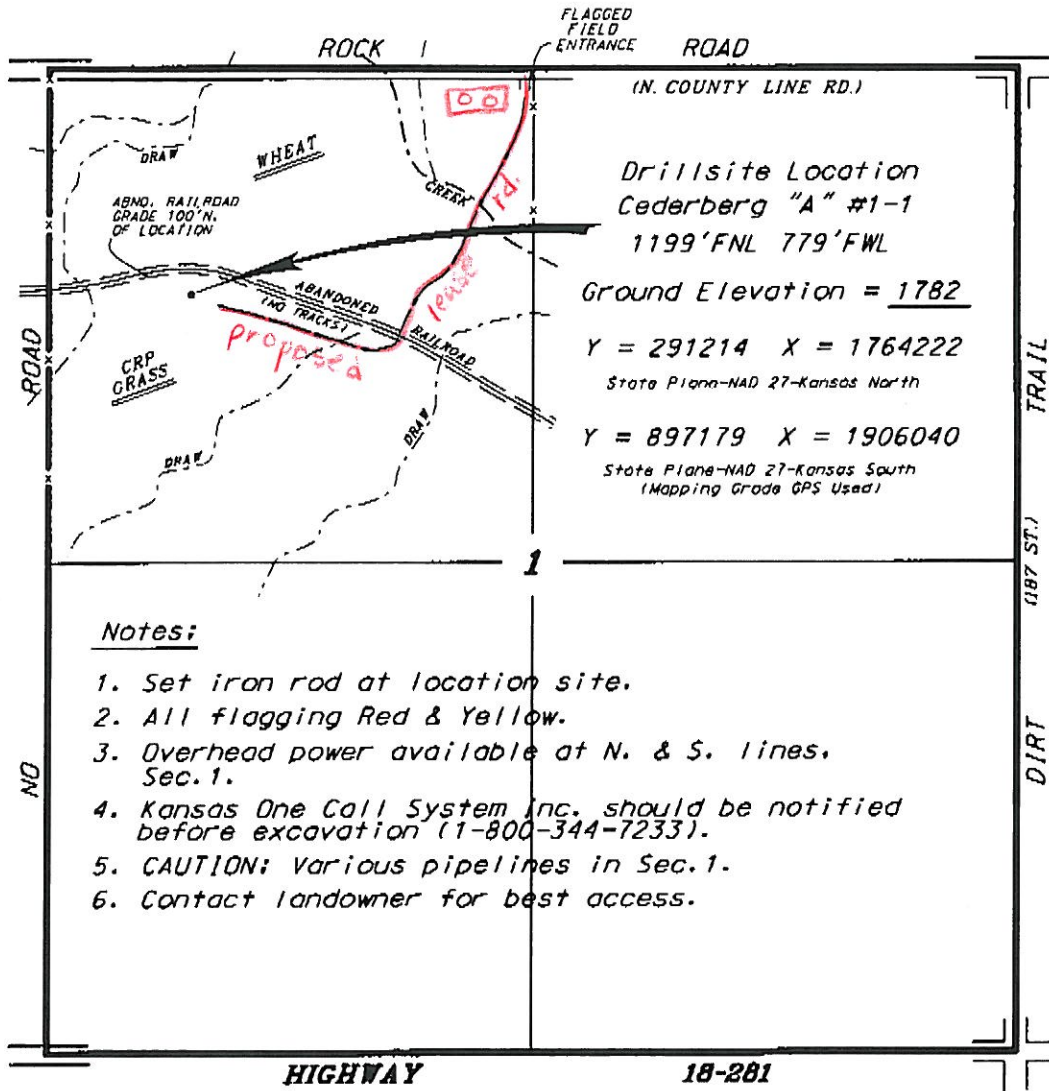


TRANS PACIFIC OIL CORPORATION
 CEDERBERG LEASE
 NW.1/4. SECTION 1, T11S, R14W
 RUSSELL COUNTY, KANSAS



*Ingress and egress to location as shown on this plat is for usage only and may not be legally opened for public use. Contact landowner, tenant and county road department for access.

