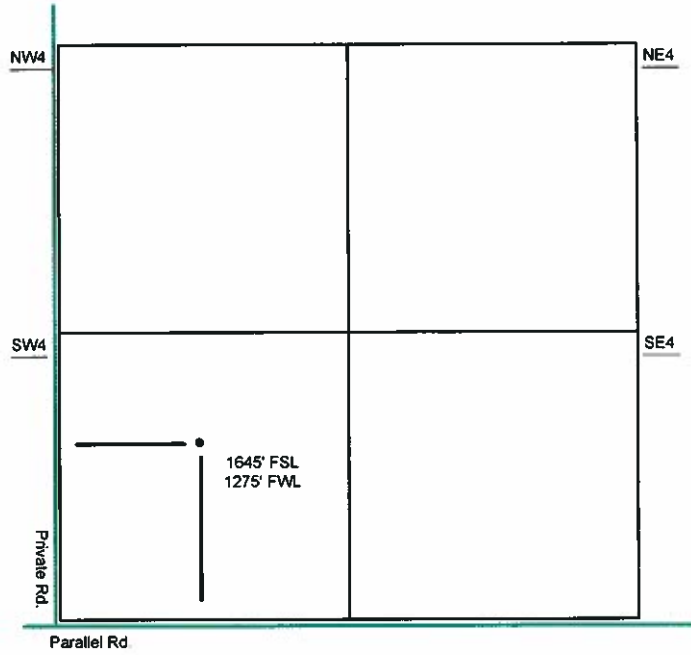
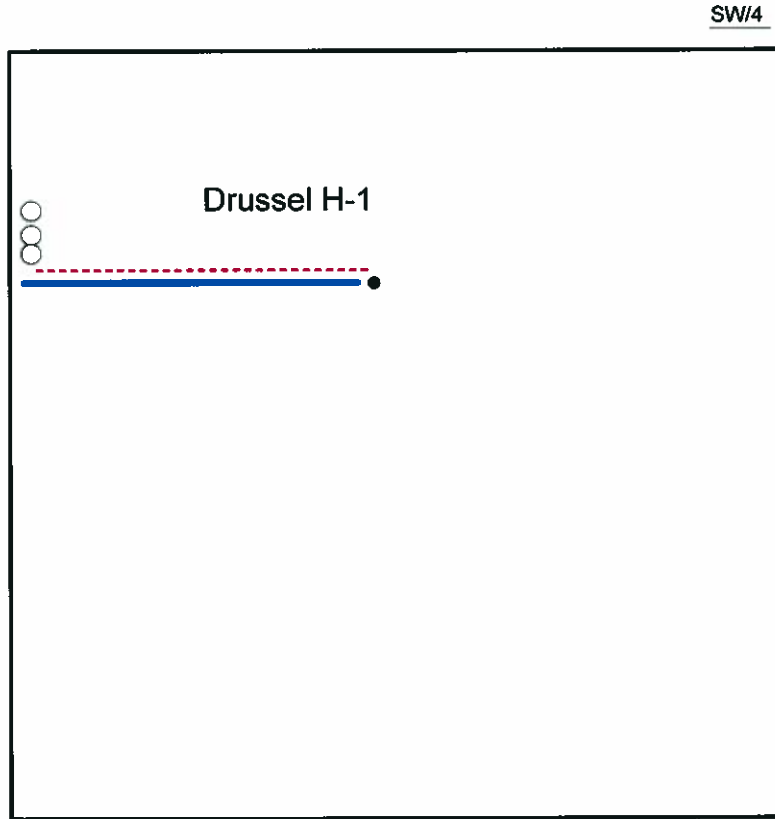


Proposed Plan of Construction  
 Drussel H-1  
 Sec 35-T25S-R33W  
 Finney County, KS



Sec 35 - T25S - R33W

The PROPOSED Tank Battery for the Drussel H-1 will be located in the NW of the SW quarter.



- Well Location
- Lease Roads
- - - Proposed Pipeline
- Tank Battery Equipment
- Power Lines
- - - Existing Pipeline

Detail of  
 SW4 Sec 35-T25S-R33W

Note-Drawing **Not** to Scale

