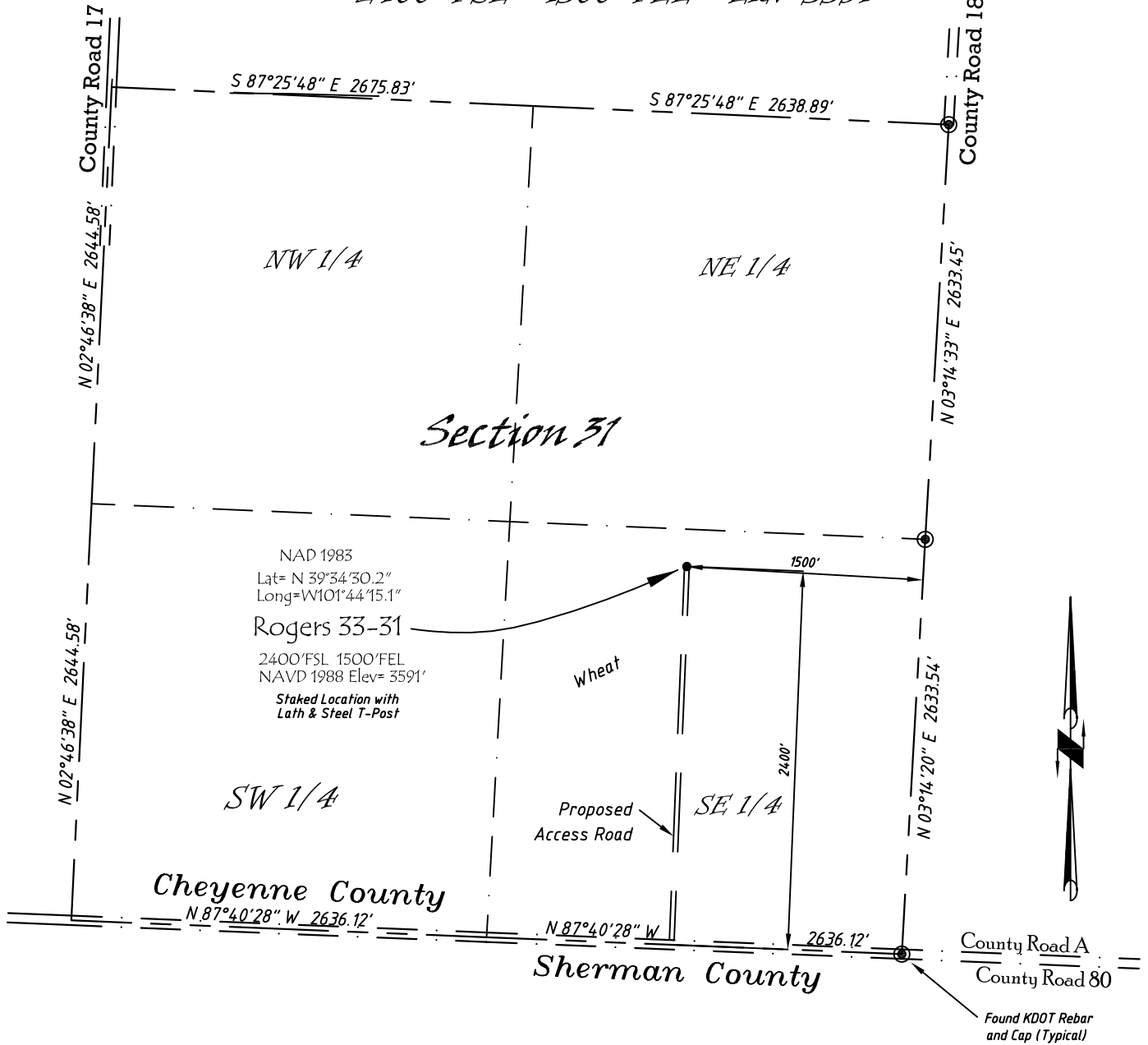


Well Location Map

# Rogers 33-31

NW 1/4, SE 1/4, Section 31, T5S, R39W, 6th P.M. Cheyenne County, Kansas  
 2400' FSL - 1500' FEL Elev=3591'



Copyright © 2010

Directions:

From the Intersection of Hwy 27 & Hwy 36 @ Wheeler, KS, Go S on Hwy 27  
 Approximately 13 miles, to County Road A, then go W 1.45 miles, then N  
 2400' to Staked location.

*This Drawing is for Construction Purposes Only*

Noble Energy, Inc.		
<b>DRAWN</b> GP	<b>DATE</b> 11/27/10	Section 31
<b>FB</b> B73 P75	<b>EQ</b> HijPro	T5S, R39W, 6th P.M. Cheyenne County, KS
<b>SCALE</b> 1"=1000'	<b>SHEET</b> 1 of 1	<b>PROJECT NO.</b> 1570.125

North  
Winds  
Surveys, Inc.

402 Walnut  
Kanorado, KS  
785 / 399 / 2551