

LITHOLOGY STRIP LOG

WellSight Systems

Scale 1:240 (5"=100') Imperial
Measured Depth Log

Well Name: Stapleton #3-10
Location: 2338' FSL & 363' FEL, Sec. 10-T30S-R32W, Haskell Co., KS.
License Number: 15-081-21919-0000 Region: Diaden
Spud Date: 9/13/2010 Drilling Completed: 9/24/10
Surface Coordinates: 2338' FSL & 363' FEL, Sec. 10-T30S-R32W

Bottom Hole Coordinates: Same as above

Ground Elevation (ft): 2885' K.B. Elevation (ft): 2898'
Logged Interval (ft): 4000' To: 5650' Total Depth (ft): 5650'
Formation: St. Louis at TD.
Type of Drilling Fluid: Freshwater/Gel to 3451'; Chemical Gel 3451' to TD.

Printed by WellSight Log Viewer from WellSight Systems 1-800-447-1534 www.WellSight.com

OPERATOR

Company: Strata Exploration, Inc.
Address: P.O. Box 401
Fairfield, IL. 62837-0401

GEOLOGIST

Name: Jon D. Christensen
Company: Consulting Petroleum Geologist
Address: 9002 W. Sliver Hollow St.
Wichita, KS. 67205-8856

Cores

None Taken

DSTs

DST #1(Kansas City 'A') 4662' - 4681' Times 15"-45"-45"-90" IFP Strong blow BOB/Immed, FFP Strong Blow GTS/2" Vol. TSTM(Burns OK), 3" Blowback on SI's; REC: 134' GOCM(5%G, 10%O, 10%W, 75%M), 267' OCWM(5%O, 70%W, 25%M), 124' MW w/oil scum(95%W, 5%M), CI 80,000 Mud 1,900; IFP 45-86#, ISIP 1273#, FFP 78-167#, FSIP 1274#, IHP 2262#, FHP 2095#, BHT 126 Deg. F.

Comments

9/13/10 MIRU Sterling Drilling Co. Rig #5, Spud at 4:15 PM.; 9/14/10 Drilling at 1064'; 9/15/10 TD. 1807' - WOC; 9/16/10 Drilling at 2413'; 9/17/10 Drilling at 3148'; 9/18/10 Drilling at 3755'; 9/19/10 Drilling at 4297'; 9/20/10 TD. 4681' - Short trip for DST #1; 9/21/10 Drilling at 4770'; 9/22/10 Drilling at 5064'; 9/23/10 Drilling at 5352'; 9/24/10 Drilling at 5540' - reached Total Depth of 5650 at 6:30 PM; 9/25/10 RTD. 5650' - TIH to LDDP to run 5 1/2" Production casing.

Set 8 5/8" (23#) Surface Casing at 1800' w/590 sx.(Basic Energy Services). Cement did Circulate. Cement fell 2 - fill to bottom of cellar with pea gravel. PD. 5:45 AM. 9/15/10. WOC 8 Hours.

Surveys: 3/4 Deg. at 1807'(Surface Casing); 2 Deg. at 4681'(DST #1); 3/4 Deg. at 5650' RTD.

After review of the Halliburton logs, DST data, structural position and positive hydrocarbon shows in multiple zones, the operator elected to set new 5 1/2" (15.5#) Production casing for completion.

LOG TOPS:

ROCK TYPES

	Anhy
	Bent
	Brec
	Cht
	Clyst

	Coal
	Congl
	Dol
	Gyp
	Igne

	Lmst
	Meta
	Mrlst
	Salt
	Shale

	Shcol
	Shgy
	Sltst
	Ss
	Till

ACCESSORIES

MINERAL

	Anhy
	Arggrn
	Arg
	Bent
	Bit
	Brecfrag
	Calc
	Carb
	Chtdk
	Chtlt
	Dol
	Feldspar
	Ferrpel
	Ferr
	Glau
	Gyp
	Hvymn
	Kaol
	Marl

	Minxl
	Nodule
	Phos
	Pyr
	Salt
	Sandy
	Silt
	Sil
	Sulphur
	Tuff

FOSSIL

	Algae
	Amph
	Belm
	Bioclst
	Brach
	Bryozoa
	Cephal
	Coral

	Crin
	Echin
	Fish
	Foram
	Fossil
	Gastro
	Oolite
	Ostra
	Pelec
	Pellet
	Pisolite
	Plant
	Strom

STRINGER

	Anhy
	Arg
	Bent
	Coal
	Dol

	Gyp
	Ls
	Mrst
	Sltstrg
	Ssstrg

TEXTURE

	Boundst
	Chalky
	Cryxln
	Earthy
	Finexln
	Grainst
	Lithogr
	Microxln
	Mudst
	Packst
	Wackest

OTHER SYMBOLS

POROSITY

	Earthy
	Fenest
	Fracture
	Inter
	Moldic
	Organic
	Pinpoint
	Vuggy

SORTING

	Well
	Moderate
	Poor

ROUNDING

	Rounded
	Subrnd
	Subang

Angular

	Angular
--	---------

OIL SHOW

	Even
	Spotted
	Ques
	Dead

INTERVAL

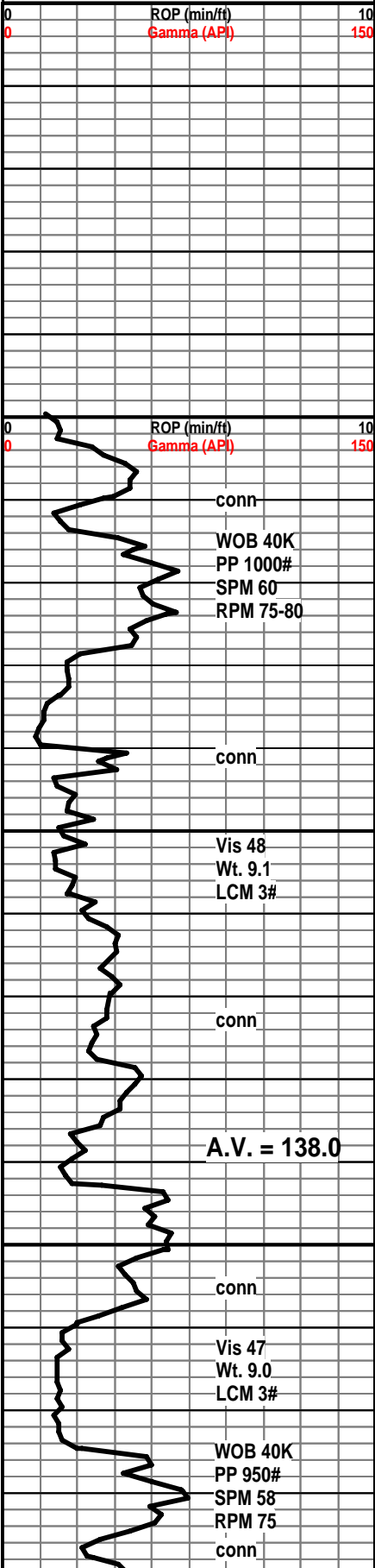
	Core
	Dst

EVENT

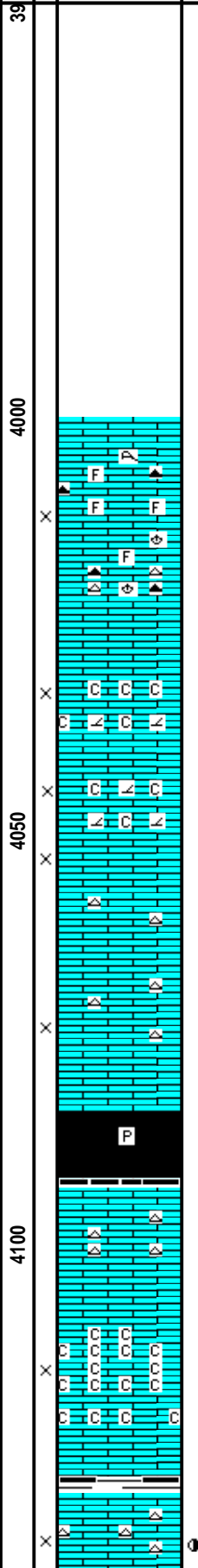
	Rft
	Sidewall

Curve Track 1

ROP (min/ft) ———
 Gamma (API) - - - -



Depth
 Porosity Type
 Lithology
 Oil Shows



Geological Descriptions

STRATA EXPLORATION, INC.

STAPLETON #3-10

GEOLOGICAL REPORT

KB. 2898'

10' Wet and Dry Samples start at 4000'

LM; off wh, lt gy, tan, foss, scat fair interpart por, lt to occ med yel min fluor only, no stn or odor, interbdd med gy cht, ns.

LM; tan to lt brn, cream, most dense, well cem foss mat, scat lt to med gy cht, no vis por, tite

LM; lt to med brn, occ off wh, tan, fxln to sucrosic text partly dolomitic, occ chalky mtx, dull yel min fluor, poor to fair interxln por, no stn or odor, ns.

LM; lt gy brn, fxln, poor vis interxln por, scat hd tite micrite, rare lt gy to off wh cht, dull yel min fluor, no stn or odor, interbdd cse opaque sparry calc xtals, ns.

SH; dk brn to blk, carb ip, trc pyr, gassy ip

LM; off wh, tan, lt brn, most dense, blocky, hd, scat lt gy to off wh cht, tite, ns.

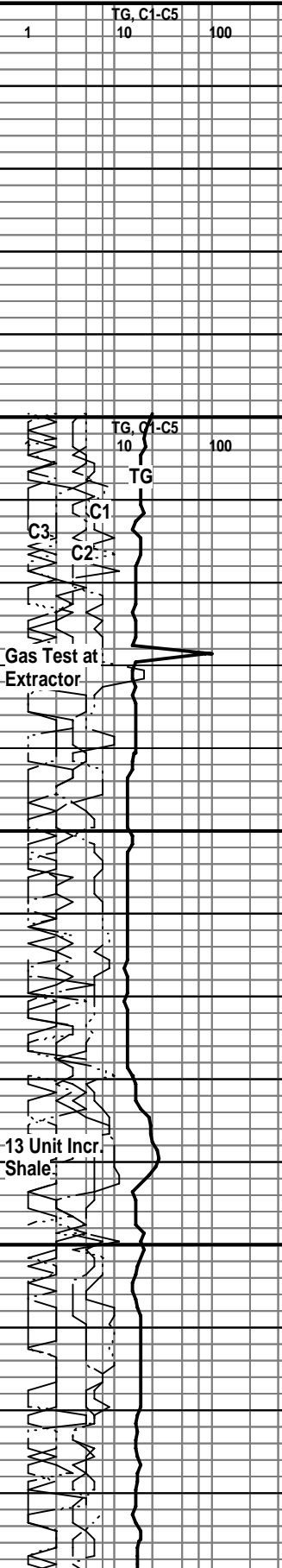
LM; wh, off wh, lt gy, foss to fxln, v. chalky w/some pure soft chalk, dull to lt yel min fluor, no stn or odor, ns.

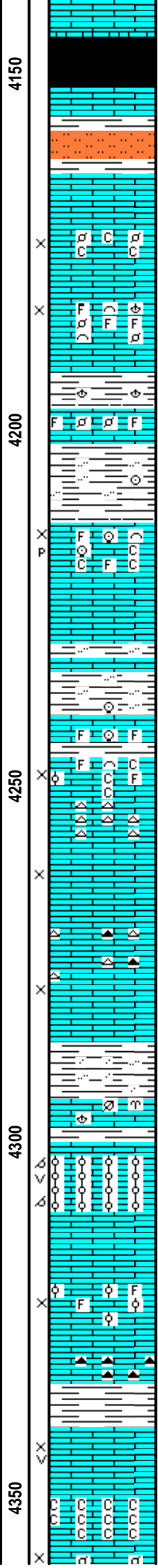
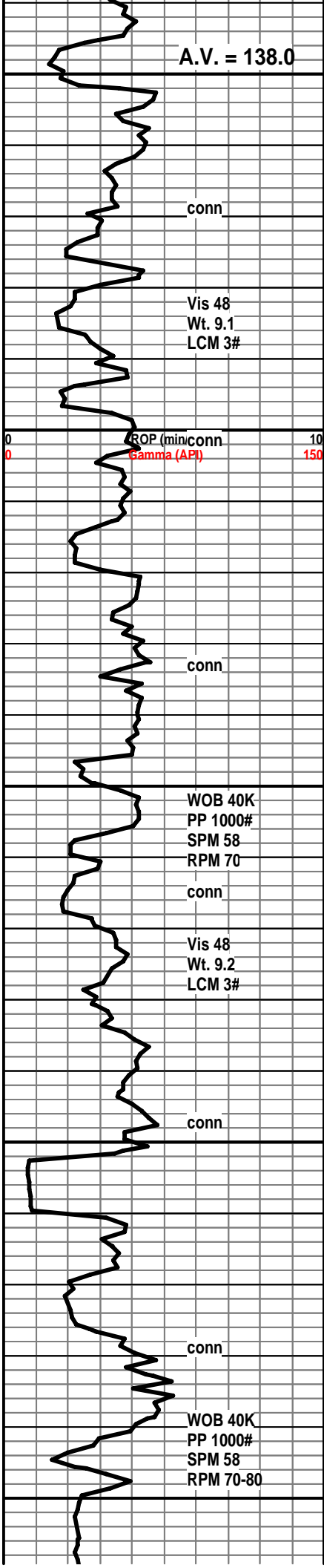
SH; dk gy, trc blk, platy

LM; tan to lt brn, f to med xln, scat cse spar calc xtals, cherty ip, poor vis interxln por, trc. lt brn spotted oil stn, faint odor, med yel fluor, no F.O., no gas kick

TG, C1-C5

TG (Units) ———
 C1 (units) - - - -
 C2 (units) ·····
 C3 (units) ·····
 C4 (units) ·····
 C5 (units) ·····





HEEBNER SHALE 4145(-1247)

SH; dk brn - blk, carb, platy, trc gas bubble

LM; med to dk brn, foss ip, hd

SH; lt gy grn, silty w/interbdd stst.

TORONTO 4164(-1266)

LM; tan to buff, fxln to finely pelletal, fair interxln/interpart por, minor chalky mtx, v. dull to no fluor, no stn or odor, ns.

LM; tan to lt brn, foss to med xln, abnt foss frags, fair interpart por, no fluor, no stn or odor, ns.

SH; dk gy, foss ip, platy

LM; lt gy, off wh, v. foss, well cem, tit

SH; lt gy to grn, fiss, occ silty

LM; tan to lt brn, buff, foss w/fair interpart and occ p-p por, chalky mtx at top, dull yel fluor, no stn, no gas kick, ns.

SH; dk gy to gy brn, silty, some sticky

LM; lt to med brn, hd, blocky, occ foss, tit

LANSING 'A' 4246(-1348)

LM; off wh, cream, buff, foss to med xln - some gran text, fair interpart/interxln por, no fluor, no stn or odor, chalky mtx ip, interbdd wh cht, ns.

LM; tan to cream, lt brn, fxln to occ sucrosic text, fair to gd interxln w/some well dev. vug por, dull yel min fluor only, no stn, no gas kick, ns.

LM; tan to lt brn, fxln to sucrosic text, poor to fair interxln por, cherty w/gy to amber fresh cht, patchy dull yel fluor, no stn or odor, ns.

SH; med gy, silty to sandy, firm

LM; med to dk gy, foss, hd

LANSING 'B' 4300(-1402)

LM; tan to lt brn, oolitic, med size molds, gd oomoldic and vug por, some rextalized, scat cse spar calc xtals, med yel min fluor, no stn or odor, no gas kick, ns.

LM; tan to lt brn, interbdd med to dk brn, fxln, foss ip, rare well cem oolites, poor vis interpart/interxln por, dull yel fluor, no stn, ns.

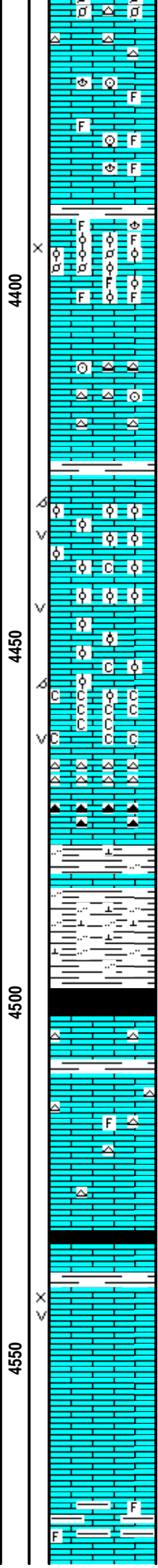
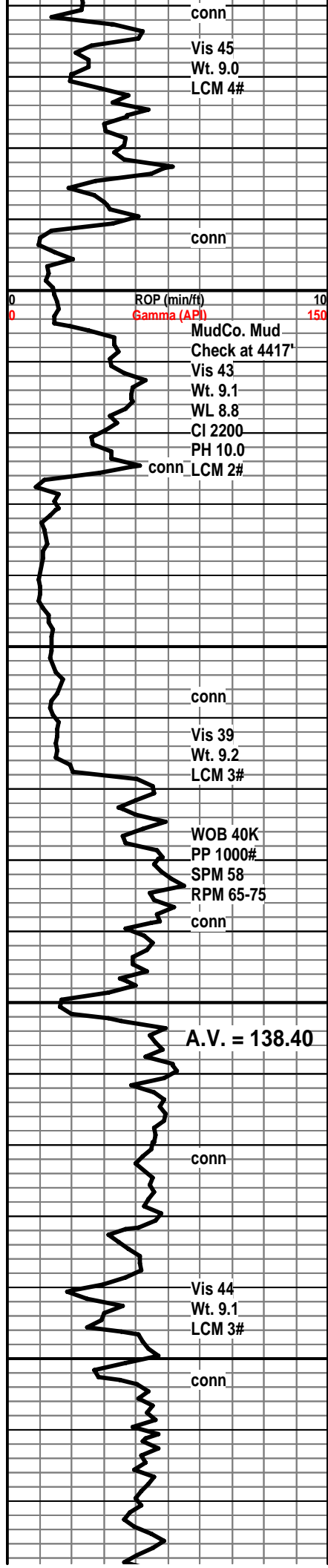
LM; dk brn, hd, micritic, smoky to dk gy cht, tit

SH; med gy, firm, platy

LM; tan to buff, f to med xln, some sucrosic text, fair to gd interxln por, scat vug por, no stn or odor, ns.

LM; wh, off wh, v. soft - chalky, much pure chalk, interbdd fxln to finely pelletal lmst, fair to gd interpart por, dull yel min fluor, rarely cherty, no stn or odor, ns.





LM; It brn, tan, most dense, micritic, blocky, scat foss mat, dull yel min fluor, occ foss cht, ns.

LM; tan to buff, rarely med brn, highly foss - oolitic ip, some finely pelletal, most w/gd interpart por, lt yel fluor, no stn or odor, no gas kick, ns.

LM; lt gy, gy brn, hd, most dense - micritic, cherty ip, tite, rare foss(crin), ns.

LANSING 'F' 4426(-1528)
LM; tan to lt brn, off wh, oolitic, well dev. oomoldic por, occ vug por, brittle ip, med yel min fluor, rarely chalky, no stn or odor, ns.

LM; lt brn, tan, wh, oolitic, some sucrosic text lmst interbdd, chalky ip, ns.

LM; wh, off wh, foss-oolitic ip, most pure wh chalk, soft, dull yel min fluor only, some thinly bdd wh cht at base of zone, ns.

LM; med to dk brn, hd, blocky, micritic, dk gy to smoky cht interbdd, tite

SH; dk gy, firm, calc, interbdd hd brn lmst strng, occ silty

SH; blk, carb, soft, sev. gas bubbles

LM; med to med gy brn, hd, blocky, occ gy cht

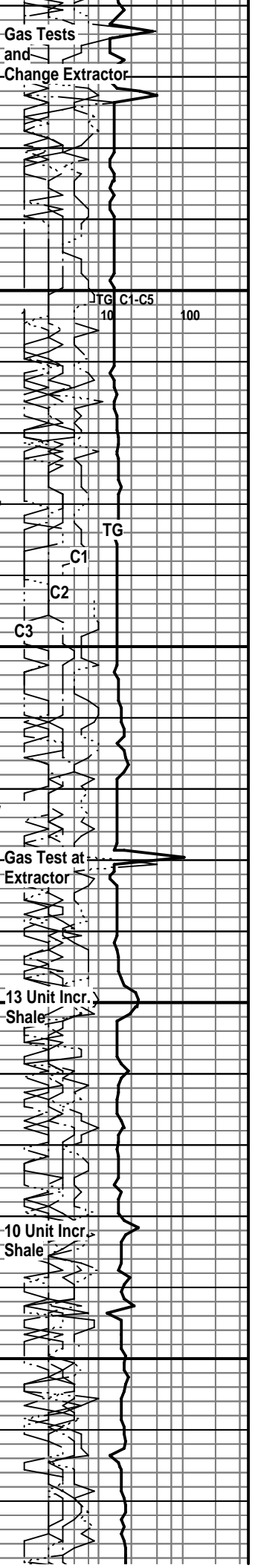
LM; off wh, lt gy, buff, fxln, most dense, micritic, interbdd lt gy cht, no vis por, rare spotted dull yel min fluor, ns.

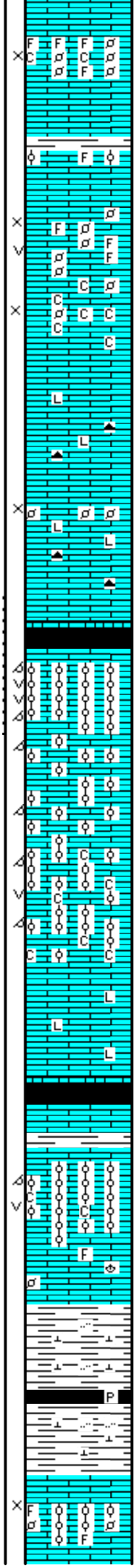
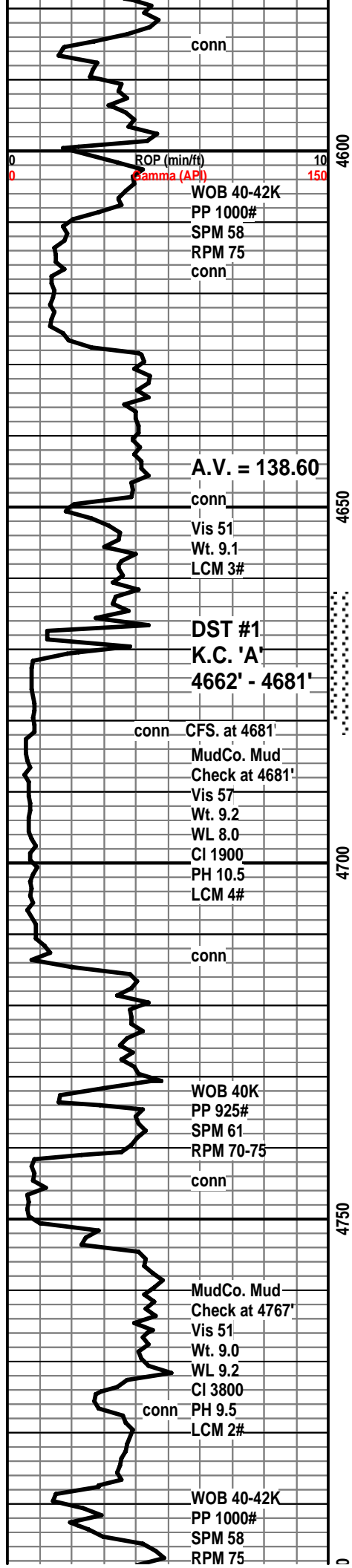
SH; blk, carb ip, thinly bdd, soft, trc gas bubble

LM; tan to cream, fxln, scat fair interxln por, minor small vug por also, dull yel to no fluor, no stn or odor, ns.

LM; tan to lt brn, hd, blocky, some lithographic, occ cse spar calc xtals, no vis por, ns.

LM; med gy, gritty, argil ip, firm, foss ip.





LM; tan to off wh, foss to finely pelletal, fair interpart por, minor chalky mtx, dull yel min fluor only, no stn or odor, ns.

LM; tan to lt brn, finely pelletal to med xln, fair to gd interxln and occ vug por, scat lt brn oil stn, few gas bubbles, no odor, fair cut, show at top of zone, bcm barren porosity in bottom of zone

LM; tan to off wh, buff, foss/oolitic ip, much soft chalky mtx, fair to gd interpart and occ vug por, med yel min fluor only, no stn or odor, ns.

LM; med to dk brn, hd, some lithographic, interbdd finely oolitic lmst w/dull yel fluor, no vis stn or odor, no vis gas bubbles, no sample shows

SH; blk, carb ip, trc gas bubbles

KANSAS CITY 'A' 4670(-1772)
LM; lt brn, oolitic, most med size molds, well dev. oomoldic and vug por, lt golden yel fluor, gd odor, few gas bubbles, SFO, most w/even lt-med brn stn, gd cut, some w/barren porosity, occ rextalized w/cse spar calc

LM; lt brn, rare tan, oolitic, gd oomoldic por, rare vug por, med golden yel fluor, trc spotted med brn stn, fair odor, most barren por, bcm chalky ip, no gas kick

LM; tan to buff, lt brn, med to lrg size moldic por, vug por, dull golden yel fluor, minor chalky mtx, v. faint to no odor, ns.

LM; lt to med brn, blocky, most micritic, hd

SH; blk, carb, gassy ip.

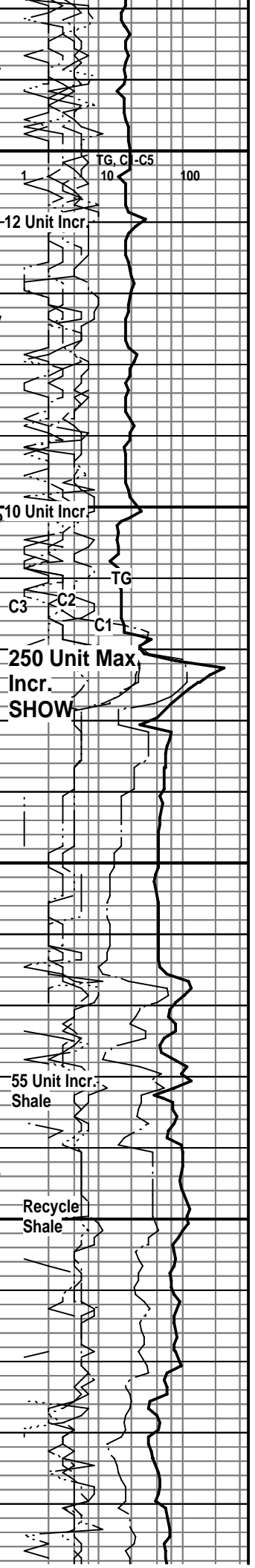
KANSAS CITY 'B' 4740(-1842)
LM; lt brn, oolitic, most med size molds, fairly well dev oomoldic por, rare vugs por, brittle ip, minor chalky mtx, med yel fluor, no vis stn, no odor, ns.

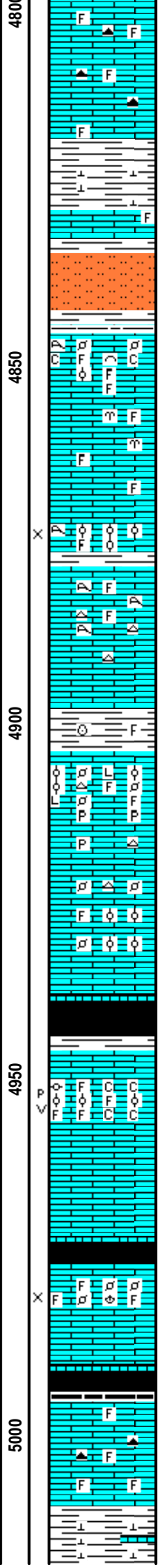
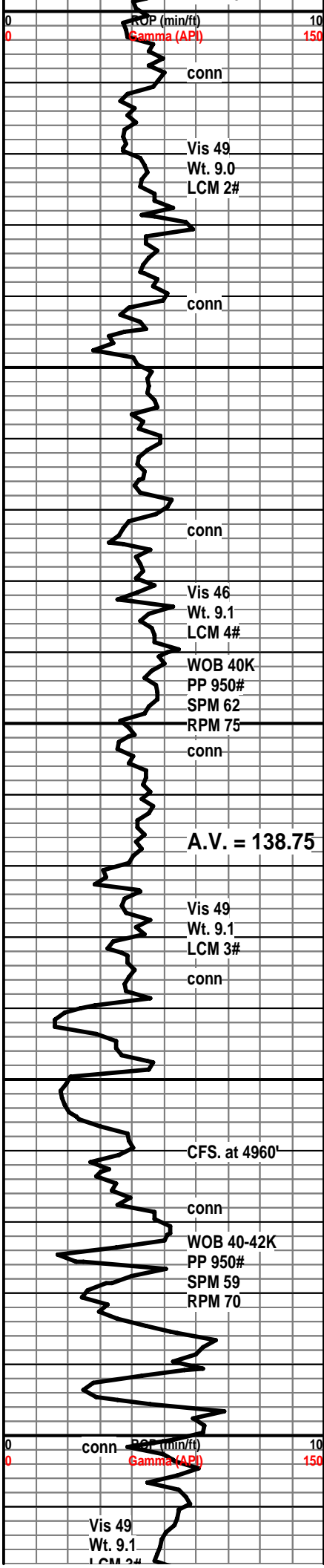
LM; lt to med brn, fxln w/scat foss, interbdd dense micrite, tite

SH; med to dk gy, firm, calc, occ silty

SH; dk gy to blk, firm, platy, trc pyr

KANSAS CITY 'C' 4786(-1888)
LM; tan to buff, lt brn, oolitic, abnt med size ooids and foss mat, most well cem, poor to fair interpart por, dull yel fluor, no stn or odor, no gas kick, ns.





LM; med brn, foss ip, most dense, micritic, occ gy fos to oolitic cht, no vis por, hd, tite

SH; grn, gy grn, brn, firm, calc

LM; med brn, hd, blocky, interbdd hd lmy sh

SH & SLTST; lt gy to grn, firm, platy

MARMATON 4845(-1947)

LM; wh to off wh, med xln w/scat cse foss frags, occ pelletal lms, minor chalky mtx, lt yel fluor, fair interxln w/vug por, no stn, ns.

LM; tan to cream, lt brn, foss to finely oolitic, scat foss mat, poor vis interpart por - most well cem, lt yel min fluor only, no stn or odor, ns.

LM; tan to lt brn, buff, fxln to foss, most well cem, scat corals, rare lt to med gy occ foss cht, no fluor, no stn or odor, ns.

SH; med to dk gy, firm, occ fos:

LM; med to dk brn, foss - pelletal/oolitic, med to lrg pellets, most well cem, other foss mat, lt golden yel min fluor, no stn or odor, no gas kick

LM; tan to lt brn, finely pelletal, abnt mostly well cem ooids and foss hash, poor interpart por, no stn or odor, ns.

SH; blk, carb ip, blocky, gassy ip.

PAWNEE 4946(-2048)

LM; tan to lt brn, foss to gran text, leached type p-p and occ lrg vug por, gas bubbles, lt blue/wh fluor, lt chl oil droplets, spotted v. lt brn oil stn, v. faint odor, poor to fair cut, chalky ip.

LM; tan to lt brn, foss ip, most well cem, interbdd lt gy cht, dull yel to no fluor, no vis stn, no odor, ns.

SH; blk, blocky ip, trc gas

FORT SCOTT 4976(-2078)

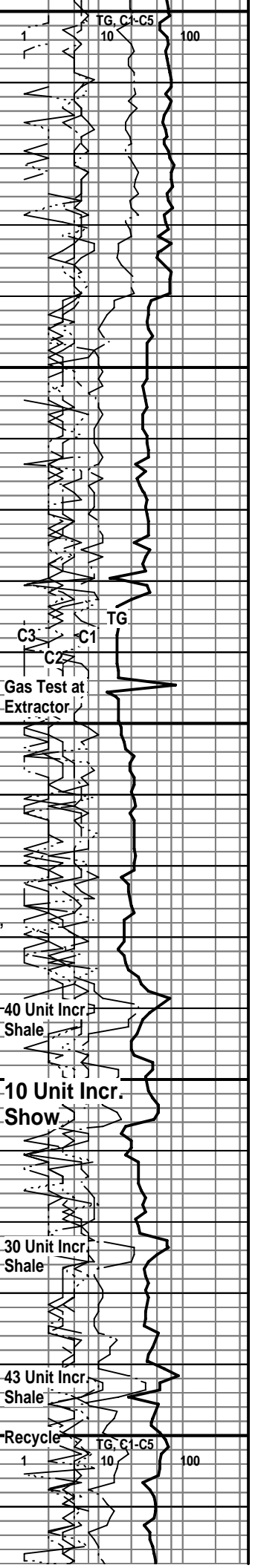
LM; off wh, tan, pelletal/foss, fair interpart por in some dull yel fluor, trc gas bubbles, no vis oil stn, no odor, poor shows, no cut, no gas kick

CHEROKEE SHALE 4991(-2093)

SH; blk, carb ip, soft to blocky, gassy ip.

LM; tan to off wh, rare lt brn, most dense, occ well cem foss mat, no fluor, no stn or odor, occ dk gy to smoky cht, ns.

SH; dk gy, firm, occ silty, calc to lmy



LCM 3#

A.V. = 139.25

conn

MudCo. Mud
Check at 5061'
Vis 51
Wt. 9.1
WL 8.0
Cl 3200
PH 11.0
LCM 3#

conn

WOB 42-43K
PP 975#
SPM 59
RPM 70

conn

A.V. = 139.25

conn

Vis 56
Wt. 9.2
LCM 3#

conn

Vis 49
Wt. 9.2
LCM 3#

conn

ROP (min)
Gamma (API)

conn

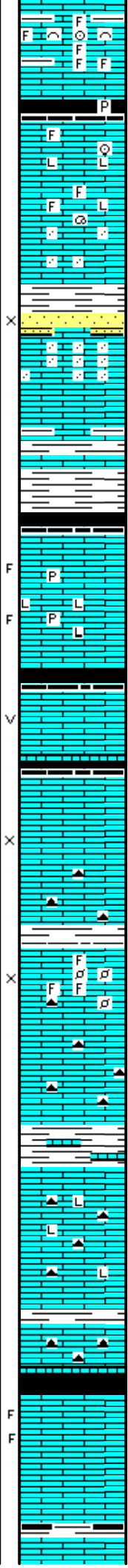
WOB 42K
PP 975#
SPM 59
RPM 75

5050

5100

5150

5200



LM; med to dk brn, dk gy brn, argil ip, interbdd highly foss well cem med brn lmst, no vis por, no stn or odor ns.

SH; blk, fiss to platy, trc pyr

LM; tan to lt brn, buff, most dense, lithographic ip, sca well cem foss mat, lt golden yel min fluor, no stn or odor, no vis por, ns

LM; lt brn, tan, sandy to gritty text, hd, no vis por, no stn or odor, trc gy cht, ns.

SS; lt gy brn, v. lmy w/interbdd sandy lmst, poor to fair intergran por, no flour, no stn, ns

LM; tan to lt brn, sandy to gritty text, v. hd, blocky, siliceous ip, no fluor, no stn, ns.

SH; dk gy, calc, hd, lmy w/interbdd shaly lmst

ATOKA 5093(-2195)

LM; lt to med brn, most micritic, some lithographic, v. hd, occ fracs - pyr on frac edges, cse calc xtals also, no fluor, no stn or odor, interbdd med to cse xln dense lmst, ns.

SH; blk, brittle, blocky ip, trc gas

LM; med brn, cse xln w/foss mat, fair vis vug por, spotted med to dk brn stn, faint odor, med yel fluor, fa to gd cut, no vis gas bubbles

SH; blk, fiss, blocky

LM; off wh, lt brn, fxln to sandy text, fair interxln por, scat spotted med brn oil stn, faint odor, no F.O., poss. gas bubbles, weak cut

LM; tan to lt brn, most micritic, blocky, dense, no fluor rare dk gy occ foss cht, ns.

LM; tan to lt brn, gy brn, foss, finely pelletal ip, poor to fair interpart por, dull yel fluor, quest. gas bubbles, trc dk blk oil stn, no odor, weak to no show, no gas kick

LM; med brn, v. hd, micritic to lithographic, tite, scat gy to smoky cht

SH; med to dk gy, occ blk, firm, lmy ip.

LM; med to dk gy, gy brn, hd, blocky, occ smoky cht, lithographic ip, dense

LM; dk gy, dk gy brn, dense, interbdd med gy shales, no vis por, no fluor, ns.

ATOKA SHALE MARKER 5211(-2313)

LM; med to dk brn, cherty ip, some cse xln lmst w/pos fracs, fair/gd oil odor, med yel spotted fluor, dk brn spotted oil stn, no vis gas bubbles

LM; lt to med brn, med xln ip, most dense, blocky, hd, interbdd dk gy to blk shales

25 Unit Incr. Shale

15 Unit Incr. Shale

16 Unit Incr. Shale

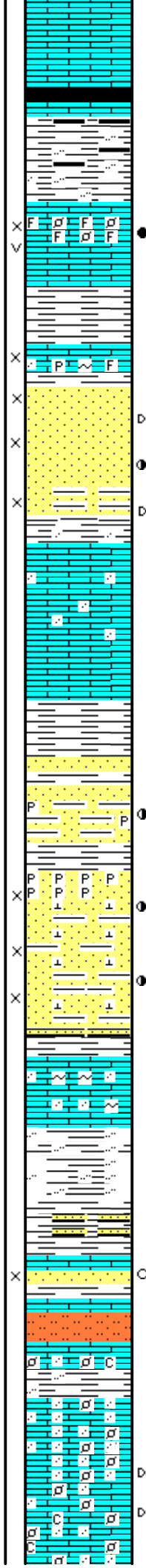
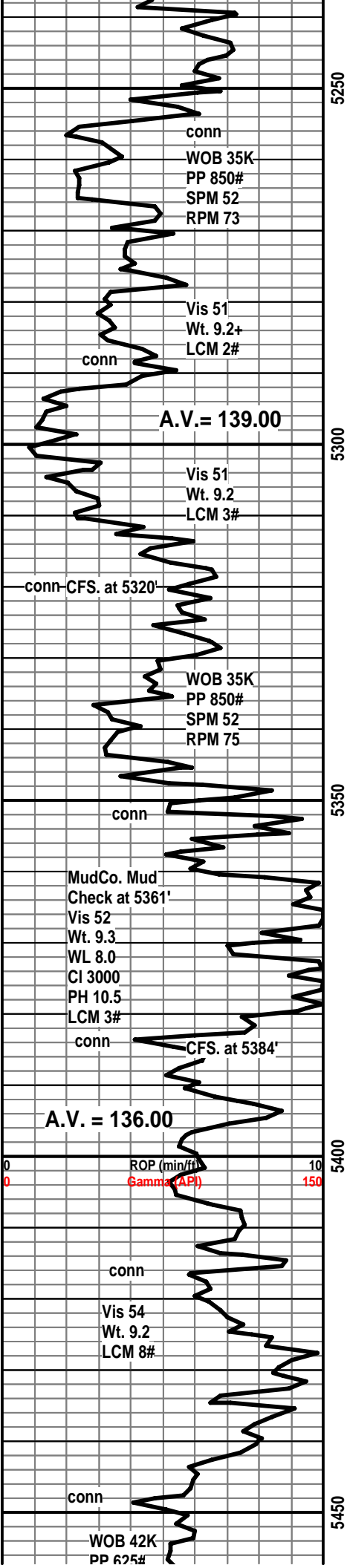
8 Unit Incr. Poss Show

18 Unit Incr. SHOW

TG, C1-05
1 10 100

21 Unit Incr. Poss. Show

TG



REDUCE WT. ON BIT TO 35,000#, P.P. 850#(52 SPM), RPM 70 AT 5240'

MORROW SHALE 5250(-2352)

SH; med gy, some mouse gy, soft, occ silty, interbdd carb strngs.

LM; off wh, lt brn, foss - finely pelletal, some fair interpart and vug por, med brn even oil stn, most w/ brite yel fluor, faint odor, gd cut, trc gas bubbles

LM; off wh, tan, lt brn, cse xln, occ pyr, foss ip, med yel fluor, some glau, no gas kick, faint odor

UPPER MORROW SAND 5292(-2394)

SS; clr, wh, most f gr qtz, clusters, most w/gd intergran por, dull yel fluor, trc gas bubbles, some blk dead tar, oil flakes, sl. show of live oil stn, v. faint odor, fair cut

SS; clr, brn, gy, argil ip, some hd siliceous ss, scat blk tarry dead oil, no odor, weak cut, inter bdd hd lmy ss and sandy lmst

LM; tan to off wh, some lt brn, med xln to sandy ip, most dense, blocky, lt yel fluor in some, no vis staining, no odor, ns.

SH; pale grn, gy grn, med mousy gy, some sticky - fiss

SS; lt gy to lt brn, most f gr qtz ss, shaly ip, rare dissem pyr, lt. oil stn, no odor, no gas kick

LOWER MORROW SAND 5360(-2462)

SS; clr, tan, lt golden brn, rare lt gy, fine to med gr qtz, clusters, fri, gd intergran por, clean, some dissem. pyr at top, faint gassy odor, med to occ brite yel fluor, subang to subrnd gr, fair milky cut, no F.O., scat lt brn oil stn, calc cmt, occ carb/shaly strngs

CFS. at 5384': SS; lt golden brn, most f gr qtz, cluster: fair to gd intergran por, few gas bubbles, faint gassy odor, scat lt oil stn, med to occ brite yel fluor, fair milk cut, no F.O.

LM; off wh, pale grn, hd, partly sandy, glau ip, no fluor no stn or odor, tite

SH; varic: rust red, grn, tan, v. silty ip, interbdd gy flakey shales, some gy vf gr qtz ss strngs

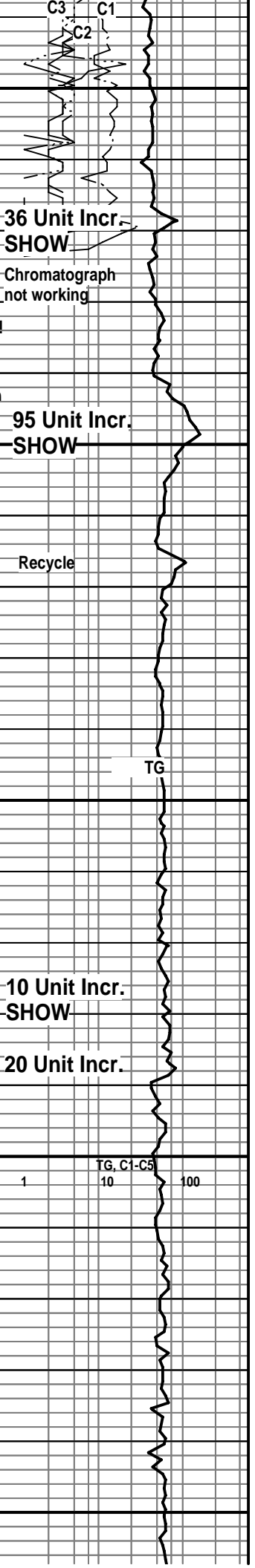
SS; clr, lt tan, med to cse gr qtz, subrnd to ang gr, some argil, dull yel fluor, poss oil stn, fri ip, clusters, poor to fair intergran por

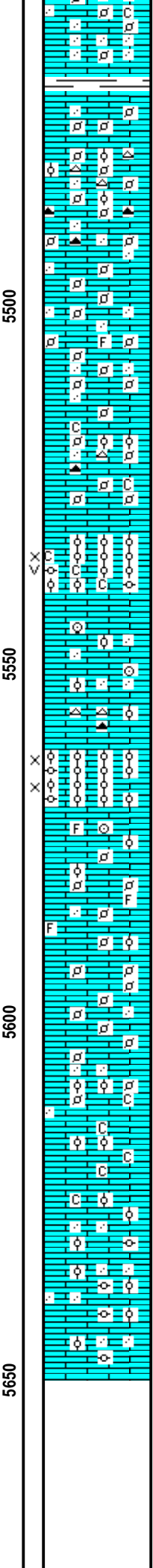
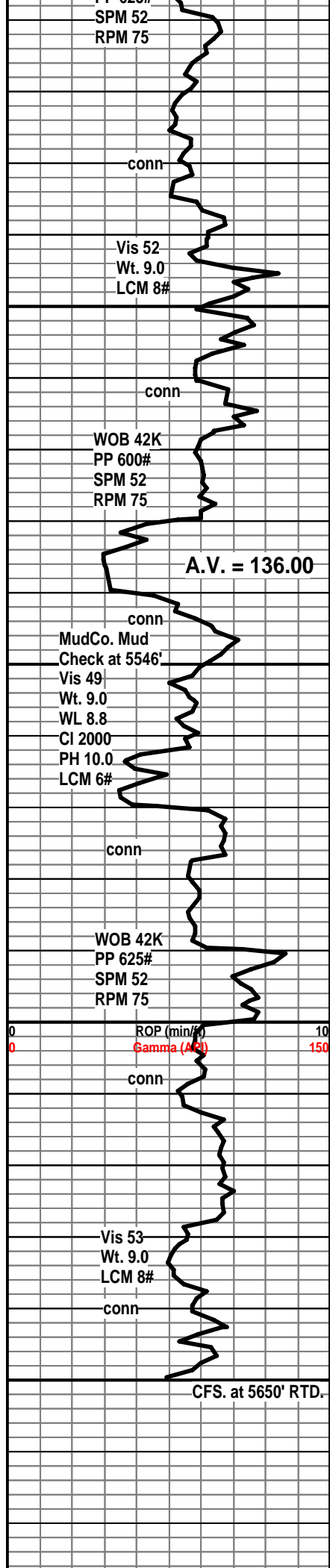
LM; lt gy, tan, sandy, weathered appearance, with rust red to red brn sltst, firm, interbdd lt brn/pink sandy lmst - chalky ip.

ST. GENEVIEVE 5434(-2536)

Incr. WOB to 42,000#, SPM 52 at 5442'

LM; off wh, wh, sandy, hd, abnt f to vf gr qtz in dense lmst mtx, scat fine foss pellets, no vis por, rare blk dead tar/gilsonite, no odor, no live shows





LM; wh, off wh, finely pelletal, sandy ip, well cem, minor chalky mtx, no vis por, no stn or odor, ns.

LM; tan to off wh, finely pelletal, decrease in sand content, hd, well cem, interbdd org oolitic cht, no vis por, ns.

LM; off wh, tan, finely pelletal, occ sandy, hd, no vis por, trc org oolitic cht, no fluor, ns/

LM; tan to off wh, finely pelletal, dense, rarely sandy, interbdd finely oolitic lmst - well cem, no vis por, scat chalky mtx, trc org cht, no fluor, no stn or odor, ns.

ST. LOUIS 'A' 5530(-2632)
 LM; wh, off wh, oolitic, med size coated ooids, weakly cem, fair interpart por, trc vug por, much dk brn to blk stn, SSFO, fair odor, med to brite yel fluor, gas bubbles, fair cut, occ chalky mtx

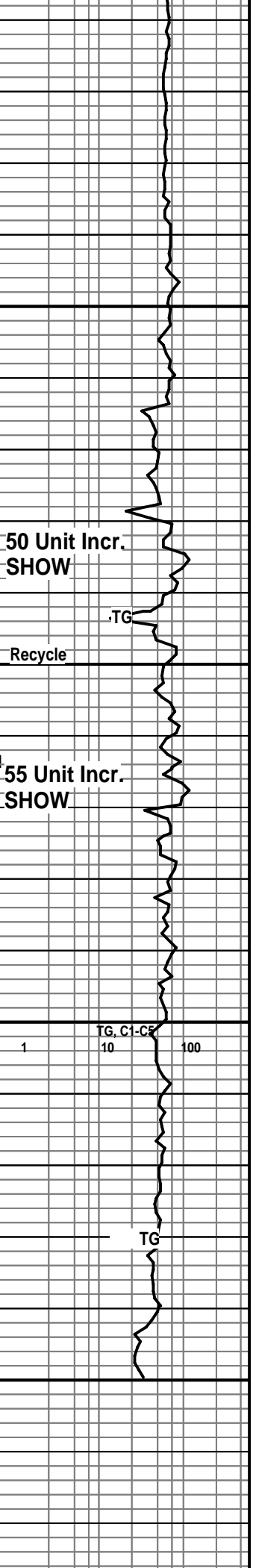
LM; tan to lt brn, buff, most dense, scat well cem foss mat, sl sandy ip, hd, no vis por, scat off wh to pale org cht, ns.

ST. LOUIS 'B' 5562(-2664)
 LM; tan to lt brn, off wh, med to lrg. coated to uncoated ooids, loosely cem - fair interpart por, gd odor, fair show of gassy FO, med brn to blk spotted to even oil stn, minor chalky mtx, some loose ooids in tray, occ dead blk tar/gilsonite

LM; tan to lt brn, med xln to dense, micritic ip, scat well cem ooids and foss mat, no vis por, interbdd finely pelletal off wh lmst, rarely sandy, no stn or odor, ns.

LM; off wh, tan, buff, finely oolitic to pelletal, occ chalky mtx, well cem, no fluor, no stn or odor, ns.

LM; tan to lt brn, hd, abnt well cem foss pellets and fragments, occ cse clr rnd qtz gr in dense mtx, rare gy to org/gy cht, no vis por, no stn or odor, ns.



RTD. 5650' at 6:30 PM. 9/24/10

LTD. 5650' on 9/25/10

Halliburton DIL, NEU/DEN w/ PE,

