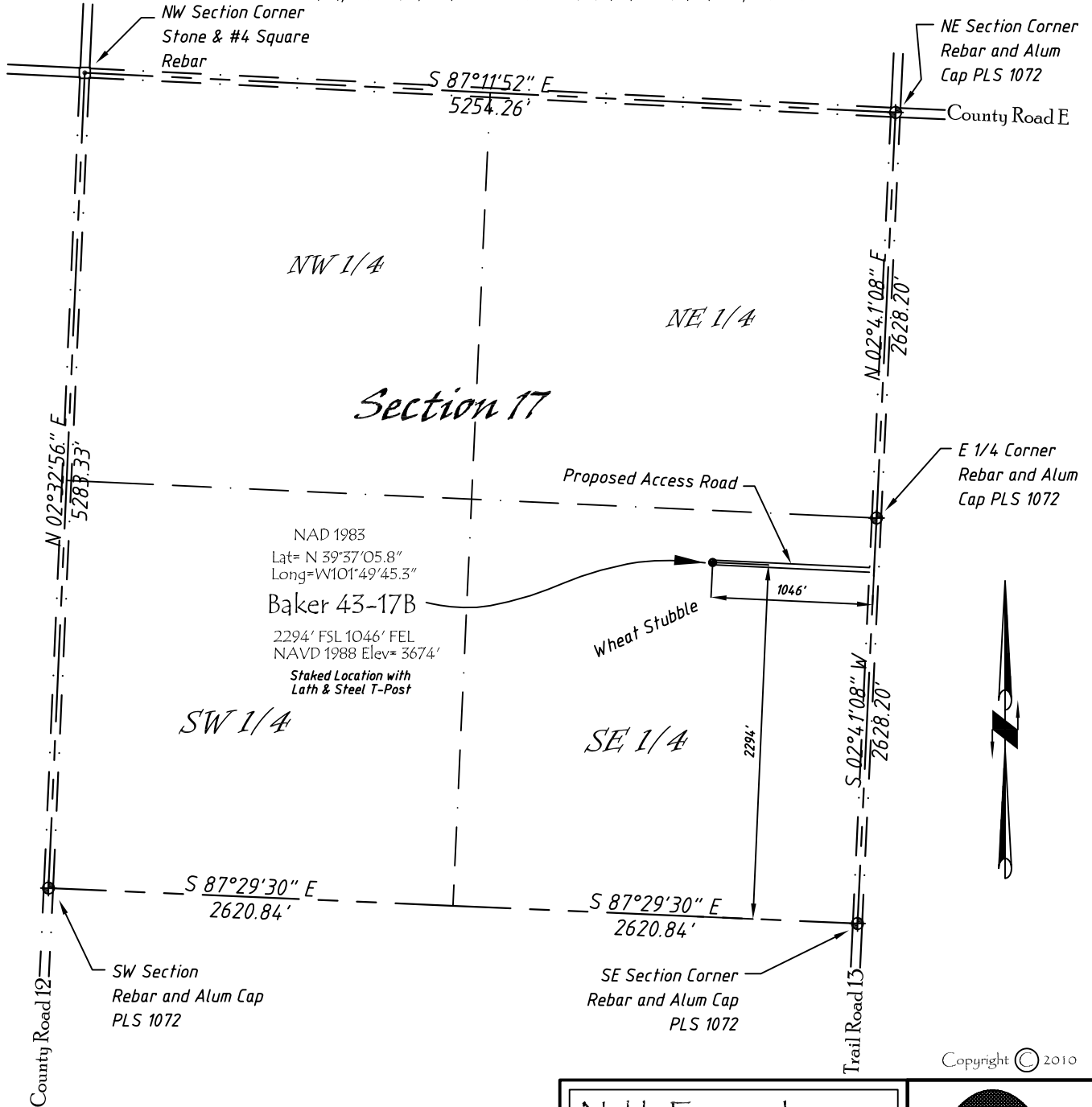


Well Location Map

Baker 43-17B

NE 1/4, SE 1/4, Section 17, T5S, R40W, 6th P.M. Cheyenne County, Kansas
 2294' FSL - 1046' FEL Elev=3674'



Copyright © 2010

Directions:

From the Intersection of County Road 14 (River Street) & Hwy 36 @
 St. Francis, KS Go S on River St. turns into County Rd 14 Approximately
 10 miles to County Road E, Then West 1 mile to Trail Road 13, Then
 S 0.6 Miles, Then W 1046' +/- to Staked location

This Drawing is for Construction Purposes Only

Noble Energy, Inc.		
DRAWN GP	DATE 12/19/10	Section 17 T5S, R40W, 6th P.M. Cheyenne County, KS
FB B7+P17	EQ HjPro	
SCALE 1"=1000'	SHEET 1 of 1	PROJECT NO. 1570.152

