



DRILL STEM TEST REPORT

Prepared For: **TRANS PACIFIC OIL CORPORATION**

100 S MAIN STE 200 WICHITA KS
67202+3735

ATTN:

1 -11 -14 RUSSELL

CEDERBERG 'A' #1-1

Start Date: 2010.12.16 @ 12:47:00

End Date: 2010.12.16 @ 19:45:00

Job Ticket #: 15696 DST #: 1

Superior Testers Enterprises LLC
PO Box 138 Great Bend KS 67530
1-800-792-6902

Printed: 2010.12.16 @ 18:56:02



DRILL STEM TEST REPORT

TRANS PACIFIC OIL CORPORATION
 100 S MAIN STE 200 WICHITA KS 67202+3735
 ATTN:

CEDERBERG 'A' #1-1
1 -11 -14 RUSSELL
 Job Ticket: 15696 **DST#: 1**
 Test Start: 2010.12.16 @ 12:47:00

GENERAL INFORMATION:

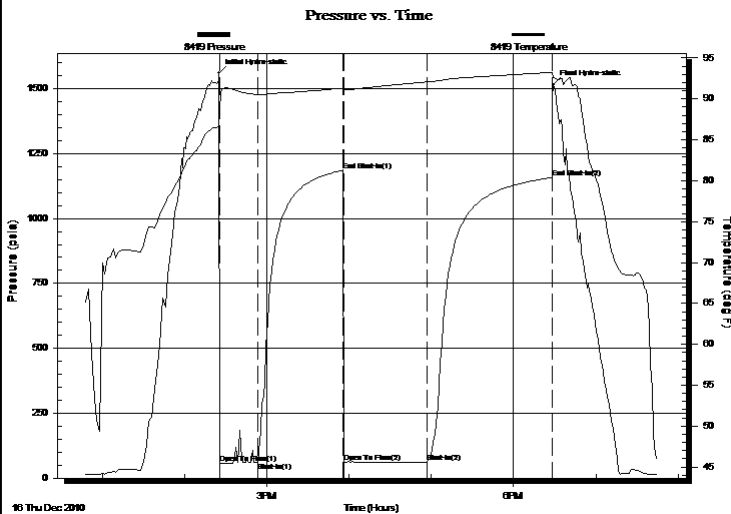
Formation: **LKC 35' ZONE**
 Deviated: No Whipstock: ft (KB)
 Time Tool Opened: 14:25:30
 Time Test Ended: 19:45:00
 Interval: **3045.00 ft (KB) To 3080.00 ft (KB) (TVD)**
 Total Depth: 3080.00 ft (KB) (TVD)
 Hole Diameter: 7.88 inches Hole Condition: Poor
 Test Type: Conventional Bottom Hole (Initial)
 Tester: JARED SCHECK
 Unit No: 3320-GB-120
 Reference Elevations: 1789.00 ft (KB)
 1782.00 ft (CF)
 KB to GR/CF: 7.00 ft

Serial #: 8419

Inside

Press@RunDepth: 61.62 psia @ 3076.00 ft (KB) Capacity: 5000.00 psia
 Start Date: 2010.12.16 End Date: 2010.12.16 Last Calib.: 2010.12.16
 Start Time: 12:47:00 End Time: 19:45:00 Time On Btm: 2010.12.16 @ 14:25:00
 Time Off Btm: 2010.12.16 @ 18:29:00

TEST COMMENT: 30/INITIAL OPEN:WEAK BLOW BUILT 2 1/2 INCHES INTO WATER IN 30 MINUTES
 60/INITIAL SHUT IN:NO BLOW BACK
 60/FINAL OPEN:VERY WEAK SURFACE BLOW BUILT 1/2 INCH INTO WATER IN 60 MINUTES
 90/FINAL SHUT IN:NO BLOW BACK



PRESSURE SUMMARY

Time (Min.)	Pressure (psia)	Temp (deg F)	Annotation
0	1559.51	87.95	Initial Hydro-static
1	56.39	88.59	Open To Flow (1)
29	61.70	90.53	Shut-In(1)
91	1185.59	91.32	End Shut-In(1)
92	60.98	91.09	Open To Flow (2)
152	61.62	92.08	Shut-In(2)
243	1157.68	93.25	End Shut-In(2)
244	1514.64	92.64	Final Hydro-static

Recovery

Length (ft)	Description	Volume (bbl)
40.00	MUD	0.56

Gas Rates

Choke (inches)	Pressure (psia)	Gas Rate (Mcf/d)



DRILL STEM TEST REPORT

TRANS PACIFIC OIL CORPORATION

CEDERBERG 'A' #1-1

100 S MAIN STE 200 WICHITA KS 67202+3735

1 -11 -14 RUSSELL

Job Ticket: 15696

DST#: 1

ATTN:

Test Start: 2010.12.16 @ 12:47:00

GENERAL INFORMATION:

Formation: **LKC 35' ZONE**

Deviated: No Whipstock: ft (KB)

Time Tool Opened: 14:25:30

Time Test Ended: 19:45:00

Test Type: Conventional Bottom Hole (Initial)

Tester: JARED SCHECK

Unit No: 3320-GB-120

Interval: 3045.00 ft (KB) To 3080.00 ft (KB) (TVD)

Reference Elevations: 1789.00 ft (KB)

Total Depth: 3080.00 ft (KB) (TVD)

1782.00 ft (CF)

Hole Diameter: 7.88 inches Hole Condition: Poor

KB to GR/CF: 7.00 ft

Serial #: 4005 Outside

Press@RunDepth: 1153.76 psia @ 3077.00 ft (KB)

Capacity: 5000.00 psia

Start Date: 2010.12.16

End Date: 2010.12.16

Last Calib.: 2010.12.16

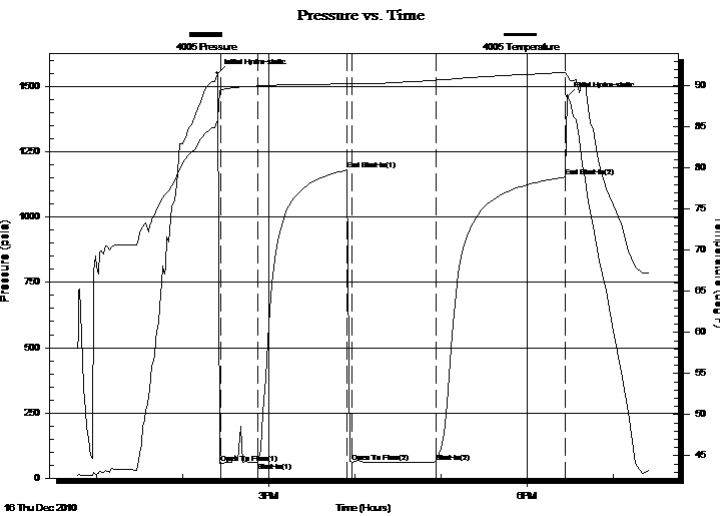
Start Time: 12:47:00

End Time: 19:25:09

Time On Btm: 2010.12.16 @ 14:24:10

Time Off Btm: 2010.12.16 @ 18:28:10

TEST COMMENT: 30/INITIAL OPEN:WEAK BLOW BUILT 2 1/2 INCHES INTO WATER IN 30 MINUTES
 60/INITIAL SHUT IN:NO BLOW BACK
 60/FINAL OPEN:VERY WEAK SURFACE BLOW BUILT 1/2 INCH INTO WATER IN 60 MINUTES
 90/FINAL SHUT IN:NO BLOW BACK



PRESSURE SUMMARY

Time (Min.)	Pressure (psia)	Temp (deg F)	Annotation
0	1551.71	85.90	Initial Hydro-static
2	58.39	89.38	Open To Flow (1)
28	61.64	89.98	Shut-In(1)
90	1180.32	90.27	End Shut-In(1)
94	61.02	90.24	Open To Flow (2)
152	62.63	90.69	Shut-In(2)
242	1153.76	91.64	End Shut-In(2)
244	1462.13	91.30	Final Hydro-static

Recovery

Length (ft)	Description	Volume (bbl)
40.00	MUD	0.56

Gas Rates

Choke (inches)	Pressure (psia)	Gas Rate (Mcf/d)



DRILL STEM TEST REPORT

TOOL DIAGRAM

TRANS PACIFIC OIL CORPORATION
 100 S MAIN STE 200 WICHITA KS 67202+3735
 ATTN:

CEDERBERG 'A' #1-1
1 -11 -14 RUSSELL
 Job Ticket: 15696 **DST#: 1**
 Test Start: 2010.12.16 @ 12:47:00

Tool Information

Drill Pipe:	Length: 3028.00 ft	Diameter: 3.80 inches	Volume: 42.47 bbl	Tool Weight: 1000.00 lb
Heavy Wt. Pipe:	Length: 0.00 ft	Diameter: 0.00 inches	Volume: 0.00 bbl	Weight set on Packer: 20000.00 lb
Drill Collar:	Length: 0.00 ft	Diameter: 0.00 inches	Volume: 0.00 bbl	Weight to Pull Loose: 48000.00 lb
			<u>Total Volume: 42.47 bbl</u>	Tool Chased 6.00 ft
Drill Pipe Above KB:	6.00 ft			String Weight: Initial 33000.00 lb
Depth to Top Packer:	3045.00 ft			Final 33000.00 lb
Depth to Bottom Packer:	ft			
Interval between Packers:	35.00 ft			
Tool Length:	58.00 ft			
Number of Packers:	2	Diameter: 6.75 inches		

Tool Comments:

Tool Description	Length (ft)	Serial No.	Position	Depth (ft)	Accum. Lengths
Change Over Sub	1.00			3023.00	
Shut-In Tool	5.00			3028.00	
Hydraulic Tool	5.00			3033.00	
Safety Joint	2.00			3035.00	
Packer	5.00			3040.00	23.00 Bottom Of Top Packer
Packer	5.00			3045.00	
Perforations	30.00			3075.00	
Recorder	1.00	8419	Inside	3076.00	
Recorder	1.00	4005	Outside	3077.00	
Bullnose	3.00			3080.00	35.00 Bottom Packers & Anchor
Total Tool Length:	58.00				



DRILL STEM TEST REPORT

FLUID SUMMARY

TRANS PACIFIC OIL CORPORATION
100 S MAIN STE 200 WICHITA KS 67202+3735
ATTN:

CEDERBERG 'A' #1-1
1 -11 -14 RUSSELL
Job Ticket: 15696 **DST#: 1**
Test Start: 2010.12.16 @ 12:47:00

Mud and Cushion Information

Mud Type: Gel Chem	Cushion Type:	Oil API:	deg API
Mud Weight: 9.00 lb/gal	Cushion Length: ft	Water Salinity:	ppm
Viscosity: 50.00 sec/qt	Cushion Volume: bbl		
Water Loss: 9.60 in ³	Gas Cushion Type:		
Resistivity: ohm.m	Gas Cushion Pressure: psia		
Salinity: 4300.00 ppm			
Filter Cake: 1.00 inches			

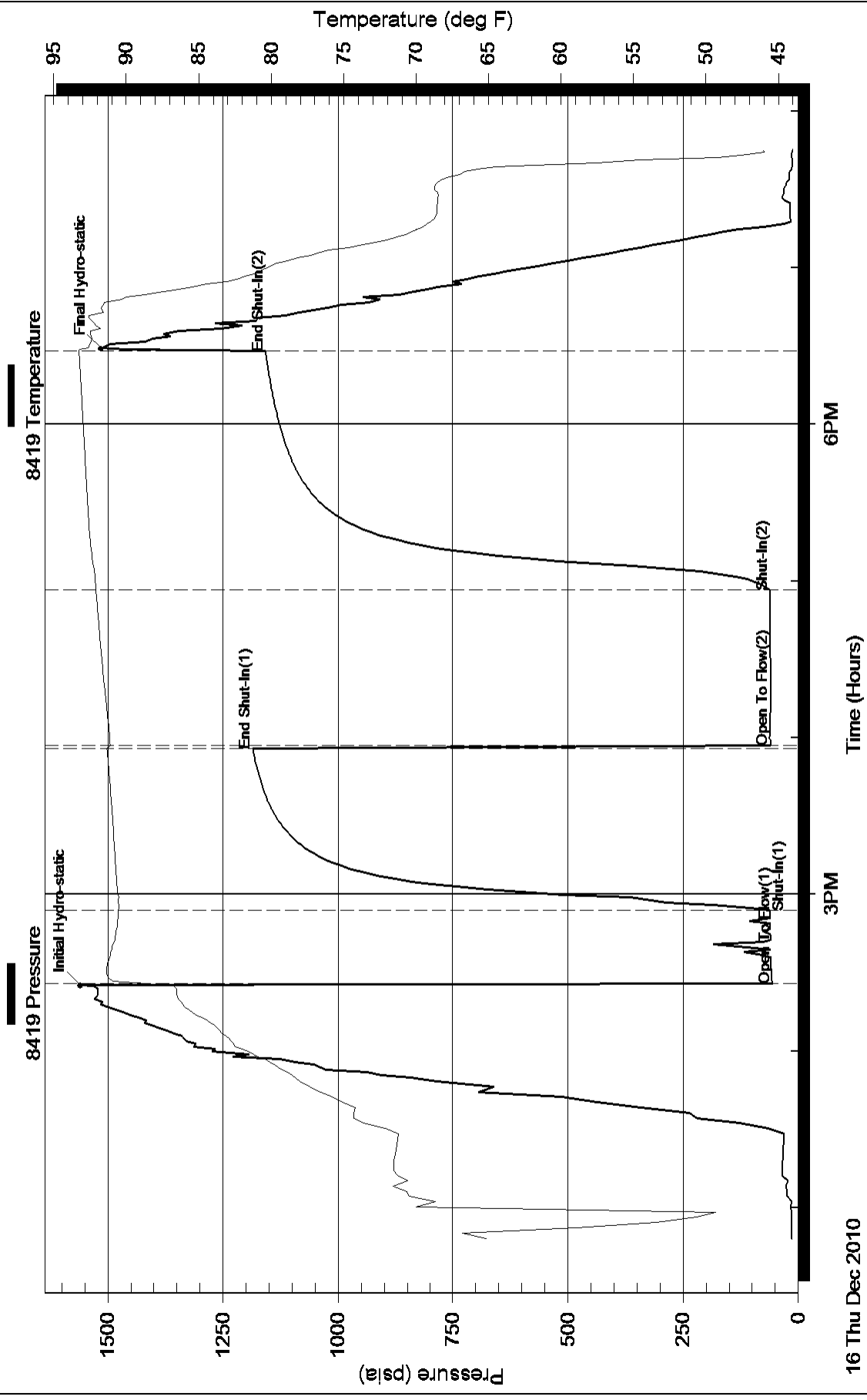
Recovery Information

Recovery Table

Length ft	Description	Volume bbl
40.00	MUD	0.561

Total Length: 40.00 ft Total Volume: 0.561 bbl
Num Fluid Samples: 0 Num Gas Bombs: 0 Serial #:
Laboratory Name: Laboratory Location:
Recovery Comments:

Pressure vs. Time

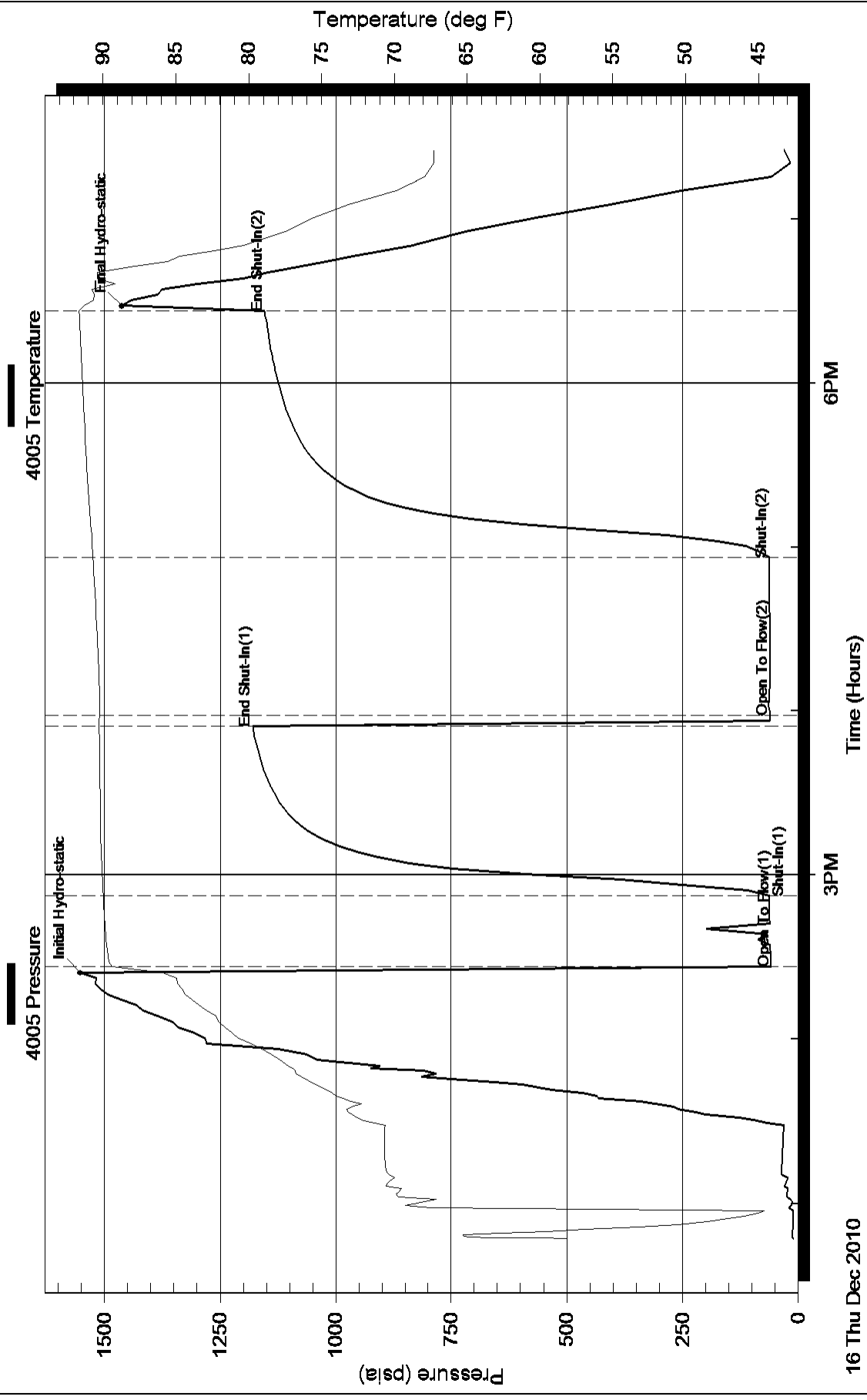


16 Thu Dec 2010

6PM

3PM

Pressure vs. Time



16 Thu Dec 2010

6PM

3PM