



DRILL STEM TEST REPORT

Prepared For: **MULL DRILLING COMPANY INC.**

1700 N WATERFRONT PKWY BLDG 1200
WICHITA KS 67206

ATTN: KEVIN KESSLER

6-19S-28W LANE

HINEMAN TRUST 1-6

Start Date: 2010.10.17 @ 11:00:00

End Date: 2010.10.17 @ 18:23:30

Job Ticket #: 1038 DST #: 1

Eagle Testers LLC.

P.O.Box 1011, Great Bend, KS 67530

620-617-7548

Printed: 2010.10.17 @ 12:10:00

MULL DRILLING COMPANY INC. HINEMAN TRUST 1-6 6-19S-28W LANE DST # 1 LKC -E-F 2010.10.17



DRILL STEM TEST REPORT

MULL DRILLING COMPANY INC.

HINEMAN TRUST 1-6

1700 N WATERFRONT PKWY BLDG 1200
WICHITA KS 67206

6-19S-28W LANE

Job Ticket: 1038

DST#: 1

ATTN: KEVIN KESSLER

Test Start: 2010.10.17 @ 11:00:00

GENERAL INFORMATION:

Formation: **LKC -E-F**

Deviated: No Whipstock: ft (KB)

Time Tool Opened: 12:48:30

Time Test Ended: 18:23:30

Test Type: Conventional Bottom Hole (Initial)

Tester: DAVID NICHOLS

Unit No: 15 62 MRT SCOTT CIT

Interval: 4050.00 ft (KB) To 4105.00 ft (KB) (TVD)

Reference Elevations: 2789.00 ft (KB)

Total Depth: 4105.00 ft (KB) (TVD)

2781.00 ft (CF)

Hole Diameter: 7.88 inches Hole Condition: Fair

KB to GR/CF: 8.00 ft

Serial #: 6666

Inside

Press @ RunDepth: 85.28 psig @ 4101.00 ft (KB)

Capacity: 5000.00 psig

Start Date: 2010.10.17

End Date:

2010.10.17

Last Calib.:

2010.10.17

Start Time: 11:00:00

End Time:

18:23:30

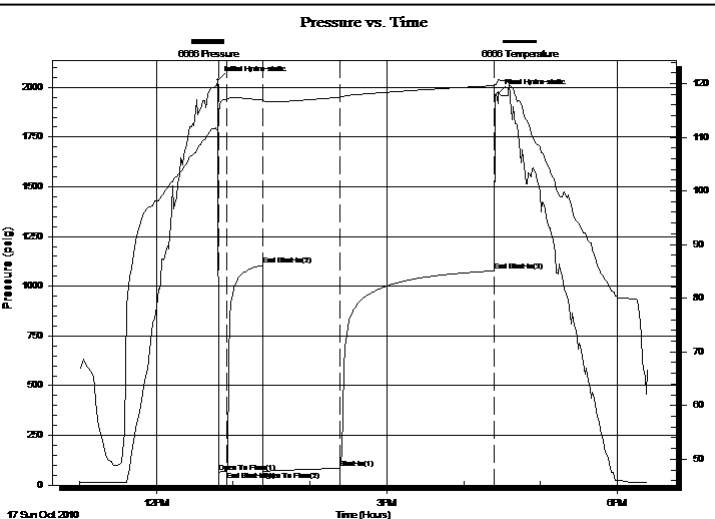
Time On Btm:

2010.10.17 @ 12:48:00

Time Off Btm:

2010.10.17 @ 16:27:00

TEST COMMENT: 5-INITIAL OPENING FAIR BLOW BUILT TO 2 INCHES INTO WATER
30-INITIAL SHUT IN NO BLOW BACK
60-FINAL OPENING WEAK BUILDING BLOW BUILT TO 3 INCHES INTO WATER
120-FINAL SHUT IN NO BLOW BACK



PRESSURE SUMMARY

Time (Min.)	Pressure (psig)	Temp (deg F)	Annotation
0	2035.74	111.33	Initial Hydro-static
1	65.39	114.33	Open To Flow (1)
7	68.33	117.10	End Shut-In(1)
35	1104.94	117.00	End Shut-In(2)
36	69.28	116.83	Open To Flow (2)
96	85.28	117.45	Shut-In(1)
216	1077.02	119.63	End Shut-In(3)
219	1970.12	120.78	Final Hydro-static

Recovery

Length (ft)	Description	Volume (bbl)
63.00	MUD 100%MUD	0.92

Gas Rates

Choke (inches)	Pressure (psig)	Gas Rate (Mcf/d)



DRILL STEM TEST REPORT

MULL DRILLING COMPANY INC.

HINEMAN TRUST 1-6

1700 N WATERFRONT PKWY BLDG 1200
WICHITA KS 67206

6-19S-28W LANE

Job Ticket: 1038

DST#: 1

ATTN: KEVIN KESSLER

Test Start: 2010.10.17 @ 11:00:00

GENERAL INFORMATION:

Formation: **LKC -E-F**

Deviated: No Whipstock: ft (KB)

Time Tool Opened: 12:48:30

Time Test Ended: 18:23:30

Test Type: Conventional Bottom Hole (Initial)

Tester: DAVID NICHOLS

Unit No: 15 62 MRT SCOTT CIT

Interval: 4050.00 ft (KB) To 4105.00 ft (KB) (TVD)

Reference Elevations: 2789.00 ft (KB)

Total Depth: 4105.00 ft (KB) (TVD)

2781.00 ft (CF)

Hole Diameter: 7.88 inches Hole Condition: Fair

KB to GR/CF: 8.00 ft

Serial #: 6651 Outside

Press @ RunDepth: 1079.03 psig @ 4102.00 ft (KB)

Capacity: 5000.00 psig

Start Date: 2010.10.17

End Date: 2010.10.17

Last Calib.: 2010.10.17

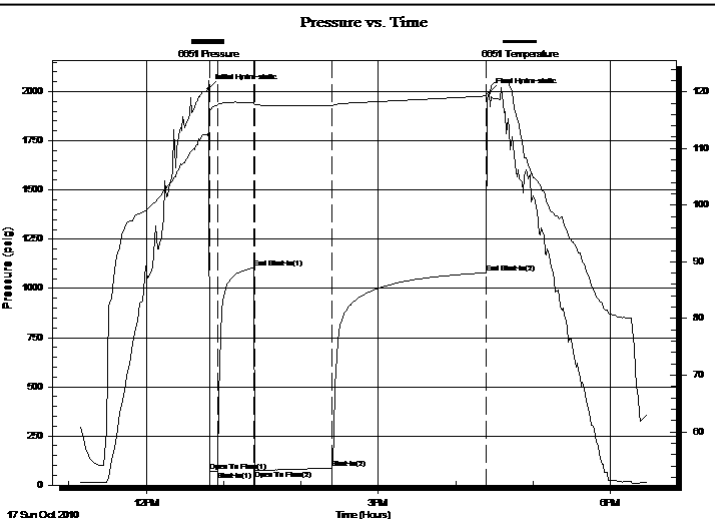
Start Time: 11:08:00

End Time: 18:29:30

Time On Btm: 2010.10.17 @ 12:48:00

Time Off Btm: 2010.10.17 @ 16:26:00

TEST COMMENT: 5-INITIAL OPENING FAIR BLOW BUILT TO 2 INCHES INTO WATER
30-INITIAL SHUT IN NO BLOW BACK
60-FINAL OPENING WEAK BUILDING BLOW BUILT TO 3 INCHES INTO WATER
120-FINAL SHUT IN NO BLOW BACK



PRESSURE SUMMARY

Time (Min.)	Pressure (psig)	Temp (deg F)	Annotation
0	2013.43	112.91	Initial Hydro-static
1	70.96	115.74	Open To Flow (1)
8	72.58	117.64	Shut-In(1)
36	1104.74	118.07	End Shut-In(1)
36	74.45	117.69	Open To Flow (2)
96	87.25	117.58	Shut-In(2)
216	1079.03	119.27	End Shut-In(2)
218	1993.66	119.58	Final Hydro-static

Recovery

Length (ft)	Description	Volume (bbl)
63.00	MUD 100%MUD	0.92

Gas Rates

Choke (inches)	Pressure (psig)	Gas Rate (Mcf/d)



DRILL STEM TEST REPORT

TOOL DIAGRAM

MULL DRILLING COMPANY INC.

HINEMAN TRUST 1-6

1700 N WATERFRONT PKWY BLDG 1200
WICHITA KS 67206

6-19S-28W LANE

Job Ticket: 1038

DST#: 1

ATTN: KEVIN KESSLER

Test Start: 2010.10.17 @ 11:00:00

Tool Information

Drill Pipe:	Length: 4035.00 ft	Diameter: 3.88 inches	Volume: 59.01 bbl	Tool Weight: 2000.00 lb
Heavy Wt. Pipe:	Length: 0.00 ft	Diameter: 0.00 inches	Volume: 0.00 bbl	Weight set on Packer: 20000.00 lb
Drill Collar:	Length: 0.00 ft	Diameter: 0.00 inches	Volume: 0.00 bbl	Weight to Pull Loose: 95000.00 lb
			<u>Total Volume: 59.01 bbl</u>	Tool Chased 0.00 ft
Drill Pipe Above KB:	0.00 ft			String Weight: Initial 56000.00 lb
Depth to Top Packer:	4050.00 ft			Final 56000.00 lb
Depth to Bottom Packer:	ft			
Interval between Packers:	55.00 ft			
Tool Length:	70.00 ft			
Number of Packers:	2	Diameter: 6.75 inches		

Tool Comments:

Tool Description	Length (ft)	Serial No.	Position	Depth (ft)	Accum. Lengths
SHUT IN TOOL	5.00			4040.00	
HYD S.I. Tool	5.00			4045.00	
TRAVEL COLER	2.00			4047.00	
Packer	3.00			4050.00	15.00 Bottom Of Top Packer
TRAVEL COLER	2.00			4052.00	
PACKER	3.00			4055.00	
CH OVER SUB	0.75			4055.75	
DRILL PIPE	31.50			4087.25	
CH OVER SUB	0.75			4088.00	
Anchor	12.00			4100.00	
Recorder	1.00	6666	Inside	4101.00	
Recorder	1.00	6651	Outside	4102.00	
BULL PLUG	3.00			4105.00	55.00 Anchor Tool

Total Tool Length: 70.00



DRILL STEM TEST REPORT

FLUID SUMMARY

MULL DRILLING COMPANY INC.
1700 N WATERFRONT PKWY BLDG 1200
WICHITA KS 67206
ATTN: KEVIN KESSLER

HINEMAN TRUST 1-6
6-19S-28W LANE
Job Ticket: 1038 **DST#: 1**
Test Start: 2010.10.17 @ 11:00:00

Mud and Cushion Information

Mud Type:	Gel Chem	Cushion Type:		Oil API:	deg API
Mud Weight:	9.00 lb/gal	Cushion Length:	ft	Water Salinity:	ppm
Viscosity:	48.00 sec/qt	Cushion Volume:	bbbl		
Water Loss:	7.20 in ³	Gas Cushion Type:			
Resistivity:	2800.00 ohm.m	Gas Cushion Pressure:	psig		
Salinity:	ppm				
Filter Cake:	inches				

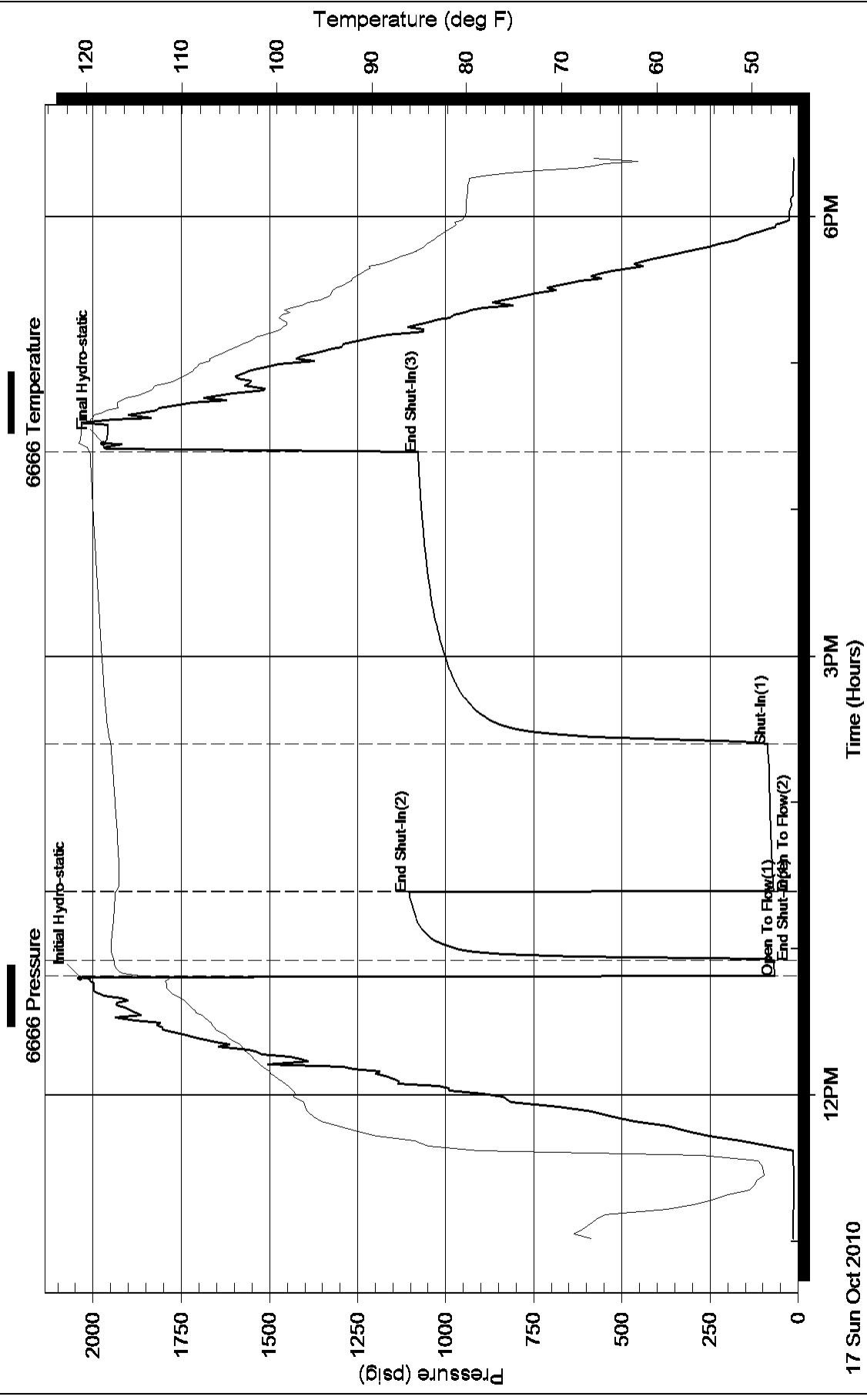
Recovery Information

Recovery Table

Length ft	Description	Volume bbl
63.00	MUD 100%MUD	0.921

Total Length: 63.00 ft Total Volume: 0.921 bbl
Num Fluid Samples: 0 Num Gas Bombs: 0 Serial #:
Laboratory Name: Laboratory Location:
Recovery Comments:

Pressure vs. Time



Pressure vs. Time

