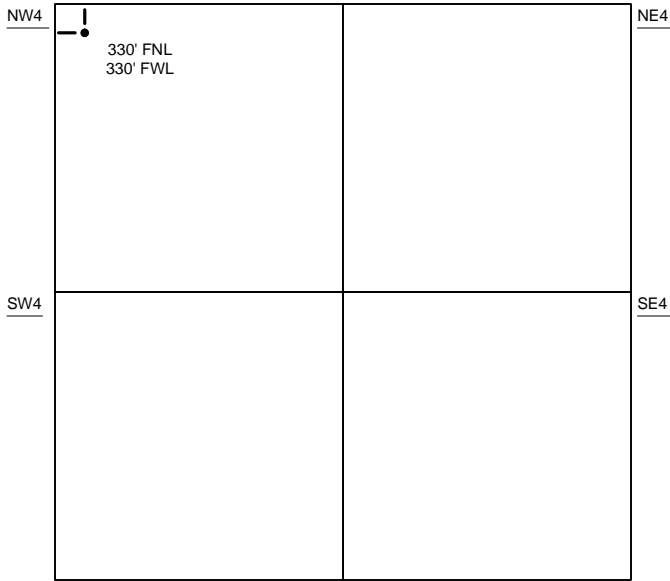


Proposed Plan of Construction
 James Operation Unit A-7
 Sec 16-T30S-R33W
 Haskell County, KS

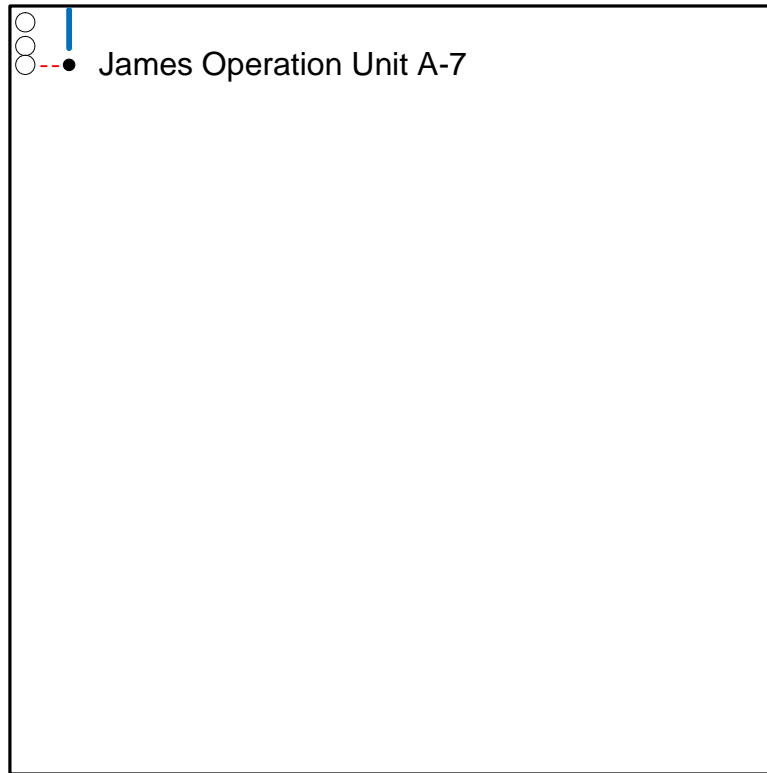
Co. Rd. 210



Sec 16 – T30S – R33W

NW4

The Proposed Tank Battery for the James Operation Unit A-7 is located in the NW of the NW quarter.



- Well Location
- Lease Roads
- - - Proposed Pipeline
- Tank Battery Equipment
- Power Lines
- - - Existing Pipeline

Detail of
 NW/4 Sec 16-T30S-R33W

Note-Drawing **Not** to Scale

