

GEOLOGIST'S REPORT

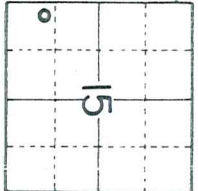
DRILLING TIME & SAMPLE LOG

COMPANY BEREXCO LLC NO. 3-15
 LEASE WEEDE LOCATION 990FSL & 330FWL
 COUNTY FINNEY TWP 22S RNG. 33W
 STATE KANSAS FIELD DAMME
 MEASUREMENTS ARE ALL FROM KB

CONTRACTOR BEREDCO RIG NO. 2
 COMM. 10-9-2010 COMP. 10-23-2010
 RTD 4850 LTD 4848
 No. of DST'S 6 No. of CORES NONE

SAMPLES SAVED FROM 3600 TO TD
 DRILLING TIME KEPT FROM 3600 TO TD
 SAMPLES EXAMINED FROM 3600 TO TD
 GEOLOGICAL SUPERVISION FROM 3600 TO TD
 GEOLOGIST ON WELL EDWIN H. GRIEVES

FORMATION TOPS	SAMPLE	LOG	SUBSEA
BASE HEERNER	3602	3799	- 993
TORONTO	3813	3810	- 904
LANSING FM.	3838	3838	- 932
KC "A"	4174	4175	- 1269
KC "B"	4523	4518	- 1312
MARMATON	4338	4334	- 1428
PAWNEE	4444	4410	- 1504
FT. SCOTT	4460	4439	- 1533
CHEROKEE	4641	4454	- 1588
MORROW	4670	4630	- 1724
ST. GENEVIEVE	4688	4670	- 1767
TD	4850	4848	- 1790

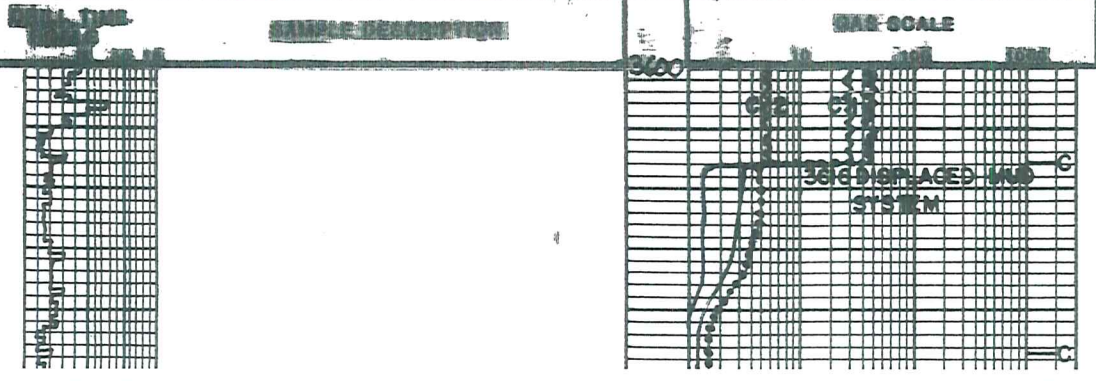


ELEVATIONS
 KB 2906
 DF 2904
 GL 2894
 SCALING RECORD
 8/8 of 1748 w / . SX.
 01 w / . SX.
 01 w / . SX.
 01 w / . SX.
 EL. LOG ACCESSARY
 DEN. MET. GR. CALLIPER
 ML

REMARKS Earth-Tech had an unmanned gas detection trailer on this well from 3600 feet to total depth.

Thank you,
 Edwin H. Grievess
 Geologist

LITHOLOGY SANDSTONE LIMESTONE SHALE CHERT SILTSTONE DOLOMITE GRANITE WASH MUD & GIP	CHROMATOGRAPH HOT WIRE BY TOTAL GAS VOLUME C1 = METHANE C2 = ETHANE C3 = PROPANE C4 = ISOBUTANE C5 = BUTANE C6 = ISOPENTANE C7 = PENTANE
--	--



Interbedded Limestones/scattered thin Shs
① Faster Dalg. Lms. trs. to hyp. trs. wht to
crum.-chlk + H. tan to tan; crypto. to v. f. n.
xln; sub-chlk, sub-sucro. to v. sucro; dul. H. to
trs. H. yel. + fluor; No Cut; abn. por to fr.
+ trs. good micro-p.p. to interxln por.

② Slower Dalg. Lms. H. gray, grayish tan to
tan; sl. to fely. Shly. IP's; crypto. to v. f. n.
xln; chlk sub-chlk for shly, sub-sucro and
packstn.; dul. H. yel. to trs. H. yel. + fluor;
No Cut; No Vis. por

③ Scattered thin Shs. med. to v. drk.
gray. - calc. to v. drk. gray; oddish crs.
looking

3700

Sh. v. drk. gray to black carb. looking

3800

Sh. H. gray. - greenish IP's; calc IP's

Lms. abn. wht. to crum.-chlk + H. tan; crypto
to v. v. f. n. xln; sub-chlk, sub-sucro to v. sucro;
dul. H. to H. yel. + fluor; No Cut; abn. por to
fr. micro-p.p. por + prob. interxln por
Lms. grayish. tan to tan; crypto. to v. f. n. xln; sub-chlk
sub-sucro + packstn.; dul. H. to H. yel. + fluor.
No Cut; No Vis por

Lms. grayish. tan to tan; crypto to v. v. f. n. xln
trs. opalitic IP's; chlk, sub-chlk, sub-sucro
+ packstn.; dul. H. to H. yel. + fluor; No Cut
No Vis por

Lms. trs. wht. to crum.-chlk + H. tan to
tan; crypto. to v. v. f. n. xln; phantom opalitic IP's
to trs. opalitic; chlk, sub-chlk, sub-sucro to
trs. sucro; dul. H. to H. yel. + fluor; No Cut; trs
to abn. por to fr. micro-p.p. por.

3900

Lms. grayish. tan to tan; crypto to v. v. f. n. xln
hyp. trs. phantom opalitic; sub-chlk,
sub-sucro to trs. sucro + packstn.
dul. H. yel. + fluor; No Cut; No Vis por.

Lms. trs. wht. to crum.-chlk + H. tan to
tan; grayish. IP's; crypto to v. v. f. n. xln; sub-chlk
sub-sucro to sucro; phantom opalitic IP's
dul. H. to abn. H. yel. + fluor; No Cut; abn. por
to fr. + trs. gd. micro-p.p. por + poss interxln IP's

Lms. similar 3892-3946

Base Herdner

3802-896

TRAP CHECK

Toronto

3873-907

Lansing Fm

3838-932

TRAP CHECK

Lms. similar 3946-3964

Lms. similar 3892-3946

Lms. 2bn. wht. to crm. chlk & H. tan to tan; crypto. to v.v. f. xln; w/ trs. wht. to tan, med. to coarse blk x/s & fragm.; phantom oolitic to oolitic & trs. phantom oolitic to trs. oolitic, dull H. to H. yel. fluor.; No Cut; 2bn. pr. to fr. & trs. qd. to excel. oolitic, p.p., micro-p.p. & poss. vugular & intercal. por. IP's

Lms. grayish. tan to tan; crypto. to v.v. f. xln; oolitic IP's; sub-chlk, sub-sucro. to sucro. & packstn.; dul. H. to H. yel. fluor.; No cut; No Vis Por. w/ trs. Chert gray, opaque

Lms. similar 4001-4022 only porosity Ranges from pr to fr. only

Lms. similar 4022-4052

Lms. extr. 2bn. wht to crm. - chlk w/ chlk oolites IP's and tan; crypto. to v.v. f. xln; v. to extly. oolitic &/or v. to rly. oolitic; matrix: trs. chlk to trs. sub-chlk, sub-sucro. to v. sucro.; yel. fluor.; No cut; in matrix 2bn. pr. to fr. qd. to excel. oolitic, p.p., micro-p.p. por. & poss. intercal. por.

Lms. trs. wht. to crm. - chlk & tan; crypto. to v.v. f. xln; v. to extly. oolitic &/or v. to rly. oolitic; matrix trs. sub-chlk, trs. sub-sucro. & mostly packstn.; dul. H. to trs. med. H. yel. fluor.; No cut; v. 2bn. pr. to fr. qd. to excel. oolitic Por. & Quest. Perm.

Lms. tanish gray to grayish. tan to tan; crypto. to v.v. f. xln; sub-chlk, sub-sucro. to sucro. & packstn.; sub-lithographic; dul. H. to trs. H. yel. fluor.; No cut; No Vis Por. Sh. v. drk. gray to black - carb

4174-4201 Lms. similar 4158-4171

4201-4205 Lms. trs. wht. to crm. - chlk & tan, grayish IP's; crypto. to v.v. f. xln; sl. to extly. oolitic &/or sl. to extly. oolitic; matrix sub-sucro. to sucro. & packstn.; dul. H. to trs. H. yel. fluor.; No cut; 2bn. pr. to fr. qd. to excel. oolitic Por.; Quest. Perm.

4205-4223 Lms. similar 4158-4171

Lms. similar 4158-4171

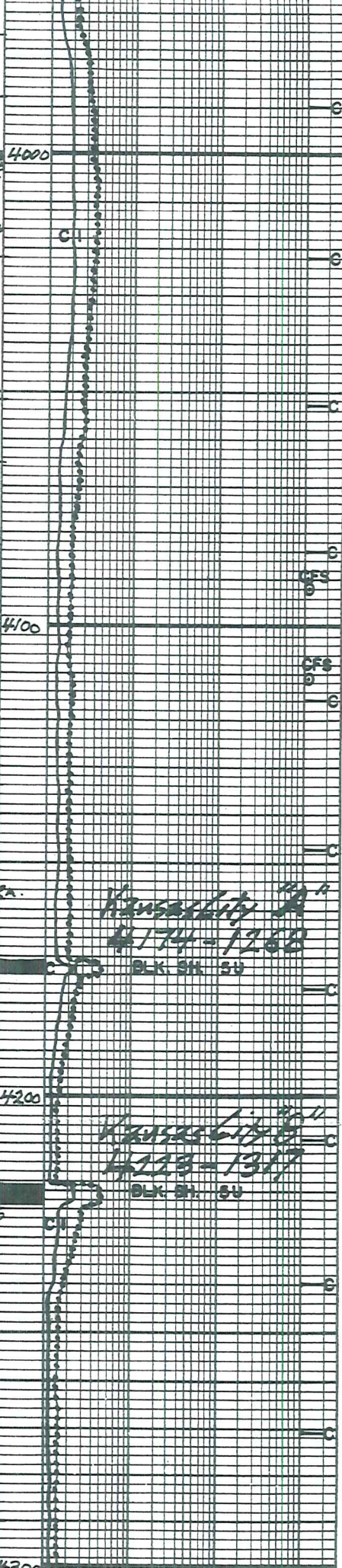
Sh. v. drk. gray to black - carb

4223-4245 Lms. H. gray, grayish. tan to tan; crypto. to v.v. f. xln; sub-chlk, sub-sucro. to sucro. & packstn.; trs. sub-lithographic; dul. H. to trs. H. yel. fluor.; No cut; No Vis Por.

4245-4254 Lms. 2bn. wht to crm. chlk & tan; crypto. to v.v. f. xln; trs. sub-chlk, sub-sucro. to sucro.; phantom oolitic to trs. oolitic; phantom oolitic IP's; dul. H. to H. yel. fluor.; No cut; 2bn. pr. to fr. qd. to excel. oolitic, p.p., micro-p.p. por.; Quest. Perm.

Lms. similar 4223-4245 w/ hvy trs phantom oolitic IP's

Lms. similar 4245-4254



Kansas City #1
4174-1268
BLK SH SU

Kansas City #4
4223-1317
BLK SH SU

Loss silt & clay IP's
 4657-4661 Qtz sdol similar 4649
 to 4653 w/No Prite but with
 Silt. res. glauc. IP's

"E" 4661-70 Lms abn wht to crm-chlk w/chlk
 oolites IP's + tan w/abn tan to 6 an from oil
 stn. faint oil ader; extaly oolitic (sm to med)
 matrix v. u. fn. xln. chlk, sub-chlk, sub-sucro
 to v. sucro; dul. glauc. to glauc. yel. fluor.

"A" w/flush to excel stream cuts
 abn. pr. tan. qd. to excel p.p. micro pp;
 inter oolitic + jct to xln. glauc.

"C" + silt. res. tan to oil stn
 extaly micro oolitic to tan Qtz

"D" sub. v. u. fn. xln. ang. matrix
 v. u. fn. xln. sub-sub-sucro
 dul. glauc. to glauc. yel. fluor;

"E" flush to excel stream cuts; No Vis
 w/tas chert gray, silt. weathered
 IP's w/abn. bas. to chlk oil stn
 slow qd. cuts IP's & tr. chlk
 gray tan, brn to drangy, opaque
 to trans.

"F" Lms lt. gray to lt. tan, crypto to v. fn.
 xln. j. extaly, micro oolitic; silt. res. sily
 v. u. fn. qd. ang. matrix sub-chlk
 sub-sucro to sucro; dul. yel.
 fluor. j. No Cut; No Vis for

"G" Lms. H. tan to tan; crypto to v. u. fn.
 v. oolitic (sm, med + tr. lg) matrix
 sub-chlk, sub-sucro to sucro;
 dul. yel. fluor. j. No Cut; No Vis for

"H" 4696-4703 Lms. H. tan to sprd to even
 drk. tan to lt. brn oil stn. tr. oil ader
 extaly oolitic (sm, med + tr. lg); matrix
 sub-sucro to v. sucro; glauc. yel.
 fluor w/flush to excel stream cuts
 abn. pr. tan. qd. inter oolitic, p.p.
 micro pp + prob. interaly, p.p.
 abn sm. frags + loose oolites

4703- Lms. tr. to hv. tr. wht to crm.
 Chlk + H. tan to tan, grayish IP's
 crypto to v. u. fn. xln.; phantom oolitic
 to v. oolitic (sm, med to lg) matrix
 sub-chlk, sub-sucro to sucro; dul. yel.
 fluor. j. No Cut; No Vis for
 w/tas tan, crypto xln, sub-litho. h. h.
 + tas chert gray to tan, opaque

4703-4792 Lms. tr. to hv. tr. wht to crm
 chlk + lt. tan to tan, grayish IP's; crypto
 to v. u. fn. xln.; phantom oolitic to v. oolitic
 (sm, med to lg) matrix sub-chlk, sub-sucro
 + packstn. w/tas to abn. non-oolitic
 sub-lithographic; dul. lt. yel. to dul
 yel. fluor; No Cut, No Vis for w/tas.
 Chert gray to tan, opaque

Lms. tr. wht. to crm.-chlk and gray s
 to tan, drk tan + lt. brn; crypto.
 to v. u. fn. xln.; tr. sub-chlk, sub-sucro
 packstn and sub-lithographic;
 hv. tr. w/tas phantom oolites
 dul. lt. to lt. yel. fluor; No Cut, No Vis for
 w/tas chert wht, gray to tan, opaque

TD 4850

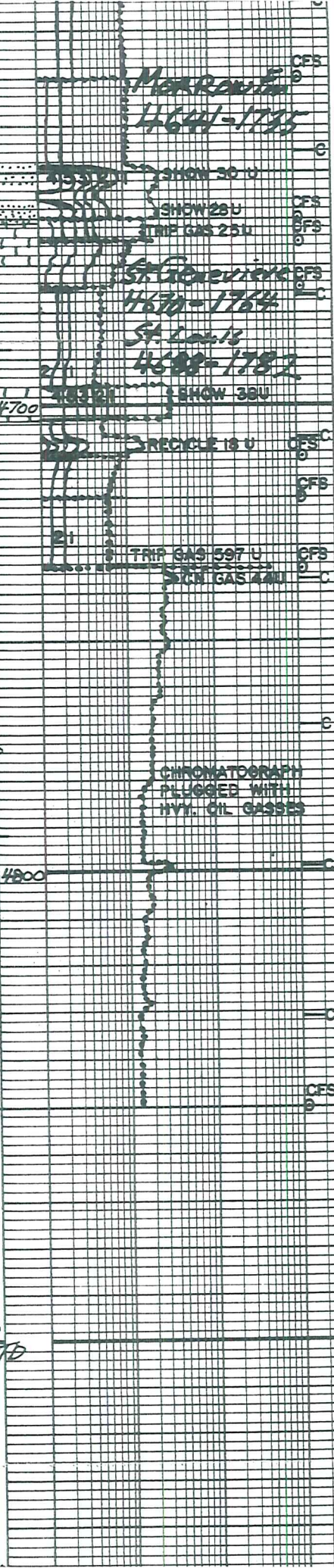
7 7/8 inch Bit Irr Co: IN OUT
 Bit #1 New Smith F271 1748 4850 TD

Dev. Surv.:
 1. 597 1/2 3. 1754 3/4 5. 4375 1°
 2. 1218 1/2 4. 2711 1/4 6. 4850 TD

C.I.R. Points

1. 4092	7. 4425	13. 4665
2. 4411	8. 4435	14. 4675
3. 4303	9. 4459	15. 4711
4. 4375	10. 4570	16. 4720
5. 4397	11. 4630	17. 4765
6. 4420	12. 4660	18. 4850

Daily DRlg PROGRESS



1.	3600	1:04 AM	10-14-2010
2.	3734	7:00 AM	10-14-2010
3.	4267	7:00 AM	10-15-2010
4.	4375	7:00 AM	10-16-2010
5.	4397	7:00 AM	10-17-2010
6.	4420	7:00 AM	10-18-2010
7.	4610	7:00 AM	10-19-2010
8.	4665	7:00 AM	10-20-2010
9.	4735	7:00 AM	10-21-2010
10.	4797	7:00 AM	10-22-2010
11.	4850	7:00 AM	10-23-2010

DST#1 Marmaton 4350-4375

To GD Building Blow BOB 15 min
 Fo GD Building Blow BOB 18 min
 Rec 930 ft GIP + 280 Oil + Gas East Mud
 BHT 112°F Grav. Oil 36 API
 IHP 2074#
 IFF 19-24# in 30 min
 FSIP 528# in 60 min
 FFP 60-110# in 60 min
 FSIP 529# in 120 min
 FHP 2051#

DST#2 Marmaton 4375-4397

To Weak Surface Blow Fo No Blow
 Rec 30 ft Sl. Oil Cut Mud 28 oil 98% mud
 BHT 108°F
 IHP 2052# FFP 24-29# in 30 min
 IFF 16-22# in 30 min FSIP 279# in 120 min
 FSIP 244# in 60 min FHP 2026#

DST#3 Pawnee 4398-4420

To Weak Surface Blow Fo No Blow
 Rec 30 Sl. Oil Cut Mud Trace Oil 100% Mud
 BHT 109°F
 IHP 2058# FFP 25-31# in 30 min
 IFF 16-24# in 30 min FSIP 538# in 120 min
 FSIP 571# in 60 min FHP 2009#

DST#4 Morrow 4640-4665 Mis Rust

DST#5 Morrow 4629-4665
 To Weak Blow built to 1/2" in bucket
 Fo No Blow
 Rec 15 ft 100% Mud BHT 114°F
 IHP 2247#
 IFF 21-25# in 30 min
 FSIP 65# in 60 min
 FFP 27-28# in 30 min
 FSIP 63# in 120 min
 FHP 2193#

DST#6 St Louis 4690-4735

Rec 1300 ft GIP + 730 ft clean Oil
 BHT 118°F Oil Grav. 32 API
 IHP 2223#
 IFF 31-151# in 30 min
 FSIP 1085# in 60 min
 FFP 164-273# in 60 min
 FSIP 1076# in 120 min
 FHP 2205#

Mud Info:

Date	10-14-10 6 AM	10-15-10 6:50A	10-16-10 6 AM	10-17-10 5:45A	10-18-10 9:30A	10-19-10 9 AM	10-20-10 10 AM	10-21-10 BAW
Depth	3710	4272	4375	4397	4420	4630	4665	4735
Wt.	8.7	9.3	9.3	9.4	9.4	9.1	9.3	9.3
Vis	51	44	57	57	56	53	58	60
PV	16	14	18	18	17	16	17	18
YP	19	15	20	21	20	19	20	21
GS	1 1/8	1 1/8	1 1/4	1 1/4	1 1/4	1 1/4	1 1/2	1 1/2
WL	8.8	8.8	8.0	7.3	7.6	7.3	7.3	7.6
Calc	1/32	1/32	1/32	1/32	1/32	1/32	1/32	1/32
pH	11.0	10.0	10.0	10.0	10.5	10.5	10.0	10.0

Mud Info:

Date	10-14 6AM	10-15 6:50A	10-16 6AM	10-17 6:45A	10-18 7:30A	10-19 7AM	10-20 10AM	10-21 10AM
Depth	3710	4272	4375	4397	4420	4630	4465	4775
Wt	8.7	9.3	9.3	9.4	9.4	9.1	9.3	9.3
Vis	51	44	57	57	56	53	58	60
PV	16	14	18	18	17	16	17	18
YP	19	15	20	21	20	19	20	21
GS	14/36	13/33	15/44	16/46	15/44	14/39	15/42	16/45
WL	8.8	8.8	8.0	7.2	7.6	7.2	7.2	7.6
Clake	1/32	1/32	1/32	1/32	1/32	1/32	1/32	1/32
pH	11.0	10.0	10.0	10.0	10.5	10.5	10.0	10.0
Chl	1800	1700	1900	2300	2800	3100	3900	4200
Ca	40	40	40	40	40	40	40	40
LCM	4	3	3	2	2	3	3	3

Date	10-22 7:30A							
Depth	4830							
Wt	9.3							
Vis	53							
PV	17							
YP	20							
GS	13/39							
WL	8.8							
Clake	1/32							
pH	9.0							
Chl	5300							
Ca	60							
LCM	3							

OPERATOR BEREXCO LLC LOCATION 990FSL & 330FWL
 LEASE WEDE NO. 3-15 SEC. 15 TWP. 22S RNG. 33W
 ELEVATION 2906KB RTD 4850 COUNTY FINNEY STATE KANSAS