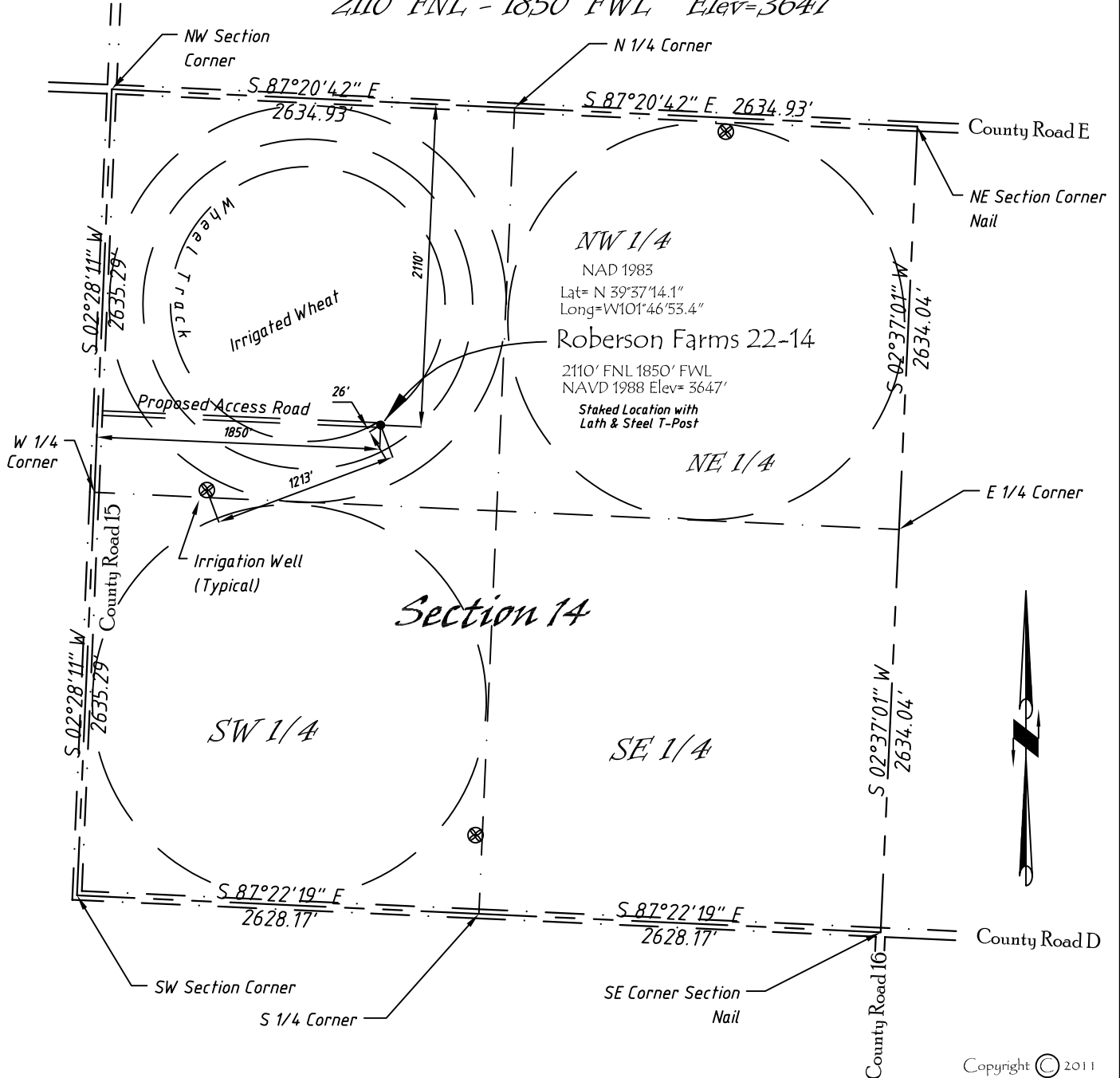


Well Location Map

# Roberson Farms 22-14

SE 1/4, NW 1/4, Section 14, T5S, R40W, 6th P.M. Cheyenne County, Kansas  
 2110' FNL - 1850' FWL Elev=3647'



Directions:

From the Intersection of County Road 15 & Hwy 36 @ St Francis, KS, Go S on County Rd 15 Approximately 9.9 miles then E 1850 feet to Staked location.

*This Drawing is for Construction Purposes Only*

<b>Noble Energy, Inc.</b>		
<b>DRAWN</b> GP	<b>DATE</b> 1/3/11	Section 14 T5S, R40W, 6th P.M. Cheyenne County, KS
<b>FB</b> B7+P14	<b>EQ</b> HijPro	
<b>SCALE</b> 1"=1000'	<b>SHEET</b> 1 of 1	<b>PROJECT NO.</b> 1570.133

Copyright © 2011

North Winds Surveys, Inc.  
 402 Walnut  
 Kanorado, KS  
 785/399/2557