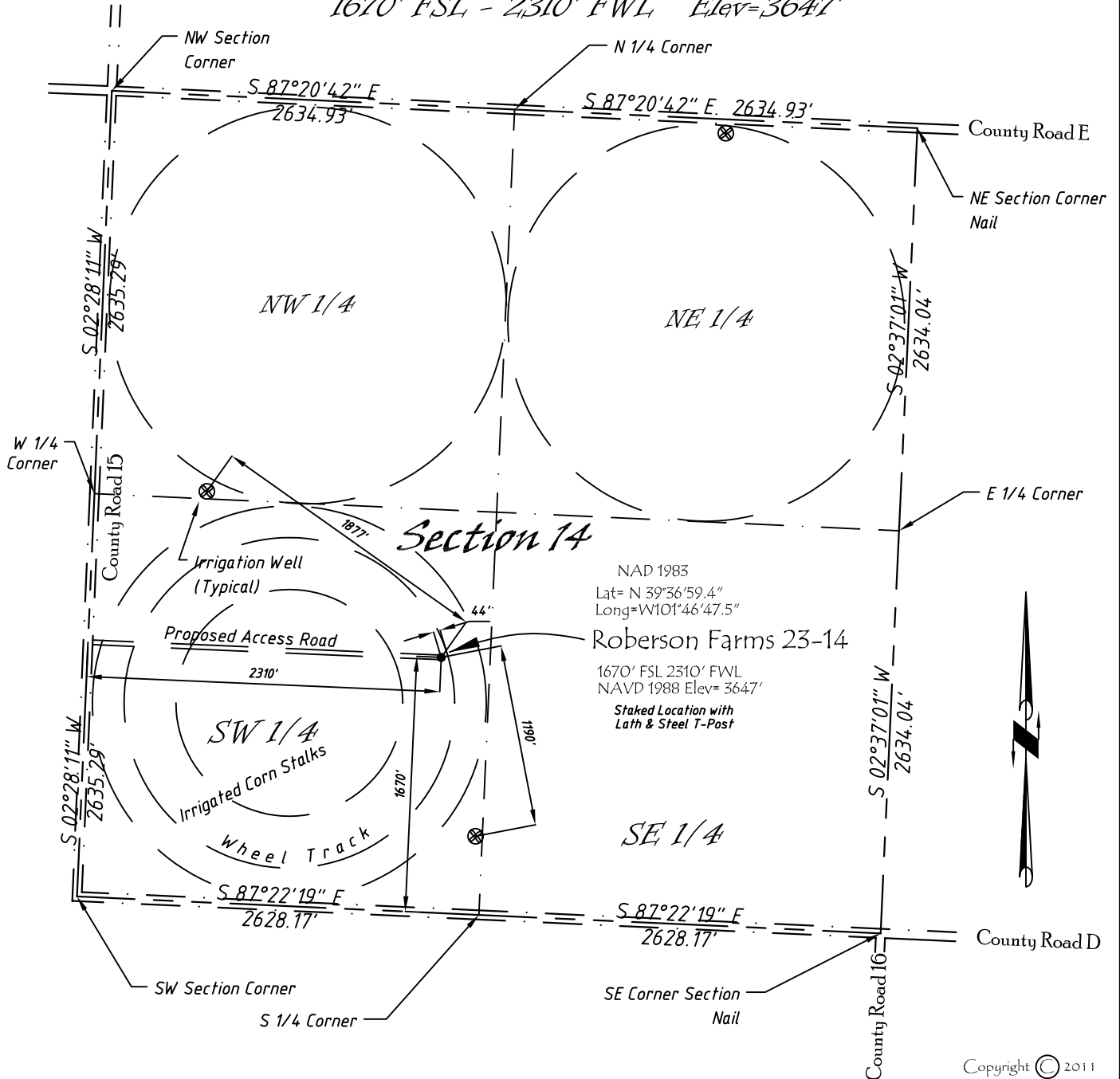


Well Location Map

# Roberson Farms 23-14

NE 1/4, SW 1/4, Section 14, T5S, R40W, 6th P.M. Cheyenne County, Kansas  
 1670' FSL - 2310' FWL Elev=3647'



NAD 1983  
 Lat= N 39°36'59.4"  
 Long=W101°46'47.5"  
 Roberson Farms 23-14  
 1670' FSL 2310' FWL  
 NAVD 1988 Elev= 3647'  
 Staked Location with  
 Lath & Steel T-Post

Copyright © 2011

Directions:

From the Intersection of County Road 15 & Hwy 36 @ St Francis, KS, Go S on County Rd 15 Approximately 10.2 miles then E 2310 feet to Staked location.

*This Drawing is for Construction Purposes Only*

Noble Energy, Inc.		
<b>DRAWN</b> GP	<b>DATE</b> 1/3/11	Section 14
<b>FB</b> B7+P14	<b>EQ</b> HjPro	T5S, R40W, 6th P.M. Cheyenne County, KS
<b>SCALE</b> 1"=1000'	<b>SHEET</b> 1 of 1	<b>PROJECT NO.</b> 1570.134

