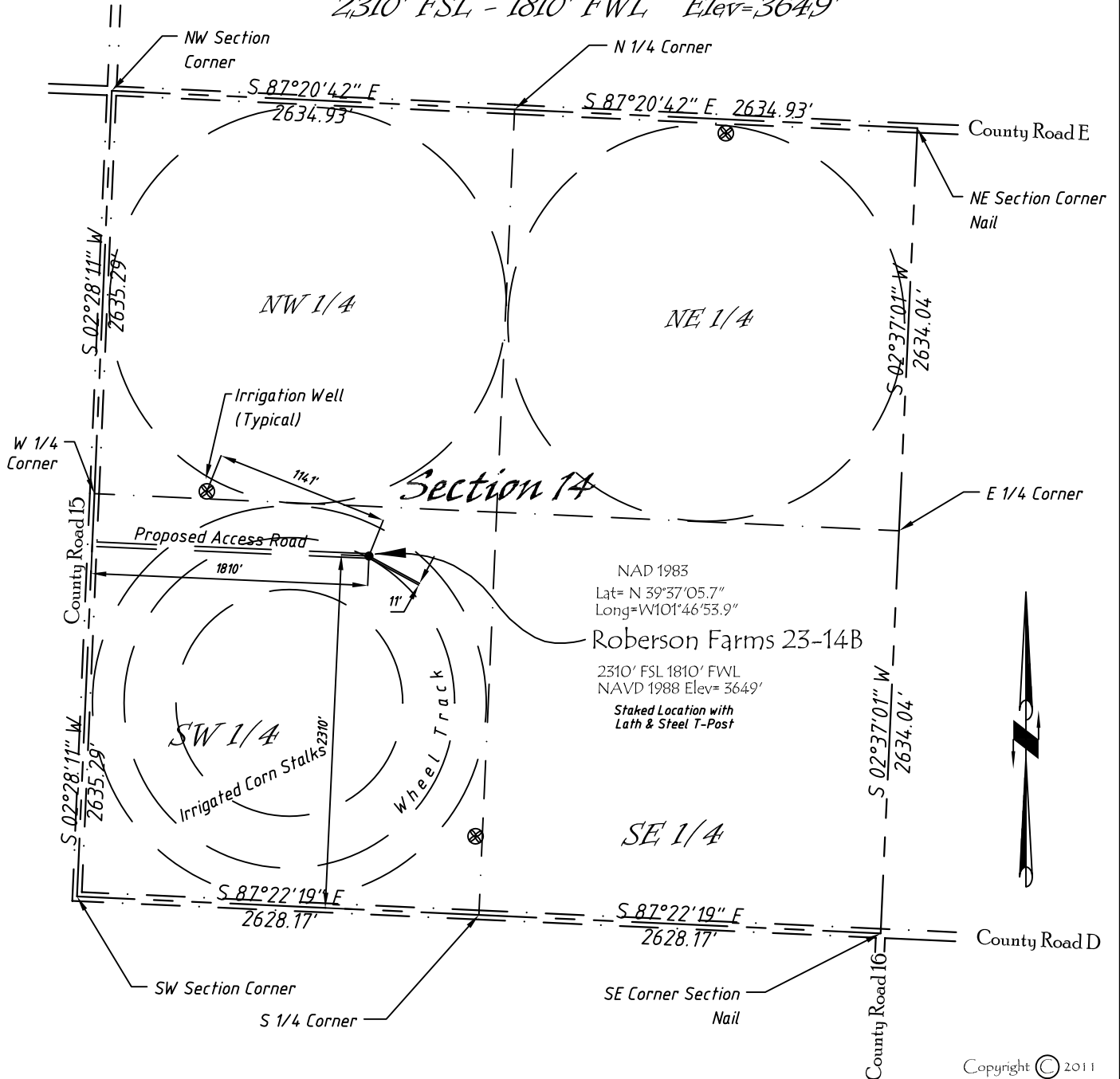


Well Location Map

Roberson Farms 23-14B

NE 1/4, SW 1/4, Section 14, T5S, R40W, 6th P.M. Cheyenne County, Kansas
 2310' FSL - 1810' FWL Elev=3649'



Copyright © 2011

Directions:

From the Intersection of County Road 15 & Hwy 36 @ St Francis, KS, Go S on County Rd 15 Approximately 10.1 miles then E 1810 feet to Staked location.

This Drawing is for Construction Purposes Only

Noble Energy, Inc.		
DRAWN GP	DATE 1/3/11	Section 14
FB B7+P14	EQ HjPro	T5S, R40W, 6th P.M. Cheyenne County, KS
SCALE 1"=1000'	SHEET 1 of 1	PROJECT NO. 1570.135

North
Winds
Surveys, Inc.

402 Walnut
Kanorado, KS
785/399/2551