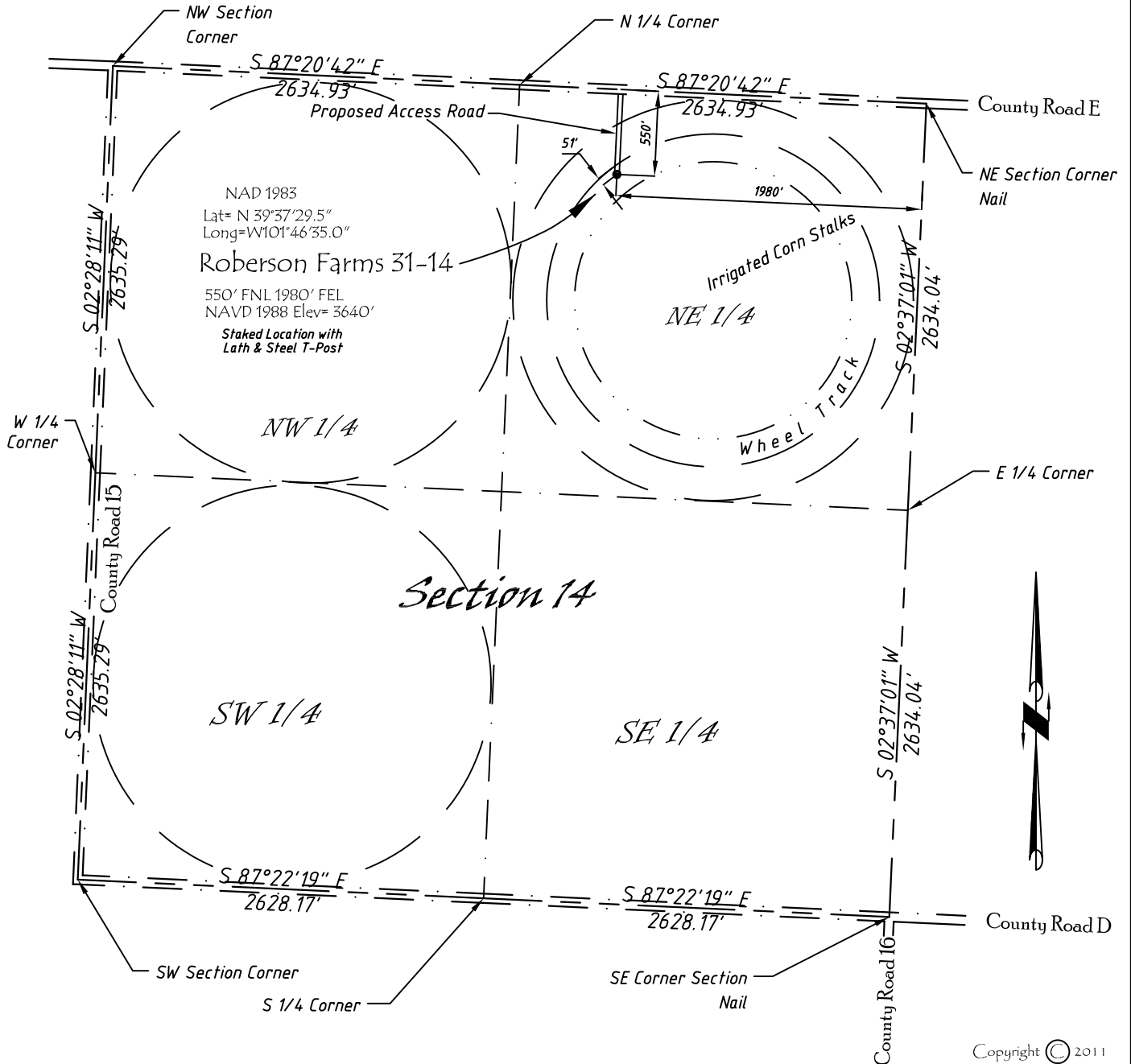


Well Location Map

Roberson Farms 31-14

NW 1/4, NE 1/4, Section 14, T5S, R40W, 6th P.M. Cheyenne County, Kansas
 550' FNL - 1980' FEL Elev=3640'



Copyright © 2011

Directions:

From the Intersection of County Road 15 & Hwy 36 @ St Francis, KS, Go S on County Rd 15 Approximately 9.5 miles, to County Road E then E 0.6 miles Then S 550 feet to Staked location

This Drawing is for Construction Purposes Only

Noble Energy, Inc.		
DRAWN GP	DATE 1/06/11	Section 14 T5S, R40W, 6th P.M. Cheyenne County, KS
FB B74 P15	EQ HiPro	
SCALE 1"=1000'	SHEET 1 of 1	PROJECT NO. 1570.137

North
Winds
Surveys, Inc.

402 Walnut
Kanorado, KS
785/399/2557