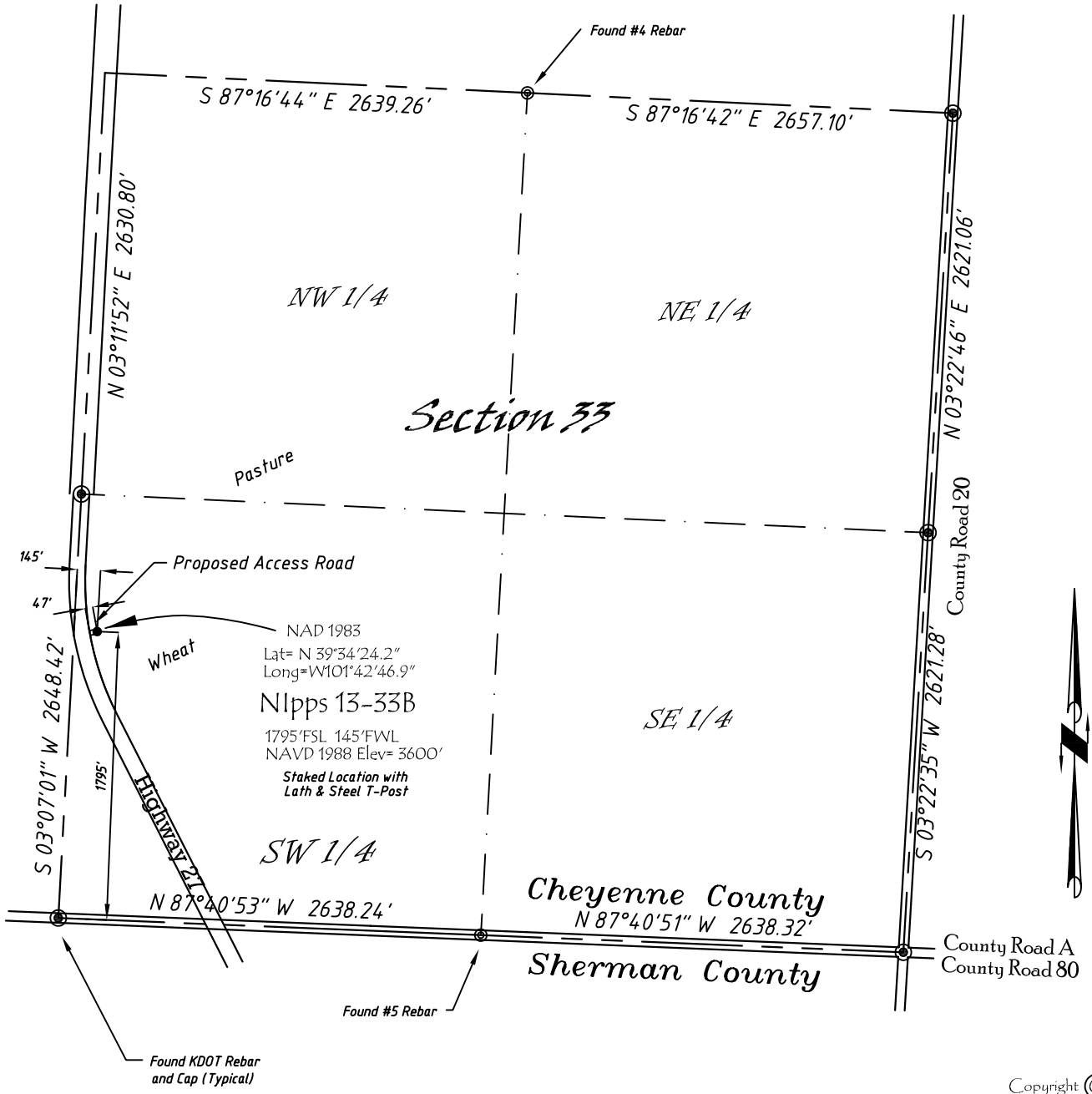


Well Location Map

Nipps 13-33B

NW 1/4, SW 1/4, Section 33, T5S, R39W, 6th P.M. Cheyenne County, Kansas
 1795' FSL - 145' FWL Elev=3600'



Copyright © 2010

Directions:

From the Intersection of Hwy 27 & Hwy 36 @ Wheeler, KS, Go S on Hwy 27
 Approximately 12.6 miles, then E 200' to Staked location.

This Drawing is for Construction Purposes Only

Noble Energy, Inc.		
DRAWN GP	DATE 12/17/10	Section 33
FB B73 P78	EQ HjPro	T5S, R39W, 6th P.M. Cheyenne County, KS
SCALE 1"=1000'	SHEET 1 of 1	PROJECT NO. 1570.180

North
Winds
Surveys, Inc.

402 Walnut
Kanorado, KS
785/399/2551