



Woolsey Operating Company, LLC

Scale 1:240 (5"=100') Imperial

Measured Depth Log

Well Name: Diel #D 3

Location: NW SE SE NE

License Number: API: 15-007-23597-00-00

Spud Date: September 27, 2010

Region: Barber County, Kansas

Drilling Completed: October 7, 2010

Surface Coordinates: 2100' FNL, 365' FEL Section 16-Twp 34 South - Rge 11 West
Field Schupach Southwest

Bottom Hole Coordinates: Vertical Hole

Ground Elevation (ft): 1331'

K.B. Elevation (ft): 1340'

Logged Interval (ft): 3600 To: 5190 Total Depth (ft): 5190

Formation: McLish Sand

Type of Drilling Fluid: Chemical Mud, Displace at 3400'

Printed by WellSight Log Viewer from WellSight Systems 1-800-447-1534 www.WellSight.com

OPERATOR

Company: Woolsey Operating Company, LLC

Address: 125 N. Market, Suite 1000
Wichita, KS 67202

GEOLOGIST

Name: W. Scott Alberg

Company: Alberg Petroleum, LLC

Address: 609 Meadowlark Lane
Pratt, Kansas 67124

FORMATION TOPS

	SAMPLE TOPS	LOG TOPS
HUSHPUCKNEY SHALE	4327 (-2987)	4334 (-2994)
B/KC	4378 (-3038)	4384 (-3044)
PAWNEE	4470 (-3130)	4481 (-3141)
CHEROKEE GROUP	4522 (-3182)	4528 (-3188)
CHEROKEE SAND	4549 (-3209)	4555 (-3215)
MISSISSIPPIAN	4564 (-3224)	4570 (-3230)
COWLEY C2 A	4575 (-4335)	4588 (-3248)
COMPTON LIMESTONE	4754 (-3414)	4762 (-3422)
KINDERHOOK SHALE	4762 (-3422)	4769 (-3429)
WOODFORD SHALE	4845 (-3505)	4854 (-3514)
MAQUOKETA	4872 (-3532)	4882 (-3542)
VIOLA	4900 (-3570)	4909 (-3579)
SIMPSON GROUP	4992 (-3652)	5000 (-3660)
SIMPSON WILCOX	5011 (-3671)	5018 (-3688)
MCLISH SHALE	5062 (-3722)	5073 (-3733)
MCLISH SAND	5152 (-3812)	5259 (-3819)
RTD	5190 (-3850)	
LTD		5200 (-3860)

Sample tops are approximately 7 to 10' shallow to log tops. LTD was 10' deeper than RTD.

COMMENTS

Surface Casing: Set 6 joints 10 3/4" at 242' (tally 230') with 230 sxs Class A, 2% gel, 3% cc, plug down at 5:00 am on September 28, 2010. Cement did Circulate.

Production Casing: Run 5 1/2 Casing

Deviation Surveys: 246' 3/4, 773' 1, 1313' 1, 1854' 1, 2329' 1, 2836' 1, 3343' missrun, 3343' 1/2, 3343 3/4, 3852' 1 1/4, 4392' 1 3/4, 4555 1 1/4, 5190 3/4

Contractor Bit Record: 1- 14 3/4" out at 246'
2- 7 7/8" out at 5190'.

Gas Detector: Woolsey Operating Company, Trailer #2

Mud System: Mud Co, Brad Bortz, Engineer

DSTs: No DST's ran.

CREWS

H2 Drilling Rig #3





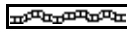

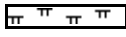

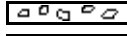



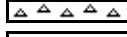










Tool Pusher - James Schultz

Drillers - Mark Staats

Gary Axtell

Cesar Regalado

ROCK TYPES

 Anhy	 Congl	 Lmst	 Black sh
 Bent	 Sdy dolo	 Mrlst	 Gry sh
 Brec	 Shy dolo	 Salt	 Shale
 Cht	 Dol	 Shale	 Shyslst
 Clyst	 Gyp	 Sltst	 Sltys
 Coal	 Sdy lmst	 Ss	

ACCESSORIES

MINERAL

- Anhy
- Arg
- Bent
- Bit
- Brecfrag
- Calc
- Carb
- Chtdk
- Chtl
- Dol
- Ferrpel
- Ferr
- Glau
- Gyp
- Marl
- Nodule
- Phos
- Pyr
- Salt
- Sandy
- Silt

- Chlorite
- Dol
- Sand
- Slty

FOSSIL

- Algae
- Amph
- Belm
- Bioclst
- Brach
- Bryozoa
- Cephal
- Coral
- Crin
- Echin
- Fish
- Foram
- Fossil
- Gastro
- Oolite
- Ostra

- Pelec
- Pellet
- Pisolite
- Plant
- Strom
- Fuss
- Oomoldic

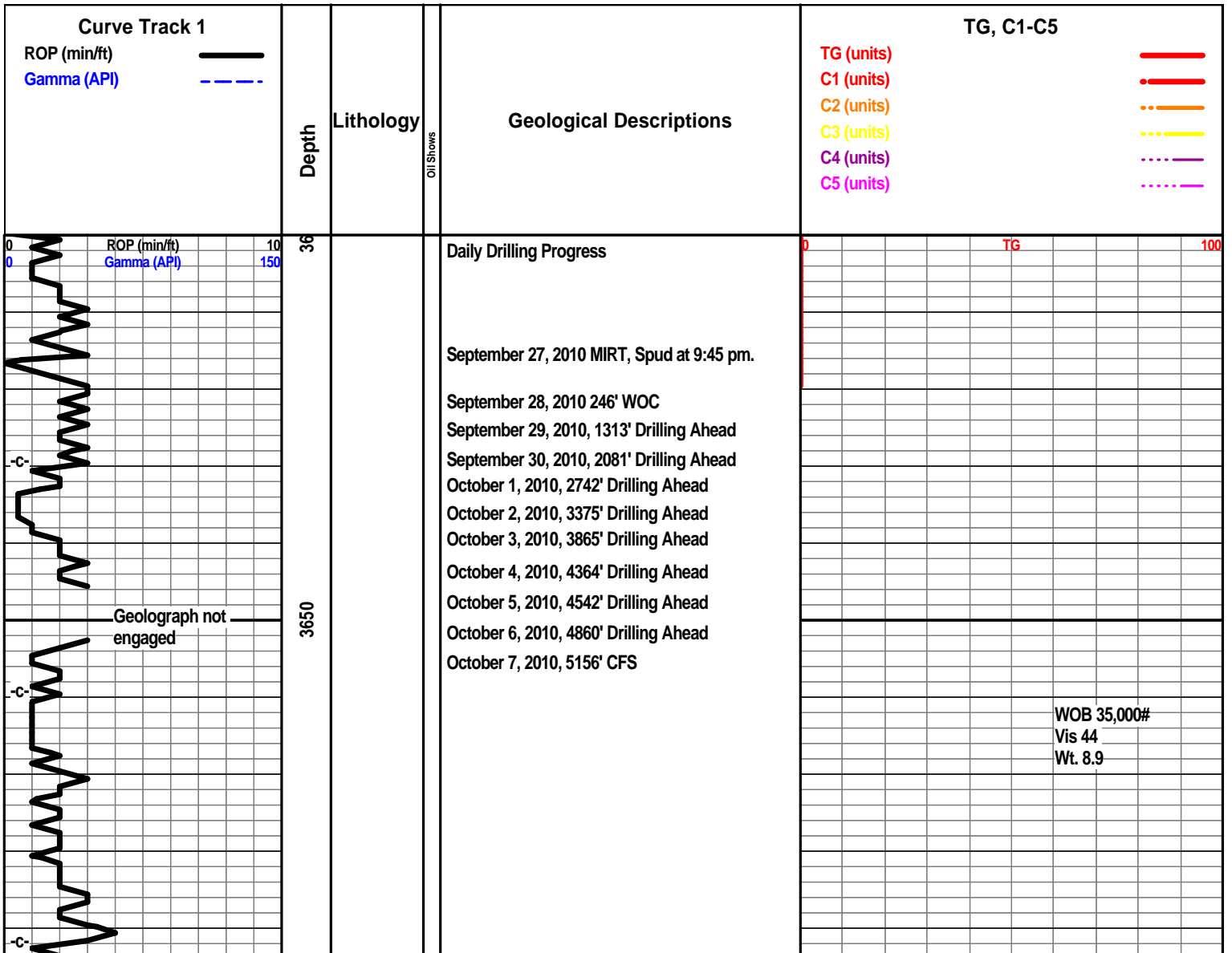
STRINGER

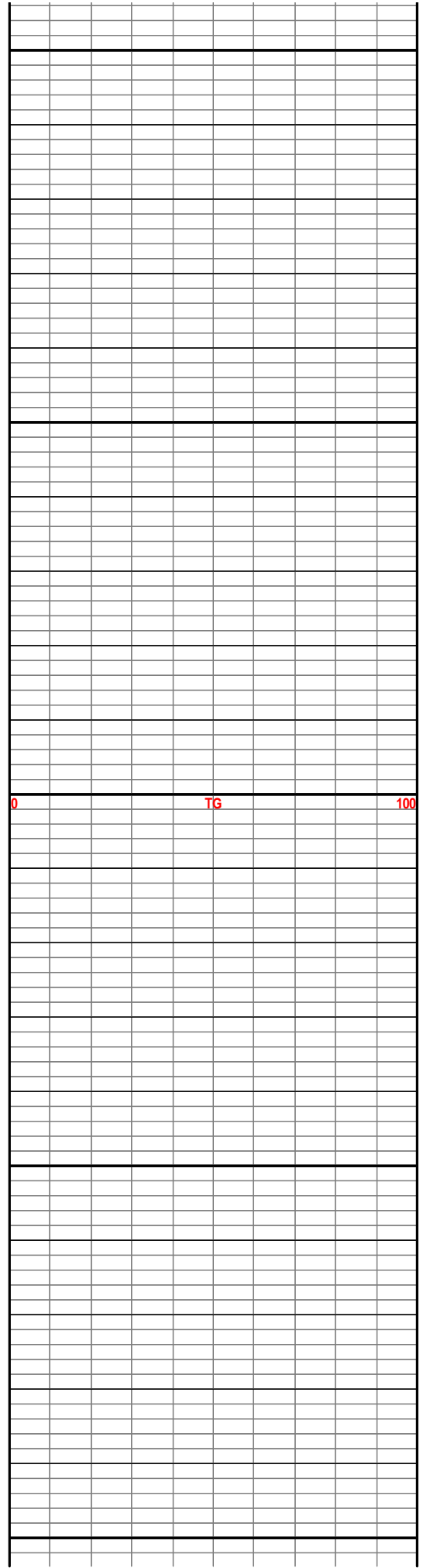
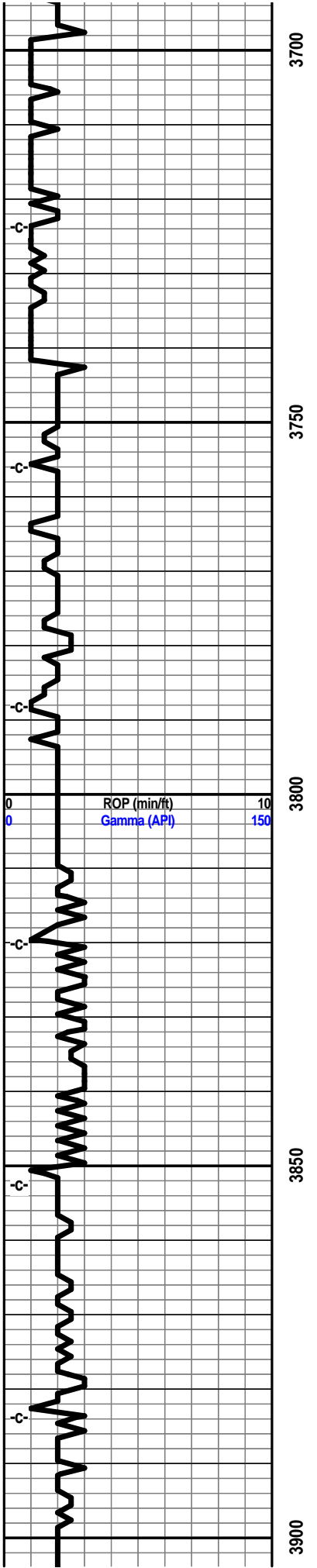
- Anhy
- Arg
- Bent
- Coal
- Dol
- Gyp
- Ls
- Mrst
- Slststrg
- Ssstrg
- Carbsh
- Clystn
- Dol

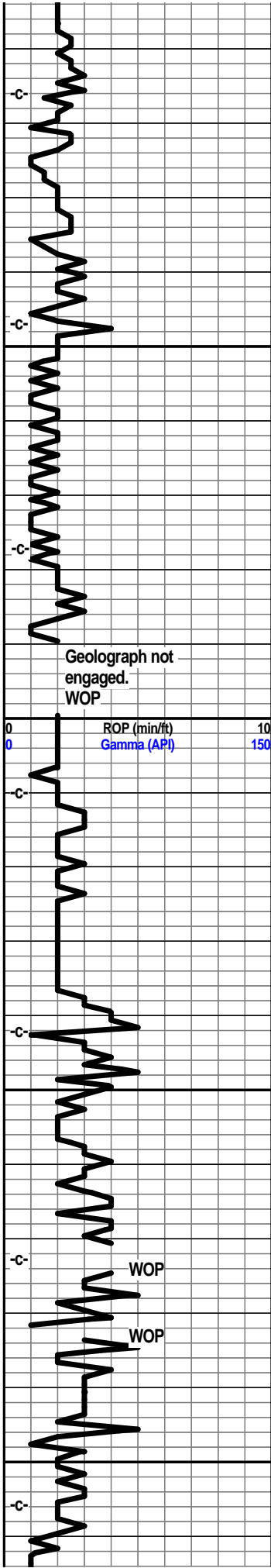
- Grysh
- Gryslt
- Lms
- Sandylms
- Sh
- Slststn

TEXTURE

- Boundst
- Chalky
- Cryxln
- Earthy
- Finexln
- Grainst
- Lithogr
- Microxln
- Mudst
- Packst
- Wackest





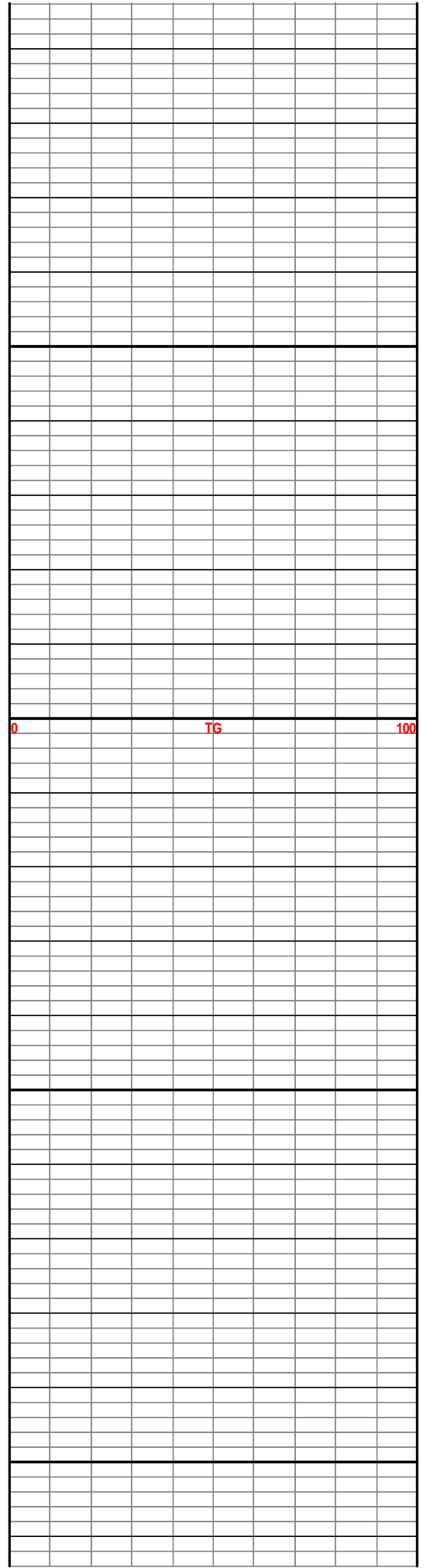


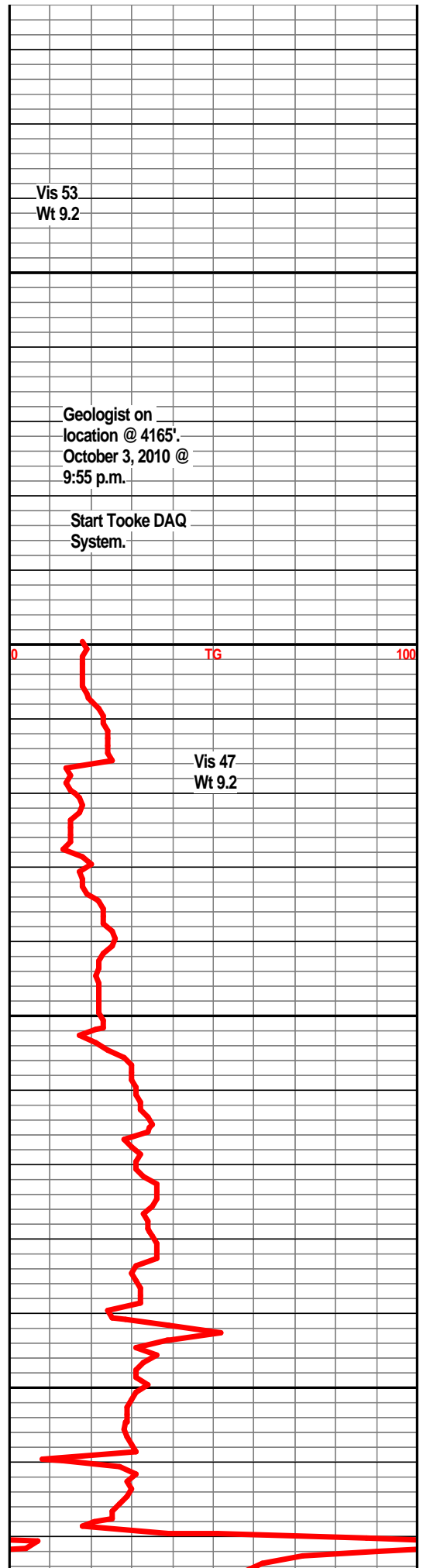
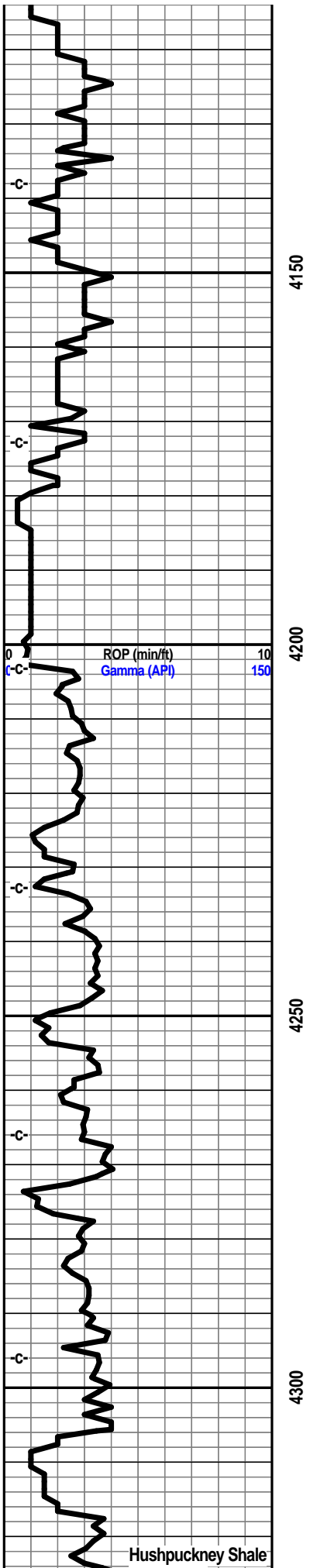
3950

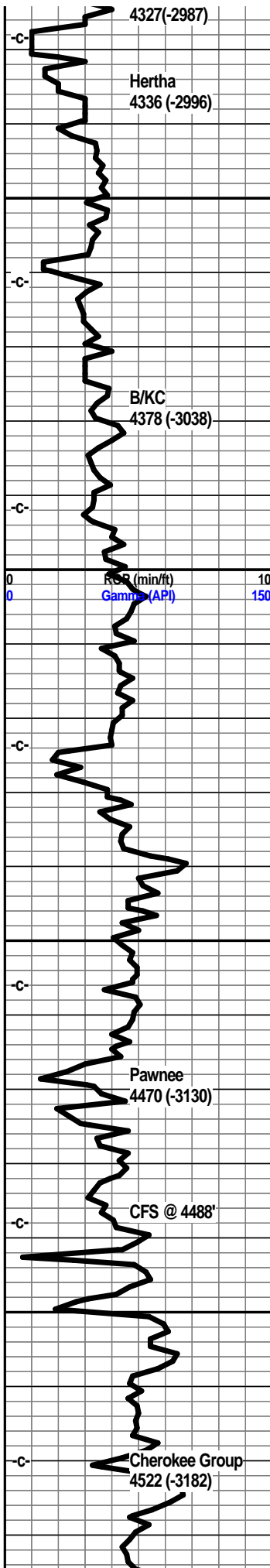
4000

4050

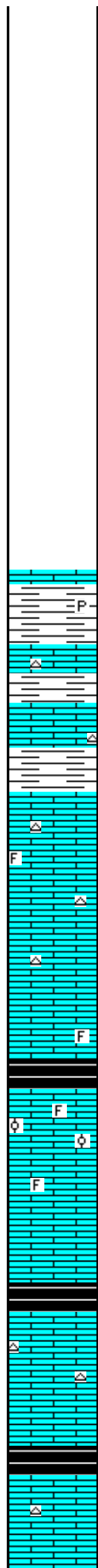
4100



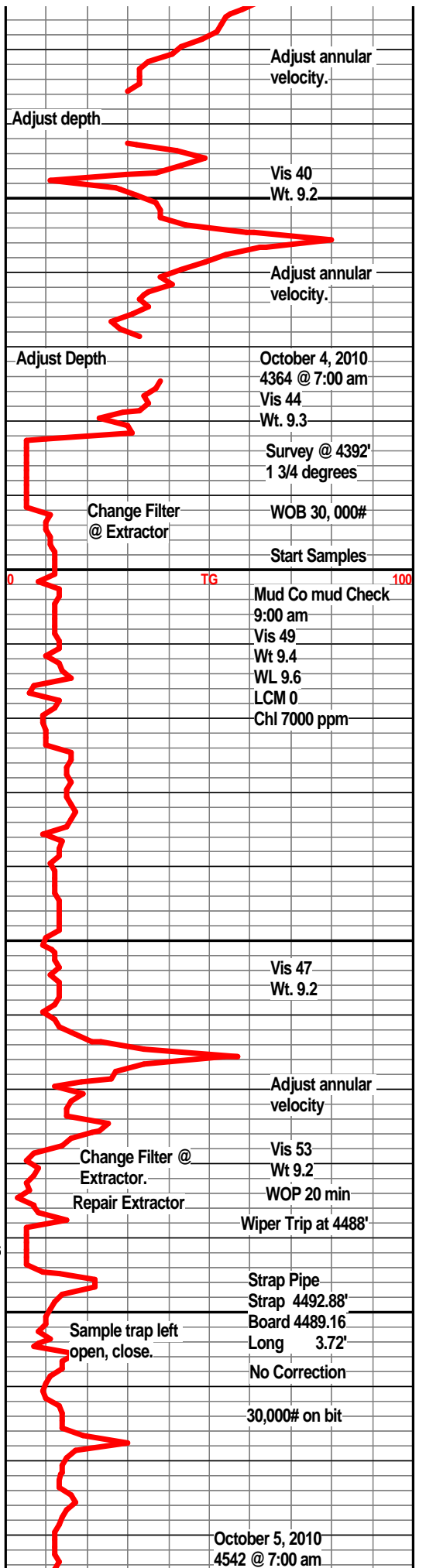


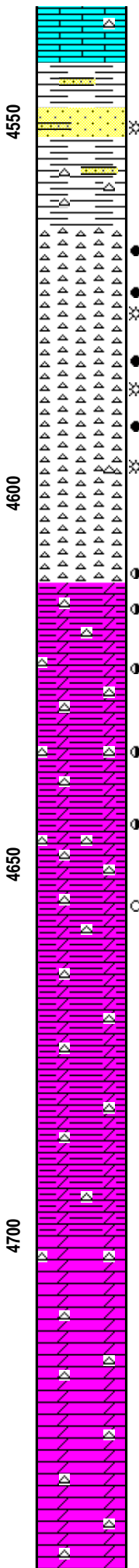
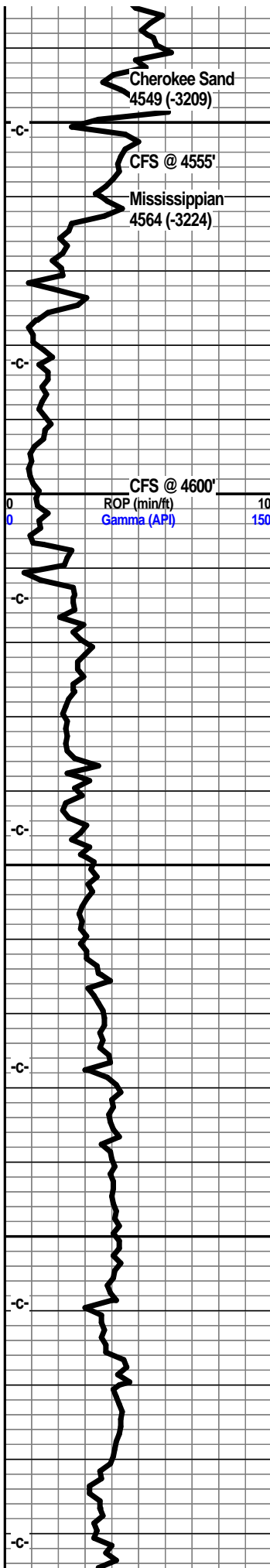


4350
4400
4450
4500



Limestone, tan, cream-white, fxln, dense, trace foss frags.
Shale, grey-green, trace pyrite.
Limestone, cream, green-white, fxln, dense, trace of chert.
Shale, lt grey-green.
Limestone, tan, tan-white, fxln traces of tan chert.
Shale, grey.
Limestone, cream-white to tan, fxln, slightly foss, dense, slightly chalky, traces of chert.
Limestone, cream-white to tan, fxln, dense, trace of foss frags, trace of tan chert.
Limestone, cream-white, fxln, dense, cherty in part.
Shale, grey-black, slightly carb, slight show of gas bubbles.
Limestone, cream-white to off-white, some tan, fxln, slightly chaky, oolitic in part, traces of foss frags, very faint show of gas bubbles, very poor show light oil, some mineral fluor, no odor.
Limestone, cream, tan-white, fxln, dense, trace of foss frags, some scattered xln porosity, traces of tan chert.
Shale, grey-black.
Limestone, cream, tan, fxln, sub chalky, slightly foss, cherty in part.
Shale, grey-black
Limestone, cream-white, fxln, subchalky, traces of scattered chert.





Shale, grey, few sst stringers.

Sst, grey, some light brown cluster, well cemented, v. fine grained, SA, silty, traces of dark staining, v. slight show of gas bubbles, no odor, no fluor, v few pieces friable.

Shale, grey-green, trace of chert.

Chert, white, off-white, sharp, fresh, slightly weathered in part, some light staining along edges, v. faint show of oil, very faint odor, dull fluor.

Chert, white to off-white, fresh, sharp, some translucent, weathered in part, few scattered vugs, light brown staining, some edge staining, dull fluor, slight show of oil.

Chert, white, off-white, some translucent, weatered, sharp, light brown staining, few scattered vugs, trace of free oil in tray, slight show gas bubbles, v faint odor.

Dolo, cream, tan, xln, cherty, fresh, sharp, slight light brown staining, trace show of oil, no odor, abundant grey, dk grey shales, firm, splintery.

Dolo, lt grey, cream-tan, xln, very cherty, weathered, light brown staining, some with pin point porosity, faint show of oil, no odor, shaley, grey, dk grey shales.

Dolo, grey, dk grey, some cherts with weathering, light staining, no odor, dark grey blk shales.

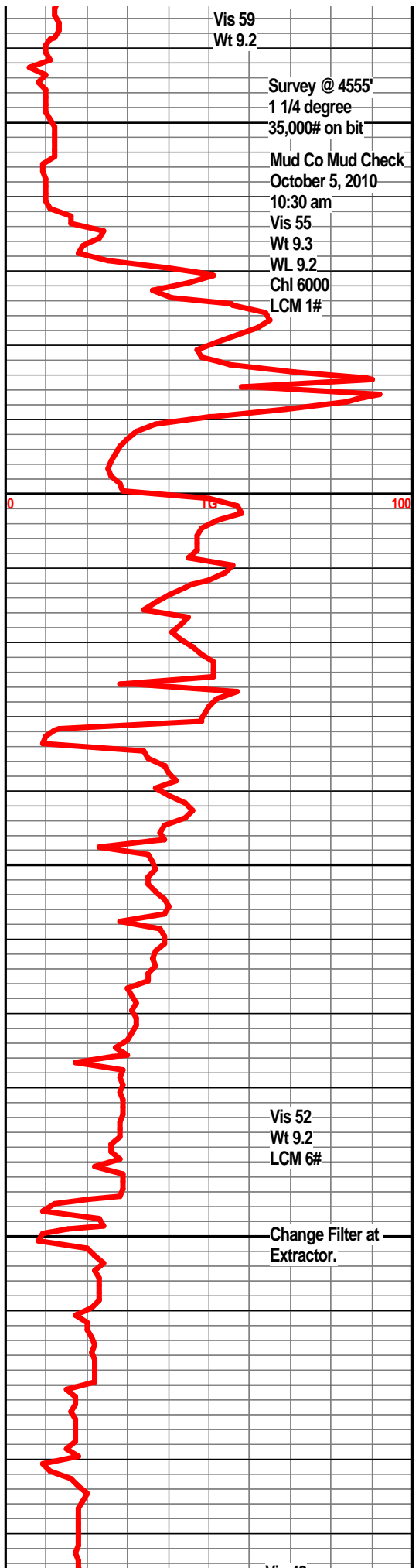
Dolo, cream to grey white, some darker grey, xln, cherty, sharp, weathered, light brown staining, decreasing amounts of staining, grey to dk grey shales.

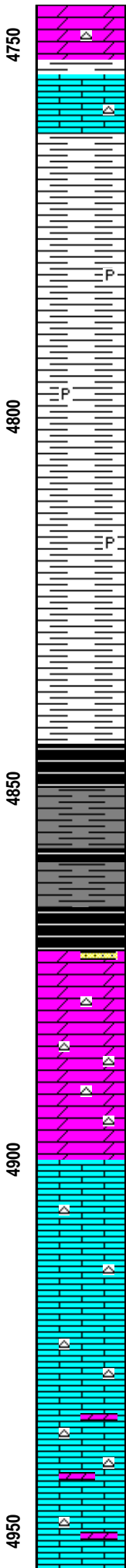
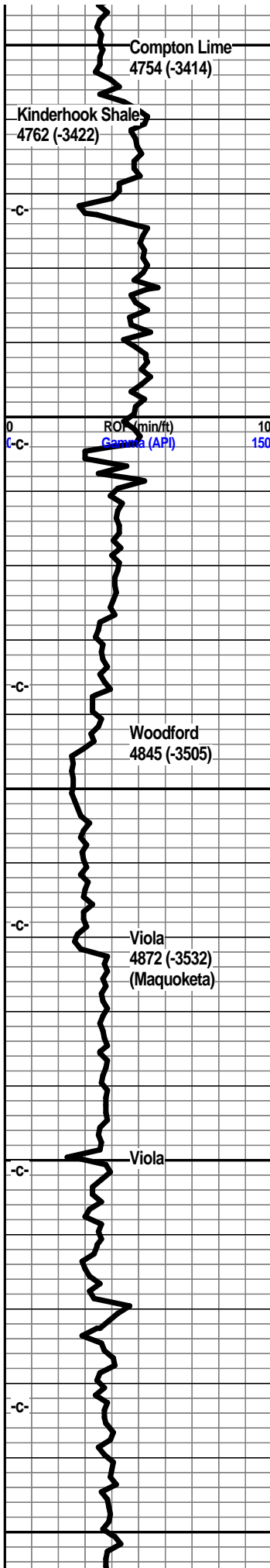
Dolo, grey-white, xln, cherty, fresh, sharp, some weathered, light staining, dk grey to grey shales.

Dolo, grey to cream, xln, cherty in part, grey to dk grey shales.

Dolo, lt grey to grey, some cream, xln, cherty, slightly shaley in part.

Dolo, grey, light grey, xln, cherty, traces of lt





grey shale.

Limestone, cream-white, fxl, foss fragments, slightly cherty.

Shale, dk grey, grey, silty, firm.

Shale, dk grey to grey, trace pyrite.

Shale, dk grey to grey.

Shale, grey, lt grey, silty.

Shale, grey, coffee brown, trace pyrite.

Shale, grey-black, brown, carb in part.

Shale, grey, dk grey, sl. carb

Shale, dk grey-black, coffee brown, show of bleeding gas.

Dolo, light grey to off-white, xln, silty, arg, trace of chert, slight trace of sst, tite clusters, SA, no visible shows, silty.

Dolo, grey, light grey, xln, silty, arg, trace of chert.

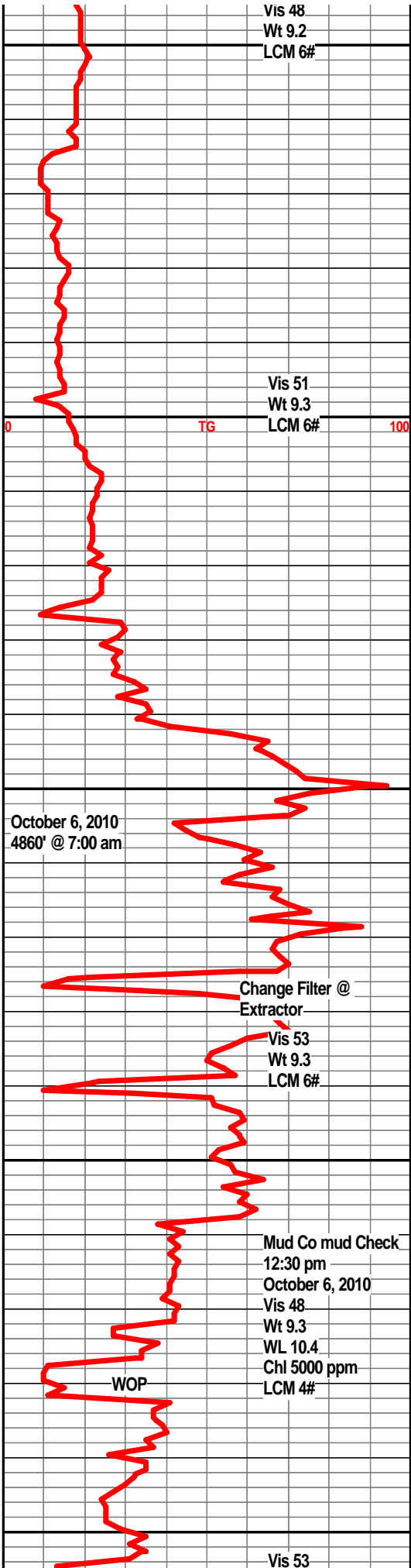
Limestone, white to off-white, xln, subchalky, trace foss frags, cherty.

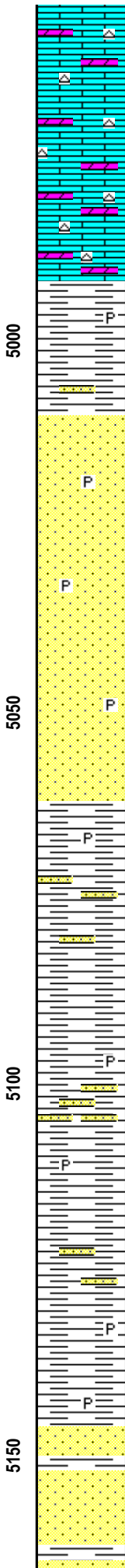
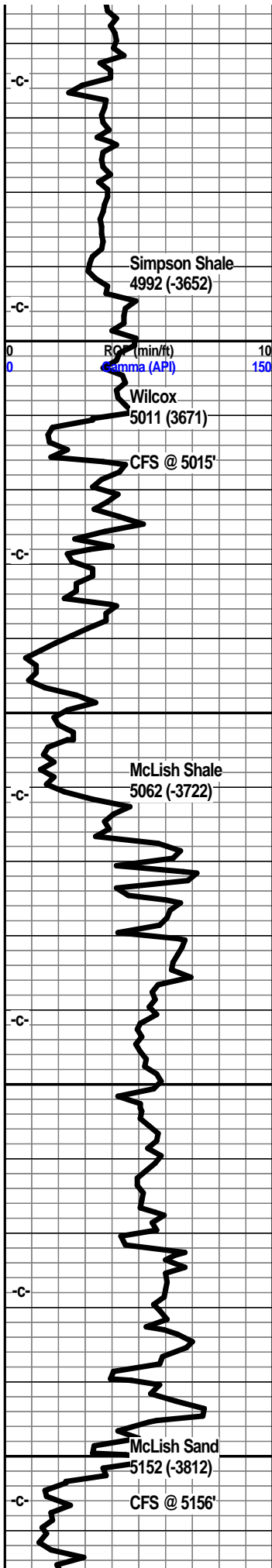
Limestone, white, off-white some tan, xln, chert in part, some chaky ls.

Limestone, tan, tan-brown, xln, dense, traces of tan-brown cherts, sharp.

Limestone, tan, slightly dolo, xln, cherty.

Limestone, tan, off-white, dolo, cherty, xln.





Limestone, tan, tan-white, xln, dolo, cherty.

Limestone, tan, tan-white, xln, cherty, traces of pyrite.

Shale, pale green to apple green, firm, waxey, traces of pyrite.

Shale a/a, traces of tite sand clusters.

Sst, clear to grey-white, SR to SA quartz grains, upper portion very well cemented becoming more friable with depth, slight show few oil droplets, some pyrite, no odor, no fluor., possible 3-4 unit increase in gas background.

Sst, clear to light grey frosted qtz grains, SA to SR, friable in part, some very well cemented, tite, glauc, some mica, traces of pyrite, some small shale inclusions, no odor, no fluor., some possible very light staining.

Sst, a/a, friable, SR fair sorting, no visible shows.

Shale, green, pale green, waxey.

Shale, green, apple green, firm, embedded sand grains, some sand stringers.

Shale, grey-green, firm, traces of pyrite, some sand inclusions.

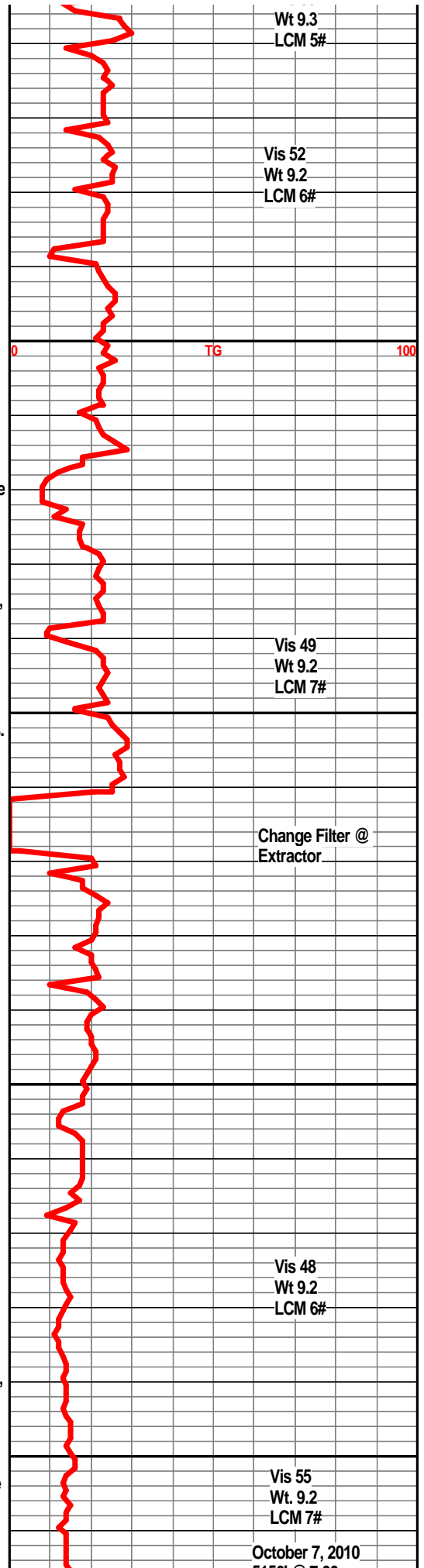
Shale, grey-green, firm, pyritic in part, scattered sand stringers.

Shale a/a

Shale, green, firm, waxey, some sand inclusions, trace pyrite.

Sst, grey to light grey-white, tite, dirty, well cemented, glauc, traces of pyrite.

Sst, clear to white frosted, SR, fair sorting, some glauc, friable in part, no visible shows, no odor, traces of pyrite.



Wt 9.3
LCM 5#

Vis 52
Wt 9.2
LCM 6#

Vis 49
Wt 9.2
LCM 7#

Change Filter @
Extractor.

Vis 48
Wt 9.2
LCM 6#

Vis 55
Wt 9.2
LCM 7#

Sst., clear to white, some lt grey frosted, well cemented, glauc., traces of pyrite, some interbedded shales.

Sst. clear to white, some light brown clusters, well cemented, fair sorting, friable in part, glauc, pyrite. no odor. no fluor.

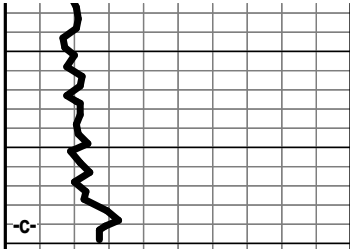
Shale, green, dk green.

5156' @ 7:00 am

Mud Co Mud Check
October 7, 2010
11:00 am
Vis 48
Wt 9.3
WL 9.2
Chl 4000 ppm
LCM 6#

Survey @ 5190 3/4 degree.

RTD at 9:15 am
October 7, 2010



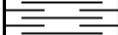
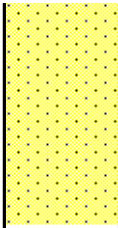
RTD 5190'
LTD 5200'

ROP (min/ft) 10
Gamma (API) 150

5200

5250

00



TG 100