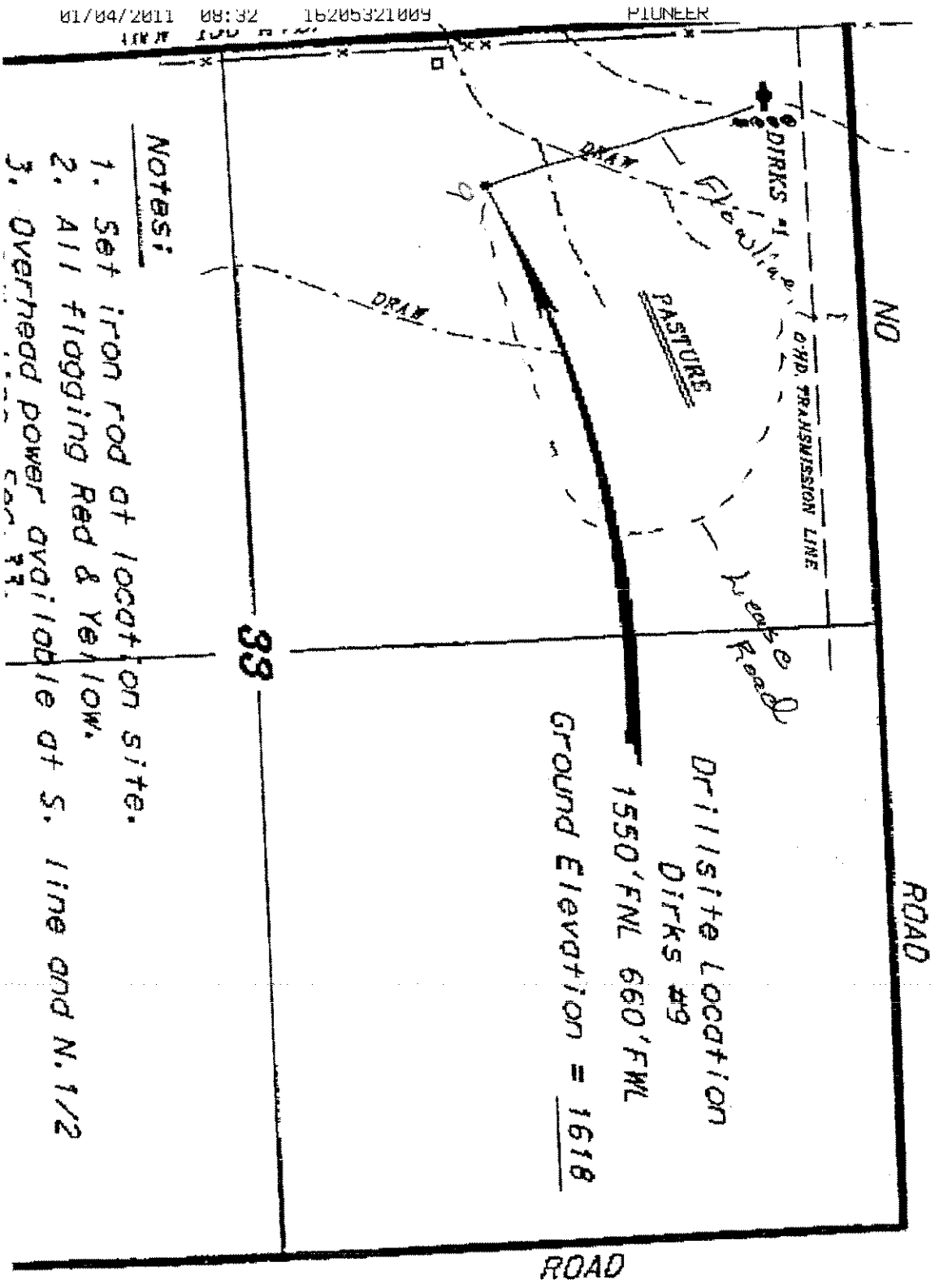


CENTRAL KS SURVEYING

ATLAS OPERATING, LLC
DIRKS LEASE
NW. 1/4, SECTION 33, T31S, R9W
HARPER COUNTY, KANSAS



Notes:

1. Set iron rod at location site.
2. All flagging Red & Yellow.
3. Overhead power available at S. line and N. 1/2

11/04/2011 08:32 16205321009 PIONEER