



Woolsey Operating Company, LLC
Scale 1:240 (5'=100') Imperial
Measured Depth Log

Well Name: Miller #4
Location: S/2 NW NW NW
License Number: API: 15-007-23603-00-00
Spud Date: October 9, 2010
Surface Coordinates: 495' FNL, 330' FWL Section 31-Twp 34 South - Rge 11 West
Bottom Hole Coordinates: Vertical Hole

Ground Elevation (ft): 1393
Logged Interval (ft): 3500
Formation: McLish Sand
Type of Drilling Fluid: Chemical Mud, Displace at 3400'

K.B. Elevation (ft): 1402
Total Depth (ft): 5395

Printed by WellSight Log Viewer from WellSight Systems 1-800-447-1534 www.WellSight.co

OPERATOR

Company: Woolsey Operating Company,LLC
Address: 125 N. Market, Suite 1000
Wichita, KS 67202

GEOLOGIST

Name: W. Scott Alberg
Company: Alberg Petroleum, LLC
Address: 609 Meadowlark Lane
Pratt, Kansas 67124

FORMATION TOPS

	SAMPLE TOPS	LOG TOPS
HUSHPUCKNEY SHALE	4488(-3086)	4489(-3087)
B/KC	4540(-3138)	4538(-3136)
PAWNEE	4632(-3230)	4636(-3234)
CHEROKEE GROUP	4674(-3272)	4683(-3281)
MISSISSIPPIAN	4702(-3300)	4709(-3307)
COMPTON LIMESTONE	4714(-3312)	4720(-3318)
KINDERHOOK SHALE	4944(-3542)	4941(-3539)
WOODFORD SHALE	4955(-3553)	4957(-3555)
MISNER SAND	5033(-3631)	5035(-3633)
VIOLA	5058(-3656)	5063(-3661)
SIMPSON GROUP	5060(-3658)	5064(-3662)
SIMPSON WILCOX	5202(-3800)	5206(-3804)
MCCLISH SHALE	5230(-3828)	5232(-3830)
MCCLISH SAND	5278(-3876)	5275(-3873)
RTD	5352(-3950)	5358(-3956)
LTD	5395(-3993)	5399(-3997)

COMMENTS

Surface Casing: Set 6 joints 10 3/4" at ' 240' with 230 sxs Class A, 2% gel, 3% cc, plug down at 4:45 am on October 10, 2010. Cement did Circulate.
Production Casing: Ran 4 1/2" casing
Deviation Surveys:240' 1 1/4, 1061 1, 1602 3/4, 2110 3/4, 2649 1, 2391 1/2, 3701 1, 4208 1/2, 4653 1/2, 5395 1 1/2
Contractor Bit Record: 1- 14 3/4" out at 240'.
2- 7 7/8" out at 5395'.

Gas Detector: Woolsey Operating Company, Trailer #2
Mud System: Mud Co, Brad Bortz, Engineer
DSTs: One DST by Trilobite Testing, See Results Below.

DSTs

DST #1 4648 to 4780, 30-60-60-120, 1st opening Strong Blow BOB 1 minute, no blow back, 2nd opening Strong Blow BOB immediately, GTS 10 minutes into opening TSTM, no blow back.

Recovery: 190' Drilling Mud, no shows. (Very Slight Show gas)

IHP 2299# FHP 2204#

IFP 56-65# FFP 61 to 68 #

ISIP 1677# FSIP 1673#

Temp 127

CREWS

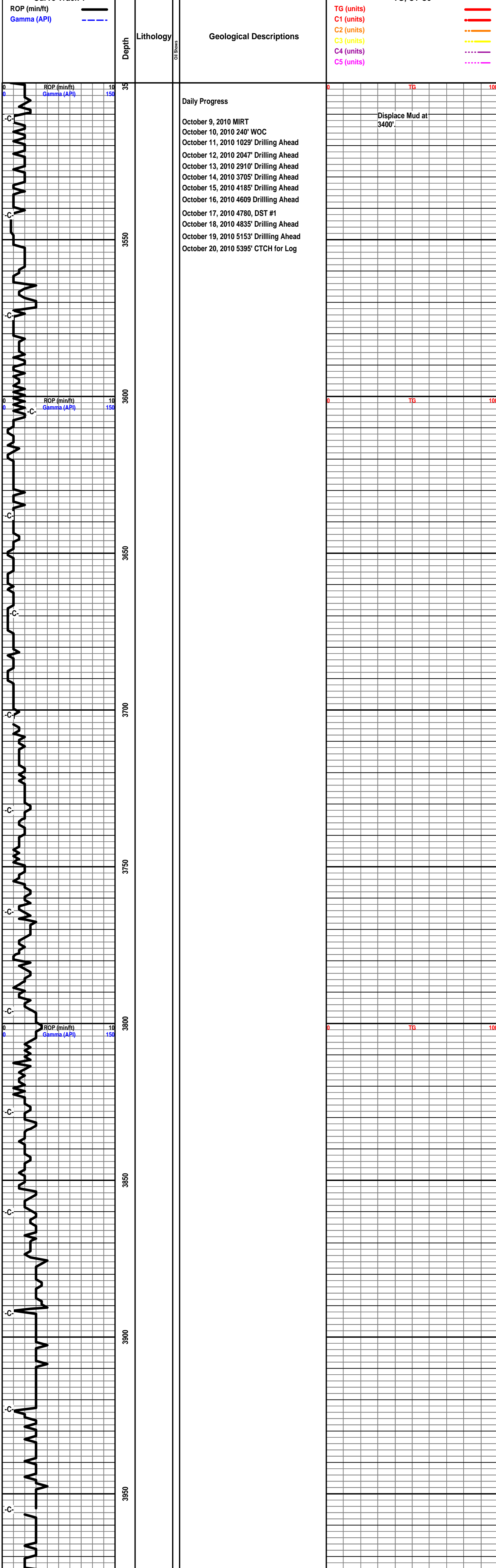
H2 Drilling Rig #3
Tool Pusher - Randy Smith
Drillers - Mark Staats
Gary Axtell
Cesar Regalado

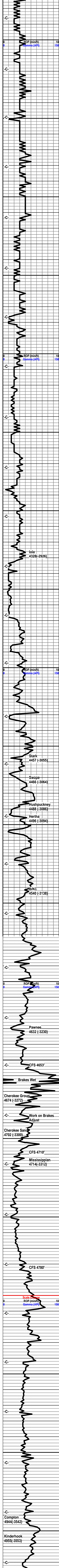
ROCK TYPES

Anhy	Congl	Lmst	Black sh
Bent	Sdy dolo	Mrlst	Gry sh
Brec	Shy dolo	Salt	Shale
Cht	Dol	Shale	Shysltst
Clyst	Gyp	Siltst	Sitysh
Coal	Sdy lmst	Ss	

ACCESSORIES

MINERAL	Chlorite	Pelec	Grysh
Arg	Dol	Pellet	Gryslt
Bent	Sand	Pisolite	Lms
Bit	Silty	Plant	Sandylms
Brecfrag	FOSSIL	Strom	Sh
Calc	Algae	Fuss	Siltstn
Carb	Amph	Oomoldic	TEXTURE
Chtdk	Belm	Anhy	Boundst
Chtlt	Bioclst	Arg	Chalky
Dol	Brach	Bent	Cryxln
Ferrpel	Bryozoa	Coal	Earthy
Ferr	Cephal	Dol	Finexln
Glau	Coral	Gyp	Grainst
Gyp	Crin	Ls	Lithogr
Marl	Echin	Mrst	Microxln
Nodule	Fish	Sltstrg	Mudst
Phos	Foram	Ssstrg	Packst
Pyr	Fossil	Carbsh	Wackst
Salt	Gastro	Clystn	
Sandy	Oolite	Dol	
Silt	Ostra		





Geologist Called out at 4200' October 15, 2010, 8:30 am

Geologist on Location at 4310' 11:45 am October 15, 2010

Vis 45 Wt 9.3

Vis 48 Wt 9.3 WOP

Vis 58 Wt 9.3

Start Samples

WOB 30,000#

Change Filter @ 100 Extractor

October 16, 2010 4609' @ 7:00 am Drilling Ahead

Vis 53 Wt 9.3

CFS 4653' Wiper Trip Check Strap Out Board 4653.95' Strap .50 long No Correction Survey 1/2 degree

Vis 47 Wt 9.2 WL 9.6 Chl 5000 ppm pH 10.5 LCM 0

Wet Brakes after trip. 20,000# on bit

Change Filter

Work on Brakes

Vis 60 Wt 9.4 30,000# on bit

CFS 4710'

Mud Co Mud Check October 17, 2010 9:30 am Vis 49 Wt 9.2 WL 9.2 Chl 5000 pH 10.0 LCM trace

DST #1 See Results in Header

Vis 53 Wt 9.3+

October 17, 2010 4780' @ 7:00 am CFS

Change Filter @ Extractor

Trip Gas

Scale Change TG

Vis 54 Wt. 9.2 LCM 3#

October 18, 2010 4835 @ 7:00 am Drilling Ahead

MUD CO MUD CHECK 10:10 am October 18, 2010 Vis 52 Wt 9.2 WL 10.0 Chl 6000 pH 10 LCM 4#

Vis 53 Wt 9.2 LCM 8#

Change Filter @ Extractor

