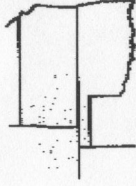




Pro-Stake LLC

Oil Field & Construction Site Staking
P.O. Box 2324
Garden City, Kansas 67846
Office/Fax: (620) 276-6159
Cell: (620) 272-1499



g020911-a
FLAT NO.

9197
INVOICE NO.

American Warrior Inc.

OPERATOR

Hodgeman County, KS

COUNTY

Schlegel # 1-34

LEASE NAME
1857' FNL - 1542' FWL
LOCATION SPOT

34 22s 23w
Sec. Twp. Rng.

SCALE: 1" = 1000'

DATE STAKED: Feb. 8th, 2011

MEASURED BY: Luke R.

DRAWN BY: Luke R.

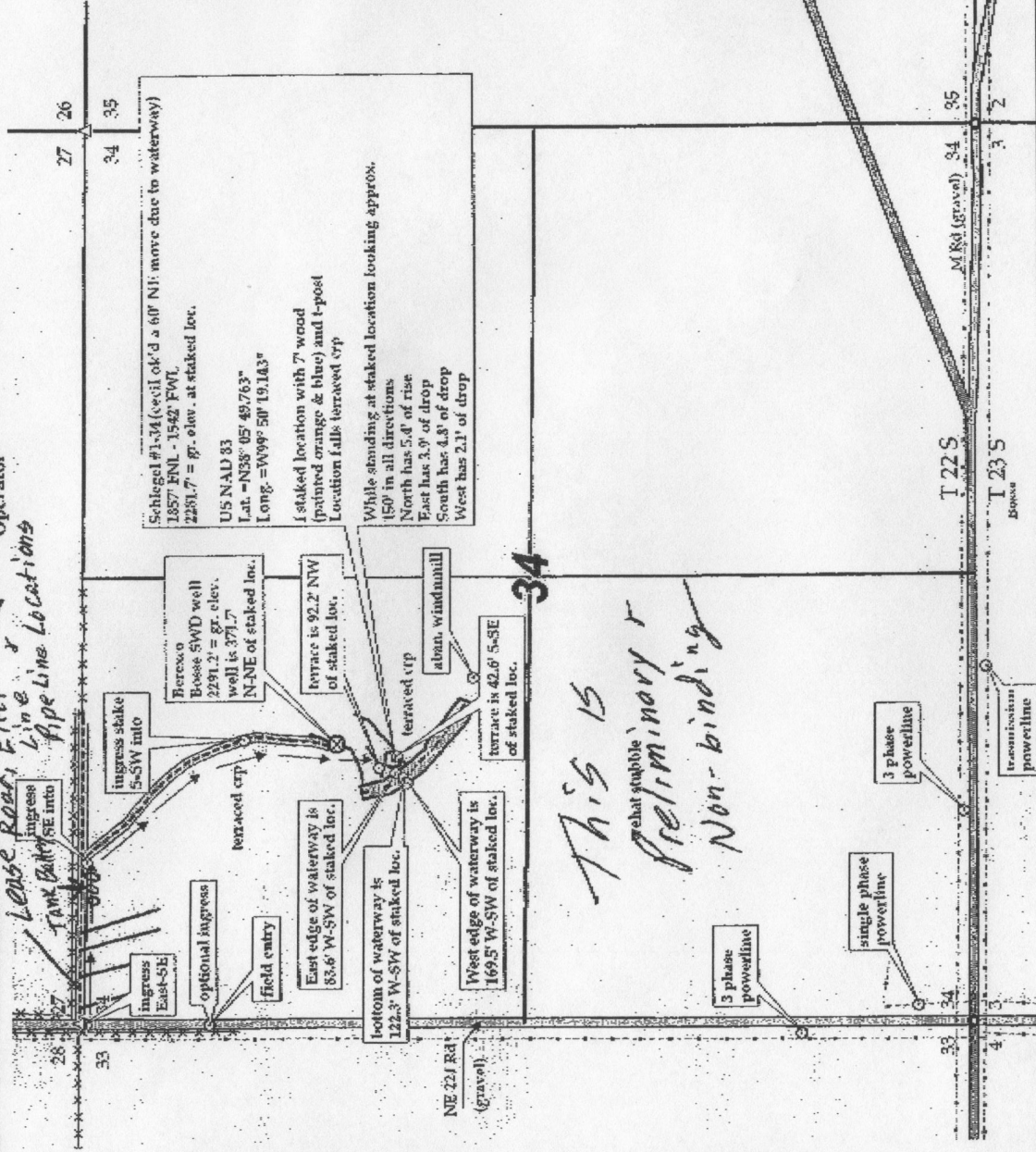
AUTHORIZED BY: Cecil O.

GR. ELEVATION: 2281.7'
PROSPECT

Directions: From the North side of Jetmore, Ks at the intersection of Hwy 156 & Hwy 283 - Now go 2.7 miles East on Hwy 156 to the SW corner of section 34-22s-23w - Now go 1 mile North on NE 221 Rd - Now go 0.2 mile East on dirt trail - Now go approx. 1210' SE on grass trail to ingress stake S-SW into well - Now go approx. 550' South on grass trail to Berexco SWD well - Now go 371.7' S-SW through terraced crp into staked location. Final ingress must be verified with land owner or Operator

*This drawing does not constitute a monumented survey or a land survey plat
This drawing is for construction purposes only*

Lease Rear, Electric Line & Pipe Line Locations



Schlegel #1-34 (well ok'd a 60' N1; move due to waterway)
1857' FNL - 1542' FWL
2281.7' = gr. elev. at staked loc.
US NAD 83
Lat. = N38° 05' 49.763"
Long. = W99° 50' 19.143"
1 staked location with 7' wood (painted orange & blue) and t-post
Location falls terraced crp
While standing at staked location looking approx. 150° in all directions
North has 5.4' of rise
East has 3.9' of drop
South has 4.3' of drop
West has 2.1' of drop