

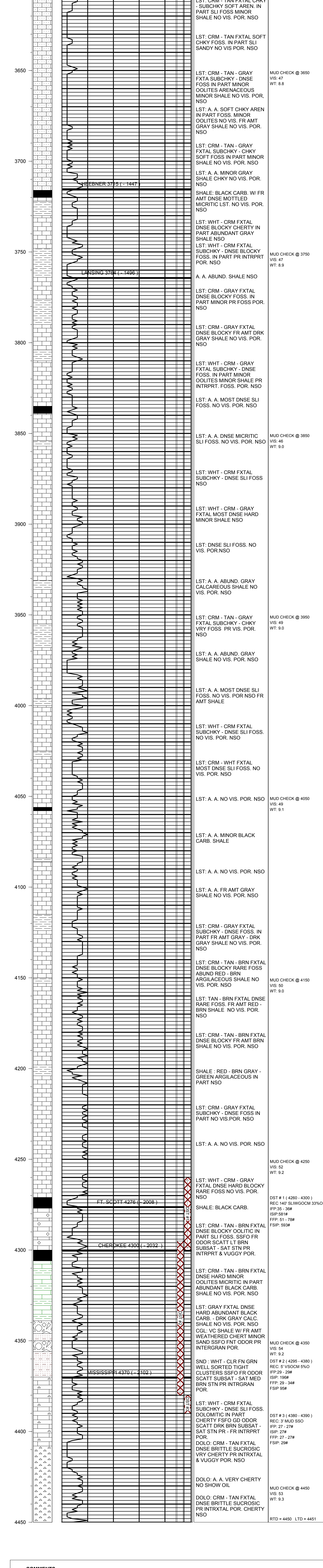
# KEVIN L. KESSLER

## CONSULTING PETROLEUM GEOLOGIST

( 316 ) 522-7338

<b>OPERATOR : MULL DRILLING CO. INC.</b> <b>LEASE : REINERT</b> <b>WELL # : 1 - 11</b> <b>LOCATION : 1617' FSL &amp; 1996' FWL</b> <b>SEC: 11</b> <b>TWP : 20 S</b> <b>RGE : 23 W</b> <b>COUNTY : NESS</b> <b>STATE : KANSAS</b>	<b>ELEVATION</b> <b>KB : 2268</b> <b>GL : 2259</b> <small>MEASUREMENTS FROM</small> <b>KB</b>
<b>CONTRACTOR : DUKE DRILLING RIG # 2</b> <small>COMM : 12 / 14 / 2010</small> <small>COMP : 12 / 22 / 2010</small> <small>RTD : 4450</small> <small>LOG TD : 4452</small> <small>SAMPLES SAVED FROM : 3600</small> <small>TO: RTD</small> <small>GEOLOGICAL SUPERVISION FROM : 3600</small> <small>TYPE MUD : CHEMICAL</small> <small>MUD UP : 3600</small>	<b>CASING RECORD</b> <b>SURFACE :</b> 8 5/8 @ 229' <b>PRODUCTION :</b> 4.5" @ 4450' <b>ELECTRICAL SURVEYS:</b> DIL CNL / CDL
<b>REFERENCE WELL FOR STRUCTURAL COMPARISON :</b>  <b>MULL DRILLING # 1 FOOS</b> <b>SEC. 11 - T 20 S - R 23 W</b> <b>NESS COUNTY KANSAS</b>	

FORMATION	TOP	LOG	DATUM	TOP	SAMPLE	DATUM	STRUCT. COMP.
HEEBNER	3715		- 1447	3715		- 1447	- 05
LANSING	3764		- 1496	3764		- 1496	- 04
STARK	.	.	.	.	.	.	.
BASE / KC	.	.	.	.	.	.	.
FT SCOTT	4276		- 2008	4276		- 2008	+ 02
CHEROKEE	4300		- 2032	4300		- 2032	FLAT
MISSISSIPPI	4370		- 2102	4370		- 2102	- 02



**COMMENTS:**

**4 1/2" PRODUCTION CASING WAS SET TO FURTHER EVALUATE THE PRODUCTIVITY OF THE FT SCOTT.**

**KEVIN L. KESSLER**