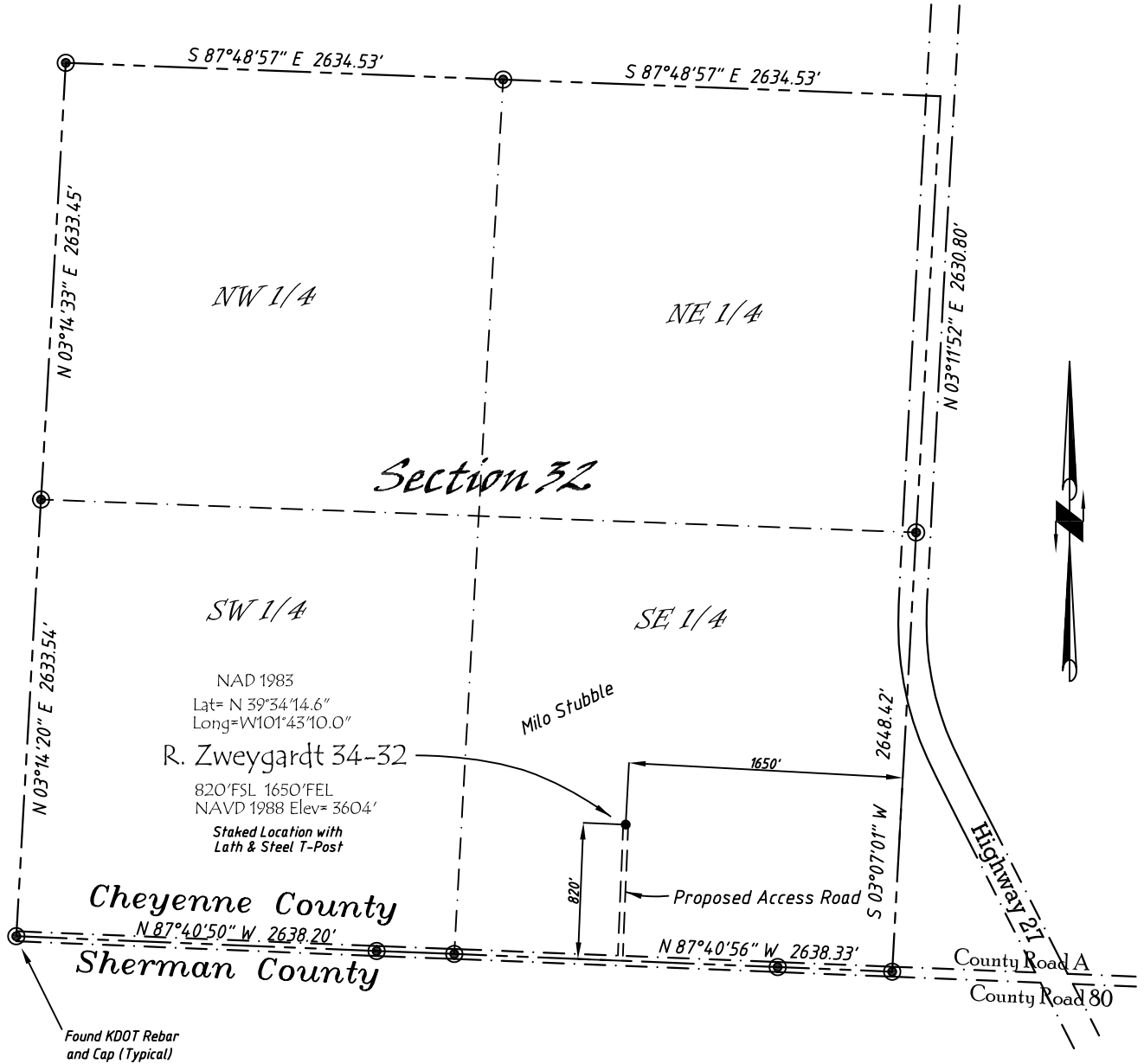


Well Location Map

R. Zweggardt 34-32

SW 1/4, SE 1/4, Section 32, T5S, R39W, 6th P.M. Cheyenne County, Kansas
 820' FSL - 1650' FEL Elev=3604'



Copyright © 2011

Directions:

From the Intersection of Hwy 27 & Hwy 36 @ Wheeler, KS, Go S on Hwy 27
 Approximately 13 miles, to County Road A, then go W 0.5 miles, then N
 820' to Staked location.

This Drawing is for Construction Purposes Only

Noble Energy, Inc.		
DRAWN GP	DATE 3/16/11	Section 32
FB B7+P49	EQ HijPro	T5S, R39W, 6th P.M. Cheyenne County, KS
SCALE 1"=1000'	SHEET 1 of 1	PROJECT NO. 1570.183

North
Winds
Surveys, Inc.

402 Walnut
Kanorado, KS
785/399/2551