

ADVANTAGE ELEVATIONS

OIL FIELD SURVEYORS

BOX 8604 - PRATT, KS 67124
(620) 672-6491

314112
INVOICE NO.

R & B OIL & GAS OPERATOR 2 NO. Saddler FARM

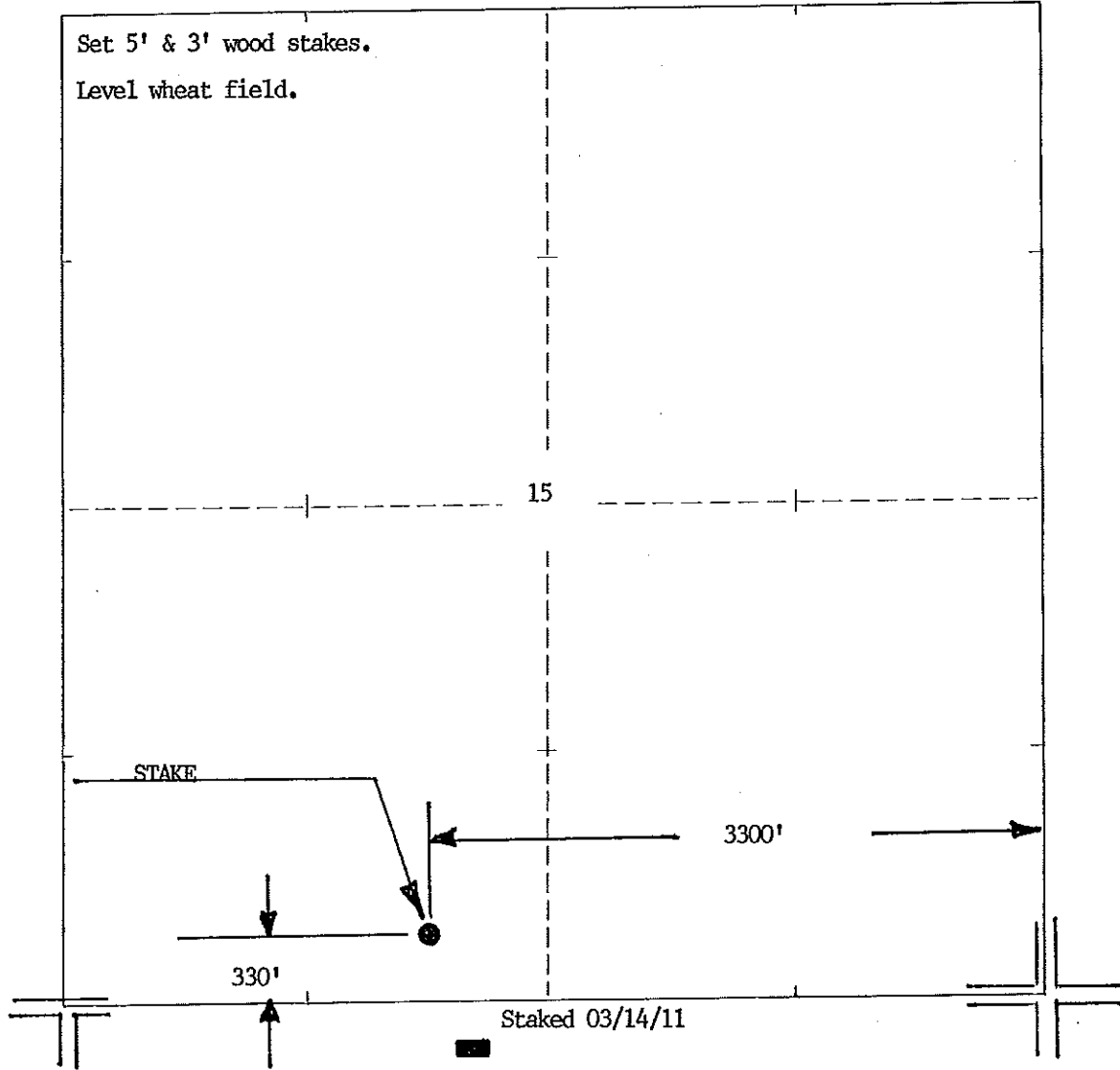
Barber COUNTY 15 S 32s T 10w R S/2 SE SW LOCATION

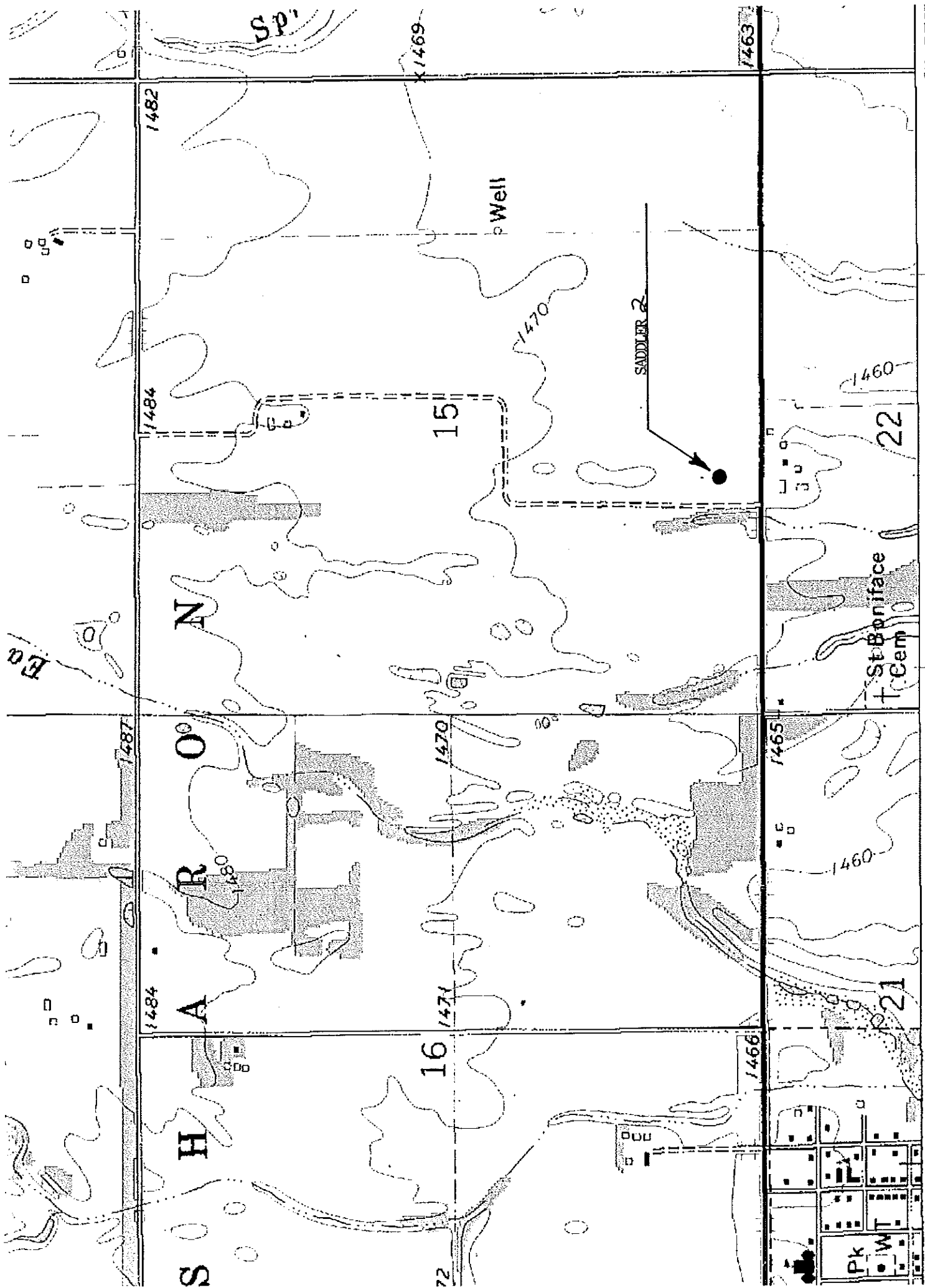
ELEVATION: 1462' gr

■
 R & B OIL & GAS
 PO Box 195
 Attica KS 67009-0195
 ■

AUTHORIZED BY: Randy Newberry

SCALE: 1" = 1000'





● INTERIOR—GEOLOGICAL SURVEY, REST

553

552

25'