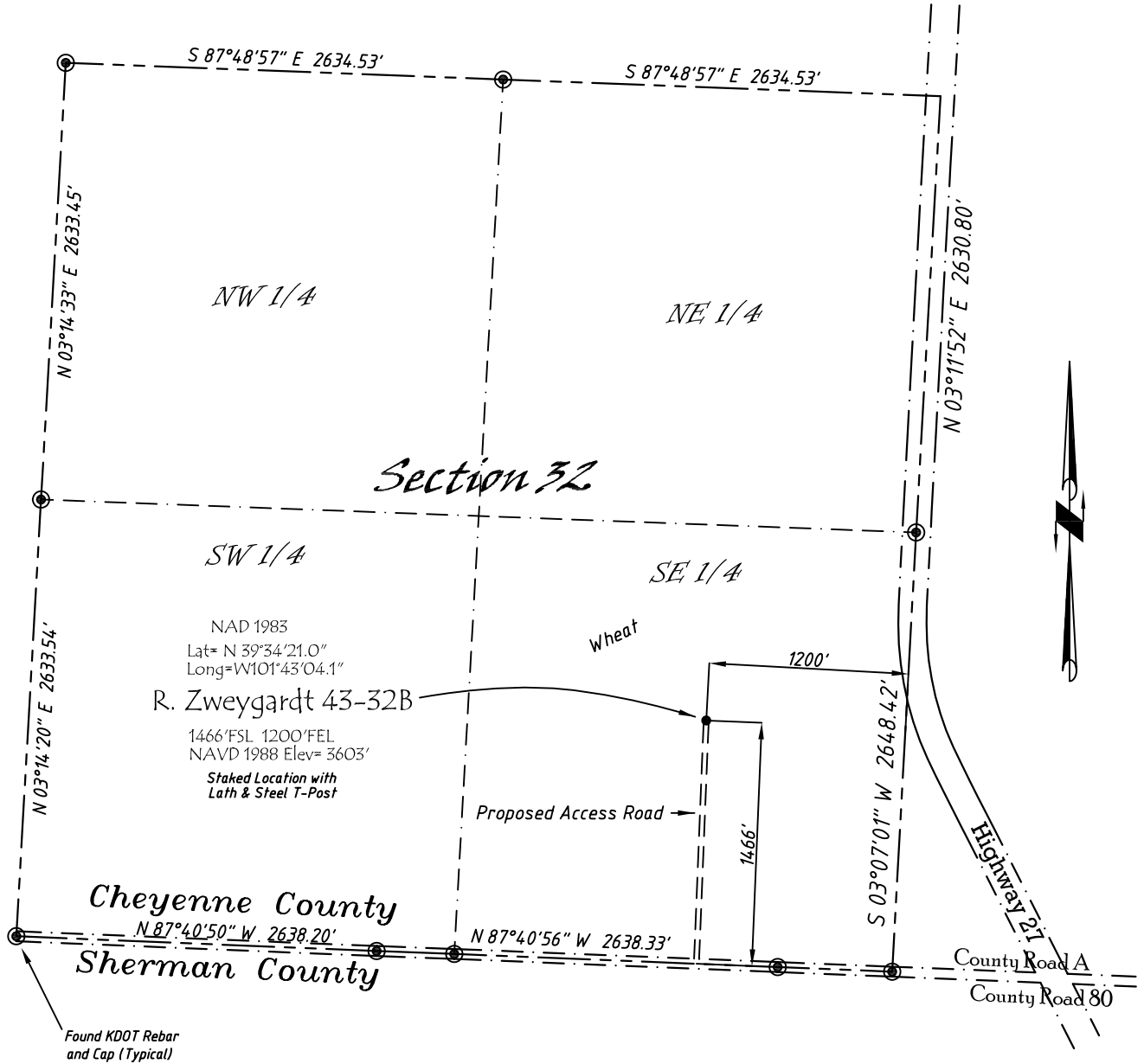


Well Location Map

# R. Zwegardt 43-32B

NE 1/4, SE 1/4, Section 32, T5S, R39W, 6th P.M. Cheyenne County, Kansas  
 1466' FSL - 1200' FEL Elev=3603'



Copyright © 2011

Directions:

From the Intersection of Hwy 27 & Hwy 36 @ Wheeler, KS, Go S on Hwy 27  
 Approximately 13 miles, to County Road A, then go W 0.4 miles, then N  
 1466' to Staked location.

*This Drawing is for Construction Purposes Only*

Noble Energy, Inc.		
<b>DRAWN</b> GP	<b>DATE</b> 3/16/11	Section 32
<b>FB</b> B7+P49	<b>EQ</b> HjPro	T5S, R39W, 6th P.M. Cheyenne County, KS
<b>SCALE</b> 1"=1000'	<b>SHEET</b> 1 of 1	<b>PROJECT NO.</b> 1570.185



402 Walnut  
 Kanorado, KS  
 785/399/2551