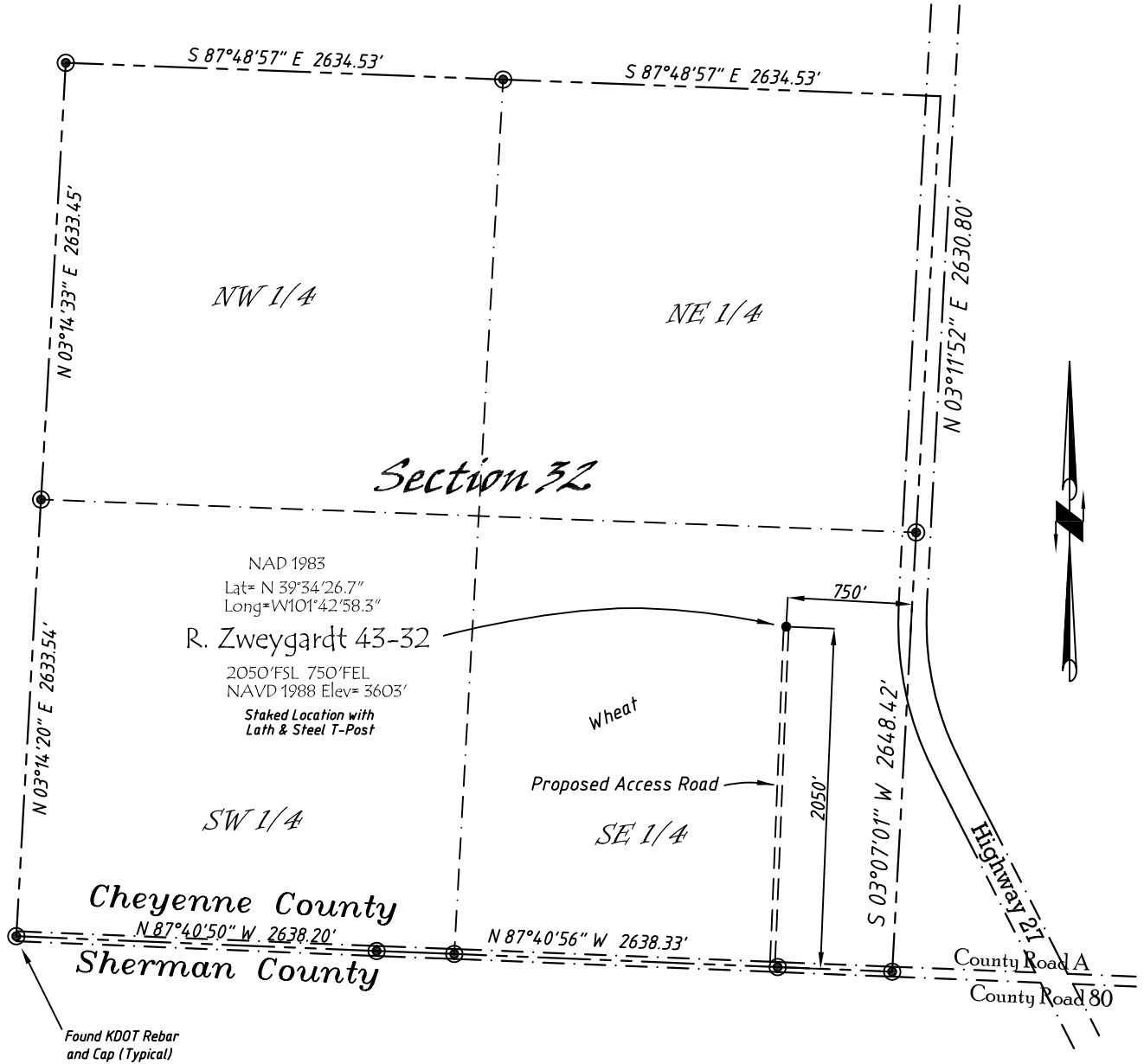


Well Location Map

R. Zwegardt 43-32

*NE 1/4, SE 1/4, Section 32, T5S, R39W, 6th P.M. Cheyenne County, Kansas
2050' FSL - 750' FEL Elev=3603'*



Copyright © 2011

Directions:

From the Intersection of Hwy 27 & Hwy 36 @ Wheeler, KS, Go S on Hwy 27
 Approximately 13 miles, to County Road A, then go W 0.3 miles, then N
 2050' to Staked location.

This Drawing is for Construction Purposes Only

Noble Energy, Inc.		
DRAWN GP	DATE 3/16/11	Section 32
FB B7+P49	EQ HijPro	T5S, R39W, 6th P.M. Cheyenne County, KS
SCALE 1"=1000'	SHEET 1 of 1	PROJECT NO. 1570.184



402 Walnut
 Kanorado, KS
 785/399/2551