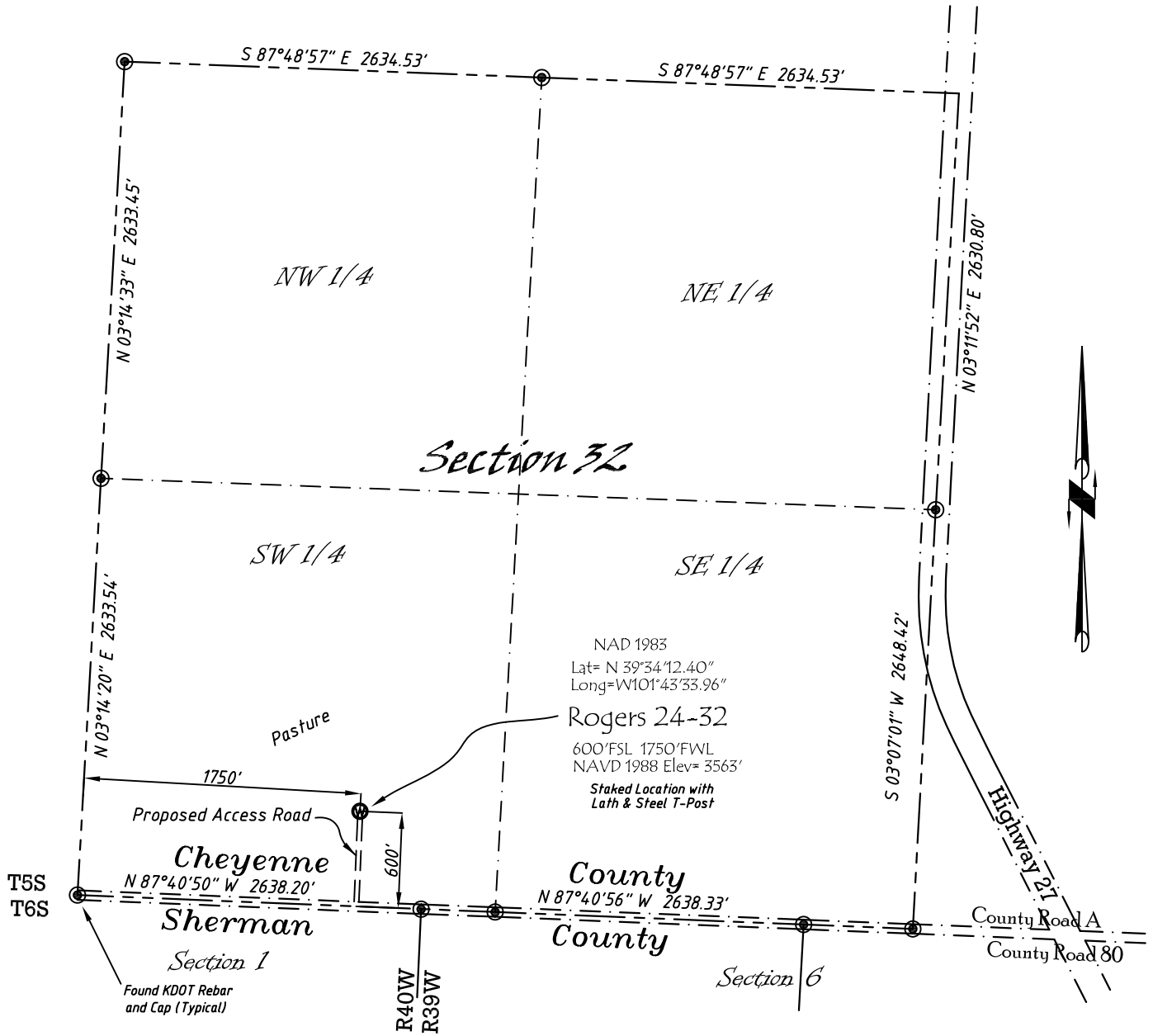


Well Location Map

Rogers 24-32

SE 1/4, SW 1/4, Section 32, T5S, R39W, 6th P.M. Cheyenne County, Kansas
 600' FSL - 1750' FWL Elev=3563'



Copyright © 2011

Directions:

From the Intersection of Hwy 27 & Hwy 36 @ Wheeler, KS, Go S on Hwy 27
 Approximately 13 miles, to County Road A, then go W 0.6 miles, then N
 600' to Staked location.

This Drawing is for Construction Purposes Only

Noble Energy, Inc.		
DRAWN GP	DATE 4/7/11	Section 32
FB B74 P64	EQ HijPro	T5S, R39W, 6th P.M. Cheyenne County, KS
SCALE 1"=1000'	SHEET 1 of 1	PROJECT NO. 1570.189



402 Walnut
 Kanorado, KS
 785/399/2551